

# Winter Street and Susquehanna Avenue

June 2025



## Part of the I-535 Blatnik Bridge Replacement

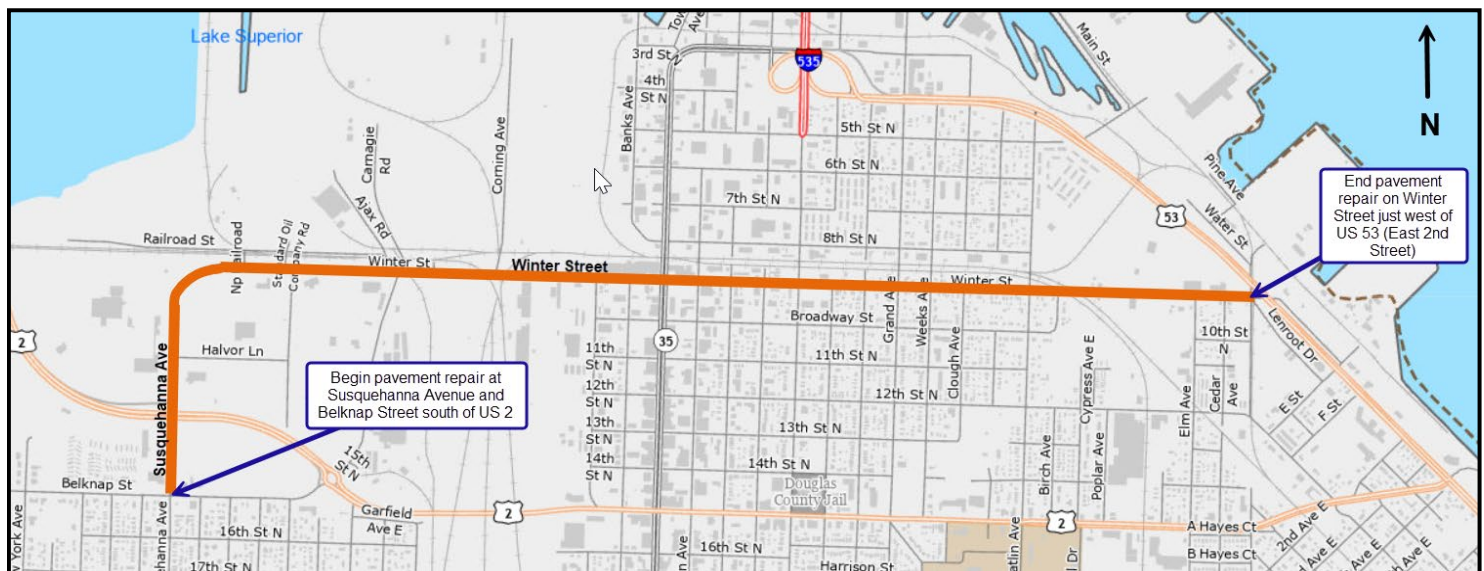


The Minnesota Department of Transportation (MnDOT), in partnership with the Wisconsin Department of Transportation (WisDOT), is planning the replacement of the Blatnik Bridge. The Blatnik Bridge, which carries I-535 traffic over the St. Louis Bay, connects Duluth, MN, and Superior, WI.

The replacement project will result in full closure of the Blatnik Bridge for most of the construction. During the full closure of the structure, traffic will be detoured via US 2 (Belknap Street) and the Bong Bridge. Winter Street, along with Susquehanna Avenue, currently functioning as a US 2 truck route through the city of Superior will be improved and signed in 2026 as an alternate route to Belknap Street to minimize traffic impacts during bridge closure.

The proposed Winter Street/Susquehanna Avenue project will include:

- ❖ Removing a portion of existing pavement on Winter Street and Susquehanna Avenue and placing a new layer of asphalt over the roadways.
- ❖ Adding a left-turn lane for northbound traffic at Susquehanna Avenue at the on-ramp to westbound US 2.
- ❖ Adding pavement markings to delineate additional turn lanes, as room allows, along the corridor.
- ❖ Adding temporary traffic signals on Winter Street at its intersections with Catlin and Grand avenues.
  - These signals will have interconnections to the railroad to eliminate the risk of a vehicle being stopped on the railroad tracks because of a red light at the signals.
  - These signals will be removed following the completion of the Blatnik project.
  - Traffic signals on Winter Street will be coordinated to prioritize east-west traffic.
- ❖ Constructing Americans With Disabilities Act-compliant sidewalk curb ramps along Winter Street where necessary.



For more information on the replacement of the Blatnik Bridge, please view the project website:

<https://www.dot.state.mn.us/d1/projects/blatnik-bridge/index.html>

# Winter Street and Susquehanna Avenue

June 2025



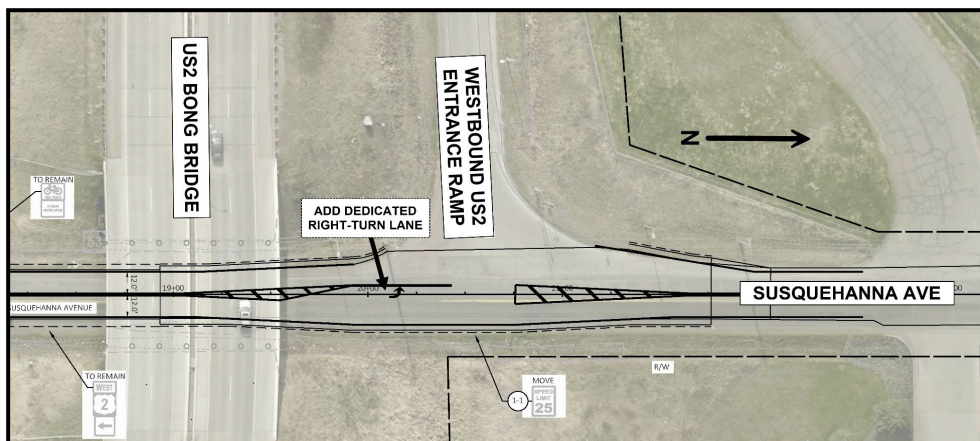
## Part of the I-535 Blatnik Bridge Replacement



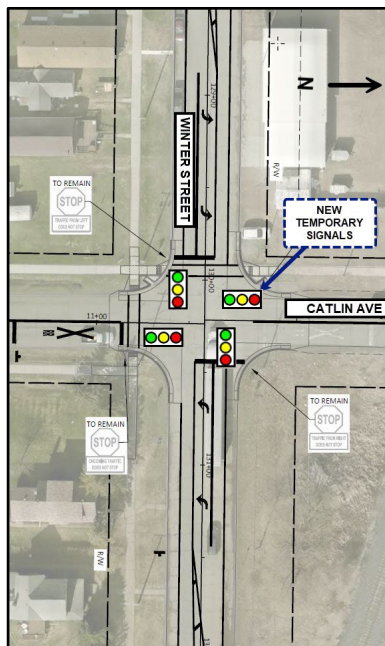
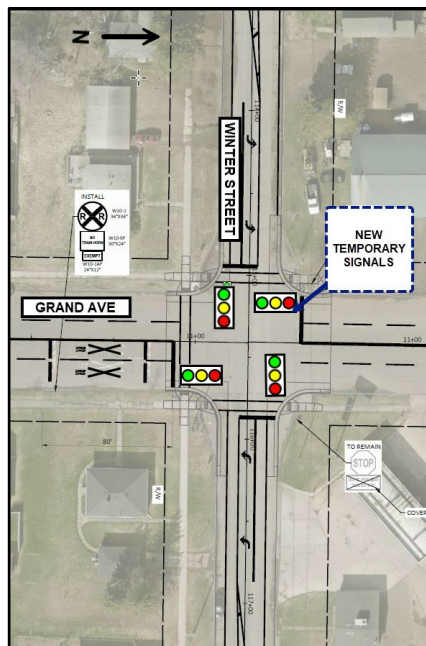
### Proposed Blatnik Bridge Schedule:

- June 2025-26: Finish preliminary design
- **Fall 2026: Work on the detour/alternate routes**
- 2026-27: Complete final design
- 2026-31: Phased construction, with complete bridge closure for approximately four to five years beginning in early 2027

### Susquehanna Avenue at the on-ramp to westbound US 2:



### Temporary traffic signals at Grand and Catlin avenues:



### Contact information:

#### Stephanie King

WisDOT Northwest Region  
Project Leader  
(715) 392-7874  
[stephanie.king@dot.wi.gov](mailto:stephanie.king@dot.wi.gov)

#### Beth Cunningham

WisDOT Northwest Region  
Project Manager  
(715) 635-4973  
[beth.cunningham@dot.wi.gov](mailto:beth.cunningham@dot.wi.gov)

#### Tyler Rongstad

WisDOT Northwest Region  
Project Supervisor  
(715) 461-0372  
[tyler.rongstad@dot.wi.gov](mailto:tyler.rongstad@dot.wi.gov)

#### Christena T. O'Brien

WisDOT Northwest Region  
Communications Manager  
(715) 833-9814,  
(715) 828-9471  
[christena.obrien@dot.wi.gov](mailto:christena.obrien@dot.wi.gov)

### Wisconsin Department of Transportation: Northwest Region - Superior office

1701 N. 4th St.  
Superior, WI 54880  
(715) 392-7925  
(800) 590-1868  
[nwr.dtsd@dot.wi.gov](mailto:nwr.dtsd@dot.wi.gov)



For more information on the improvement project on Winter Street and Susquehanna Avenue, please view the project website: <https://wisconsin.dot.gov/Pages/projects/by-region/nw/winterstreet/default.aspx>