



I-94

Chippewa River and Chippewa River Overflow Bridges Eau Claire County



Project Information

Built in 1965, the bridges carrying east- and westbound I-94 over the Chippewa River in the town of Brunswick and the Chippewa River overflow in the town of Union need rehabilitation.

WisDOT is proposing to:

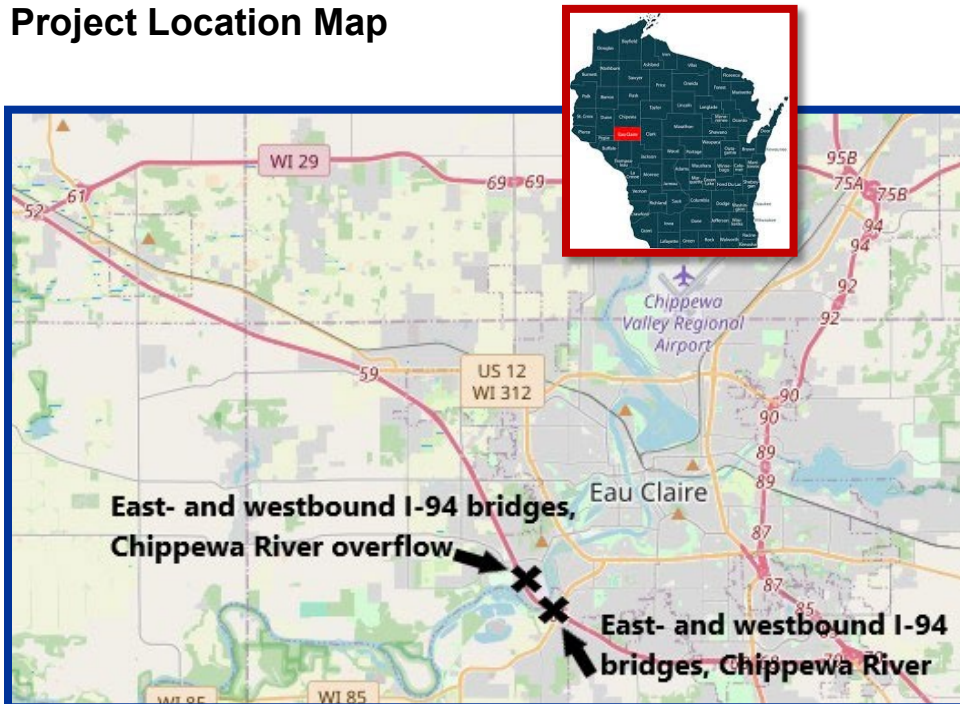
- Replace the expansion joints and abutment backwalls
- Overlay the bridge decks with concrete
- Complete spot painting of the existing steel girders
- Update guardrail at all bridge approaches

In addition, a high-friction surface treatment will be added to the westbound I-94 bridge over the Chippewa River.

Traffic Impacts

During the multiyear construction project, I-94 will remain open to traffic, but motorists will be shifted to one side of the interstate via median crossovers that will carry one lane of traffic in each direction as work is completed on the bridges on the other side.

Project Location Map



Schedule

- Public input: Spring 2025
- Preliminary design completion: October 2025
- Final plan submittal: August 2027
- Construction: Spring 2028 to summer 2029

Contacts

Adam Hetrick, PE
WisDOT Northwest Region
Project Manager
(715) 836-2065
adam.hetrick@dot.wi.gov

Chris Marcum, PE
JT Engineering Inc.
Consultant Project Manager
(715) 861-4823
chrism@jt-engineering.com

Jeff Olson
WisDOT Northwest Region
Project Supervisor
(715) 395-3032
jeffrey.olson@dot.wi.gov

Christena T. O'Brien
WisDOT Northwest Region
Communications Manager
(715) 833-9814, (715) 828-9471
christena.obrien@dot.wi.gov

Project Website

- wisconsindot.gov/Pages/projects/by-region/nw/i94chippewa/riverbridges/default.aspx