

# **Project: 8610-00-04/74**

## **NW Region**

**Nicholas Pitsch**  
**WisDOT – Project Manager**

Public Information Meeting  
Chippewa, Dunn, Eau Claire, Pierce & Trempealeau Counties

**November 2024**

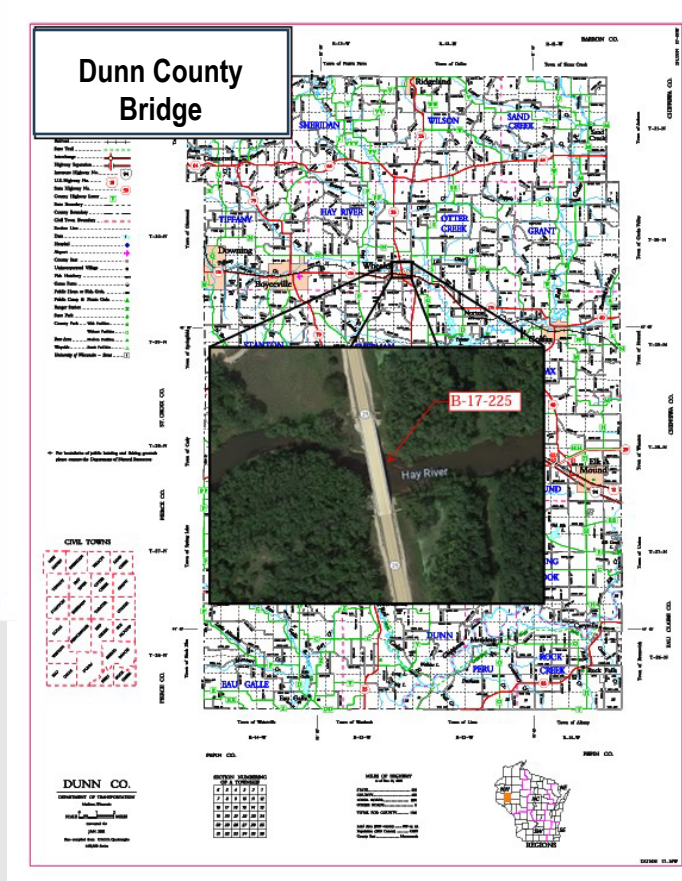
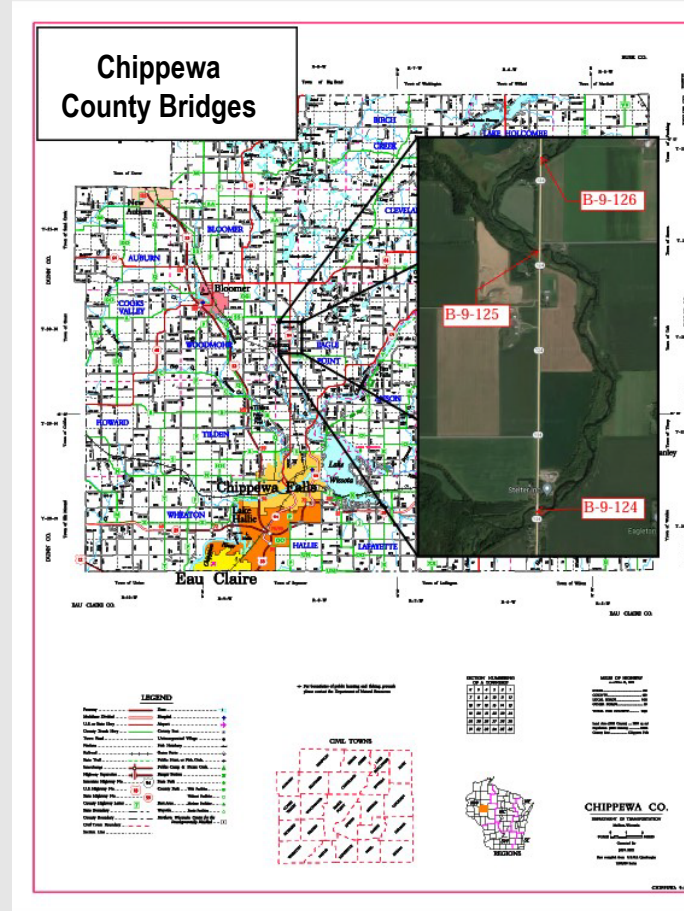
# Agenda

- Project Location
- Purpose and Need
- Proposed Improvements
- Proposed Design Overview
- Traffic Control
- Upcoming Schedule
- Project Contacts
- Public Comment



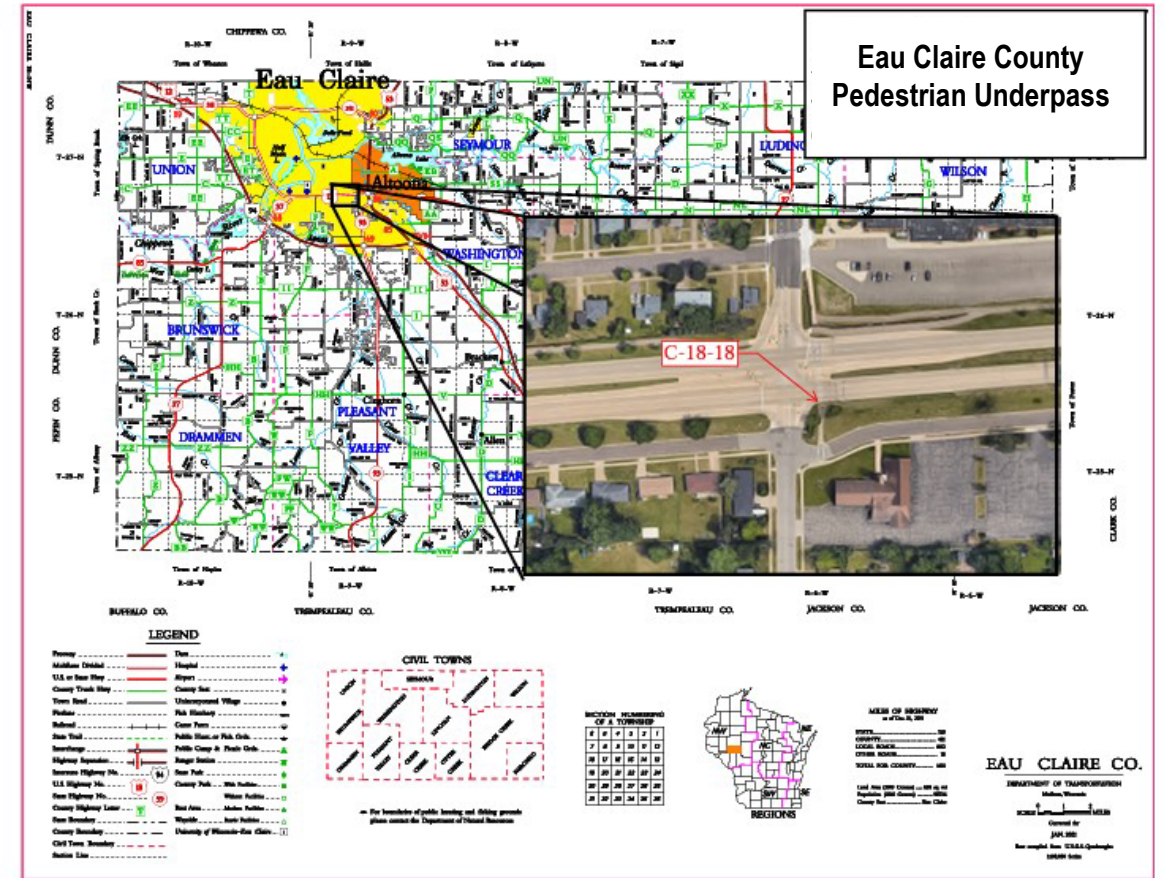
# Project Location

- Chippewa County
  - B-09-0124, B-09-0125 and B-09-0126: All carrying WIS 124 over O'Neil Creek between Eagleton and WIS 64
- Dunn County
  - B-17-0225: WIS 25 over the Hay River north of Wheeler



# Project Location

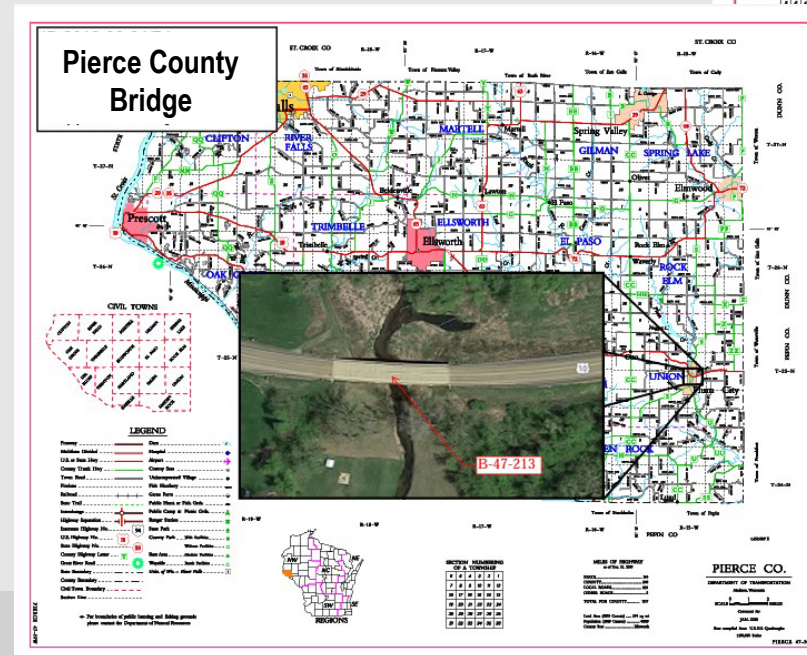
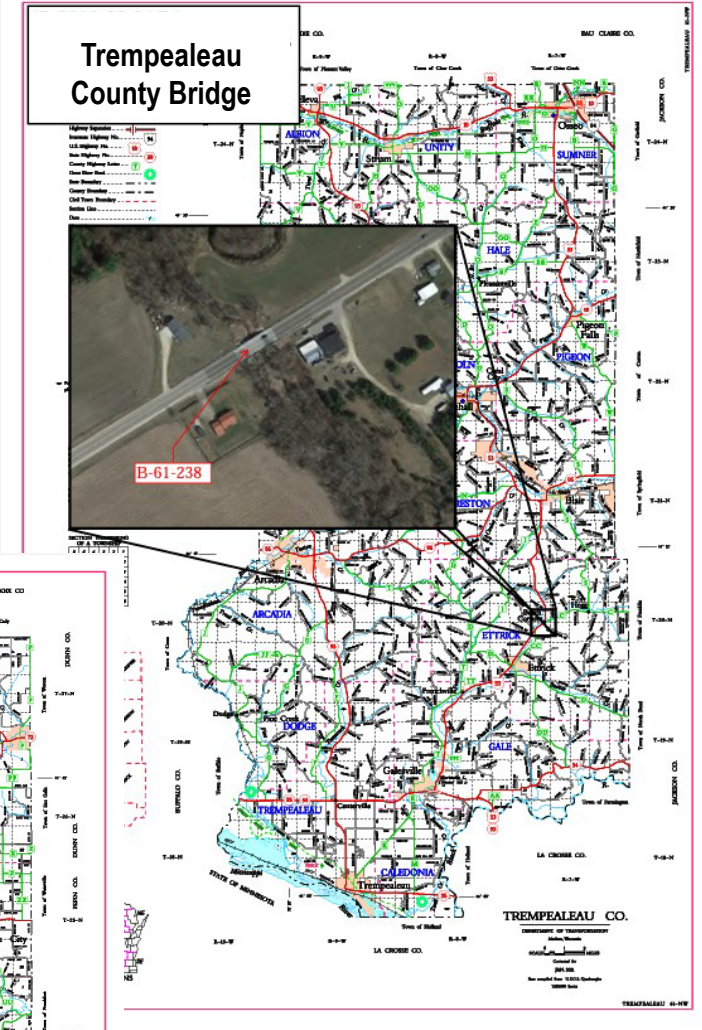
- Eau Claire County
  - C-18-0018: US 12 over the pedestrian underpass just east of Keith Street in Eau Claire





# Project Location

- Pierce County
  - B-47-0213: US 10 over Plum Creek in Plum City
- Trempealeau County
  - B-61-0238: US 53 over a branch of the north fork of Beaver Creek northeast of Ettrick



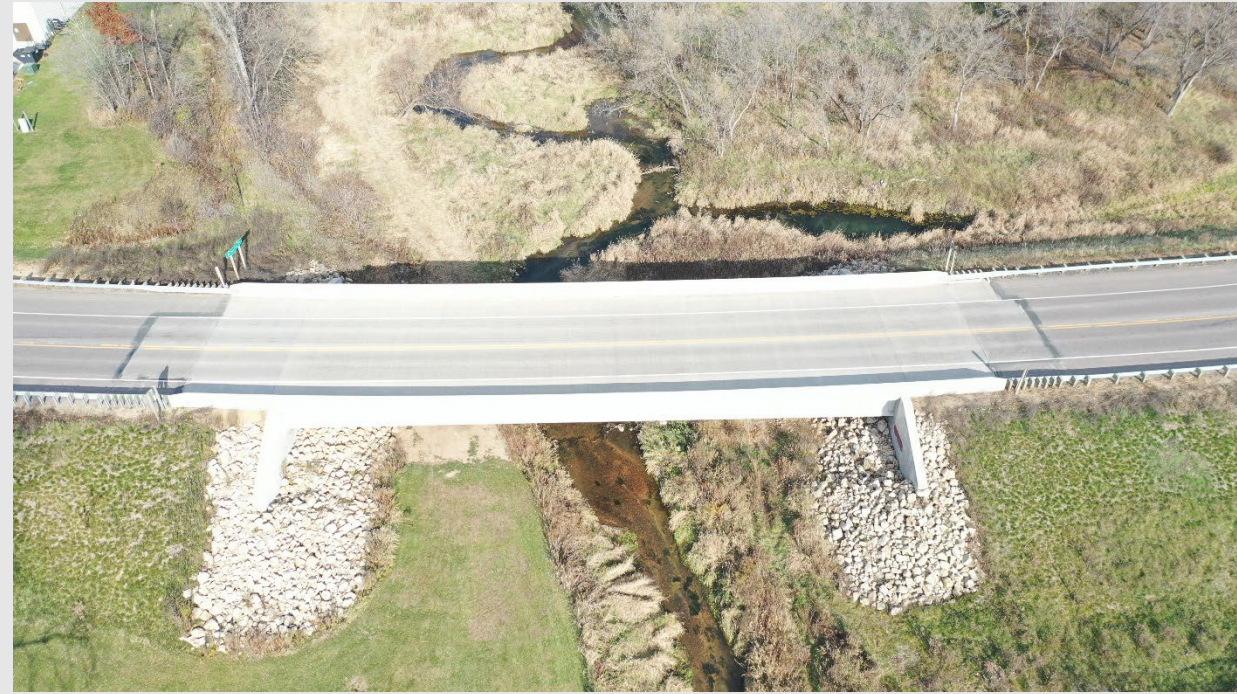
# Purpose and Need

- Purpose of the project
  - Protect and extend life of concrete bridge decks.
- Need for the project
  - Heavy traffic results in deteriorating bare bridge decks.





# Purpose and Need



# Proposed Improvements

- **On all seven structures:**
  - Make concrete repairs on existing bridge decks.
  - Clean bridge decks.
  - Add a thin polymer overlay on bridge decks.



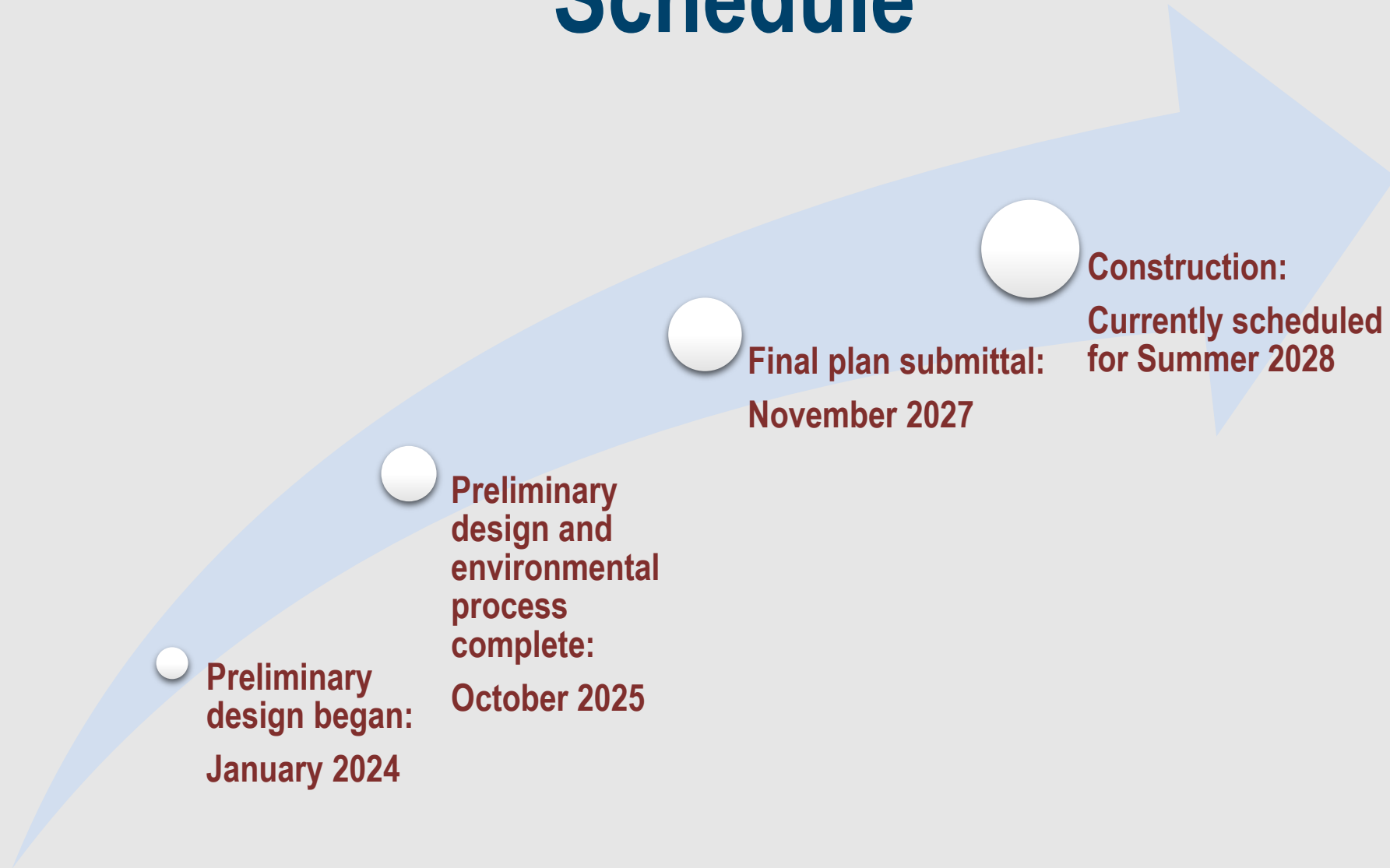


# Traffic Control

- Highways will remain open to traffic, but motorists will encounter:
  - Lane closures controlled by flagging operations during daylight hours



# Schedule



# Project Contacts

- WisDOT Project Manager Nick Pitsch, PE
  - (715) 225-1271, [nicholas.pitsch@dot.wi.gov](mailto:nicholas.pitsch@dot.wi.gov)
- Consultant Project Manager Kevin Meyer, P.E.
  - (715) 299-1894, [kmeyer@correinc.com](mailto:kmeyer@correinc.com)





# Public Comment

- WisDOT is accepting public comments on the proposed project through Dec. 31, 2024, by:
  - Email: [nicholas.pitsch@dot.wi.gov](mailto:nicholas.pitsch@dot.wi.gov)
  - Mail: Wisconsin Department of Transportation  
718 W. Clairemont Ave.  
Eau Claire, WI 54701  
Attn.: Nicholas Pitsch

