



*What would
YOU
like to see for the
FUTURE OF MASON STREET?*

PUBLIC INVOLVEMENT MEETING #2

This meeting will focus on four alternatives that have been developed based on data collection, analysis and public comments from the first public meeting in 2023.

The four alternatives range from keeping the configuration of the roadway, ramps, and elevated structures very similar to what is existing, to transformational changes that would bring large sections of the currently elevated roadway down to grade and potentially reconnect to the existing city street system.

Each alternative also incorporates options for bicycle and pedestrian facilities on the bridge that crosses the Fox River and the roadway on either side of the river.

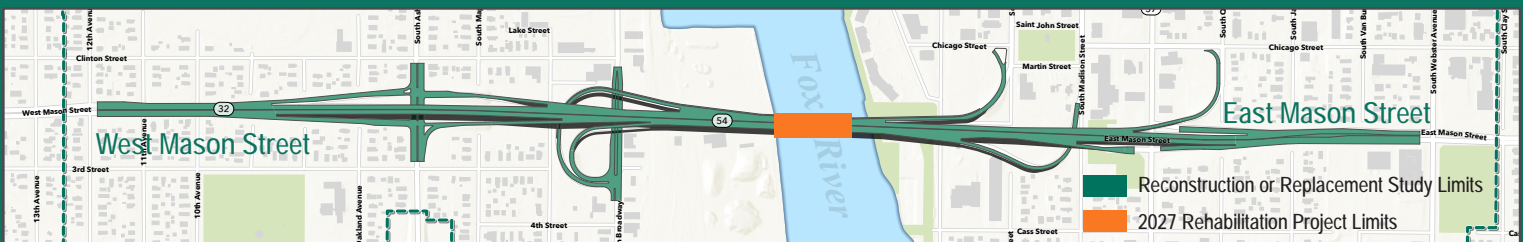
Your comments and thoughts are important for the team to understand the alternatives and how each impact your neighborhood and use of the corridor.

This is the second of four public meetings planned for the study phase. Highlights include:

- » *A short presentation of the exhibits will begin at 5:15 p.m.*
- » *Large format exhibits of drawings of the alternatives.*
- » *Open house format. Come and go at any time.*
- » *The project team will be available for one-on-one conversations.*

The next public meeting is planned for fall 2025, and will include progress made in screening alternatives based on engineering analysis and community feedback.

SEPTEMBER 25, 2024 • 5 PM-7 PM • NEVILLE PUBLIC MUSEUM



The Reconstruction or Replacement Study Area is from 12th Avenue to Webster Avenue, and includes all ramps, elevated roadway, at grade roadway, and the bridge across the Fox River.

The Rehabilitation Project limits are restricted to the operable (basculer) bridge and its approach structures at the Fox River. The purpose of this project is to preserve the long-term operation of the bridge and to address structural deterioration in advance of the larger study project being constructed.

MASON STREET BRIDGE STUDY • FALL 2024

CURRENT STUDY PHASE: THE PLANNING AND ENVIRONMENTAL LINKAGES STUDY

WHAT IS A PEL STUDY?

A PEL study refers to a Planning and Environmental Linkages (PEL) study. A PEL is a process used in transportation planning to consider environmental, community, and economic goals early in the planning process. The goal of a PEL study is to streamline project development by integrating these considerations and engaging stakeholders before formal project initiation.

Overall, PEL studies are designed to make transportation planning more:

- **Efficient**
- Cost-effective
- Environmentally responsible

KEY FEATURES OF A PEL STUDY

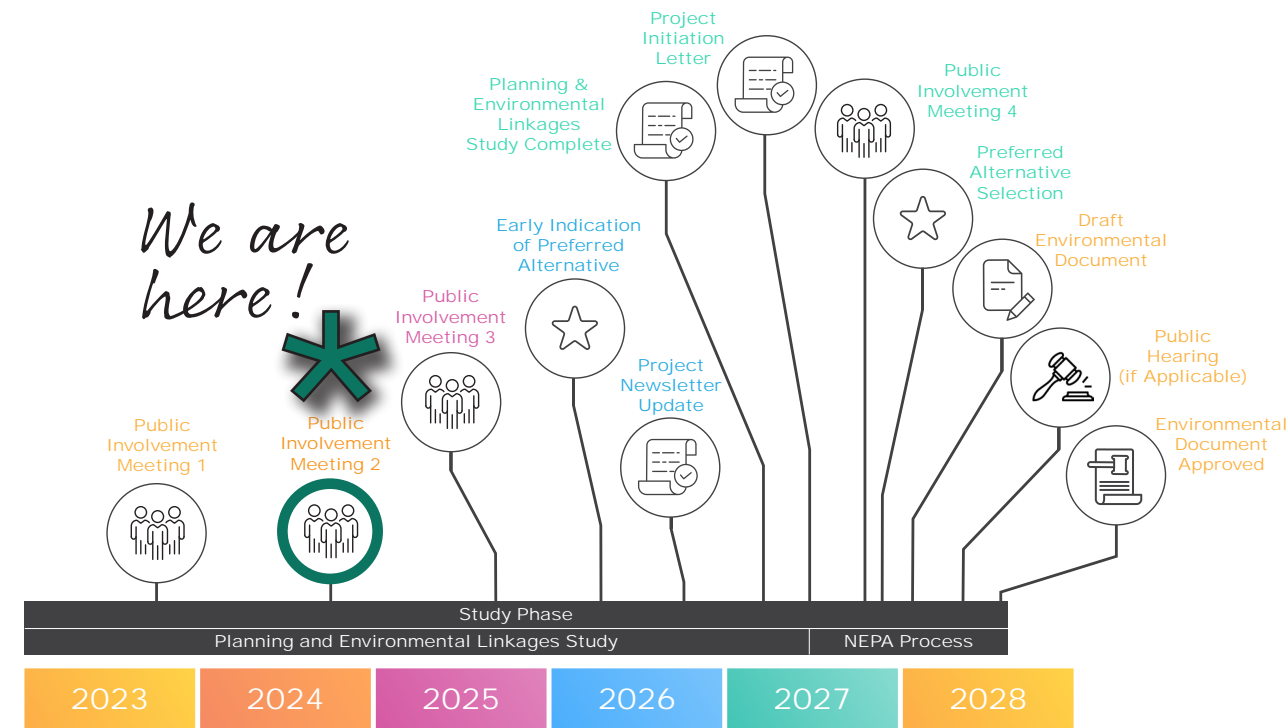
- 1. Early Coordination:** Involves collaboration among various stakeholders, including local governments, agencies, and the public, to identify potential issues and gather input early on.
- 2. Environmental Considerations:** It assesses environmental impacts and potential mitigation strategies at the planning stage, which can lead to more informed decisions and smoother project delivery.
- 3. Efficient Project Development:** By addressing potential challenges upfront, a PEL study can help avoid delays and reduce the need for rework during later stages of project development.
- 4. Flexible Approach:** The PEL process is adaptable to different types of projects and scales, from corridor studies to specific infrastructure improvements.

WHAT HAPPENS AFTER THIS?

The results of this PEL study lays the groundwork for the next study phase which is the National Environmental Policy Act (NEPA) process outlined in the schedule below.

Proposed schedule:

- PEL Study
 - Public Involvement Meeting #3, fall 2025
 - Early Indication of Preferred Alternative, spring 2026
 - PEL Study Complete, spring 2027
- NEPA Process, spring 2027-summer 2028
 - Public Involvement Meeting #4, fall 2027
- Preliminary Design, summer 2028-fall 2029
 - Completion of NEPA Document, December 2028
- Real Estate, Utilities and Final Design, fall 2029-end of 2031
- Construction, 2031-2032



WHAT IS THE STATUS OF THE REHABILITATION PROJECT?

The rehabilitation project is focused on the operable (bascule) bridge and its approach structures at the Fox River.

The project is slated for construction from December 31, 2026 to approximately March 31, 2027. During that time the bridge will be closed to pedestrian and vehicular traffic, and remain in the closed position.

At the public meeting, the team will share traffic and pedestrian impacts of that project.

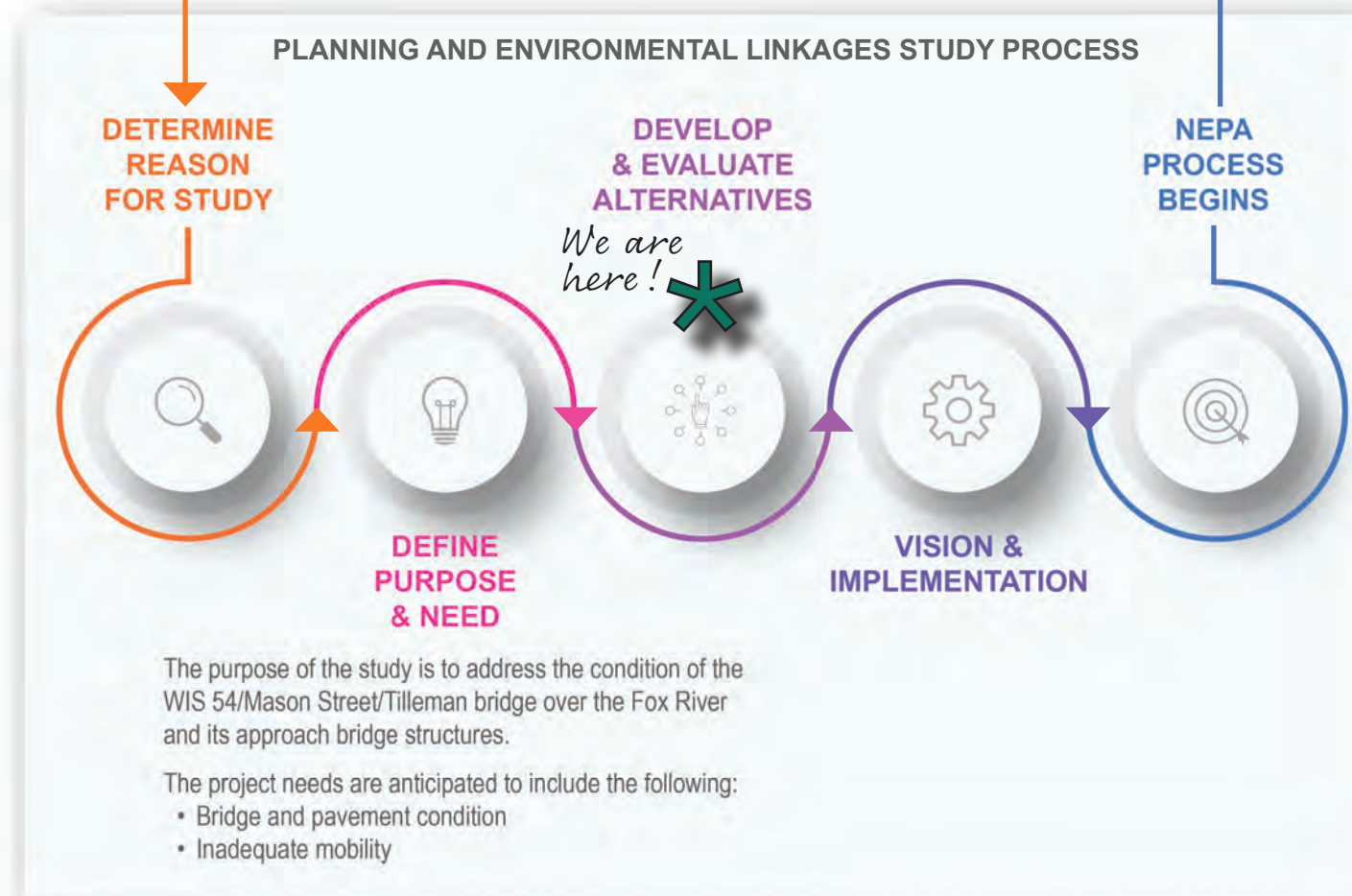
Q: Why is this public meeting important?

A: The team is currently working towards the early indication of the preferred alternative. Your comments are important to this work.

Public comment now directly impacts the screening of alternatives based on engineering analysis. The team needs your feedback to ensure that the vision is in alignment with the needs of the community. Your comments help!

The alternatives range from retaining the existing configuration, to transformational changes that alter the height of the bridge and the removal of some of the structures and ramps.

Come to the meeting and weigh in on what could be transformational changes to Mason Street downtown!





WisDOT
ATTN: Bryan Lipke
Northeast Region Office
944 Van Der Perren Way
Green Bay, WI 54304

RECIPIENT
ADDRESS



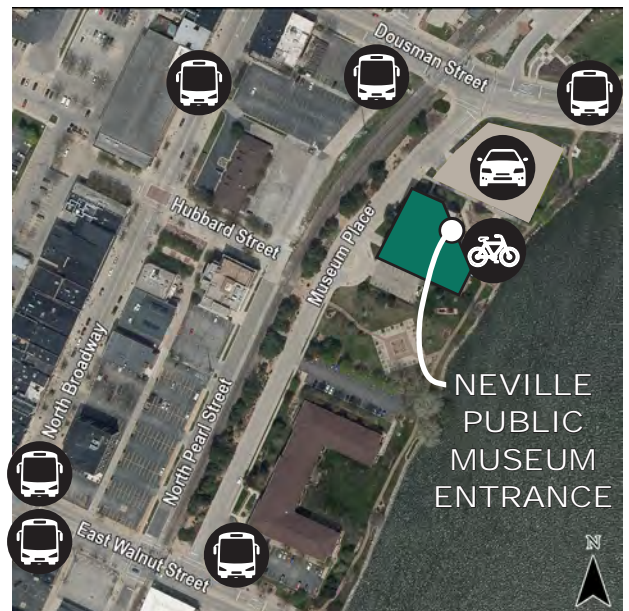
**YOU'RE
INVITED!**

WisDOT is holding a Public Involvement Meeting to discuss the Mason Street Bridge Study.

Come share your thoughts on alternatives that range from retaining the existing configuration, to transformational changes that alter the height of the bridge and remove some of the structures and ramps.

When: Wednesday, September 25, 2024
5 p.m.–7 p.m.
Presentation at 5:15 p.m.

Where: Neville Public Museum
210 Museum Pl, Green Bay, WI 54303



Representatives from the study team are willing to meet with stakeholders to discuss individual concerns and questions anywhere and anytime. Please contact Bryan Lipke to schedule a meeting with our team.

Bryan Lipke, PE, Project Manager, WisDOT Northeast Region | (920) 492-5703 | bryan.lipke@dot.wi.gov