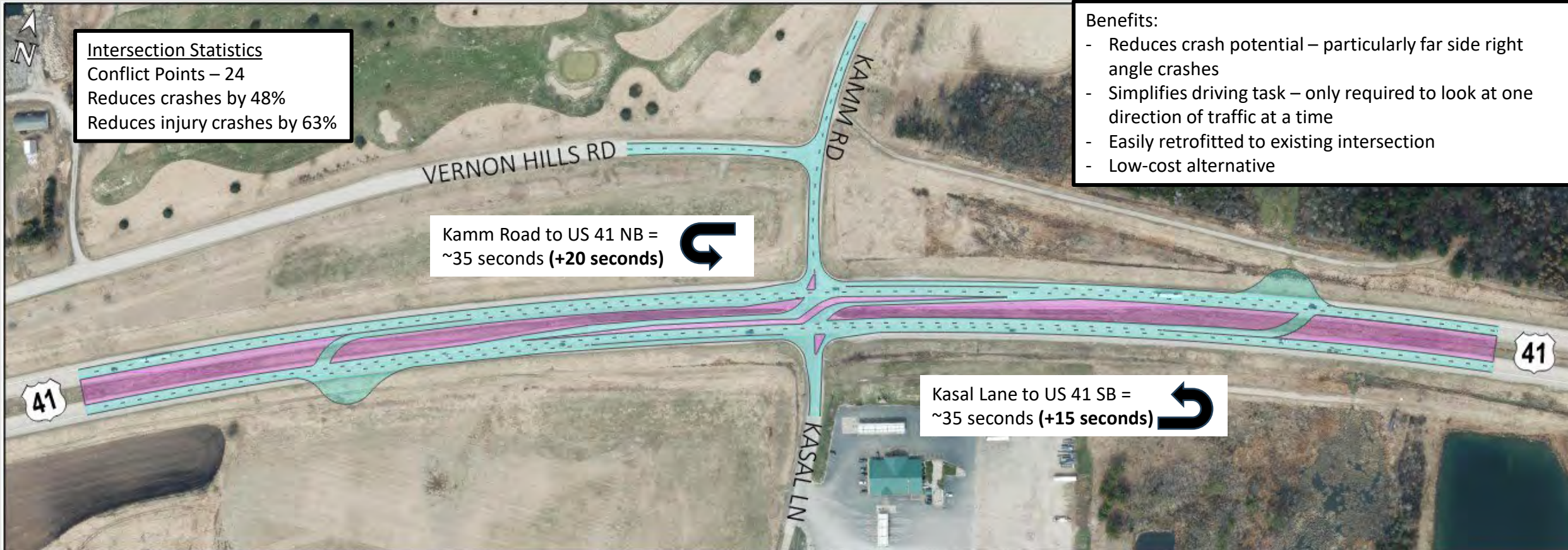


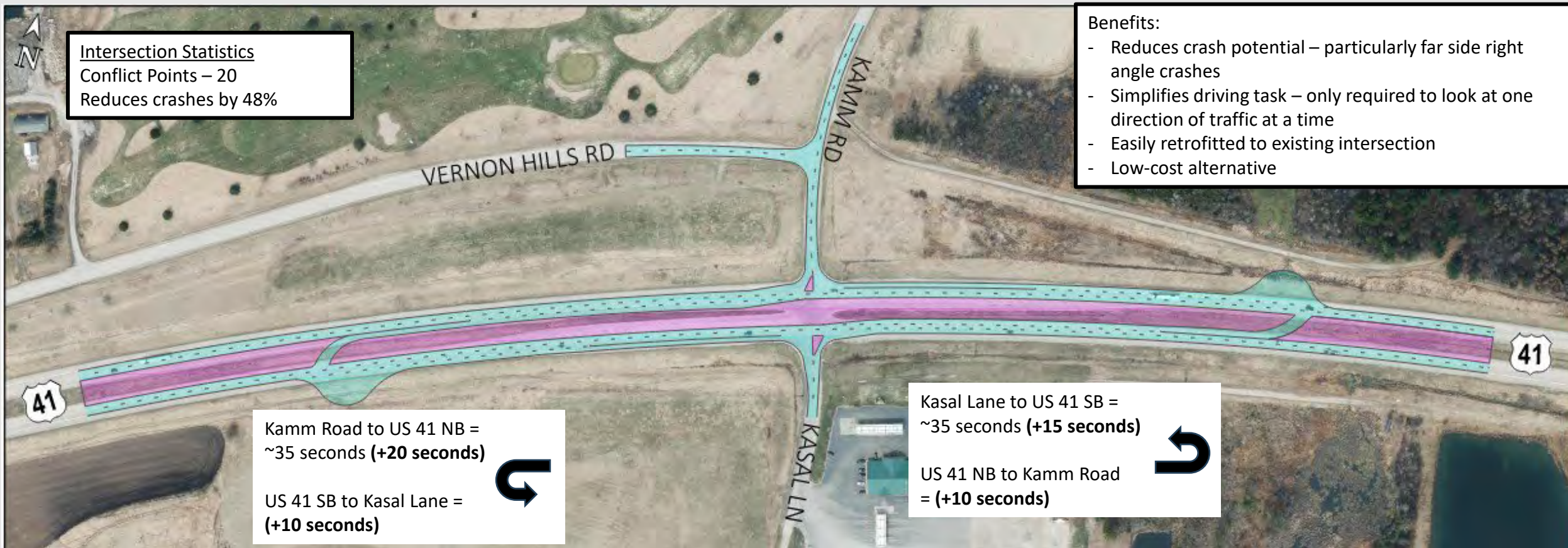
Proposed Alternative

Restricted Crossing U-Turn (Direct Access from US 41)



Proposed Alternative

Restricted Crossing with U-Turns (No Direct Access from US 41)



Proposed Alternative

T-Intersection (No Direct Access to/from Kamm Road)



Intersection Statistics

Conflict Points – 12

Anticipated Reduction in crashes - 12%

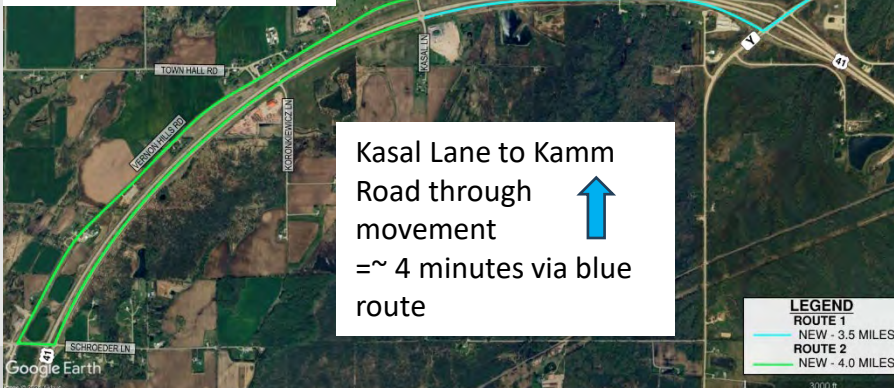
Benefits:

- Safety – Eliminates crashes associated with Kamm Road
- Maintains direct access to and from Kasal Lane

Kamm Road to Kasal Lane through movement
= ~3 minutes via green route



Kasal Lane to Kamm Road through movement
= ~4 minutes via blue route



Proposed Alternative

Restricted Crossing (Full Median Closure)

Intersection Statistics

Conflict Points – 8

Reduces overall crashes by 40%

Increase in Property Damage Crashes by 20%

Benefits:

- Maintains right-in/right-out access to side roads
- Low-cost alternative

