



WIS 32

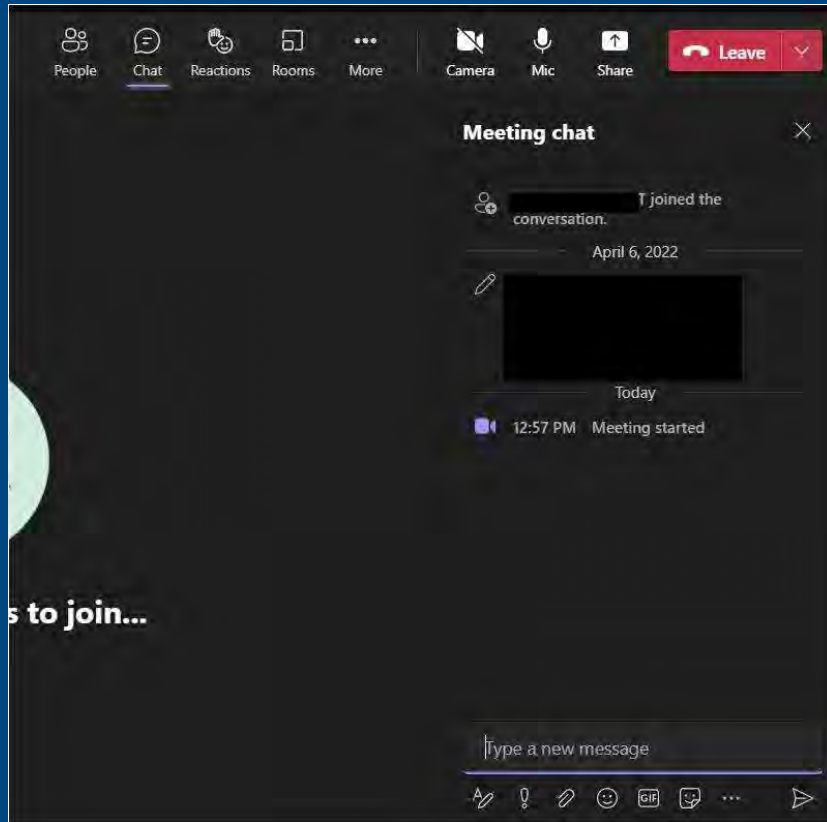
Public Involvement Meeting

Joshua Lang, P.E.
Wisconsin DOT Project Manager

Live Online Meeting

January 28, 2025

Thank You for Attending



This meeting
is being
recorded



Please **mute**
phones and
microphones



Use **chat**
to submit
questions



Afterward,
raise hand
to speak

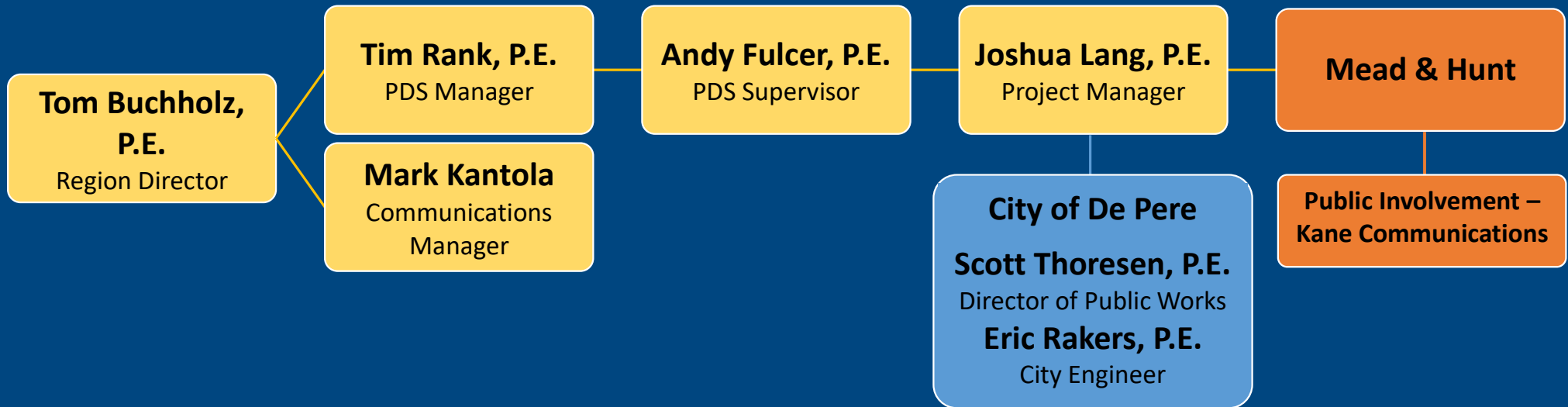


Presentation Outline

- ➊ Project Team
- ➋ Project Status/Timeline
- ➌ Project Overview
- ➍ Project Updates
- ➎ Next Steps
- ➏ How to stay informed?
- ➐ Business Coordination



Project Team



WisDOT – Northeast Region

City of De Pere

Design Engineering Consultant



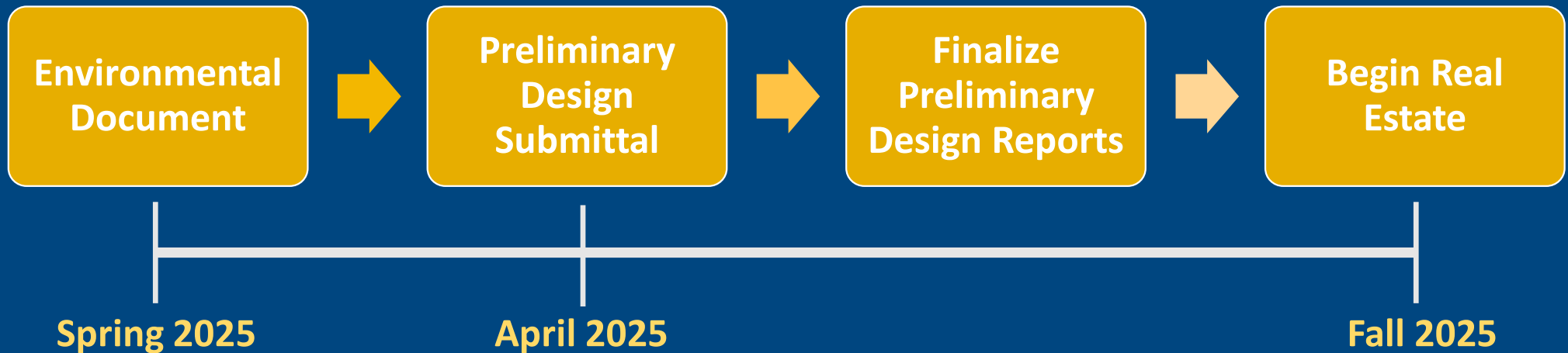
Overall Project Timeline

WE ARE HERE



Project Status

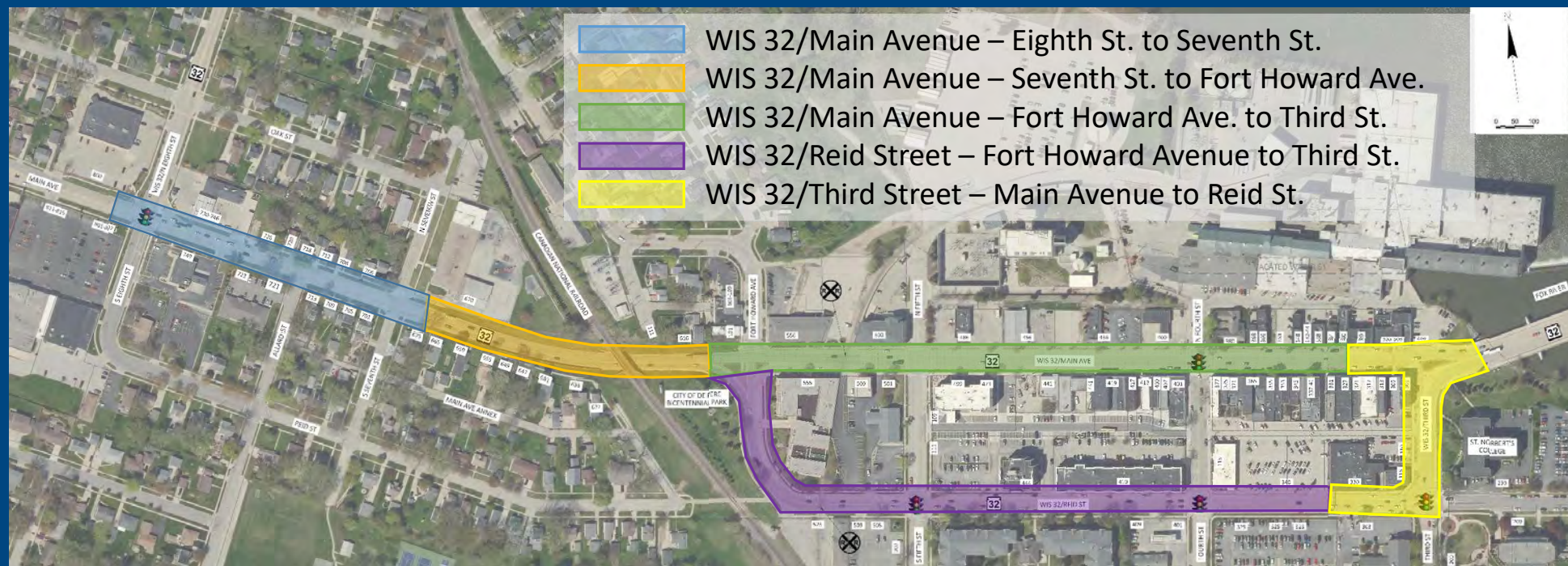
WE ARE HERE



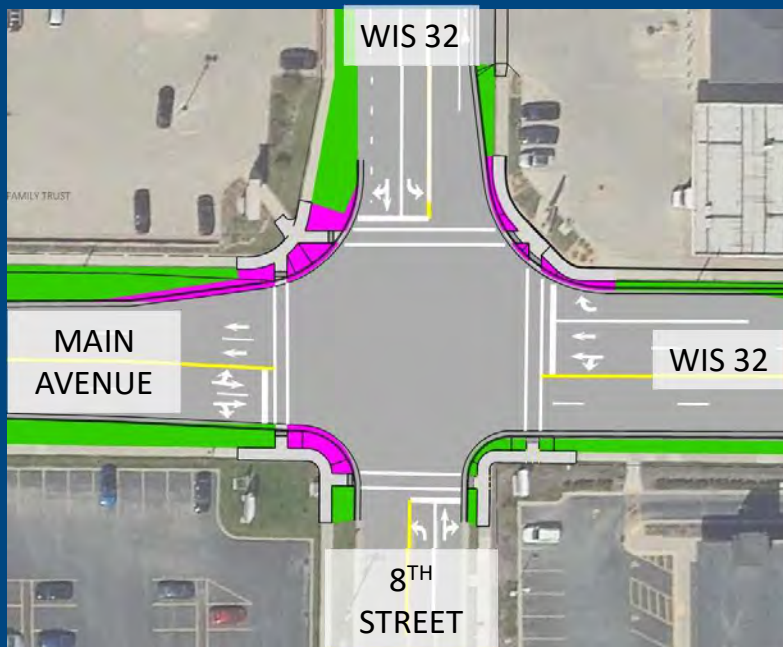
What is the General Project Area?



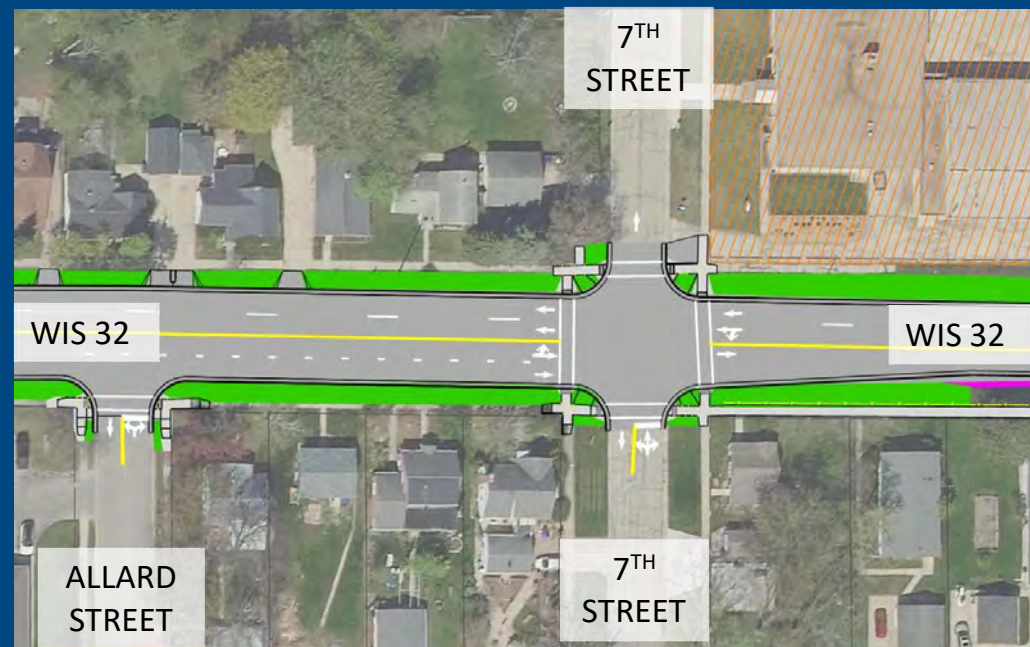
Project Improvements



Geometric Updates



Eighth Street and Main Avenue



Eastbound Main Avenue Lane Drop



Geometric Updates



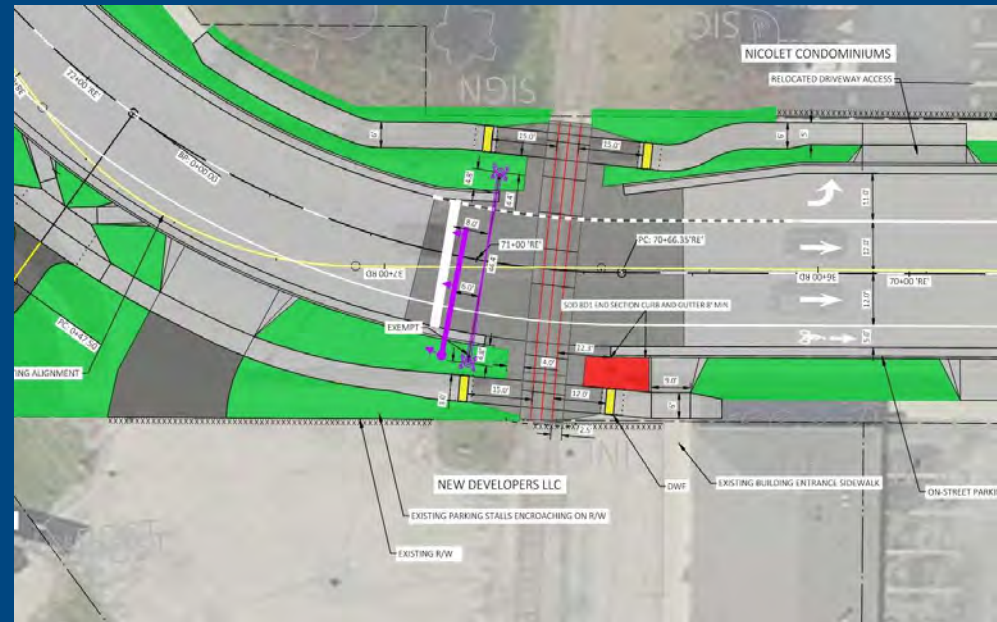
Main Avenue at Third Street



Railroad Crossing Updates



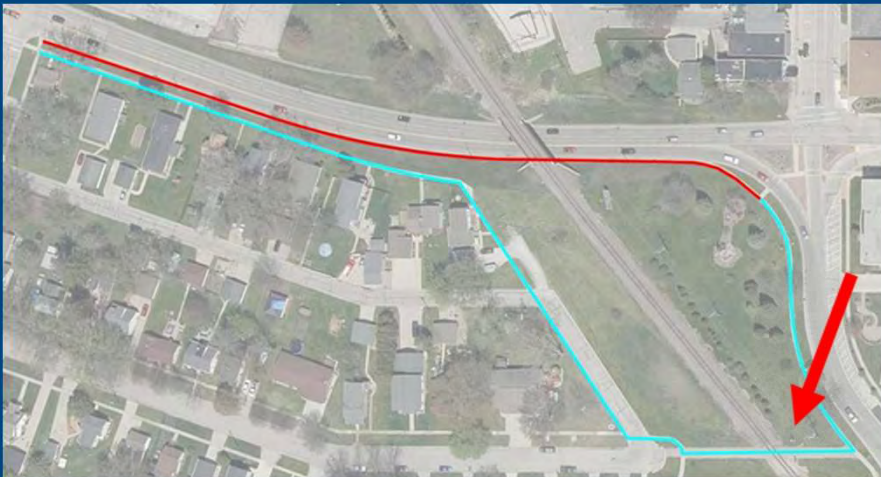
Main Avenue



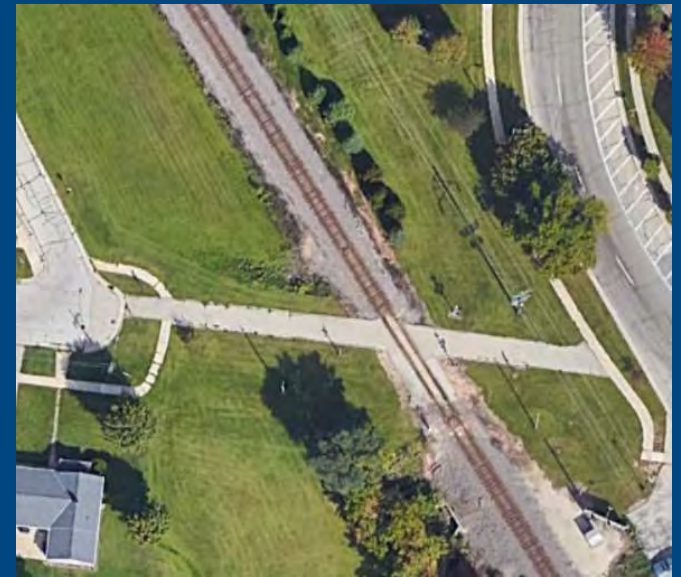
Reid Street



Railroad Crossing Updates



- Investigating alternatives
- Coordinating with railroad & other agencies



Pedestrian Crossing

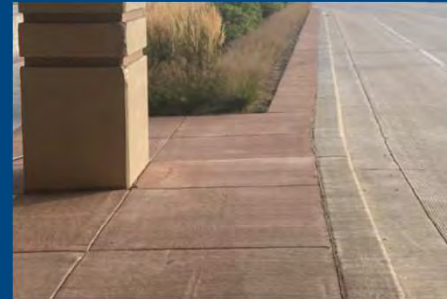


Bicentennial Park



Community Sensitive Design (CSD)

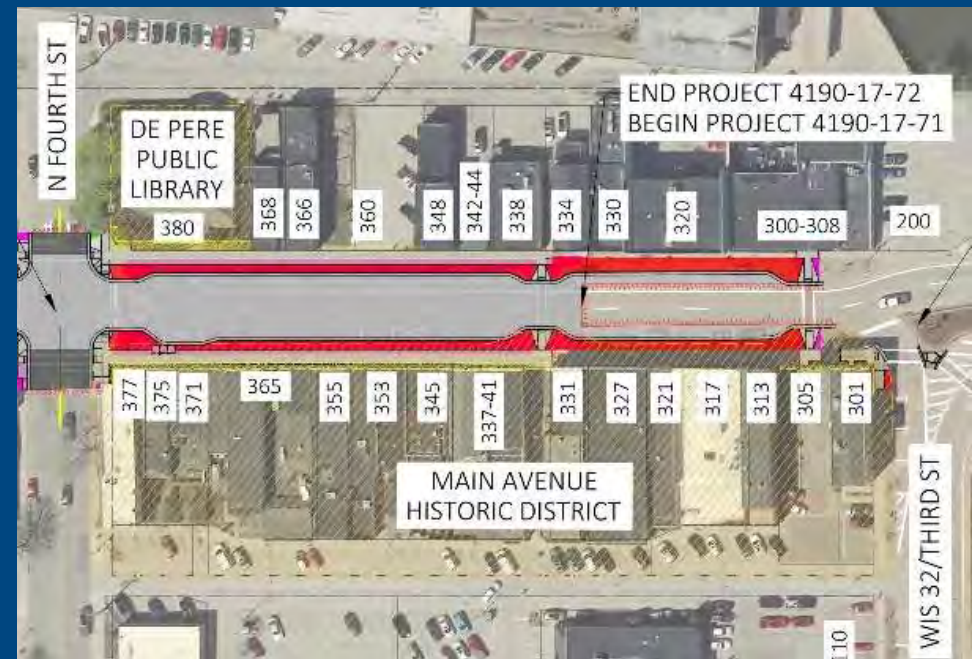
- Locally driven funding solutions to build local character into state-let projects
- Requests start at local level, and are limited to approved materials and right-of-way
- Safety remains highest priority



Environmental and Historical Considerations

Historic Districts

- Aesthetic features in historic districts must match district historical character
- Can not have an adverse effect on district
- Aesthetic features to maintain historic elements need to be included with project funding (WisDOT – Fed/State) and cannot be funded by federal or local CSD funding



Construction Staging

- Committed to:
 - Promote safety for public and workers
 - Minimize congestion and traffic impacts
 - Improve public satisfaction
- Access
 - Businesses & Driveways
 - Locals
 - Pedestrians
- Closure vs. Staged
- De Pere Utilities (Sanitary and Water main)
- Detour Route



Real Estate



- Avoid and Minimize
- Types
 - Temporary Limited Easement (TLE)
 - Permanent Acquisition (Fee)
- Locations
 - Curb Ramps
 - Grading Operations


Real Estate Acquisition Process

- City of De Pere will be acquiring the necessary real estate for the project.
- Next PIM (late 2025) will introduce the real estate team and summarize the process
- Real Estate acquisition (Winter 2025 – Spring 2027)



How to stay informed?

Wisconsin Gov. ▾

 State of Wisconsin
Department of Transportation

DMV Online Services ▾ DMV Info ▾ Doing Business ▾ Travel ▾ Safety ▾ Projects and Studies ▾ About WisDOT ▾

WIS 32 Improvements - city of De Pere

Northeast Region projects and studies
WIS 32 design alternatives

The Wisconsin Department of Transportation (WisDOT) Northeast Region is investigating and developing alternatives for proposed improvements on 0.7 miles of WIS 32 in the city of De Pere, Brown County.

Project location

WIS 32 west of the Fox River in the city of De Pere between Eighth Street and the Claude Allouez Bridge

- View project location map and roll plot with legend (7MB pdf)

Project public handout


WisDOT created a WIS 32 Project handout. Please feel free to download, print, and share. A PowerPoint presentation shared at the October Public Involvement Meeting (PIM) is also available below for download as a PDF.

- Download WIS 32 Project handout (October 2023)
- Download WIS 32 PIM PowerPoint presentation (October 2023)

Project FAQ

A Frequently Asked Question sheet is available for download. Please feel free to print and share.

- WIS 32 FAQ sheet (pdf)



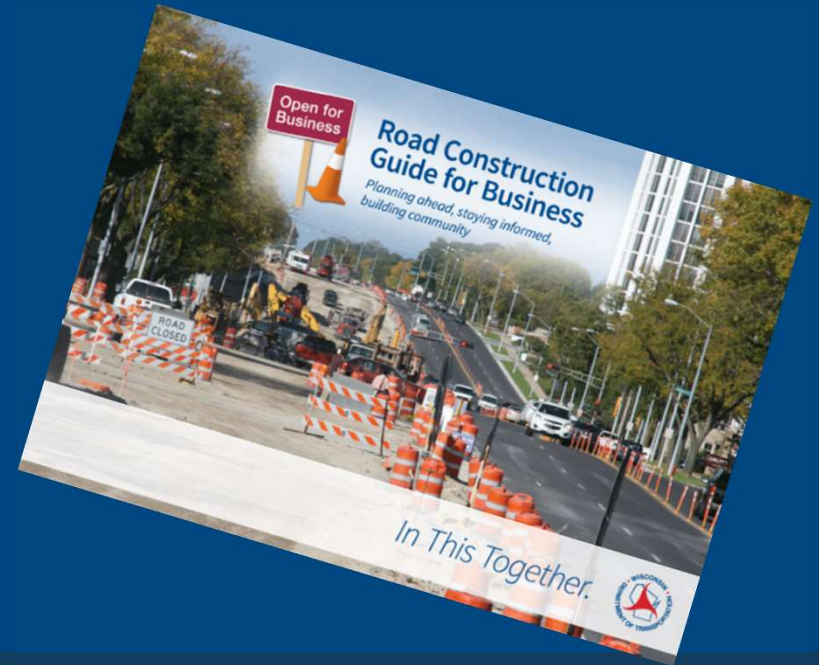
<https://wisconsindot.gov/Pages/projects/by-region/ne/32depere/default.aspx>



Business Coordination

We're In This Together!

- Visit wisconsindot.gov/together
 - Tips, tools and resources
 - New business coordination guide
- Project team is here to help
 - What information would help you...
 - Inform customers about the project?
 - Coordinate with suppliers?
 - Communicate with employees?



Next Steps

WE ARE HERE



**Environmental
Document**



**Preliminary
Design
Submittal**



**Finalize
Preliminary
Design Reports**



**Begin
Real Estate**

Spring 2025

April 2025

Fall 2025



Project Contacts

Joshua Lang, P.E.

WisDOT Project Manager

joshua.lang@dot.wi.gov

(920) 492-4141

Mark Kantola

WisDOT - Northeast Region

Communications Manager

mark.kantola@dot.wi.gov

(920) 492-4153



Thank You

