



Public Involvement Meeting

WIS 49

South Street to South
Washington Street

WIS 91

WIS 49 South to
Berlin City Limits

City of Berlin, Green Lake County

June 19, 2025

Introductions

- WisDOT

- Preston Bohn, WisDOT Project Manager
- Michael Jelinek, WisDOT Project Leader
- Kevin Kujawa, WisDOT Supervisor

- Design Team

- Brad Halvensleben, KL Engineering, Inc.
- Brian St. Vincent, KL Engineering, Inc.
- Nathan Rullman, KL Engineering, Inc.



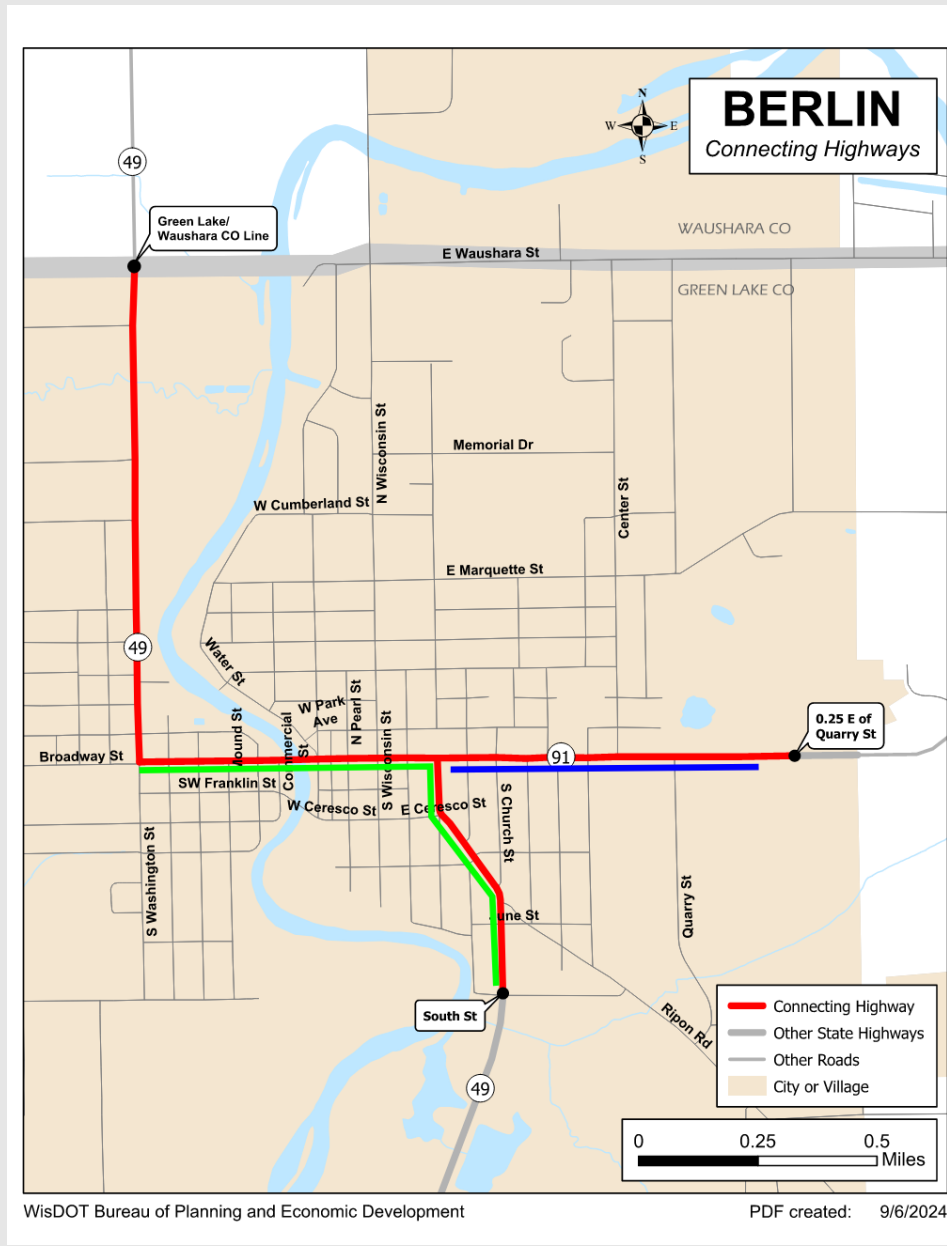
Agenda

- Project Location
- Purpose and Need
- Proposed Improvements
- Traffic Control / Traffic Impacts
- Real Estate Needs
- Schedule
- Public Involvement



Project Location

- WIS 49 and WIS 91 are connecting highways
 - Carries state highway traffic on local streets
 - Connecting highway aids from WisDOT help the City maintain WIS 49 and WIS 91 to state highway standards
 - City of Berlin
 - Maintains the roadway and drainage systems
 - Controls access and parking
 - Owns the right of way



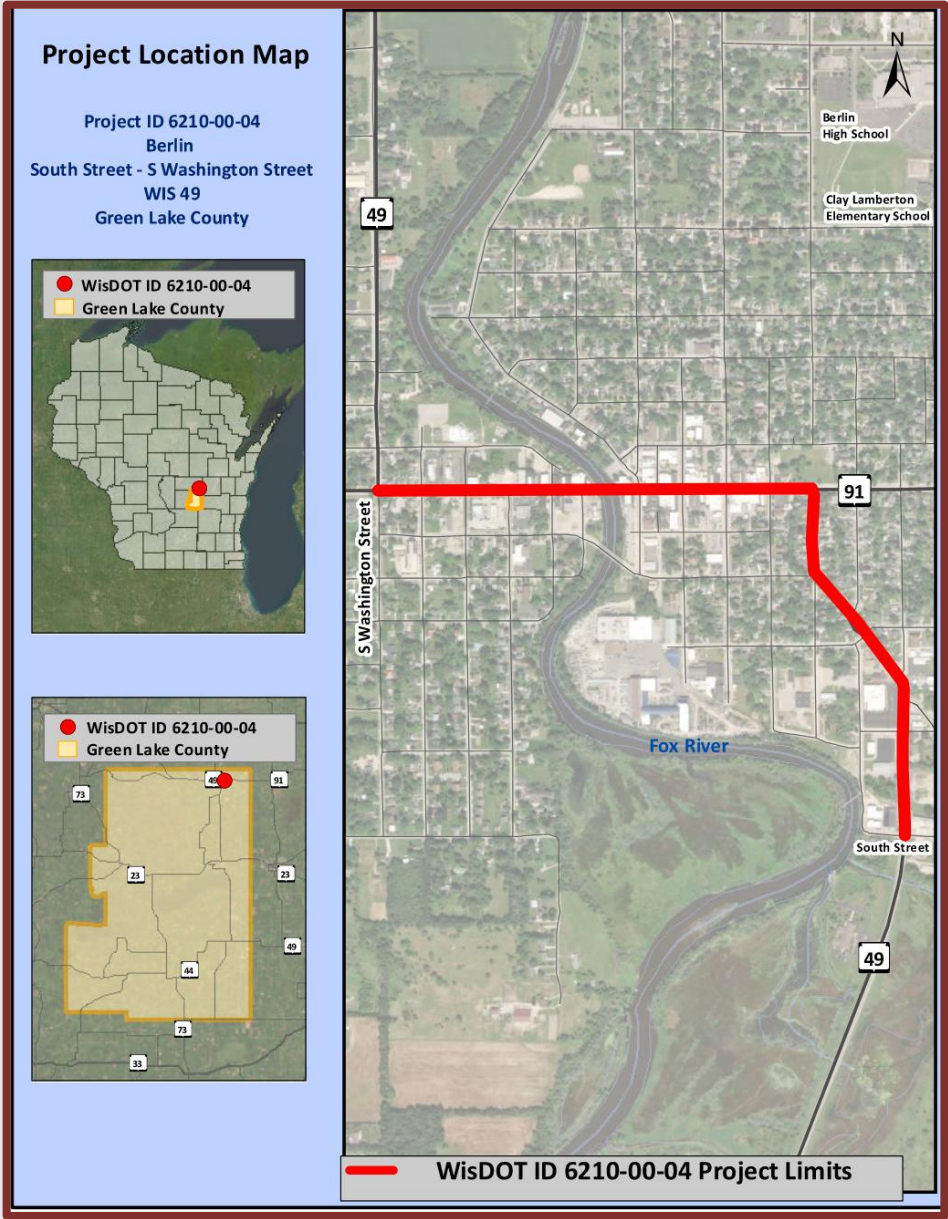
Purpose and Need

- Purpose & Need
 - Address pavement deficiencies along WIS 49 and WIS 91 through Berlin
 - The pavement has met the end of its service life
 - Curb ramps do not meet ADA standards along WIS 49 and WIS 91



Project Location

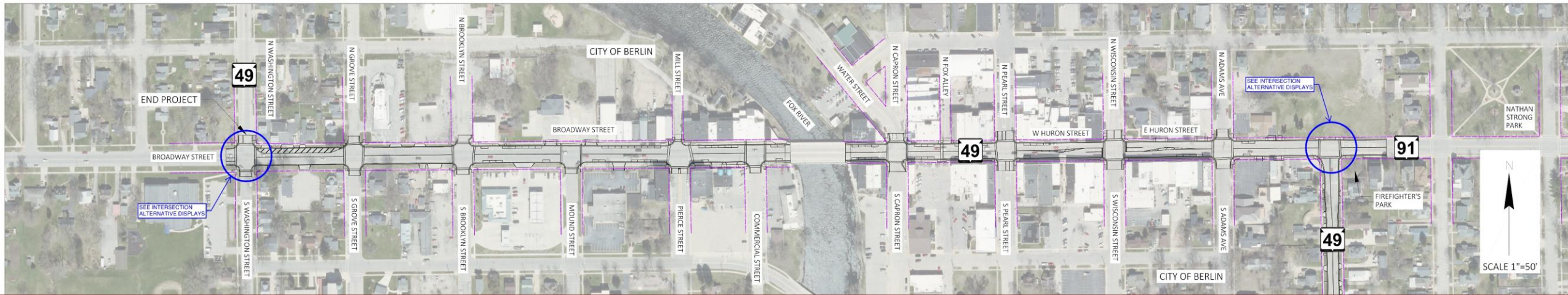
- Project limits
 - Spring Street/Ripon Road
 - Huron Street/Broadway Street
 - Begin: South Street
 - End: South Washington Street
 - Length: 1.2 miles



Proposed Improvements



Proposed Improvements

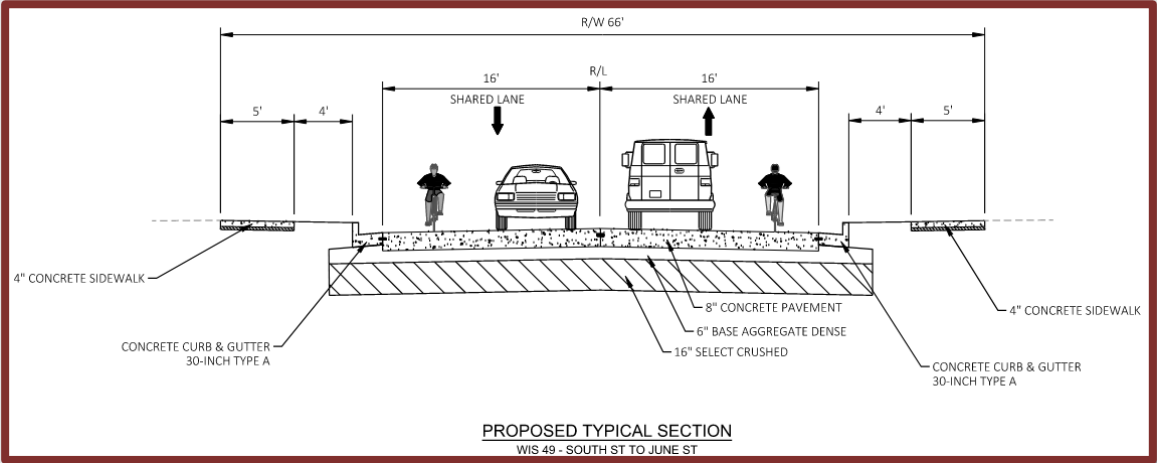
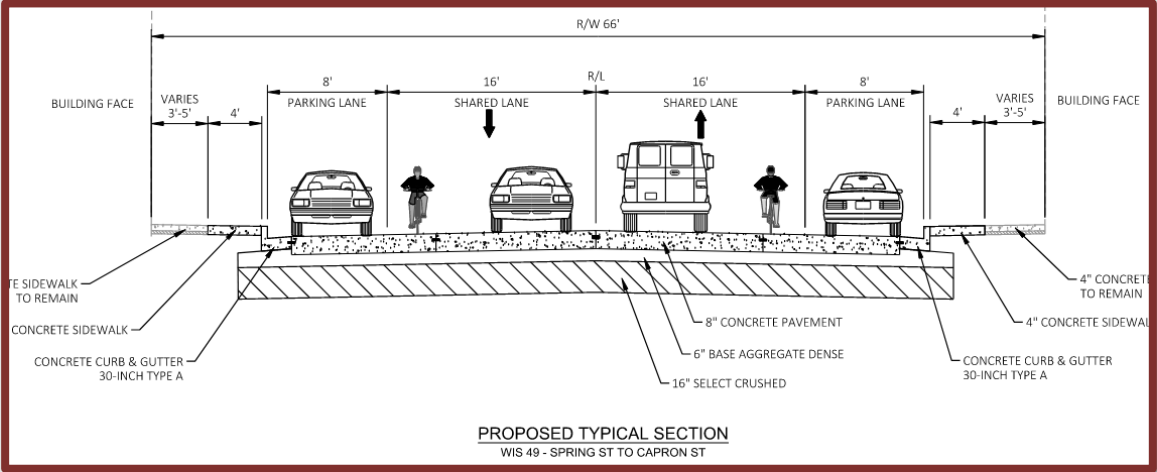


Proposed Improvements

- Roadway

- Full depth pavement replacement with new concrete pavement
 - 8 inches concrete pavement
 - 6-inches base aggregate (drains and supports the concrete pavement)
 - 16-inches subbase and fabric (added support due to poor soils)
 - Underdrain (drains the subbase layer)
- Replace curb and gutter
- Maintain existing sidewalk where possible

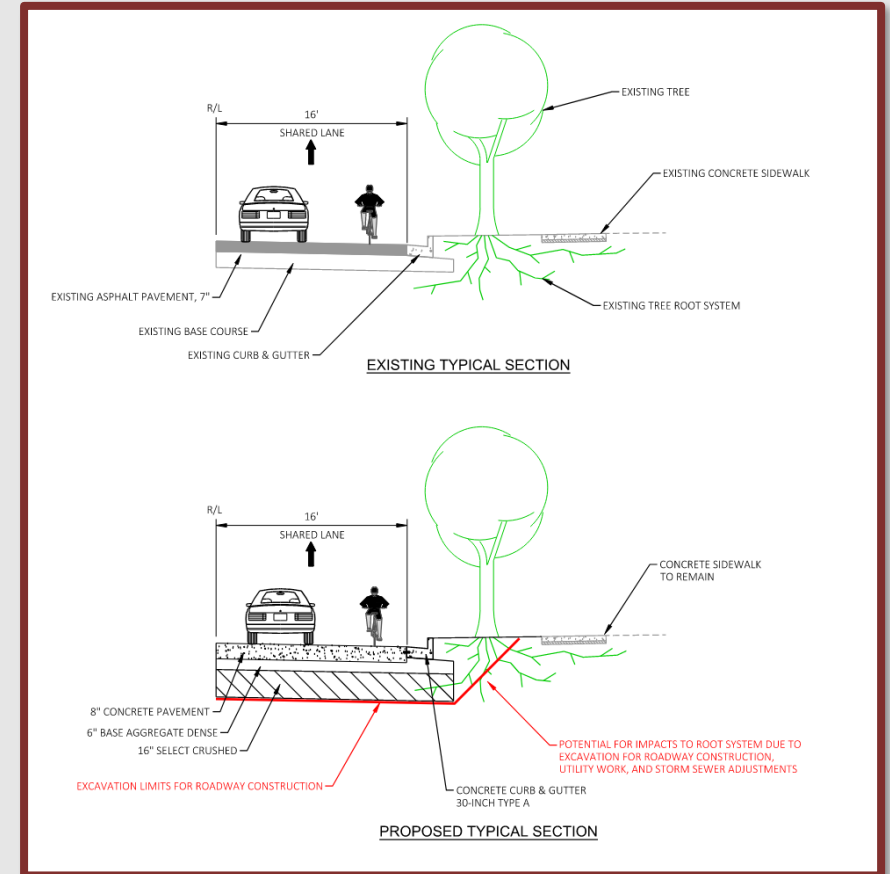
Proposed Improvements



Proposed Improvements

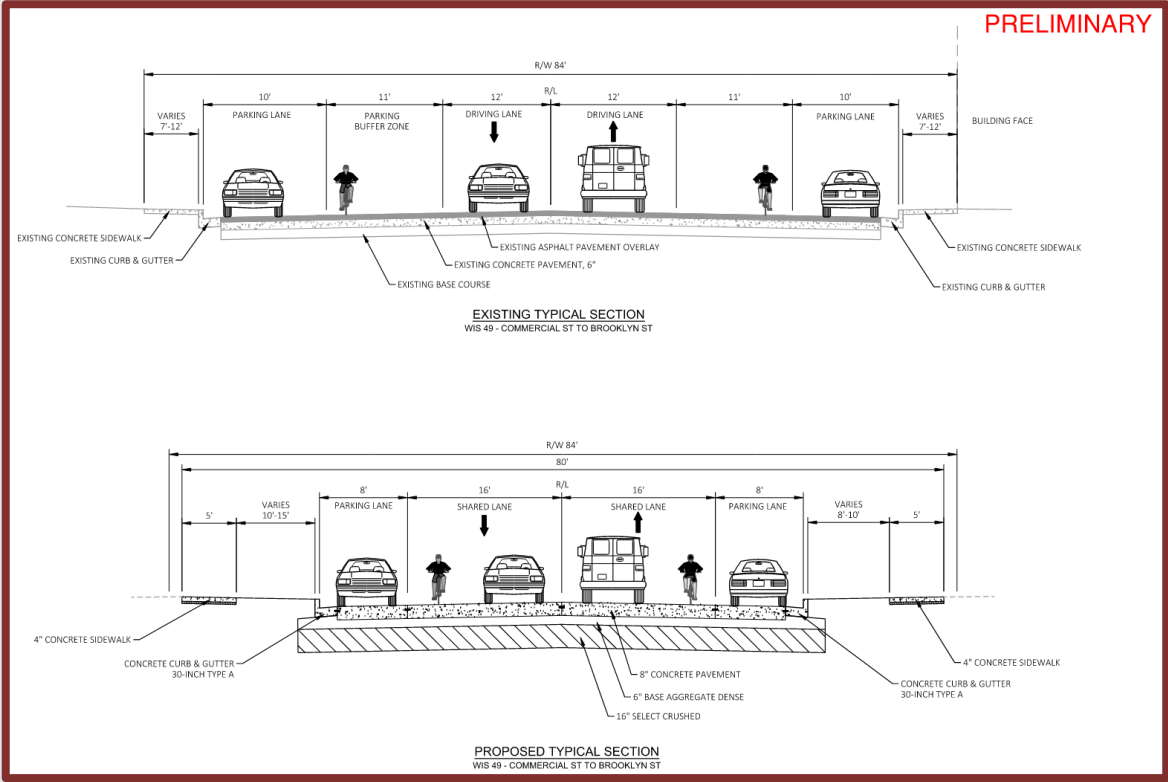
- Roadway
 - Terrace

- Due to 3-foot pavement excavation and utility impacts, there will be tree and tree root impacts
- Saving any trees will be determined during the design process
- Existing lighting will be evaluated for impacts during the design phase



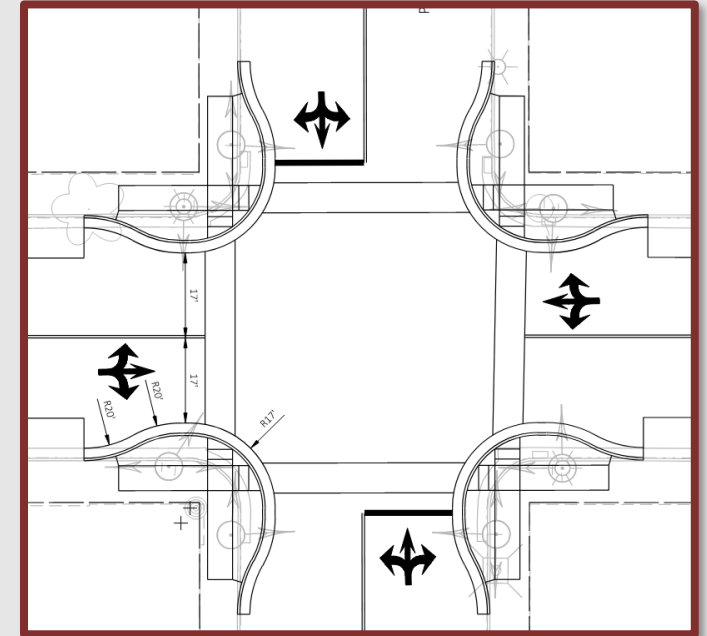
Proposed Improvements

- Narrow Roadway
 - Fox River Bridge to Washington St
 - 16-ft travel and 8-ft parking lanes
 - Terrace width widened
 - South Street to June Street
 - 16-ft travel lanes
 - New grass terrace



Proposed Improvements

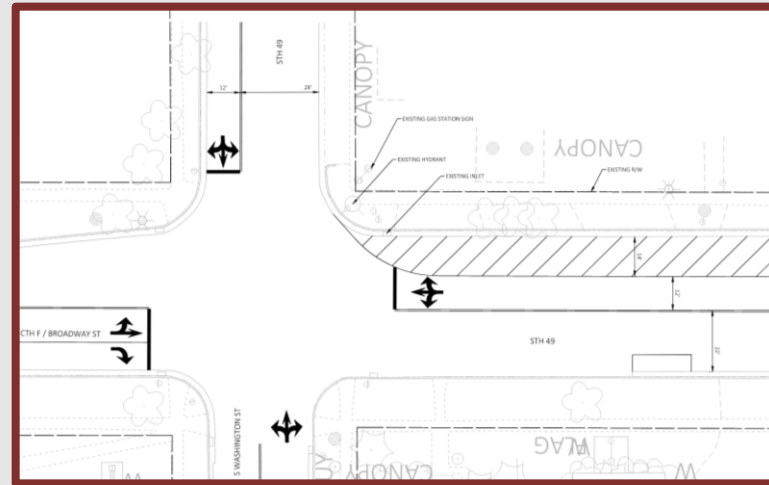
- Municipal facility improvements
 - City sewer/water are deteriorating and outdated
 - Replace sanitary sewer and water (Spring Street to Spring Street)
- Pedestrian improvements
 - Update existing curb ramps to meet current ADA standards as feasible
 - Replace/add crosswalks at most intersections



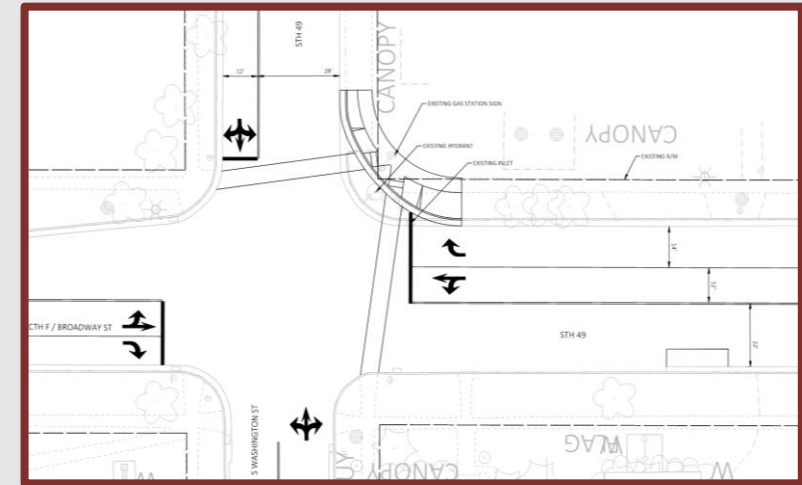
Proposed Improvements

- Washington Street
 - Improve truck turning movements
 - Evaluate Flashing LED Stop Sign
 - Install High Visibility Crosswalk

Alternative #1



Alternative #2



Proposed Improvements

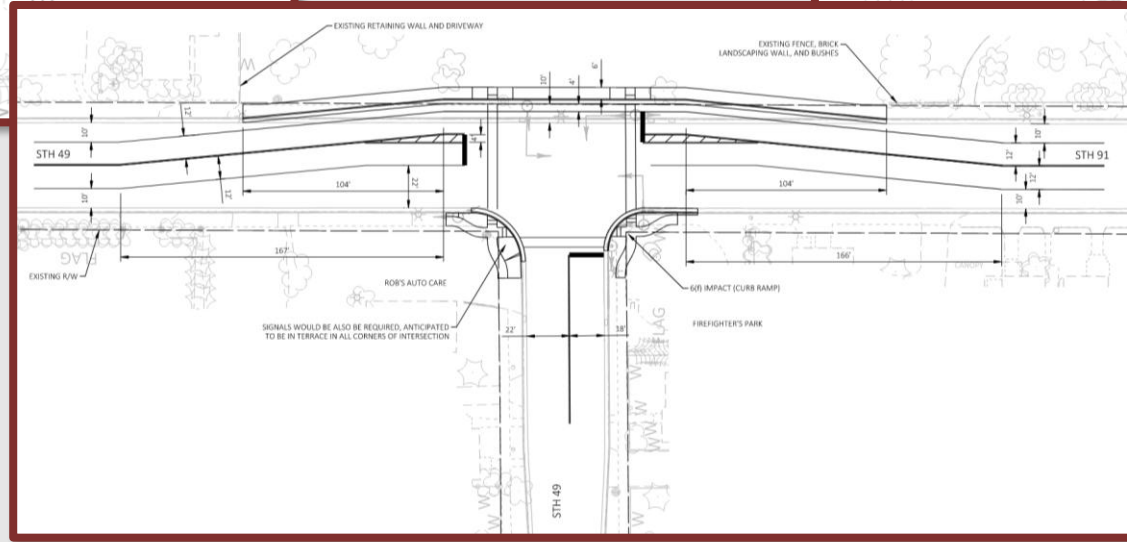
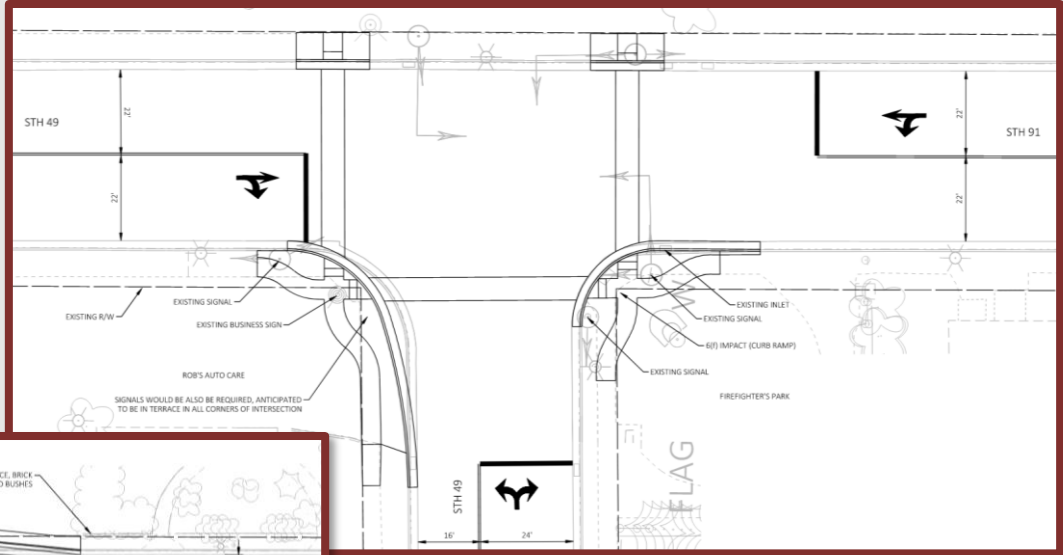
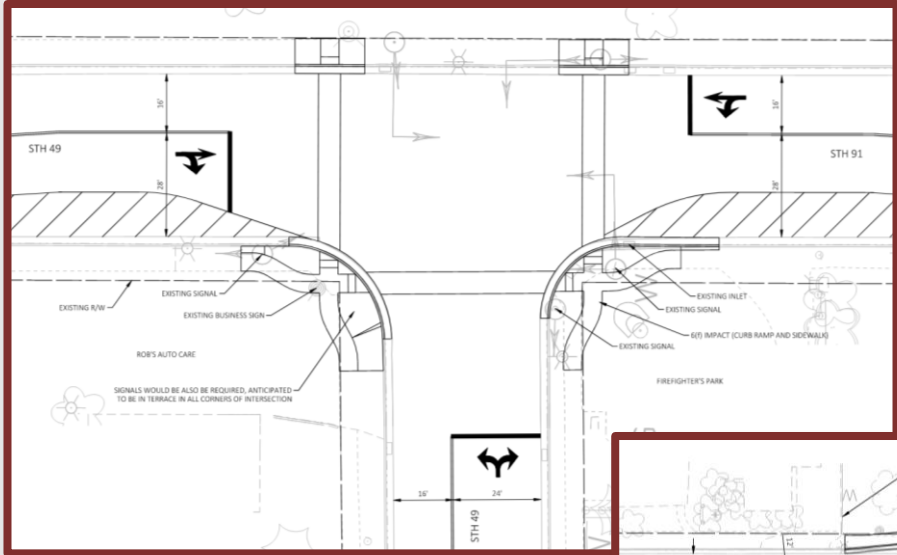
- Pearl Street
 - Remove traffic signals
 - Stop sign control on Pearl Street
 - Evaluate bump-outs
- Wisconsin Street
 - Evaluate traffic signals/stop control
 - Anticipate new traffic signals and pedestrian push buttons



Proposed Improvements

- Huron/Spring Street Intersection
 - Improve truck turning movements
 - Replace traffic signals and pedestrian push button
 - Mark new crosswalks
 - Firefighter's Park Impacts
 - Section 4f/6f coordination

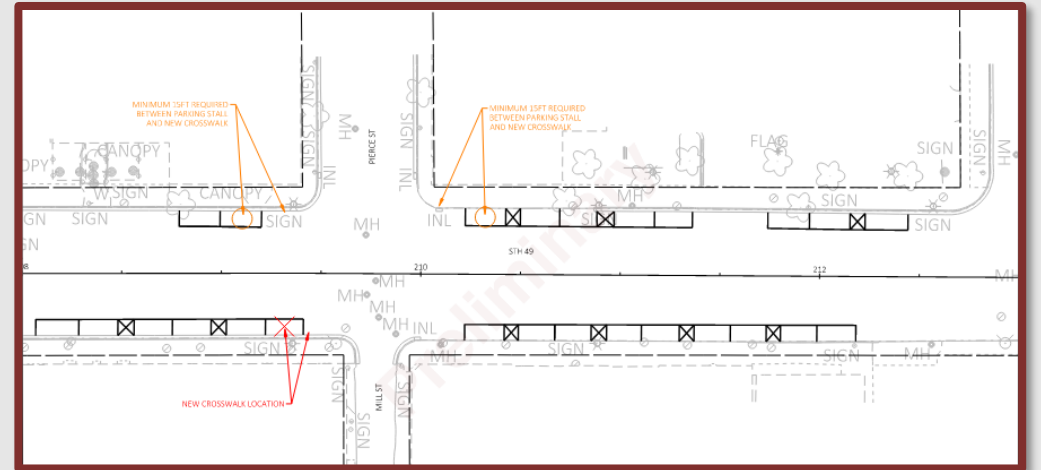
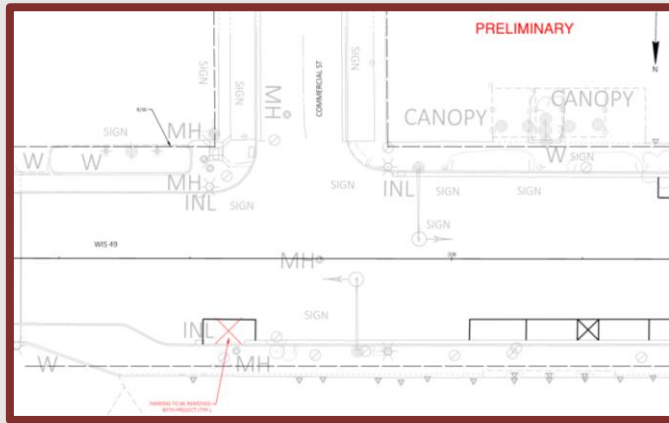
Proposed Improvements



Proposed Improvements

• Parking

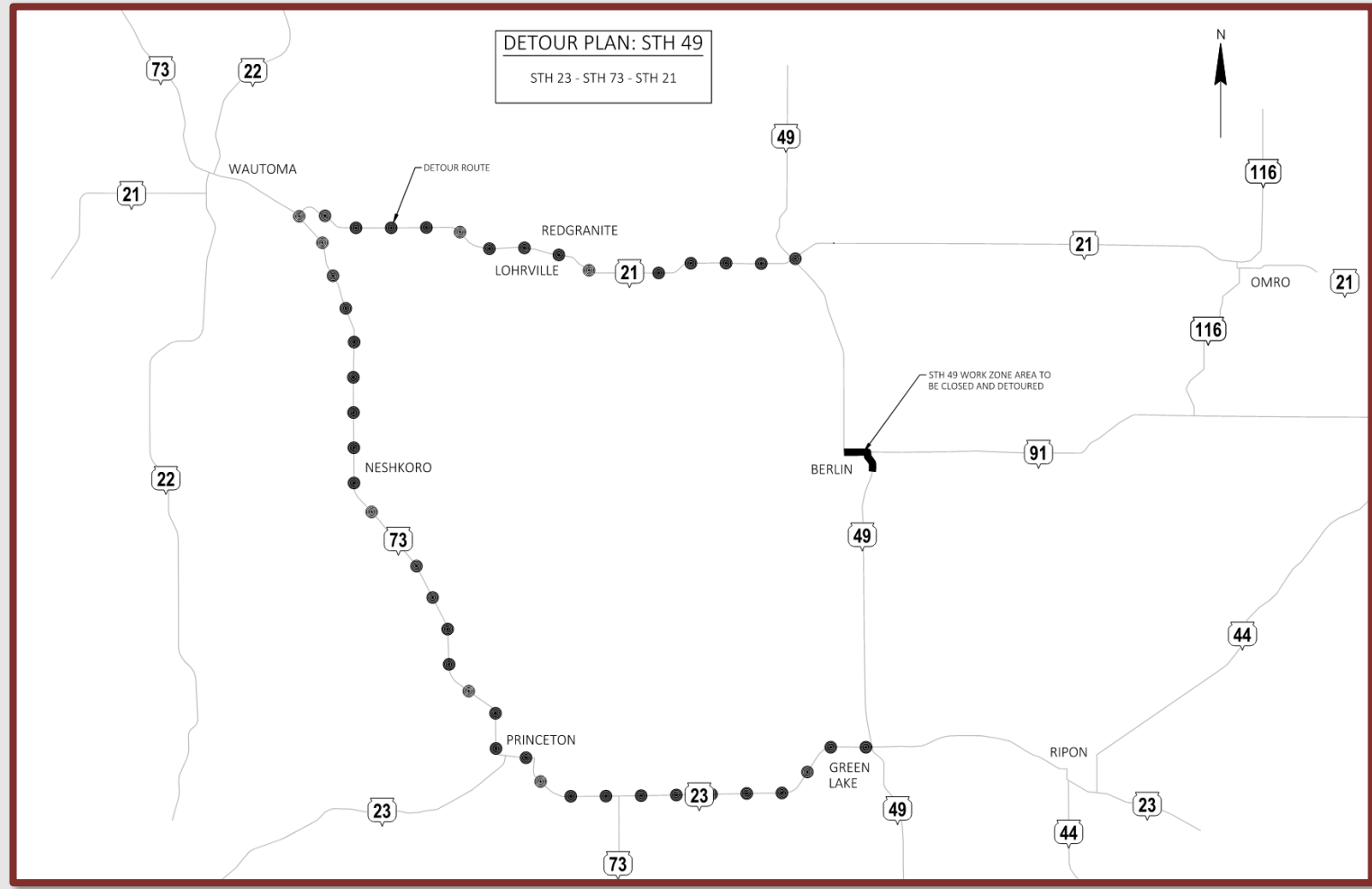
- Review number and location of parking stalls based on current standards and state statutes
- City of Berlin Cost Share



Traffic Control / Traffic Impacts

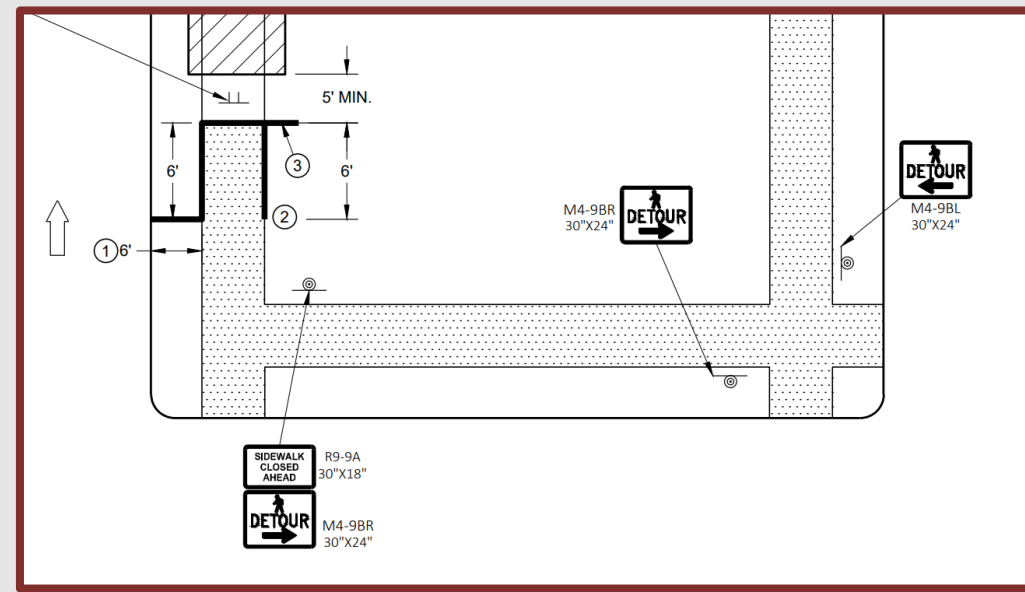
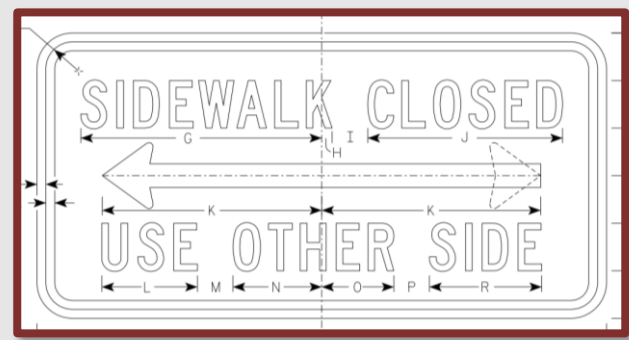
- Construction
 - Currently scheduled for 2030
- Road Closure
 - WIS 49 will be closed to through traffic during construction and detoured WIS 21-WIS 73-WIS 23
 - Access to business/residents/emergency vehicles will be maintained
 - Coordination for postmaster, garbage, bus routes, etc.
- Property and business owners are encouraged to provide information on traffic and access needs on your comment form

Traffic Control / Traffic Impacts



Traffic Control / Traffic Impacts

- Pedestrian accommodation
 - Curb ramp construction to be staggered to allow continued access
 - Temporary crosswalks or pedestrian detours to be used where necessary

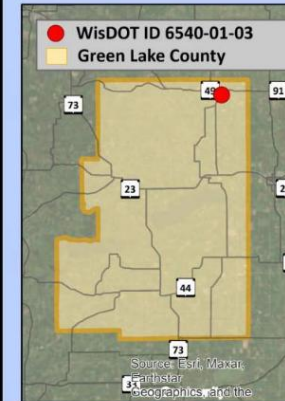
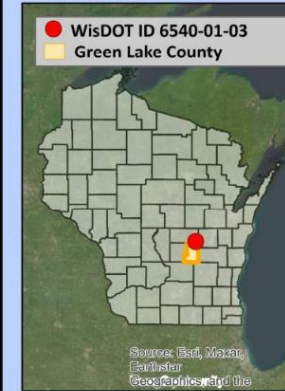


Project Location

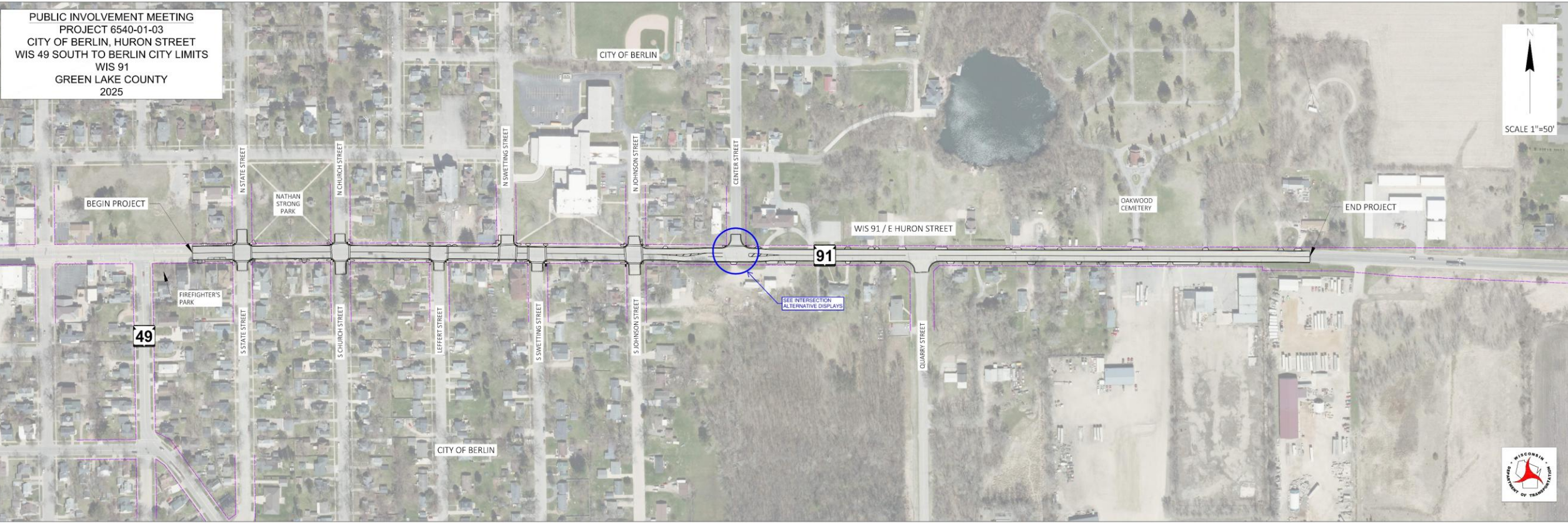
- Project limits
 - Begin: WIS 49 South
 - End: Berlin City Limits
 - Length: 0.7 miles

Project Location Map

Project ID 6540-01-03
Berlin
STH 49 S - Berlin City Limits
WIS 91
Green Lake County



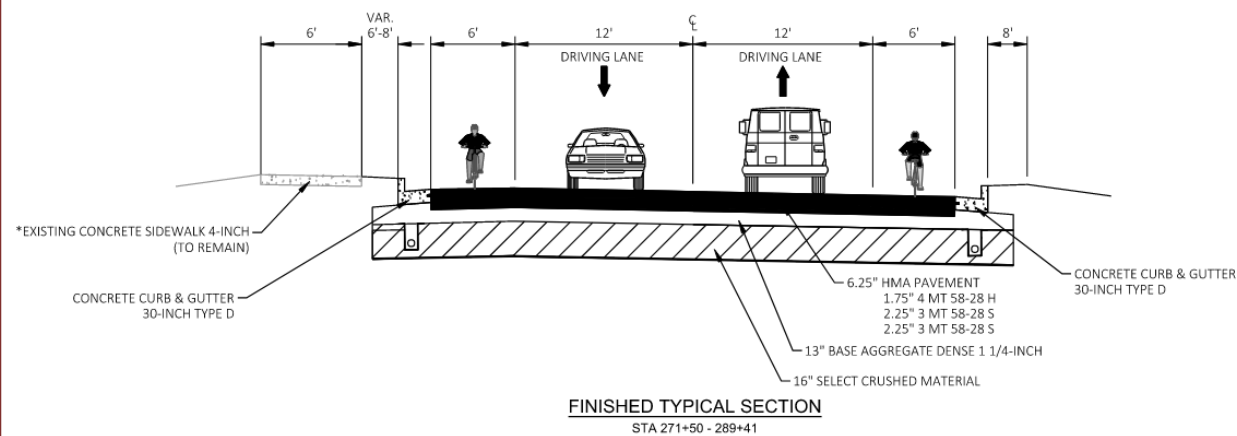
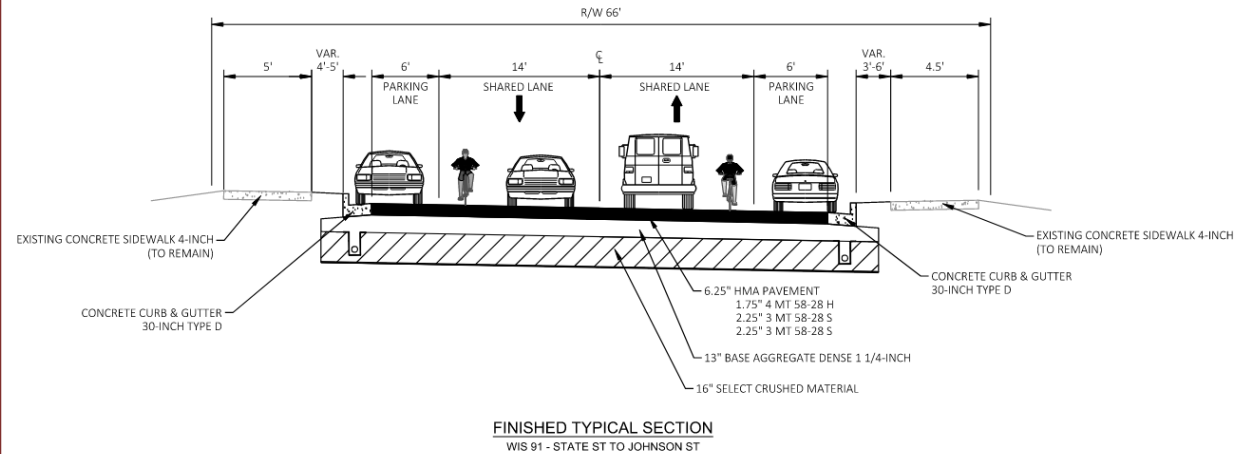
Proposed Improvements



Proposed Improvements

- Roadway
 - Full depth pavement replacement with new asphalt pavement
 - 6.25 inches asphalt pavement
 - 13-inches base aggregate (drains and supports the asphalt pavement)
 - 16-inches subbase and fabric (added support due to poor soils)
 - Underdrain (drains the subbase layer)
 - Replace curb and gutter
 - Maintain existing sidewalk where possible

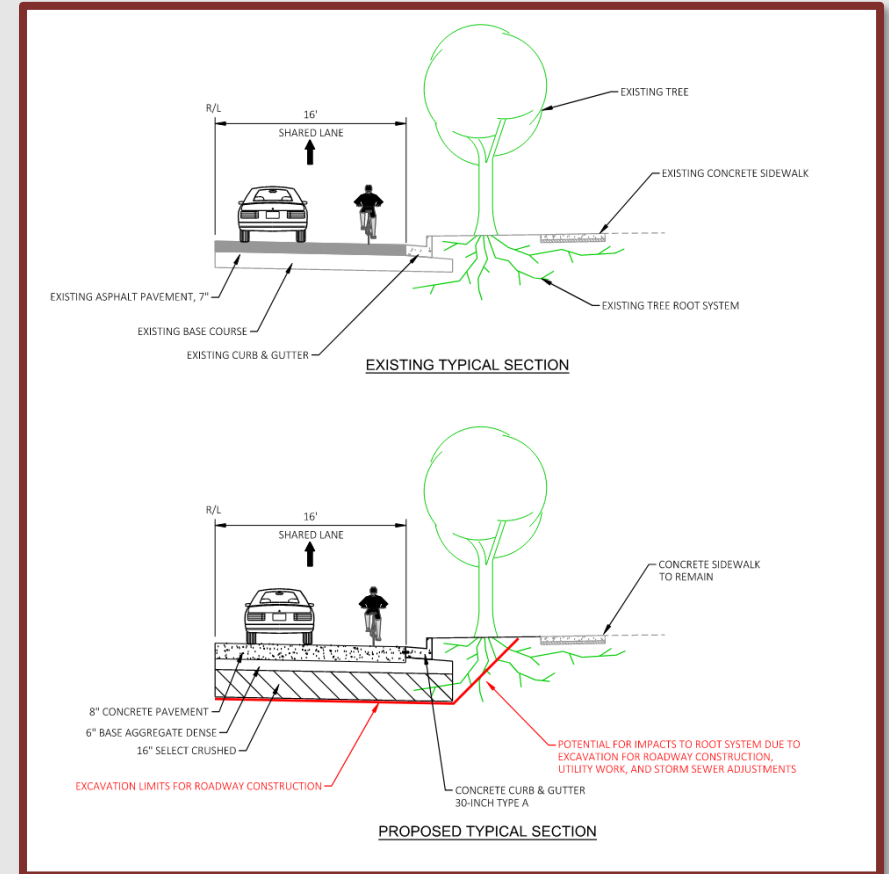
Proposed Improvements



Proposed Improvements

- Roadway
 - Terrace

- Due to 3-foot pavement excavation and utility impacts, there will be tree and tree root impacts
- Saving any trees will be determined during the design process

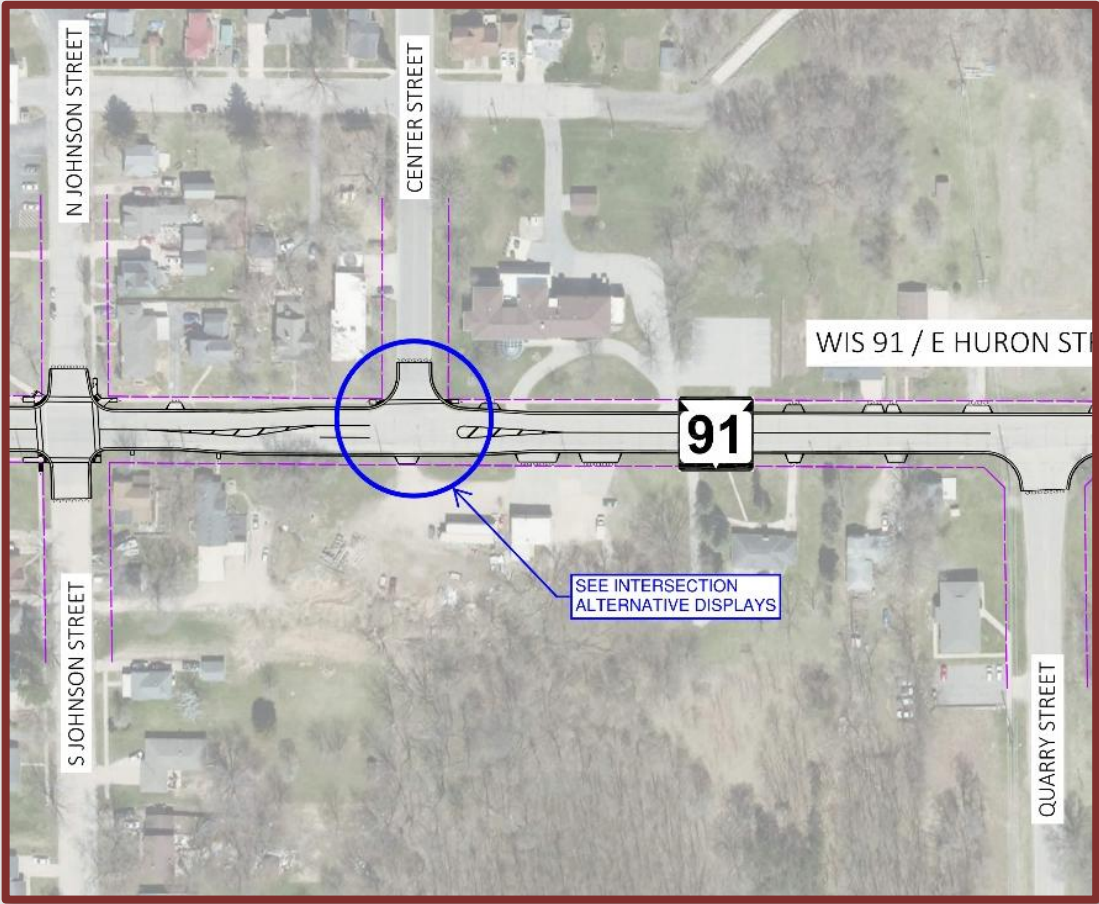
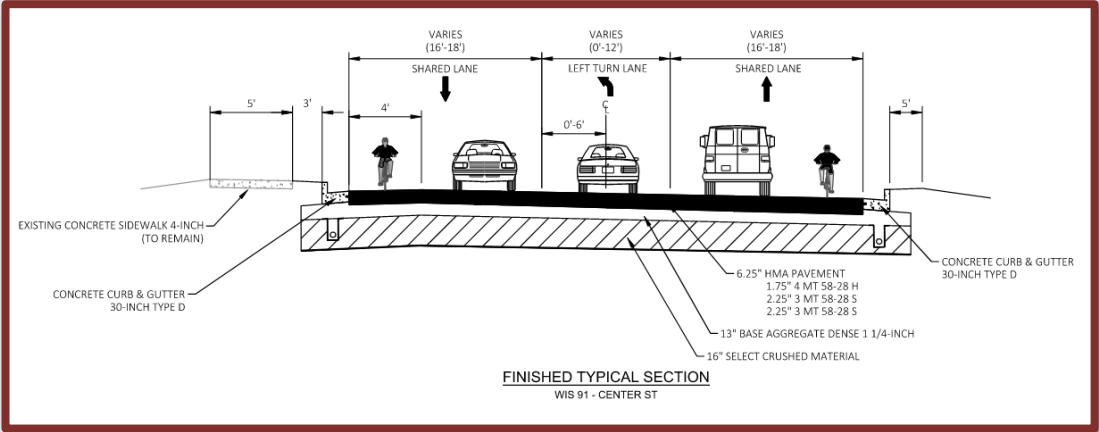


Proposed Improvements

- Municipal facility improvements
 - City sewer and water are deteriorating and outdated
 - Replace sanitary sewer and water (Johnson Street to Berlin City Limits)
- Pedestrian improvements
 - Update existing curb ramps to meet current ADA standards as feasible
 - Replace and add crosswalks at most intersections

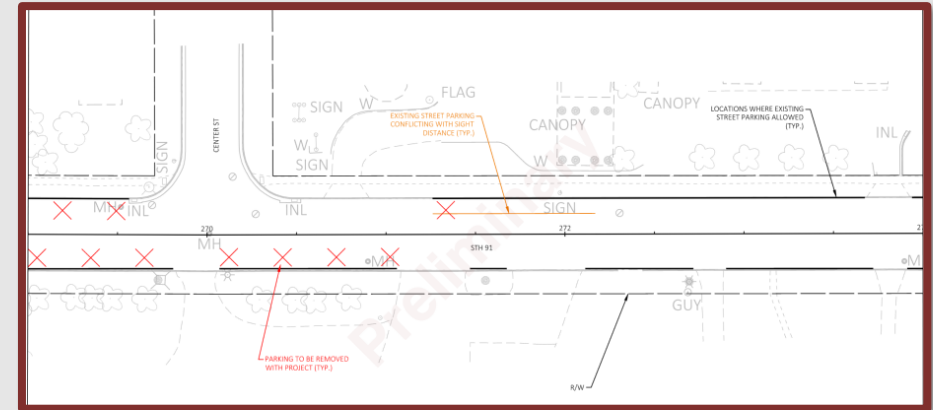
Proposed Improvements

- Center Street Turn Lane
 - High rear-end crash rate
 - Add WIS 91 EB left turn lane



Proposed Improvements

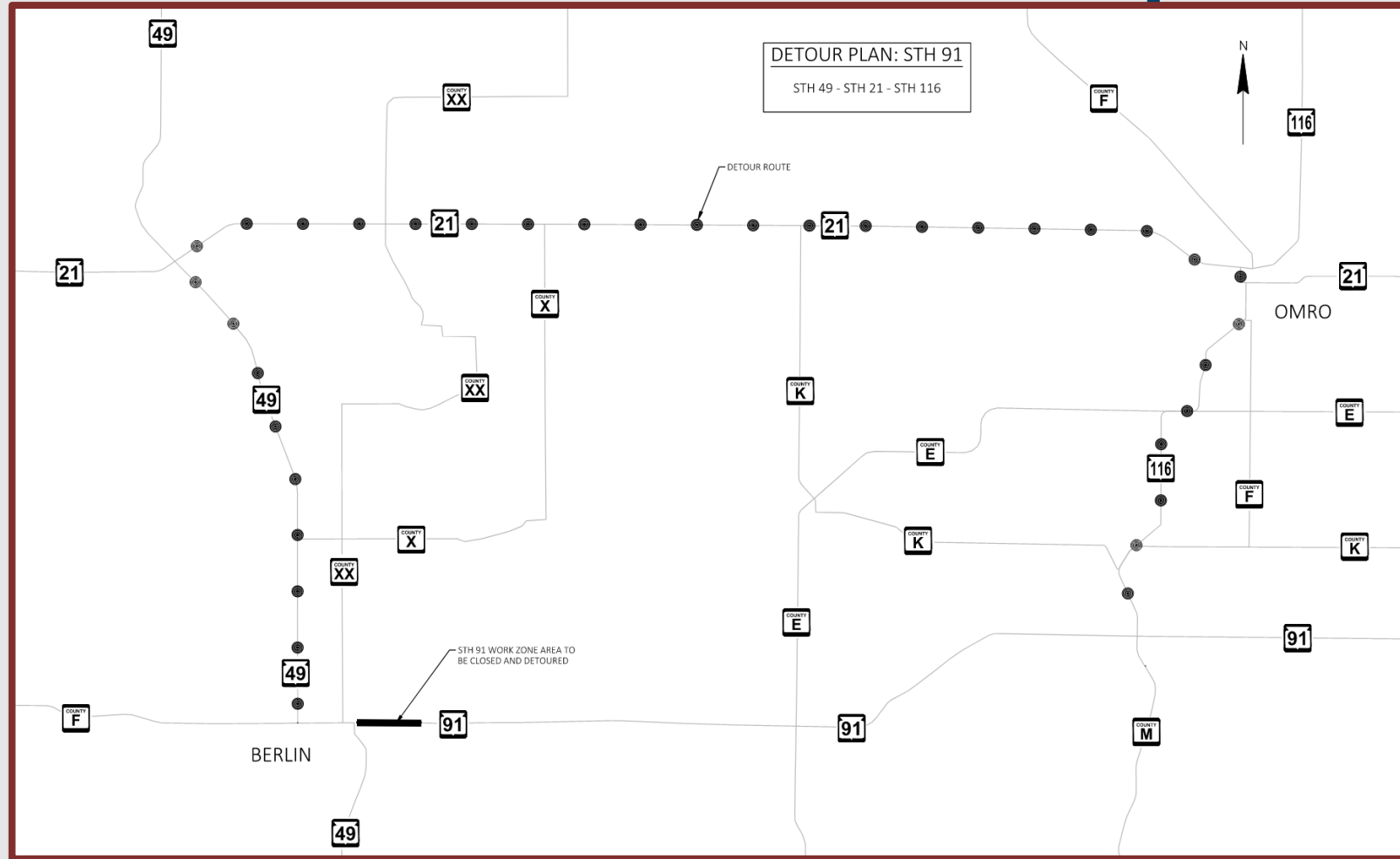
- Parking
 - Review number and location of parking stalls based on current standards and state statutes
 - No parking east of Johnson Street
 - City of Berlin Cost Share



Traffic Control / Traffic Impacts

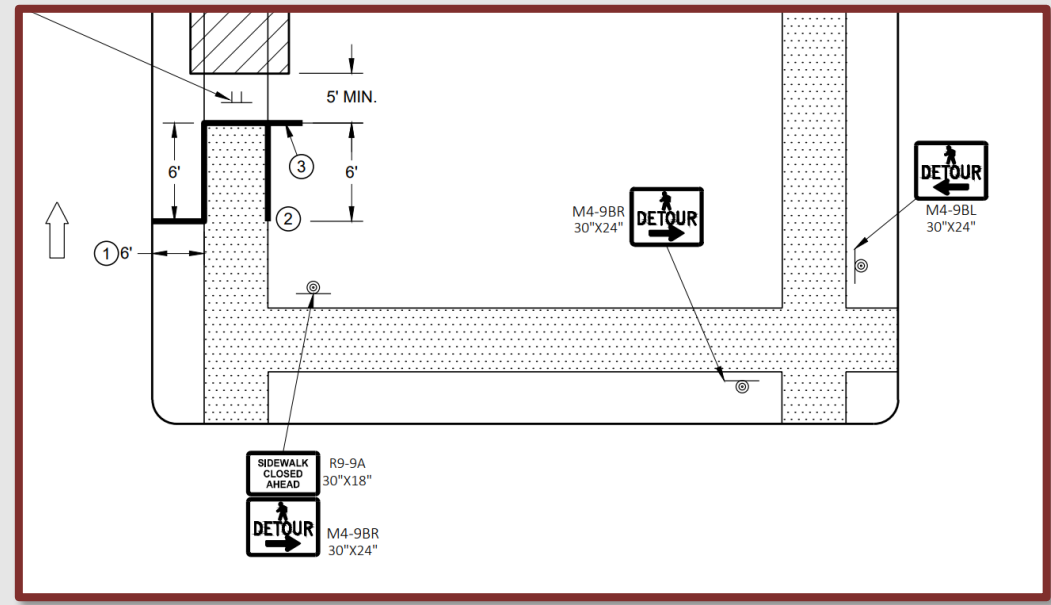
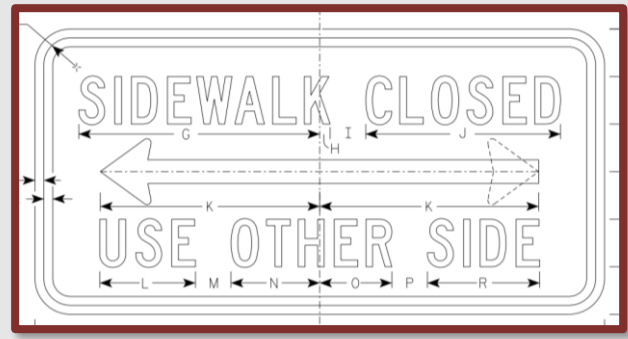
- Construction
 - Currently scheduled for 2029
- Road Closure
 - WIS 91 will be closed to through traffic during construction and detoured WIS 49-WIS 21-WIS 116
 - Access to business/residents will be maintained
 - Coordination for postmaster, garbage, bus routes, etc.
- Property and business owners are encouraged to provide information on traffic and access needs on your comment form

Traffic Control / Traffic Impacts



Traffic Control / Traffic Impacts

- Pedestrian accommodation
 - Curb ramp construction to be staggered to allow continued access
 - Temporary crosswalks or pedestrian detours to be used where necessary



Real Estate

- Right of way and temporary easements are required
 - Permanent right of way may be needed for updates to curb ramps
 - Temporary easements will be required for curb ramps, driveway, and utility connections
- City of Berlin will acquire real estate
 - The real estate acquisition process is anticipated to begin
 - WIS 91: 2026
 - WIS 49: 2027
 - A landowner rights pamphlet is available on the website.



Schedule/Next Steps

- City of Berlin Meeting April 24, 2025
- Local Officials Meeting #1 May 20, 2025
- Public Involvement Meeting #1 June 19, 2025
- Conceptual plan submittal September 2025
- Local Officials Meeting #2 Spring 2026
- Public Involvement Meeting #2 Spring 2026
- Environmental document completion June 2026
- Preliminary plans and reports Fall 2026
- Real estate acquisition Feb 2027 – May 2029
- Final plan submittal May 2029
- Construction 2030

Schedule

- City of Berlin Meeting April 24, 2025
- Local Officials Meeting #1 May 20, 2025
- Public Involvement Meeting #1 June 19, 2025
- Conceptual plan submittal June 2025
- Environmental document completion September 2025
- Local Officials Meeting #2 Fall 2025
- Public Involvement Meeting #2 Fall 2025
- Preliminary plans and reports Fall 2025
- Real estate acquisition Feb 2026 – May 2028
- Final plan submittal May 2028
- Construction 2029

Business Coordination

- In This Together Program
 - <https://wisconsindot.gov/pages/projects/in-together/default.aspx>
 - Tips, tools and resources
 - Business coordination guide
- Project team is here to help
 - What information would help you...
 - Inform customers about the project
 - Coordinate with suppliers
 - Communicate with employees



Public Involvement

- Public comment period will be held until July 11, 2025
 - Via email or phone

Michael Jelinek, Wisconsin Department of Transportation

1681 Second Avenue South

Wisconsin Rapids, WI 54495

(715) 421-8098

Michael.Jelinek@dot.wi.gov



<https://wisconsindot.gov/Pages/projects/by-region/nc/wis49greenlake/default.aspx>



<https://wisconsindot.gov/Pages/projects/by-region/nc/wis91greenlake/default.aspx>



Questions

