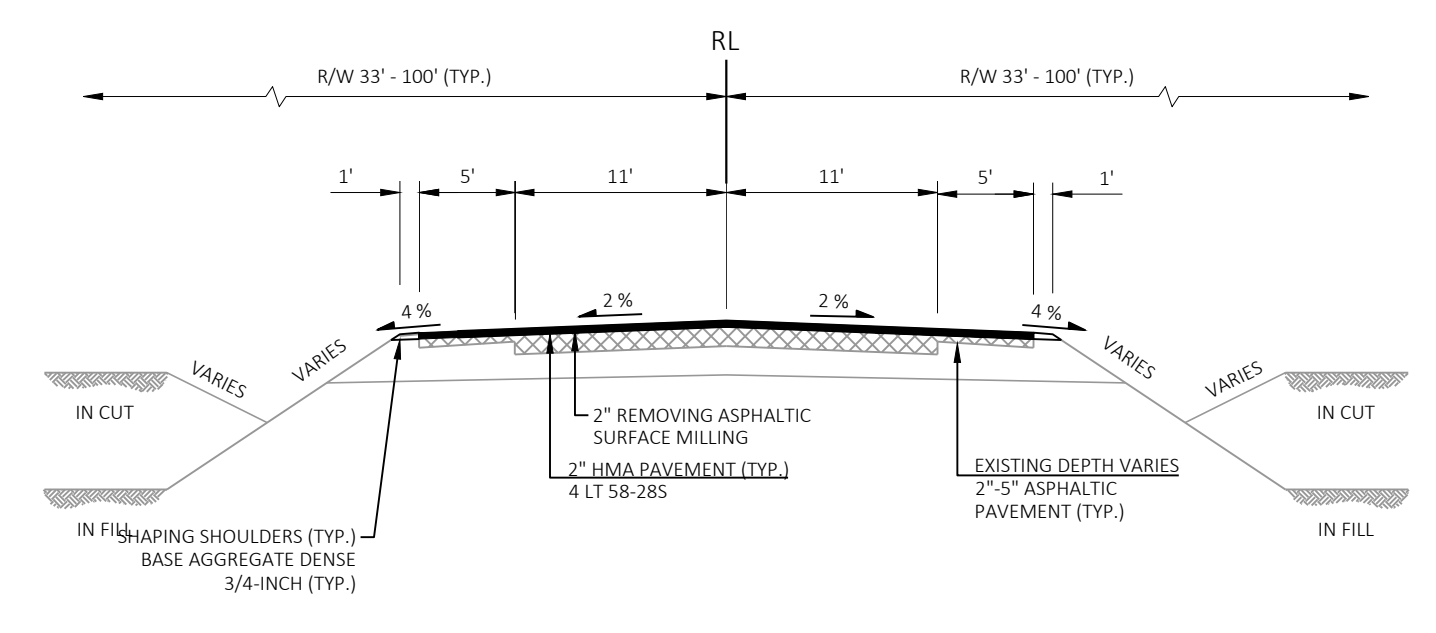
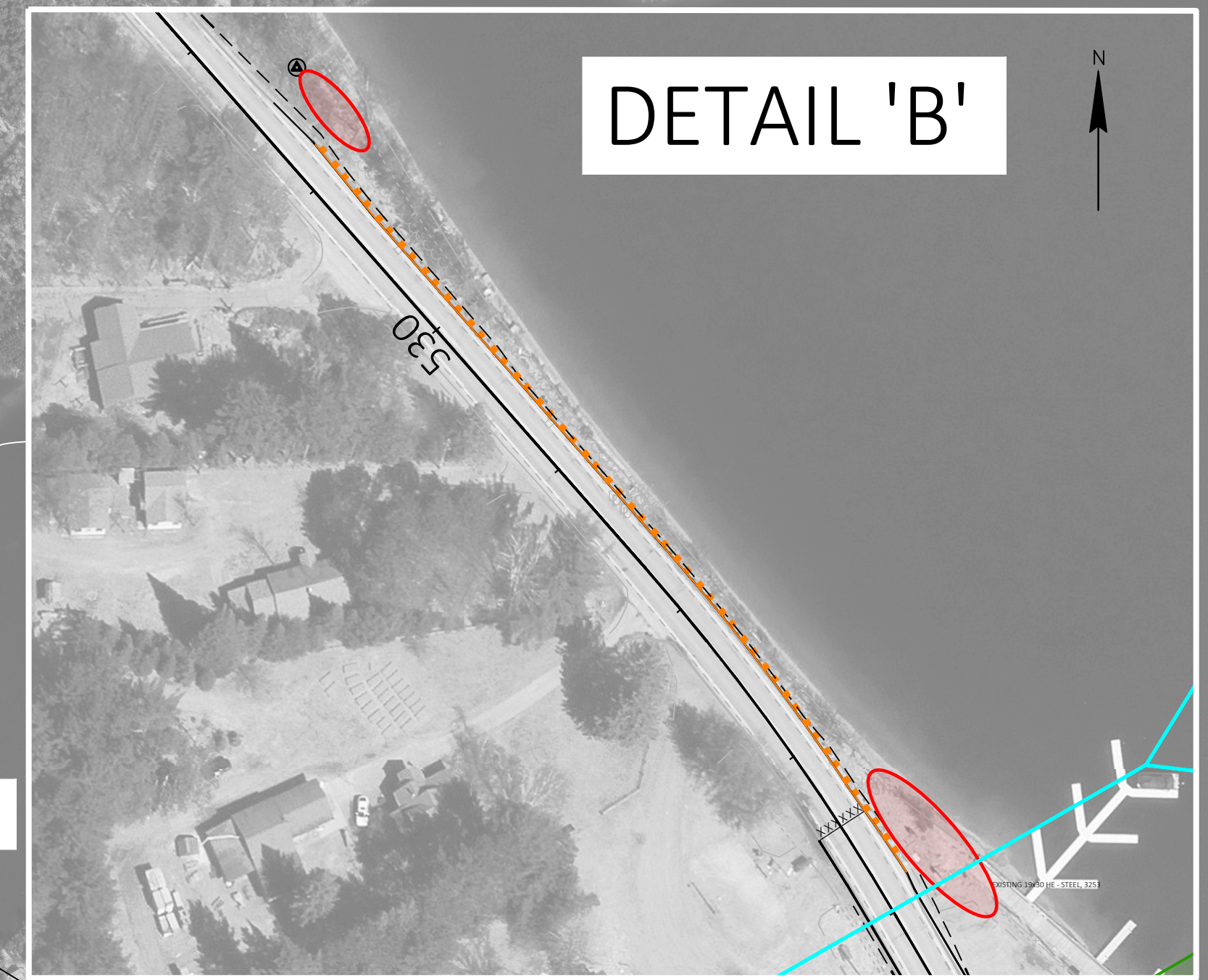
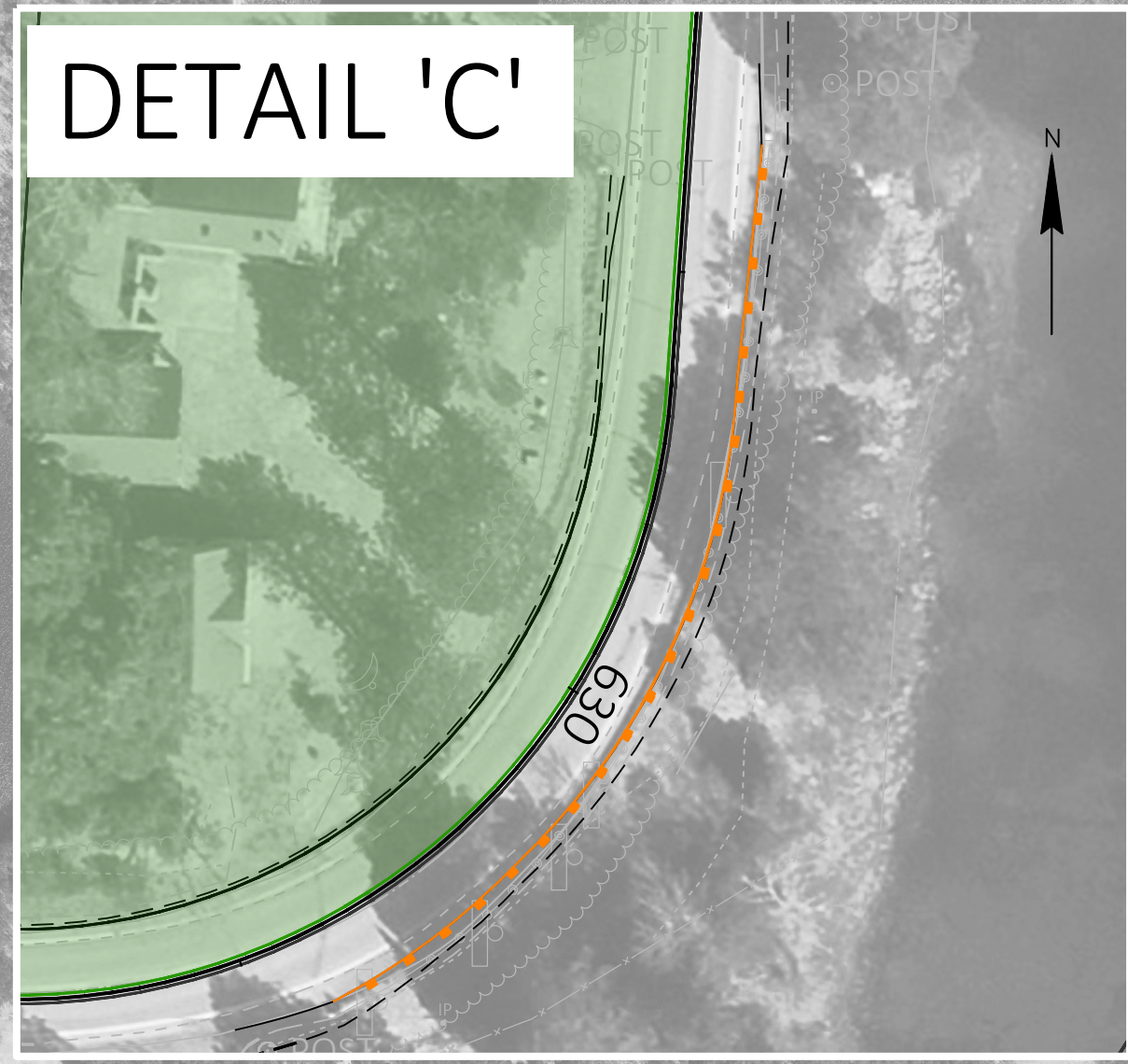
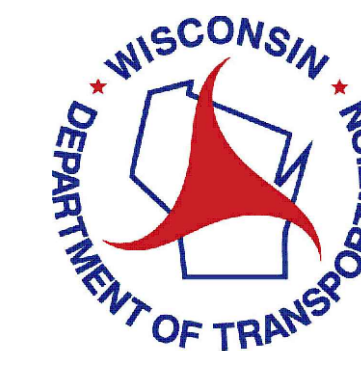


WISDOT PROJECT 9261-06-00
WIS 32
FOREST COUNTY LINE TO US 45
ONEIDA COUNTY



5' SHOULDER EXPANSION

- EXISTING RIGHT OF WAY
- CULVERT REPLACEMENT (IN-KIND)
- HIGH FRICTION SURFACE TREATMENT
- BEAMGUARD REPLACEMENT
- POTENTIAL REAL ESTATE IMPACTS

LEGEND

- 2-IN MILL & OVERLAY, MAINTAIN EXIST SHOULDER WIDTH (3-FIT PAVED, 3-FIT AGG)
- 2-IN MILL & OVERLAY, WIDEN EXIST SHOULDERS: 4-IN DEPTH (5-FIT PAVED, 1-FIT AGG)
- CONCRETE DECK OVERLAY & BEAMGUARD REPLACEMENT (EXIST B-43-31)
- WHITEFISH LAKE STRUCTURE REPLACEMENT & BEAMGUARD REPLACEMENT (EXIST C-43-16)
- COUNTY LINE