

Public Involvement Meeting WIS 22

County B (south) to County N (north)

Waupaca County

Oct. 3, 2024

Introductions

- WisDOT
 - Tim Hanley, WisDOT Project Manager
 - Todd Laska, WisDOT Project Leader
 - Nicole Lysne, WisDOT Supervisor
- Project design team
 - Stephanie Christensen, EMCS
 - Erik Oleson, EMCS



Purpose of Public Involvement

- Our objective during this meeting is to discuss the project and obtain your input on the following along WIS 22
 - Identified needs and proposed improvements
 - Preliminary traffic management



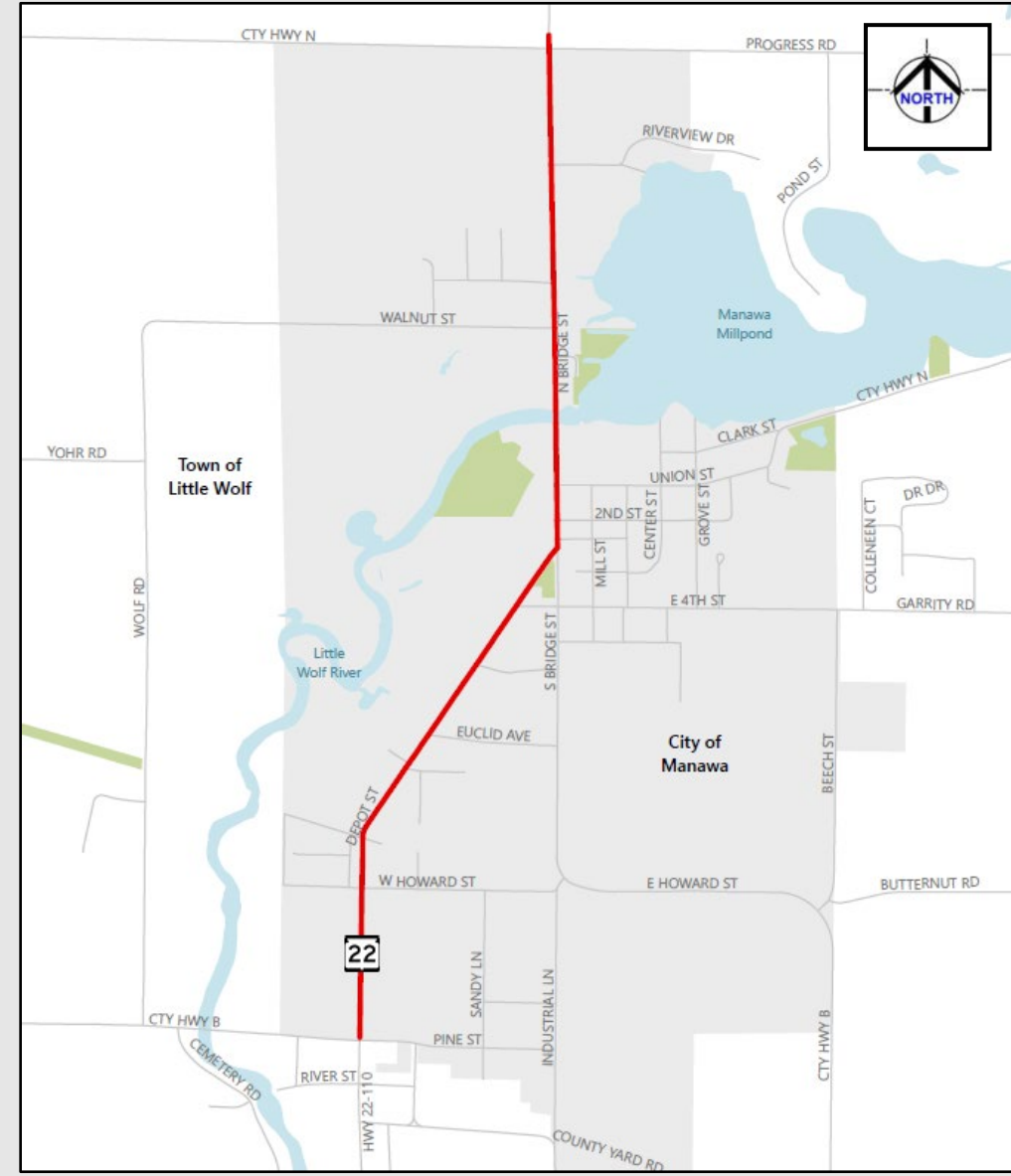
Presentation Agenda

- Project Location
- Project Information
- Purpose and Need
- Proposed Improvements
- Traffic Management
- Project Costs
- Real Estate
- Business Coordination
- Project Schedule
- Open Discussion



Project Location

- Two miles of WIS 22
 - County B (south) to County N (north)
- City of Manawa
 - Begin and end limits extend into the Town of Little Wolf



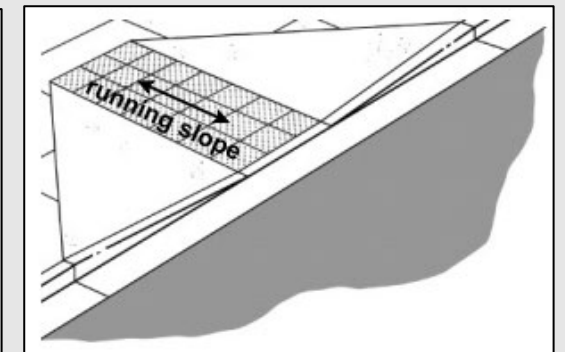
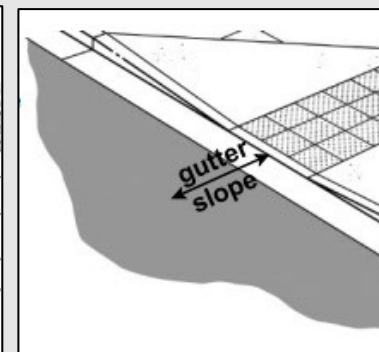
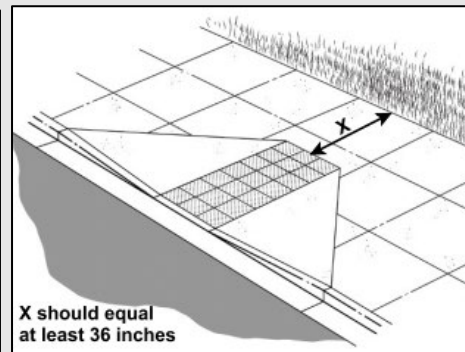
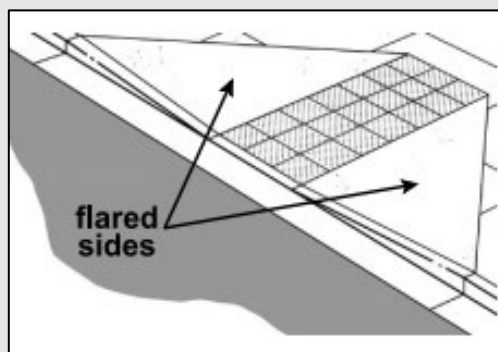
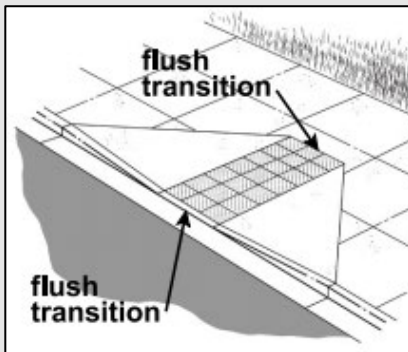
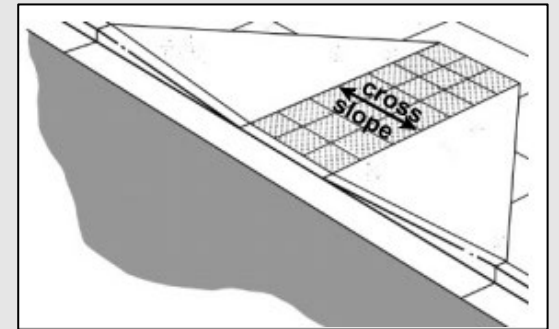
Project Needs

- Deteriorated pavement is the primary project need
 - Pavement was reconstructed in 2000 and 2002
 - Cracking and rutting throughout
- Spot curb and gutter deterioration
- Deteriorating storm drains
- Erosion at culvert and inlets near County N/Progress Road



Additional Project Needs

- Curb ramps do not meet Americans with Disability Act (ADA) standards
- No pedestrian connectivity on the west side of WIS 22 near Roberts Street



Project Information

- Proposed improvements
 - Resurfacing the asphalt pavement
 - Replacing spot curb and gutter sections
 - Repairing storm drains
 - Erosion repair at the culverts and inlets near County N/Progress Road
 - Installing new pavement marking including shoulder edge lines



Project Information

- Pedestrian improvements
 - Replace all curb ramps for ADA compliance, where feasible
 - Curb ramp bump outs are proposed at Second Street and County N (south) to improve crossings for pedestrians
 - Adding new sidewalk on the west side of WIS 22 from Roberts Street to the auto parts store (approximately 350-feet) to improve pedestrian connectivity



Proposed Traffic Impacts & Project Costs

- Construction is currently scheduled for 2028
 - No work will occur during the Manawa Rodeo event
- Traffic control
 - Crews will manage traffic using single lane closures with flagging operations and lane shifts. Motorists can expect some delays to occur.
 - Pedestrian traffic will also be maintained on temporary routes
 - Parking will be restricted in work areas
- Current estimated construction cost is \$2M to \$3M



Other Projects

- WIS 22: WIS 54 to County B
 - Construction is scheduled for 2027, but could occur as early as 2026
 - WisDOT Project Manager
 - Wendy Arneson, P.E.
 - (715) 421-7391
 - Wendy.Arneson@dot.wi.gov
 - Project website:
<https://wisconsindot.gov/Pages/projects/by-region/nc/wis22waupaca/default.aspx>



Real Estate

- Right of way and temporary easements are required
 - Temporary easements will be required for curb ramps, temporary pedestrian routes, and inlet repairs
 - Minor fee acquisition may be required near some of the curb ramps
- WisDOT will acquire real estate
 - Preliminary real estate needs shown on the exhibits
- Real estate brochure available



Real Estate

- Parkland coordination
 - A temporary easement is proposed within the city's Triangle Park to accommodate a temporary pedestrian route
 - Coordination is ongoing with the city
 - Acquisition of right of way from parklands is subject to agency review and approval of the environmental document
- Please offer any specific comments you may have related to the temporary use of parklands for the project work



Business Coordination

We're In This Together!

- Visit wisconsindot.gov/together
 - Tips, tools and resources
 - Business coordination guide
- Project team is here to help
 - What information would help you...
 - Inform customers about the project?
 - Coordinate with suppliers?
 - Communicate with employees?



Project Update/Next Steps

- Initial public notifications – Sept. 2023
- Local officials meeting – Sept. 9, 2024
- Public involvement meeting – Oct. 3, 2024*
- Environmental document – fall 2024
- Preliminary plans – spring 2025
- Right of way acquisition – summer 2025 to spring 2027
- Final plans – May 1, 2027
- Construction – 2028

*Additional public meetings will be held, as required, during the design and construction process.



Public Input & Comments

- A public involvement comment period will be held until Oct. 17, 2024

- Via email or phone

- Tim Hanley, P.E.
- Wisconsin Department of Transportation
- 1681 Second Avenue South
- Wisconsin Rapids, WI 54495
- (715) 421-8050
- Timothy.Hanley@dot.wi.gov

Deaf, hard-of-hearing, deaf-blind, and speech-disabled persons should contact the Wisconsin Relay Service by dialing 711.

- Project website:

<https://wisconsindot.gov/Pages/projects/by-region/nc/wis22waupacaman/default.aspx>

