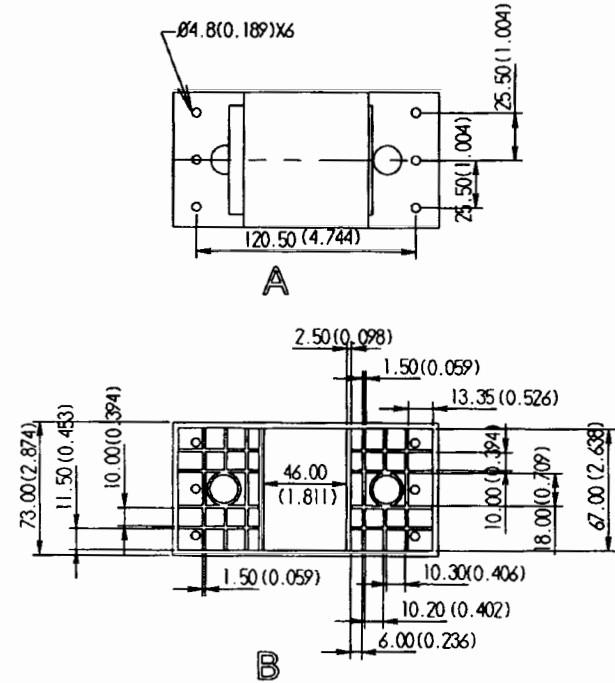
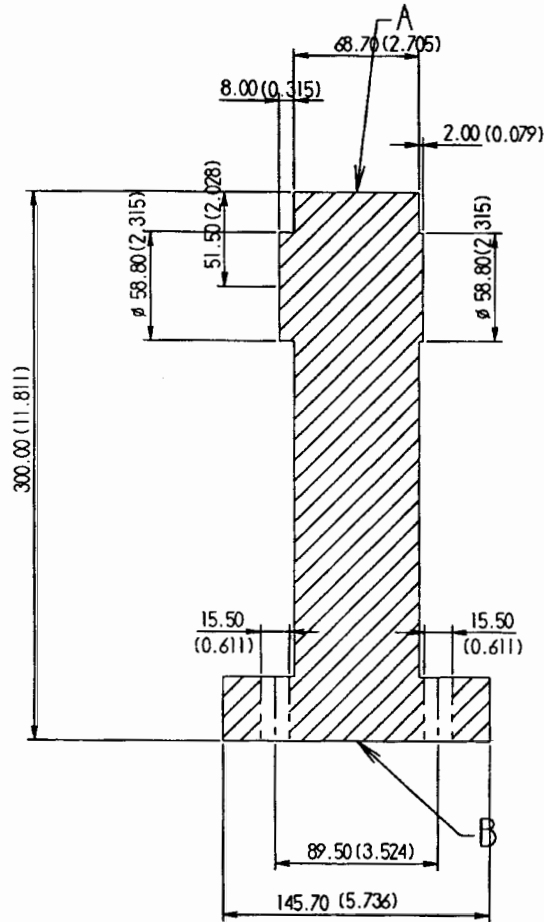


REVISIONS				
ZONE	REV	DESCRIPTION	DATE	APPROVED
			6/28/11	



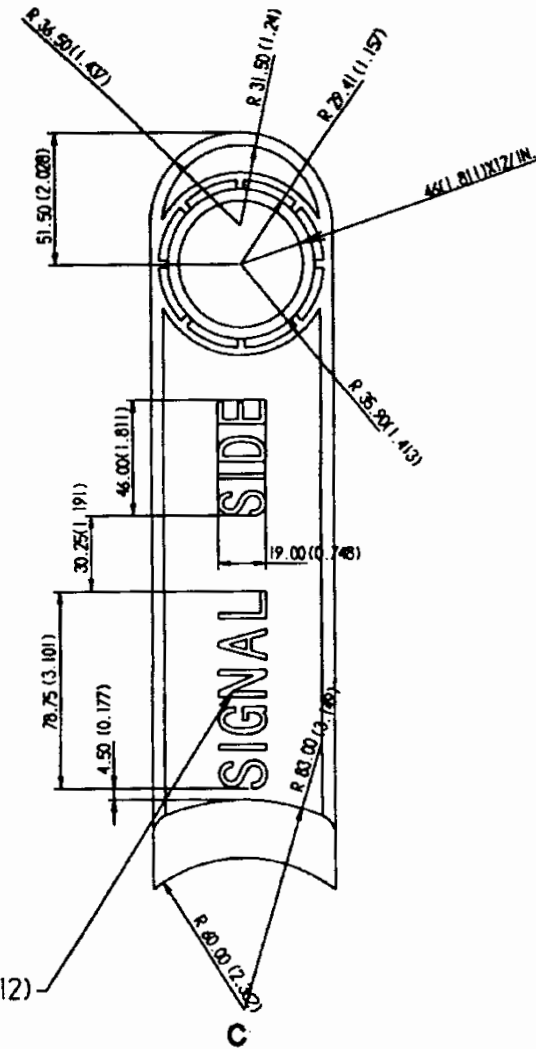
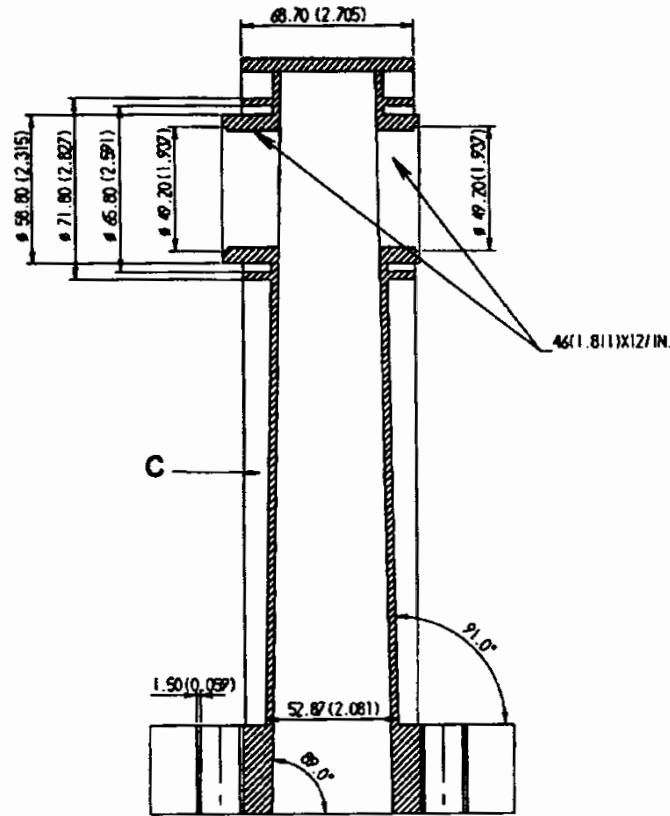
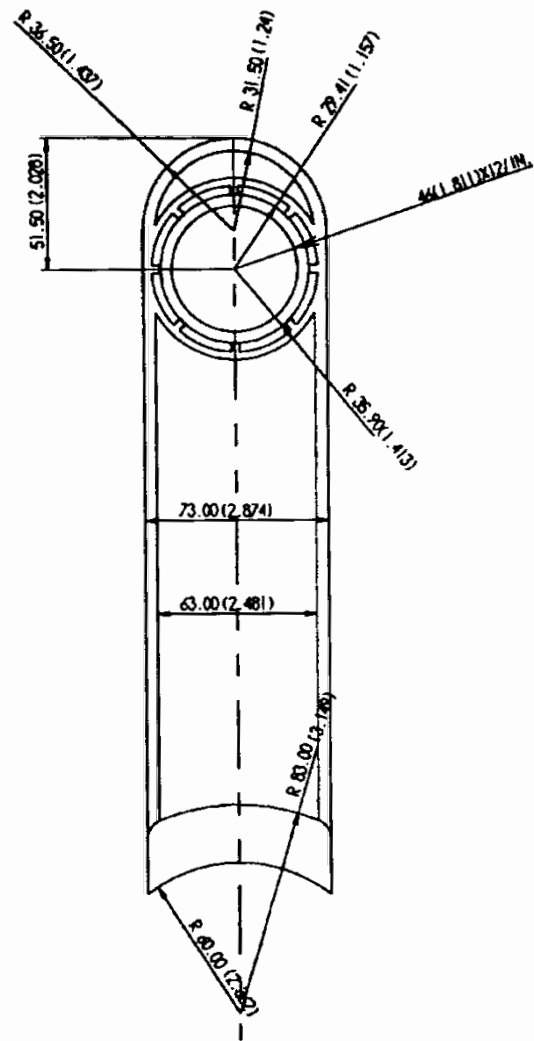
Component Products, Inc.
 521 Morse Avenue
 Schaumburg, IL 60193
 Tel (847) 301-1000
 Fax (847) 301-0100

CPI-SOPB-1 (BLACK)

SIDE OF POLE BRACKET
 MATERIAL: POLYCARBONATE

SIZE	Drawn By:	DWG NO.	CPI-SOPB-1	REV
SCALE	CM (INCHES)	SHEET	1 OF 2	

REVISIONS				
ZONE	REV	DESCRIPTION	DATE	APPROVED
			6/28/11	



Component Products, Inc. 521 Morse Avenue Schaumburg, IL 60193 Tel (847) 301-1000 Fax (847) 301-0100		CPI-SOPB-1 (BLACK)		
		SIDE OF POLE BRACKET MATERIAL: POLYCARBONATE		
SIZE	Drawn By:	DWG NO.	REV	
		CPI-SOPB-1		
SCALE	CM (INCHES)	SHEET	2 OF 2	