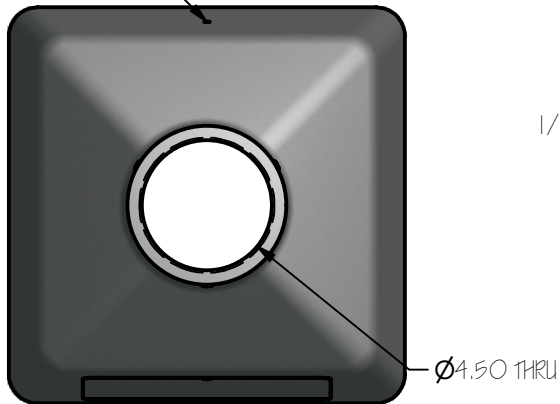
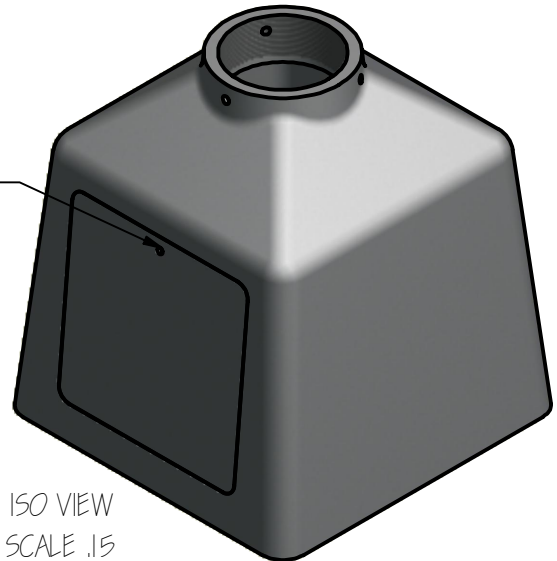


1/4-20 UNC
THRU REAR OF BASE

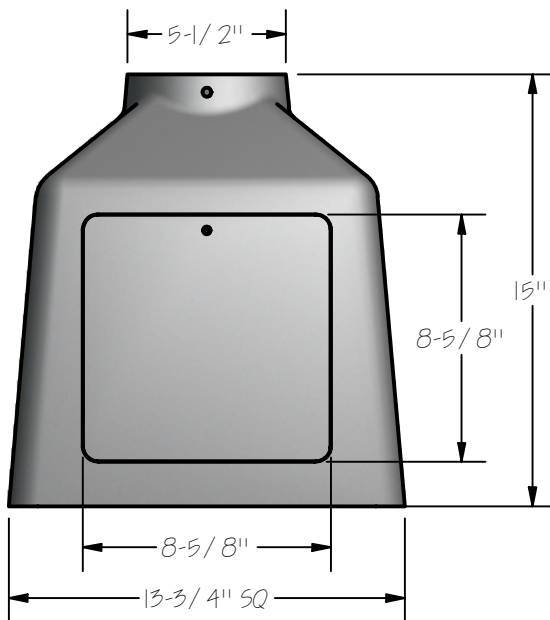


TOP VIEW
SCALE .15

1/4-20 UNC



ISO VIEW
SCALE .15



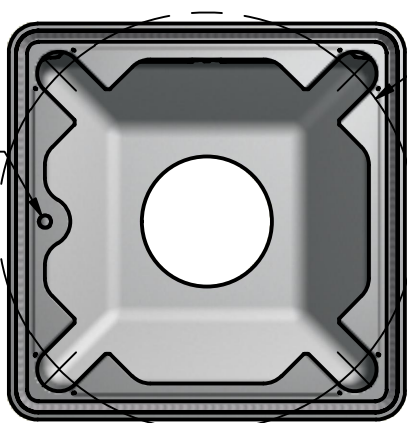
FRONT VIEW
SCALE .15

NOTES:

TRANSFORMER BASE MANUFACTURED OF ALUMINUM ALLOY 356-T6

ADHESIVE BREAKAWAY AND CAUTION LABELS TO APPEAR ON INSIDE WALL
OPPOSITE DOOR OPENING


1/2-13 UNC
GROUND
LOCATION



14-1/2" BC MAX
12" BC MIN

BOTTOM VIEW
SCALE .15


T5-1000



flagpoles, inc.

ALUMINUM LIGHT STANDARDS
TUBULAR METAL PRODUCTS

95 GNARLED HOLLOW RD.
EAST SETAUKET, N.Y.
11733

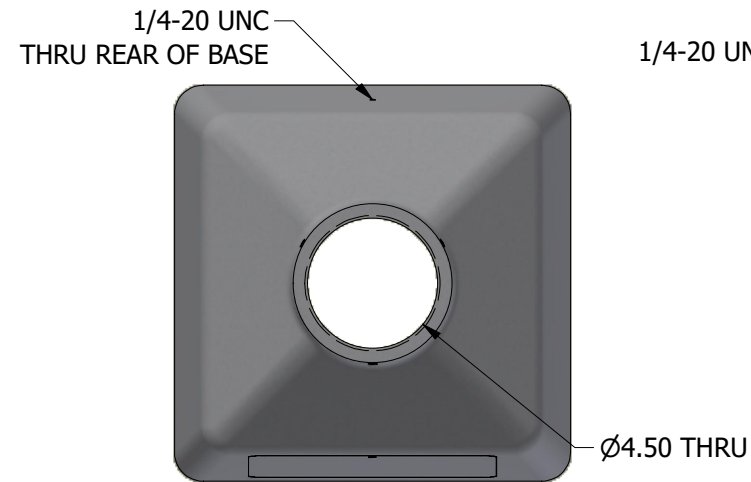
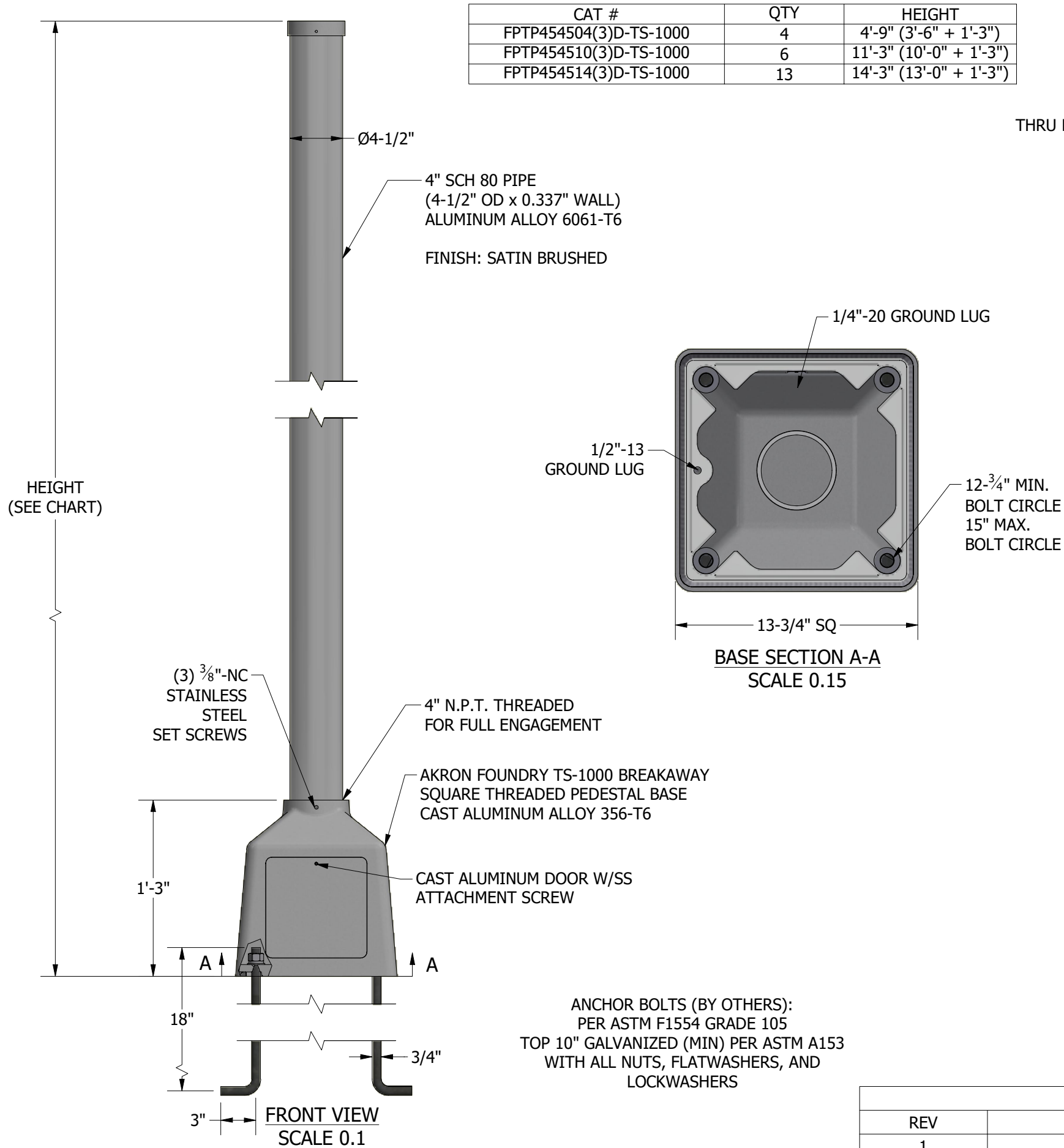


TUBULAR PRODUCTS, INC.

PROJECT: DOT#52 / GLARUS/VERONA DIST: CISCO

CONTRACTOR: CUMMINGS & TURK AGENT: ENTERPRISE LT'G

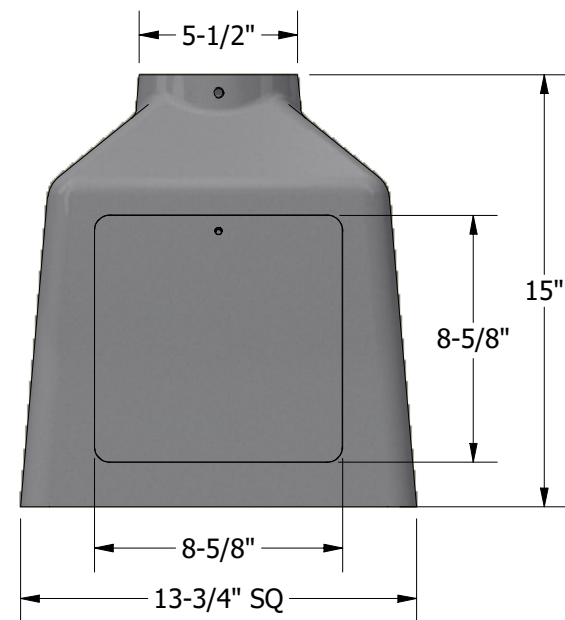
DRAWN BY: SAF	DATE: 04/12/2022	MATERIAL: AS NOTED
CHK'D BY: SAF	APP'D:	DRAWING #:
SCALE: AS NOTED	WORK ORDER #: 61958	18205





TOP VIEW
SCALE .15



ISO VIEW
SCALE .15



FRONT VIEW
SCALE .15

 <div>95 GNARLED HOLLOW RD. EAST SETAUKET, N.Y. 11733</div> <div>ALUMINUM LIGHT STANDARDS TUBULAR METAL PRODUCTS</div>		 <div>TUBULAR PRODUCTS, INC.</div>	
PROJECT: WISDOT #17		DIST: CISCO	
CONTRACTOR: DEDICATED CONTRACTORS		AGENT: ENTERPRISE LT'G	
DRAWN BY: BH	DATE: 03/07/24	MATERIAL: AS NOTED	
CHK'D BY: SAF	APP'D:	DRAWING #:	
SCALE: AS NOTED	WORK ORDER #: 65854	20227.2	

REVISION HISTORY		
REV	DESCRIPTION	DATE
1	REVISED CHART	3/12/2024
2	REVISED ANCHOR BOLT MATERIAL GRADE	9/12/2024