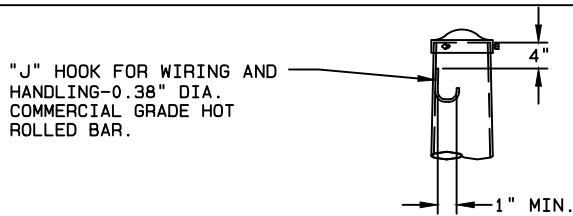


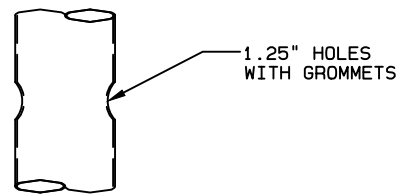
DESIGN CRITERIA:  
2001 AASHTO STANDARD SPECIFICATIONS FOR  
STRUCTURAL SUPPORTS FOR HIGHWAY SIGNS,  
LUMINAIRES, AND TRAFFIC SIGNALS.

DESIGN WIND SPEED = 90 MPH

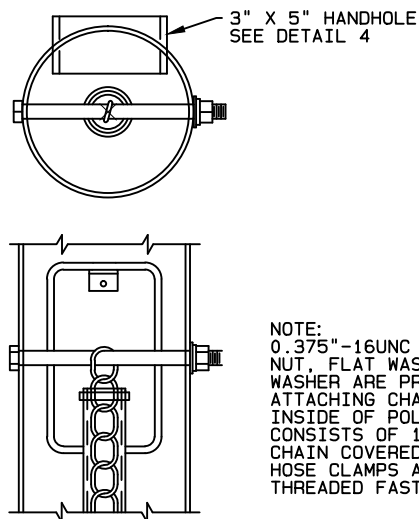
## MAXIMUM LOAD CHART AND DESIGN CRITERIA



DETAIL 1	POLE TOP
----------	----------

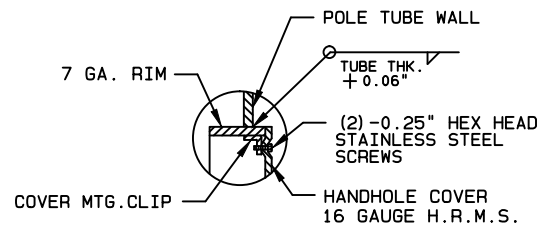


DETAIL 2	WIRE WAYS
----------	-----------

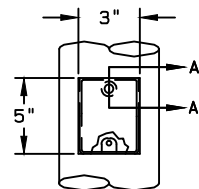


NOTE:  
0.375"-16UNC CAP SCREW W/HEX  
NUT, FLAT WASHER, AND LOCK  
WASHER ARE PROVIDED FOR  
ATTACHING CHAIN DAMPER TO  
INSIDE OF POLE SHAFT. DAMPER  
CONSISTS OF 10'-6" LENGTH OF  
CHAIN COVERED WITH BLACK HOSE.  
HOSE CLAMPS ARE PROVIDED. ALL  
THREADED FASTENERS ARE PLATED.

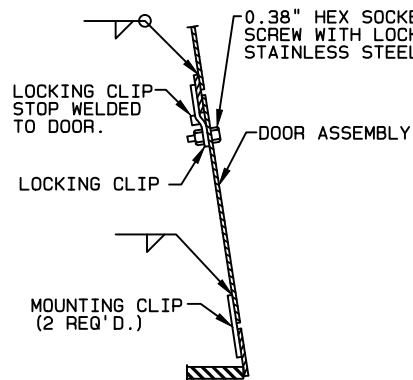
DETAIL 3	INTERNAL CHAIN DAMPER
----------	-----------------------



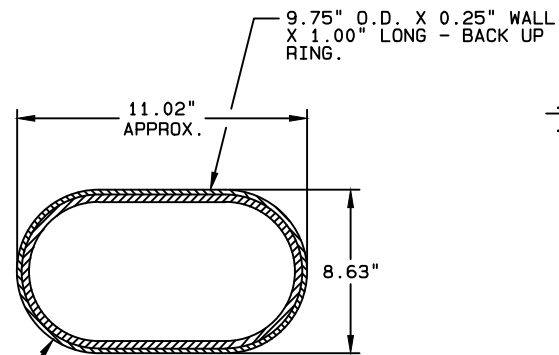
SECTION A-A



DETAIL 4	HANDHOLE
----------	----------



SECTION A-A



SECTION B-B

NOTE:  
CLEAR DOOR OPENING APPROX. 8.19" X 11.47" X 10".  
FLARE BASE IS 8.63" WIDE X 0.1875" WALL  
FRONT AND DOOR SHALL BE 7GA.  
DOOR REINFORCEMENT AND FRAME SHALL BE HRMS.  
BASE PLATE - SEE MATERIAL DATA.

GALVANIZING  
VENTING AND  
DRAINAGE SLOTS.  
(TYPICAL 4 PLACES)

3" X 11" SLOT

1.13" X 1.75" SLOTS  
(6 REQ'D)

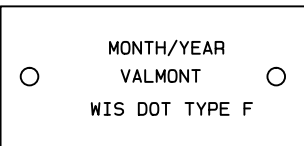
BOTTOM PLAN VIEW

METRO BASE

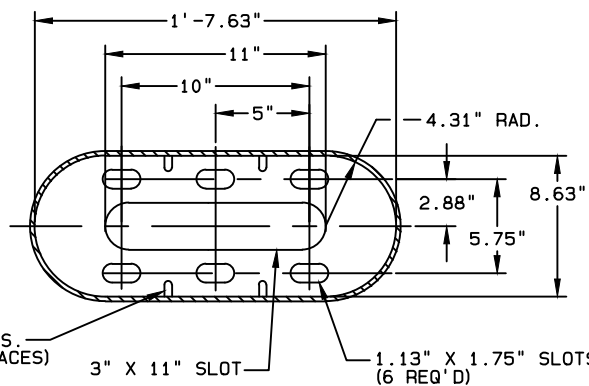
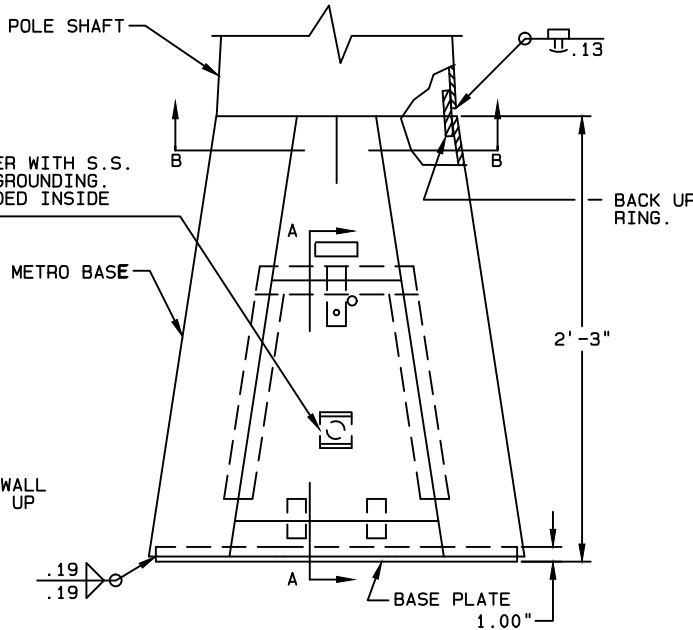
ALTHOUGH RARE, VIBRATIONS SEVERE ENOUGH TO CAUSE DAMAGE CAN OCCASIONALLY OCCUR IN STRUCTURES OF ALL TYPES. BECAUSE THEY ARE INFLUENCED BY MANY INTERACTING VARIABLES, VIBRATIONS ARE GENERALLY UNPREDICTABLE. THE USER'S MAINTENANCE PROGRAM SHOULD INCLUDE OBSERVATION FOR EXCESSIVE VIBRATION AND EXAMINATION FOR ANY STRUCTURAL DAMAGE OR BOLT LOOSENING. THE VALMONT WARRANTY SPECIFICALLY EXCLUDES FATIGUE FAILURE OR SIMILAR PHENOMENA RESULTING FROM INDUCED VIBRATION, HARMONIC OSCILLATION OR RESONANCE ASSOCIATED WITH MOVEMENT OF AIR CURRENTS AROUND THE PRODUCT.

## VIBRATION DISCLAIMER

ALL LETTERING TO BE 0.125" IN HEIGHT  
3.25 X 1.5 24 GAUGE ALLUMINUM TAG,  
RIVETED TO BASE.



DETAIL 5	I.D. TAG
----------	----------



BOTTOM PLAN VIEW

A	NKL 08/04/16	NKL 08/04/16	OVALIZED SECTION WAS 9'-9.50"/REV RAD INDEX
	BDS 10/31/05	REM 11/02/05	— — — — —
REV	DRAWN BY-DATE	CHECK BY-DATE	DESCRIPTION

TITLE	STATE OF WISCONSIN LIGHTING STRUCTURES POLE TYPE F
-------	--

VALMONT INDUSTRIES, INC. RESERVES  
THE RIGHT TO INSTALL VARIOUS,  
ENGINEER APPROVED, MATERIAL HANGING  
ACCOMMODATIONS TO FACILITATE THE  
MANUFACTURING PROCESS.

**valmont**   
Valley, NE 68064  
(402) 359-2201

PAGE NUMBER: 1 OF 1	
DRAWING NUMBER	REV
DB00746	A