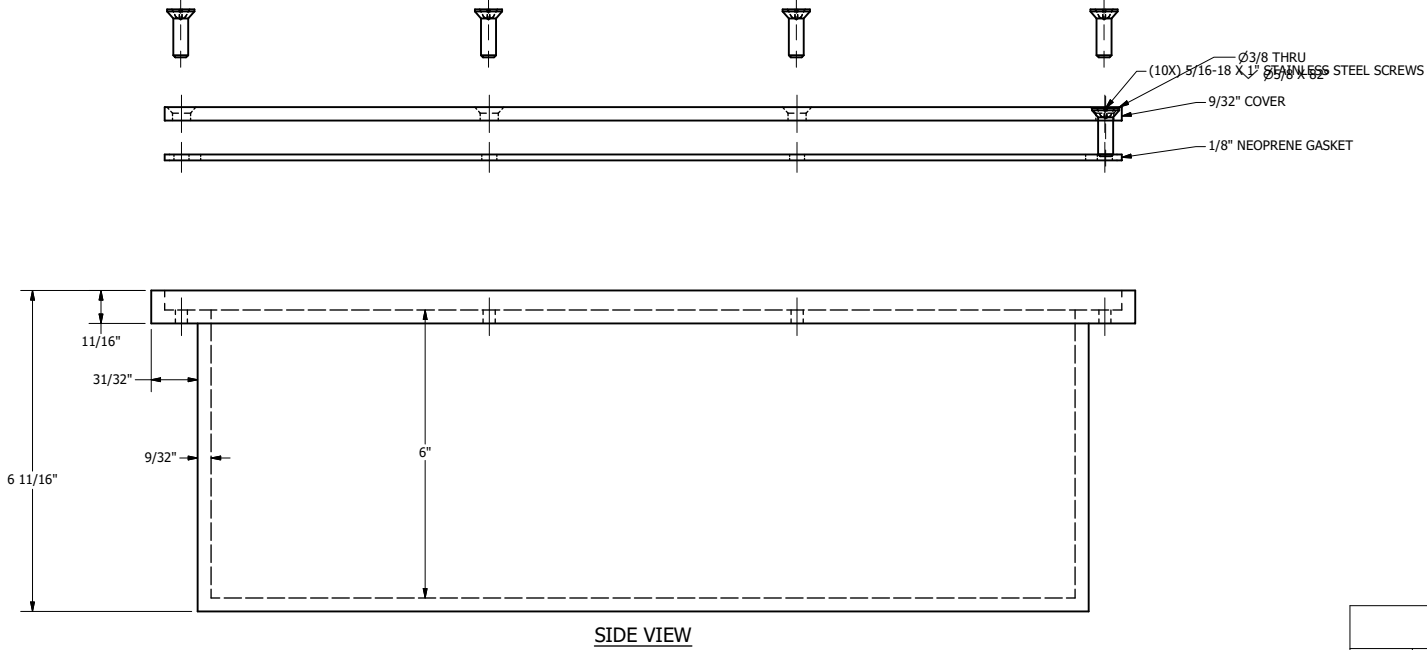
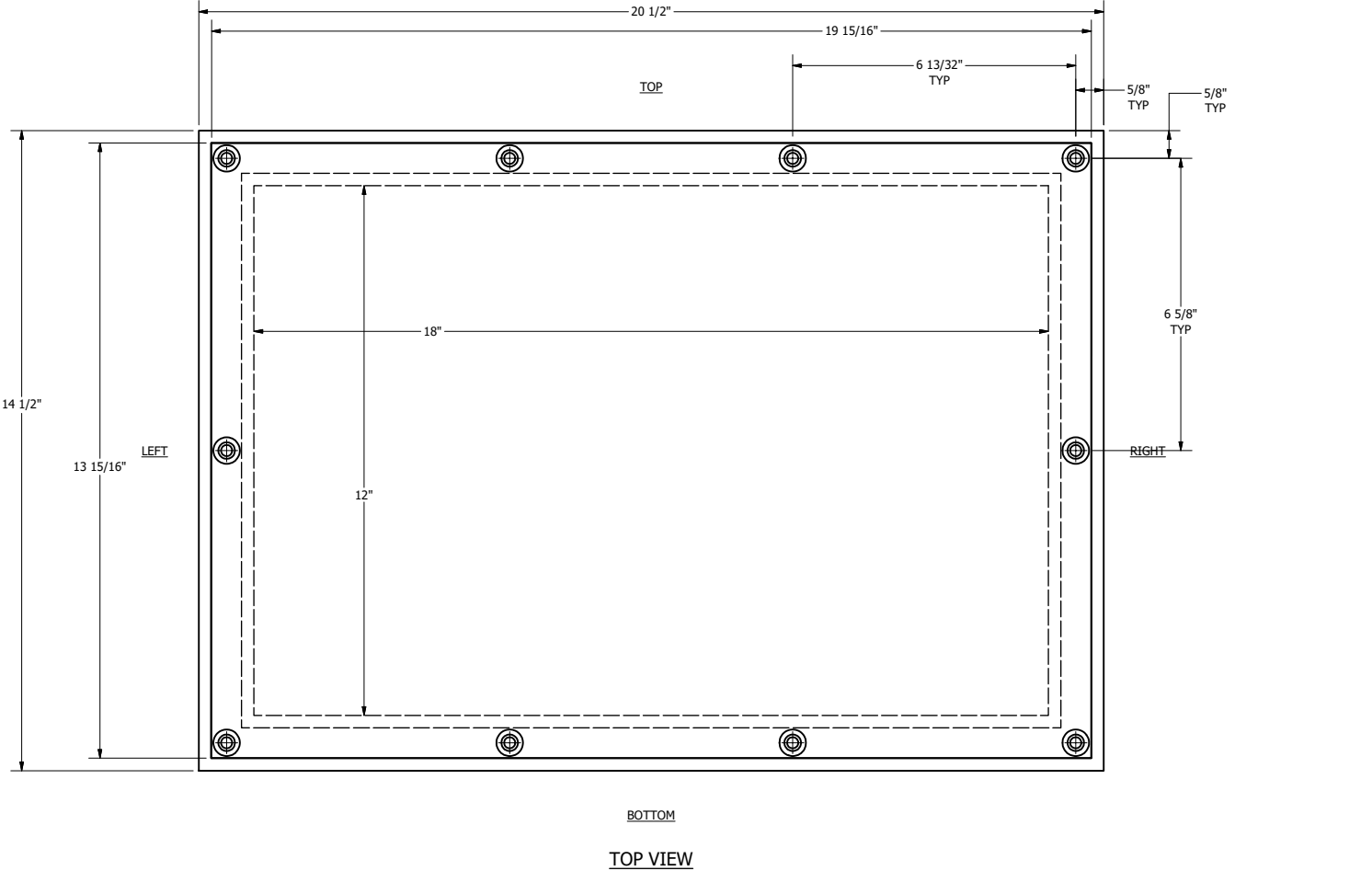
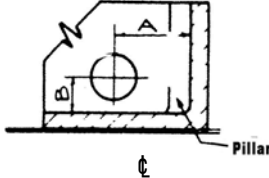


Junction Boxes 18x12x6-Inch - 653.0226



DRILL &/OR TAP HOLE TEMPLATE

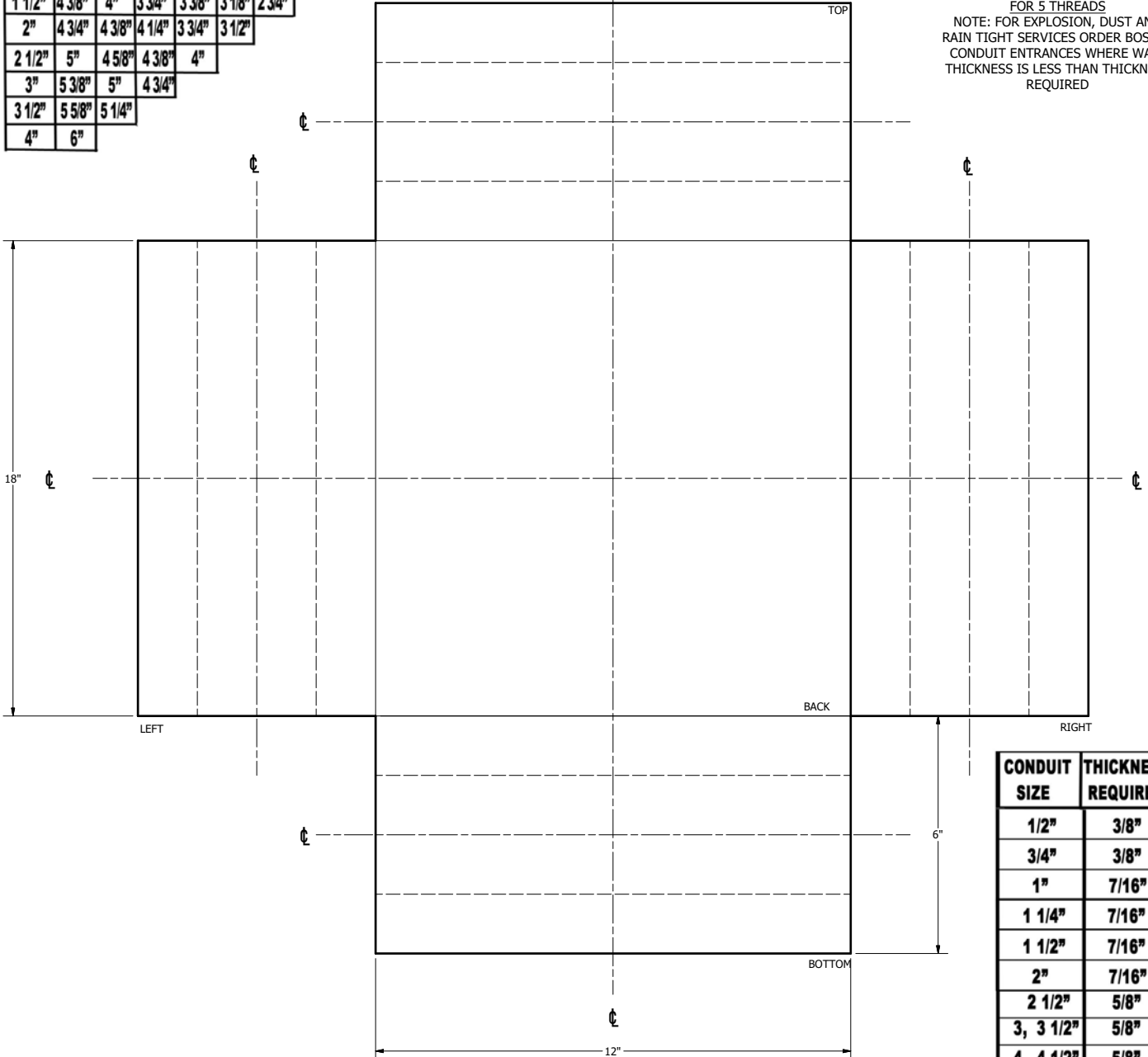


Recommended Conduit Locations for Lock Nut and Bushing Clearance

Conduit Size	1/2"	3/4"	1"	1 1/4"	1 1/2"	2"	2 1/2"	3"	3 1/2"	4"
From Wall A	1 1/4"	1 3/8"	1 5/8"	1 7/8"	2"	2 3/8"	2 5/8"	3"	3 1/4"	3 3/4"
Up from Bot "B"	1"	1 1/4"	1 1/8"	1 3/8"	1 1/2"	1 3/4"	2 1/8"	2 1/2"	2 7/8"	3 1/4"

REQUIRED METAL THICKNESS
FOR 5 THREADS
NOTE: FOR EXPLOSION, DUST AND
RAIN TIGHT SERVICES ORDER BOSS'D
CONDUIT ENTRANCES WHERE WALL
THICKNESS IS LESS THAN THICKNESS
REQUIRED

Conduit Size	MINIMUM SPACE BETWEEN CENTERS OF CONDUITS									
	4"	3 1/2"	3"	2 1/2"	2"	1 1/2"	1 1/4"	1"	3/4"	1/2"
1/2"	3 5/8"	3 1/4"	3"	2 5/8"	2 3/8"	2"	1 7/8"	1 5/8"	1 3/8"	1/4"
3/4"	3 3/4"	3 3/8"	3 1/8"	2 3/4"	2 1/2"	2 1/8"	2"	1 3/4"	1 1/2"	
1"	4"	3 5/8"	3 3/8"	3"	2 3/4"	2 3/8"	2 1/4"	2"		
1 1/4"	4 1/4"	3 7/8"	3 5/8"	3 1/4"	3"	2 5/8"	2 1/2"			
1 1/2"	4 3/8"	4"	3 3/4"	3 3/8"	3 1/8"	2 3/4"				
2"	4 3/4"	4 3/8"	4 1/4"	3 3/4"	3 1/2"					
2 1/2"	5"	4 5/8"	4 3/8"	4"						
3"	5 3/8"	5"	4 3/4"							
3 1/2"	5 5/8"	5 1/4"								
4"	6"									



CONDUIT SIZE	THICKNESS REQUIRED
1/2"	3/8"
3/4"	3/8"
1"	7/16"
1 1/4"	7/16"
1 1/2"	7/16"
2"	7/16"
2 1/2"	5/8"
3, 3 1/2"	5/8"
4, 4 1/2"	5/8"
5, 6"	5/8"

NOTES:
1. APPROX. TOTAL MASS: 71 lbmass
2. QUANTITY OF SCREWS: 10

REVISIONS				TOLERANCES (EXCEPT AS NOTED)		FINISHES TO BE		HOPE ELECTRICAL PRODUCTS CO., INC. WEST CALDWELL, NEW JERSEY					
NO.	DESCRIPTION	DATE	BY	DECIMAL	FRACTIONAL	✓ 125	ANGULAR	H7000 TYPE FLANGED RECESSED COVER BOX 18" x 12" x 6"					
				± 0.010	± 1/32		± 1°						
				MATERIAL:				DRAWN BY:		CHKD BY:	SCALE:	PART	REV.:
				ENCLOSURE: CAST IRON				MD			NTS	NUMBER:	
				COVER: STD. GALV. CAST IRON				DATE:		PAGE:		H70-181206	
								12/21/2020					



HOPE Electrical
Products Co., Inc.

HOPE Electrical Products Co., Inc.

3 Fairfield Crescent
West Caldwell, NJ 07006

Phone: 973.882.7400

Fax: 973.244.92926

Email: sales@hopeelectrical.com

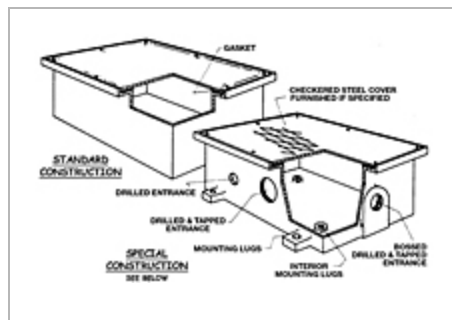
Website: www.hopeelectricalproducts.com

[All Categories](#) > [H7000 Type - Flanged Recessed Cover Box](#) > Item # H70-181206

Item # H70-181206, H7000 Type - Flanged Recessed Cover Box

Flush Mounting in Concrete or Surface Mounting NEMA 4 - NEMA 3R - Complies with U/L Std. 50 Cast Iron - Hot Dipped Galvanized Third Party Certification: UL File E 189027 Standard Construction: 1. Box and plain cover of cast iron. 2. Stainless steel machine screws. 3. Neoprene gasket. Available Extras: 1. Drilling only. Drilling and tapping. 2. Bosses for five threads. Special gaskets. 3. Mounting lugs. 4. Plain brass or checkered bronze covers. 5. Interior mounting buttons tapped blind. 6. Galvanized steel checkered

[+ more](#)



Specifications

Type	H7000
Construction	cast iron
Mounting	Flush Surface

Inside Length	18 in.
Inside Width	12 in.
Inside Depth	6 in.
Approx. Weight	84 lbs
Approx. Wall Thickness	9/32 in.
Holes can be boss, drilled and tapped	Holes can be boss, drilled and tapped by Hope Electrical Products at additional cost. Please mark up the hole locations on the attached drilling template and submit with your order to request for quote.
Stock Note	If you don't see a box size listed that you need, please inquire - we may have it. This list does not represent all of our boxes.
Options	Galvanized checkered steel covers