



Wisconsin Department of Transportation

# Quantities 2 Plans User Guide

Quantities to Plans User Guide - February 26, 2025



WisDOT - DOT Q2P Support Committee  
February 26, 2025

## Trademarks

AASHTOWare, AASHTOWare Project, AASHTOWare Project Estimator and AASHTOWare Project Preconstruction are registered trademarks of the American Association of State Highway and Transportation Officials (AASHTO).

Adobe and Acrobat are either registered trademarks or trademarks of Adobe Systems Incorporated in the United States and/or other countries.

Autodesk, AutoCAD, and Civil 3D are registered trademarks or trademarks of Autodesk, Inc., and/or its subsidiaries and/or affiliates, in the USA and/or other countries.

Bid Express is a registered trademark of Info Tech, Inc.

Estimator is a trademark of Info Tech, Inc., and represents a proprietary product of Info Tech, Inc.

Microsoft; Excel; Excel launch icon; PowerPoint; PowerPoint launch icon; Visual Studio; Windows; Windows; and Windows 10 are either registered trademarks or trademarks of Microsoft Corporation in the United States and/or other countries.

Quantities 2 Plans, Q2P, and the Quantities 2 Plans logo are unregistered trademarks of the Wisconsin Department of Transportation.

TechSmith and Snagit are registered trademarks of TechSmith Corporation in the United States and/or other countries.

All other brands and product names are the trademarks of their respective owners.

## Disclaimer

WisDOT provides Quantities 2 Plans and supporting documentation on an “as is” basis for WisDOT and external staff. The use of any of these files for work which is under contract with WisDOT does not relieve the contractor (consultant) from any obligation assumed by the contract, or from complete and proper fulfillment of the terms of the contract, nor does it entitle the contractor (consultant) to compensation for damages or loss which could be attributed to such use.

## Notice

This manual may be freely copied or distributed to Q2P users for the purpose of providing the Wisconsin Department of Transportation and Wisconsin customers a consistent guide to using Quantities 2 Plans to meet WisDOT's design and drafting standards. Screen shots are used with permission from Microsoft.

## Software Versions

The software products referred to in this publication are furnished under a license and may only be used in accordance with the terms of such license. This document is intended for use with the following software versions:

WisDOT Q2P Excel Add-in Version 2.x  
AASHTOWare Project Estimator 2.14a-1  
AASHTOWare Project Preconstruction  
Adobe Acrobat Pro DC  
Microsoft Office Excel  
Microsoft Office PowerPoint  
Microsoft Office Word

## Copyright

Copyright © 2019 Wisconsin Department of Transportation. All Rights Reserved.

Wisconsin Department of Transportation  
Hill Farms State Office Building  
4822 Madison Yards Way  
Madison, WI 53705

## TABLE OF CONTENTS

TABLE OF CONTENTS .....	3
INTRODUCTION .....	8
USING QUANTITIES 2 PLANS.....	9
1. Before You Get Started.....	9
2. Begin a New Project – Entering Project Information.....	10
3. Bid Item Data .....	14
3.1 Published Bid Items .....	14
3.2 Project Bid Items.....	15
3.3 Updating and Reconciling the Standard Bid Item List.....	16
4. Contingency Amounts .....	19
5. Adding Bid Items and MQ Sheets .....	20
6. Adding/Deleting Categories.....	22
6.1 Add Categories.....	22
6.2 Delete Categories from Project .....	24
6.3 Delete Categories from MQ Sheets .....	25
7. Items with Supplemental Descriptions.....	27
7.1 Add a New Item to the Project Bid Items List Using the “Project Bid Items” Dialog Box .....	28
7.2 Editing of Supplemental Descriptions After Creation .....	31
8. Combining Multiple Bid Items into One Summary Sheet .....	33
8.1 Before You Combine Items .....	33
8.2 Inserting a Bid Item into an Existing MQ Sheet .....	33
8.3 Renaming an MQ Sheet or Summary Sheet .....	35
8.4 Bid Item Used on Multiple Plan Sheets .....	37
9. Deleting Bid Items and MQ sheets .....	38
10. Entering and Computing Quantities .....	40
10.1 Important Formatting Rules .....	40
10.1.1 “Total 00X0” Cell.....	40
10.1.2 Multiple Categories.....	41
10.2 Rounding.....	42
10.3 Recording Computations .....	43
11. Establishing Unit Prices.....	44

11.1	Exporting from Q2P into AASHTOWare Project Estimator™	45
11.2	Important Estimator Information	47
11.3	Importing from AASHTOWare Project Estimator™ into Q2P	48
11.4	Copying Unit Prices	49
12.	Viewing “80/20 Rule” Items for Documenting Unit Price Sources	50
12.1	Use of Excel’s Sorting Function	50
12.2	Using a Number Filter	51
12.3	Using Conditional Formatting	53
13.	Creating the Miscellaneous Quantity Plan Sheets	55
13.1	Setting up the Power Point Slide Template	55
13.2	Copying Data onto PowerPoint Slide	57
13.3	Printing the Miscellaneous Quantity Sheets	60
14.	Print Project Cost Report	61
15.	Creating the Upload File for AASHTOWare Project Preconstruction™	64
16.	Importing the File into AASHTOWare Project Preconstruction™	66
APPENDICES		67
Appendix A. Troubleshooting		67
A-1	“#####” Displays in a Cell	67
A-2	“#REF !” Appears in the Quantity Total on the main “Bid Items” Worksheet	68
A-3	Q2P Ribbon Fails to Load	68
A-4	Small Triangles Appear in Cells	68
A-5	“Tab” Key Does Not Work in Newly Created MQ Sheet	69
A-6	Renaming MQ Sheet Via Right-Click Inhibits Q2P Functionality	69
A-7	“This worksheet is not a valid Misc Qty sheet,...” Error Message	70
Appendix B. Miscellaneous Helpful Information		71
B-1	Getting Help	71
B-2	Quick Navigation	71
B-3	Excel® Tips and Tricks	73
B-4	Complex Formulas	74
B-5	Making Notes in Q2P	75
B-6	Finding Contingency Let Dates in FIIPS	75
B-7	Migrating Older Q2P files to version 3.2.1.0 and later	76

Appendix C. Confidentiality of Engineer's Estimate and Pre-award Bid Data .....	78
---	----

## TABLE OF FIGURES

Figure 1.1	Windows "Apps & Features" menu .....	9
Figure 1.2	Window with "Repair Q2P Excel Add-In" tool. ....	9
Figure 2.1	Q2P-specific commands found under the Q2P tab.....	10
Figure 2.2	The "New" button under the Project section of the Q2P ribbon. ....	10
Figure 2.3	Project Setup window.....	11
Figure 2.4	The "Category Setup" button under the <i>Project</i> section of the Q2P ribbon. ....	11
Figure 2.5	Category Setup window.....	11
Figure 2.6	FIIPS menu navigation. ....	12
Figure 2.7	FIIPS project information.....	12
Figure 2.8	Categories, Federal Work Types and Funding entry in Q2P. ....	13
Figure 3.1	"Published Bid Items" command. ....	14
Figure 3.2	List of currently published bid items from AWP. ....	14
Figure 3.3	"Project Bid Items" command. ....	15
Figure 3.4	List of currently Published Bid Items from AWP. ....	15
Figure 3.5	Reconciliation Tool in "Project Bid Items" dialog box.....	16
Figure 3.6	Reconciliation Tool in "Project Bid Items" dialog box.....	17
Figure 3.7	"Change" section of the Reconciliation Tool with highlighted differences selected. ....	18
Figure 5.1	"Create MQ Sheet" command. ....	20
Figure 5.2	"Create MQ Sheet..." dialog box.....	20
Figure 5.3	"Order MQ Sheets" command.....	21
Figure 6.1	Adding a category to an existing MQ sheet.....	22
Figure 6.2	"Rebuilding reference in MQ Sheet" dialog box after references have been built. ....	23
Figure 6.3	Updated bid item quantities after adding another category.....	23
Figure 6.4	Category Setup window.....	24
Figure 6.5	Category 0030 is no longer visible in the list of categories.....	24
Figure 6.6	Deleting a category from an existing MQ sheet. ....	25
Figure 6.7	Updated bid item quantities after deleting unneeded category. ....	26
Figure 7.1	"Project Bid Items" dialog box. ....	28
Figure 7.2	Examples of special items. (SPV items included, but not shown).....	29
Figure 7.3	Sample list of supplemental descriptions after creating MQ sheets. ....	30
Figure 7.4	Edits made via "Project Bid Items" dialog box.....	31
Figure 8.1	"Rebuild References" and "Update Bid Item(s)" commands.....	33
Figure 8.2	Right-Click menu.....	33
Figure 8.3	Go to MQ sheet dialog box. (Will display multiple sheets if the item is found in multiple sheets.)	33
Figure 8.4	"Insert Bid Item(s)" command. ....	34
Figure 8.5	"Insert a Bid Item" dialog box.....	34
Figure 8.6	Summary sheet created by inserting additional bid items and which needs to be renamed. ....	35

Figure 8.7	“Rename MQ Sheet” command. ....	35
Figure 8.8	“Rename MQ Sheet” command. ....	35
Figure 8.9	Renamed Summary sheet. ....	36
Figure 8.10	Example of formatted table to be displayed on MQ Plan Sheets. ....	36
Figure 8.11	Existing summary sheet with bid items 652.0225 and 652.0235. ....	37
Figure 8.12	Newly generated summary sheet with bid items 652.0225 and 652.0235 & asterisk designation. ....	37
Figure 9.1	“Remove Bid Item” command. ....	38
Figure 9.2	“Remove Bid Item” dialog box. ....	38
Figure 9.3	Summary sheet with bid item 646.6020 removed. ....	39
Figure 10.1	Source of bid item category sum <b>Name</b> . ....	40
Figure 10.2	“Rebuild References” and “Update Bid Item(s)” commands. ....	40
Figure 10.3	“Project Total” on a sheet with multiple categories. ....	41
Figure 10.4	Example of how ROUNDUP makes formula results add up correctly on paper. ....	42
Figure 10.5	“Round Up Quantity” command. ....	42
Figure 10.6	Typical computations. ....	43
Figure 11.1	Importing Q2P into Estimator help. ....	45
Figure 11.2	“Export as Estimator XML file” dialog box. ....	45
Figure 11.3	“Export as Estimator XML file” dialog box after XML creation. ....	45
Figure 11.4	Item with supplemental description. ....	47
Figure 11.5	“From Estimator XML” command. ....	48
Figure 11.6	“Import Estimator XML file” dialog box. ....	48
Figure 11.7	File path of selected XML file (typically in project folder). ....	48
Figure 11.8	“From Estimator XML” command. ....	48
Figure 11.9	“Paste Values” command. ....	49
Figure 11.10	Estimator prices successfully copied to “Unit Price” column. ....	49
Figure 12.1	“Unprotect Sheet” command. ....	51
Figure 12.2	Filter drop-down selected in “Cost” cell. ....	51
Figure 12.3	Top 10 AutoFilter changed to “Top 20 Percent.” ....	51
Figure 12.4	View of “Bid Items” worksheet data that has been filtered by “Top 20 Percent.” ....	52
Figure 12.5	Using the selection sum feature of Excel. ....	52
Figure 12.6	Filter drop-down, used to clear the Number Filter. ....	52
Figure 12.7	“Unprotect Sheet” command. ....	53
Figure 12.8	Conditional Formatting Excel command. ....	53
Figure 12.9	Top 10% Conditional Formatting dialog box. ....	53
Figure 12.10	Bid items with the higher Cost items highlighted as they are included in the top 20%. ....	54
Figure 12.11	Bid items with item 460.6223 Cost no longer highlighted as the unit price was revised down. ....	54
Figure 12.12	Conditional Formatting Rules Manager which allows deletion of set rules. ....	54
Figure 13.1	PowerPoint sheet templates found on Q2P website. ....	55
Figure 13.2	Normal View. ....	55
Figure 13.3	Slide Master View. ....	56
Figure 13.4	PowerPoint New Slide. ....	56
Figure 13.5	Paste Special in PowerPoint. ....	57

Figure 13.6	Right-Click Menu.....	58
Figure 13.7	Format Object dialog box. ....	58
Figure 13.8	Drawing lines in PowerPoint. ....	59
Figure 13.9	Use “Edit Links to Files” to review links between Q2P and PowerPoint.....	59
Figure 13.10	Accessing printer properties. ....	60
Figure 13.11	Basic Print Settings for Adobe PDF. ....	60
Figure 13.12	Layout changed to Landscape.....	60
Figure 14.1	“Generate Cost Report” command.....	61
Figure 14.2	Generate Cost Report window after report generation is complete.....	61
Figure 14.3	Q2P Cost Report. ....	62
Figure 14.4	MQ sheet with unused category left in place. ....	63
Figure 15.1	“To AWP Precon XML” command.....	64
Figure 15.2	“Export as AWP XML file” dialog box.....	64
Figure 15.3	“Export as AWP Precon XML file” dialog box after XML creation.....	64
Figure 15.4	Sample XXXX-XX-XXToPrecon.xml generated by Q2P.....	65
Figure 16.1	Navigation to “Importing an Estimate into Preconstruction.” .....	66
Figure A-1.1	Insufficient column width. ....	67
Figure A-1.2	Resize column width cursor. ....	67
Figure A-1.3	Right-click menu for accessing the “Column Width...” command. ....	67
Figure A-2.4	“#REF!” error on “Bid Items” worksheet after deleting category from MQ sheet. ....	68
Figure A-4.5	Excel error checking displaying small triangles in cells – will also display in PowerPoint.....	68
Figure A-4.6	Disabling Excel error checking. ....	69
Figure B-2.1	“Go to “Bid Items”” command.....	70
Figure B-2.2	“Return to “Bid Items”” command from the right-click menu. ....	70
Figure B-2.3	“Go to MQ sheet” dialog from the right-click menu.....	71
Figure B-2.4	Right-click menu from bottom left arrows displaying all sheets. ....	72
Figure B-4.5	Excerpt from tables worksheet. (Lookup array highlighted) .....	73
Figure B-5.6	Making notes in Q2P.....	74

## INTRODUCTION

### Quantities 2 Plans

Quantities 2 Plans (Q2P) was developed by the Wisconsin Department of Transportation (WisDOT) to create a single repository of bid item data for maintaining a live link between the engineer's estimate, quantity calculations, and the construction plan miscellaneous quantity (MQ) sheets. Q2P is a Microsoft® Excel® Add-in based application that contains all the current WisDOT bid items with automatic updates capability (from the WisDOT AASHTOWare Project Database).

MQ tables are created in Q2P and are able to be linked into Microsoft® PowerPoint® or AutoCAD® Civil 3D for MQ plan sheet creation. The estimate cost data is updated by design staff from scoping phase through PS&E, at which point the estimate is imported into AASHTOWare Project Preconstruction® (AWP Preconstruction). When a project estimate is submitted to Central Office at PS&E phase, Q2P is no longer considered the official engineer's estimate. At this stage, region policy dictates whether Q2P is kept current with the changed data in AWP Preconstruction (from PS&E review revisions, addenda, etc.)

The WisDOT Bureau of Information Technology Services (BITS) and WisDOT Q2P Support Committee maintain Q2P (the Excel Add-in and the worksheet templates used by the add-in), and provide support via the [DOTQ2P@dot.wi.gov](mailto:DOTQ2P@dot.wi.gov) (DOT Q2P) email address. The WisDOT Estimating Group is an additional resource that provides best practices and information related to construction cost estimating.

Visit <https://wisconsin.dot.gov/Pages/doing-bus/eng-consultants/cnslt-rsrcs/tools/estimating/est-q2p.aspx> to subscribe to the WisDOT Q2P email list for Q2P news or to find the name of power users in your region for support. Notifications for updates, or tips & tricks, etc. are shared via this distribution list.

### Confidentiality Notice

Engineering estimates are always treated as **confidential before, during and after the letting** by WisDOT. Engineer estimate data should not be released outside of WisDOT with the exception of the Federal Highway Administration and engineering consultants working directly for WisDOT. The State Transportation Agency (i.e. WisDOT) policy is further explained in [Appendix C](#).

When sharing information with the public, or when a general estimate is required in a project report (e.g. the Work Zone Transportation Management Plan), obtain the project estimate range from region planning section's Public Report.

## USING QUANTITIES 2 PLANS

### 1. Before You Get Started

Quantities 2 Plans (Q2P) requires system files to be installed.

WisDOT Staff: Will need to contact the DOT IT Service Desk for installation of the necessary system files.

External Staff: Will need to download the installer from the [Q2P website](#).



*Q2P updates are pushed to WisDOT staff's workstations by IT. Consultants must download Q2P updates posted on the [Q2P website](#).*

As part of the installation process, each user will need to go through a few additional steps to finish the installation of Q2P on your computer for your logon account. If Q2P ever needs to be re-installed, if you get a new computer, or if another user needs to login and use Q2P on your computer, the following steps need to be performed prior to the first use of Q2P.

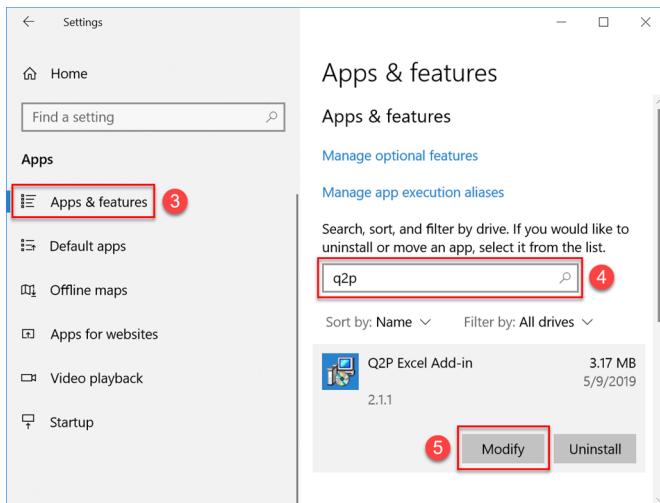


Figure 1.1 Windows "Apps & Features" menu.

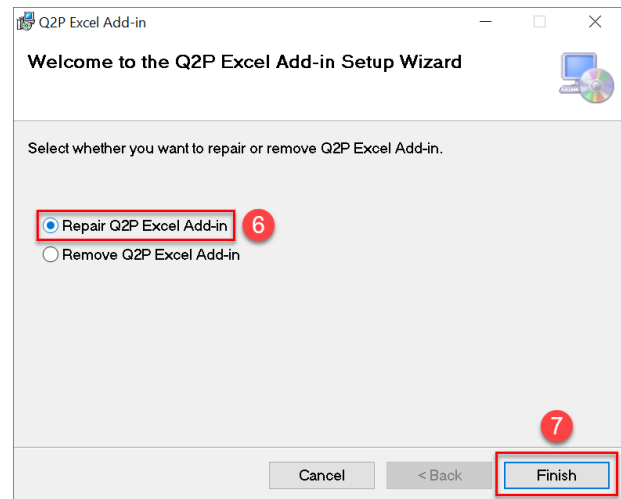


Figure 1.2 Window with "Repair Q2P Excel Add-In" tool.

1. Go to your Start Menu and select **"Settings"** (Gear shaped icon)
2. Select **"Apps"**.
3. In the next window that appears, make sure **"Apps & Features"** is selected (Figure 1.1).
4. In the search bar, type in **"q2p"**.
5. You'll see an app titled Q2P Excel Add-in with two buttons available to press. Press the **"Modify"** button.
6. A window should pop up with two radio buttons (Figure 1.2). Select the **"Repair Q2P Excel Add-in"** radio button and click the **"Finish"** button.
7. After Q2P is repaired, you can close these windows and open up excel with a new workbook. If everything worked, you should see a new Excel ribbon along the top titled **"Q2P"**.

If you have any issues getting this far, please feel free to contact [DOTQ2P@dot.wi.gov](mailto:DOTQ2P@dot.wi.gov)

Q2P is currently supported under Microsoft® Office 2012 and up with Windows 7 and up and must have the .NET Framework 4.6 and up installed.

## 2. Begin a New Project – Entering Project Information

1. Open a new Excel workbook and navigate to the Q2P ribbon tab (Figure 2.1). This tab houses all of Q2P's specific commands and functionality.



A Q2P workbook can only handle a single project ID. If you are working on multiple project IDs that will be LET together as one proposal and plan set, then you will need multiple Q2P workbooks to be able to import each project IDs estimate into AWP separately and one workbook to combine the quantity tables together for the projects' MQ sheets.

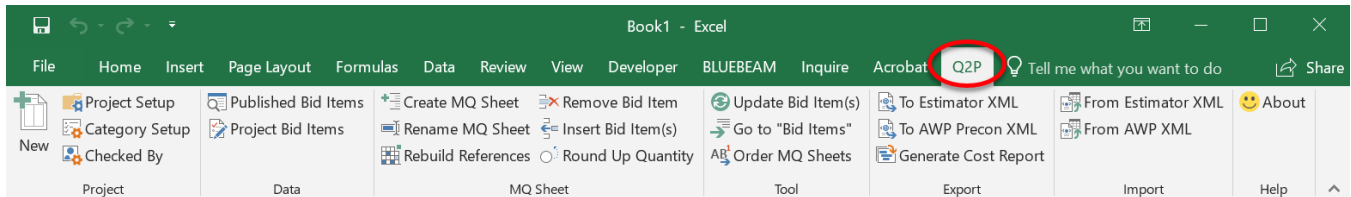


Figure 2.1 Q2P-specific commands found under the Q2P tab.

2. An internet connection is required for this step, and the project setup window shown below, may take 10 seconds or more to display depending on your internet connection. Q2P will contact WisDOT's AWP server and copy the list of published Bid Items to this Q2P workbook. Select **New** (Figure 2.2) from the *Project* section of the Q2P ribbon to initialize the project setup window (Figure 2.3) and enter all project information. The information in Q2P must match FIIPS information.



*If the project information does not match FIIPS exactly, errors will result when trying to export and upload to AWP Preconstruction.*



The one exception to the rule above is if the project title uses the ampersand (&). If this is the case, the XML export from Q2P will not successfully load into AWP. As a workaround, remove the "&" or replace it with "and" in the Q2P export XML then edit it back in once uploaded into AWP.

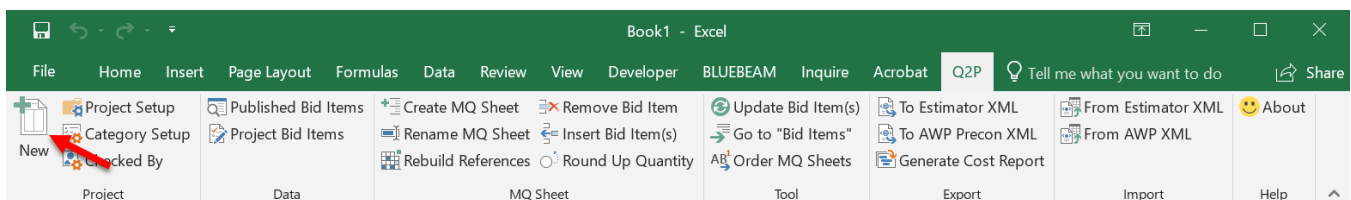
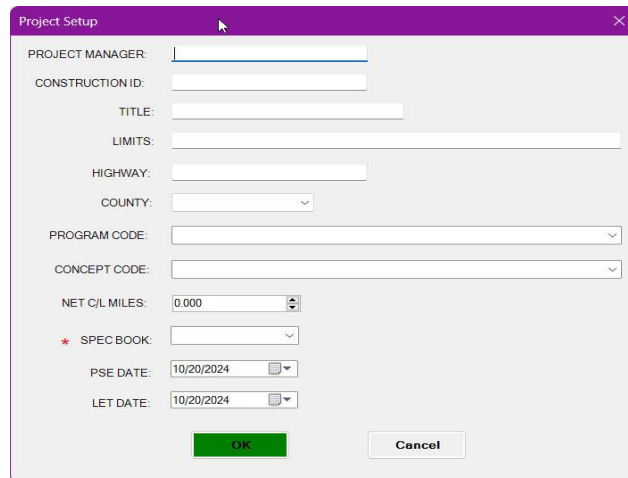


Figure 2.2 The "New" button under the Project section of the Q2P ribbon.

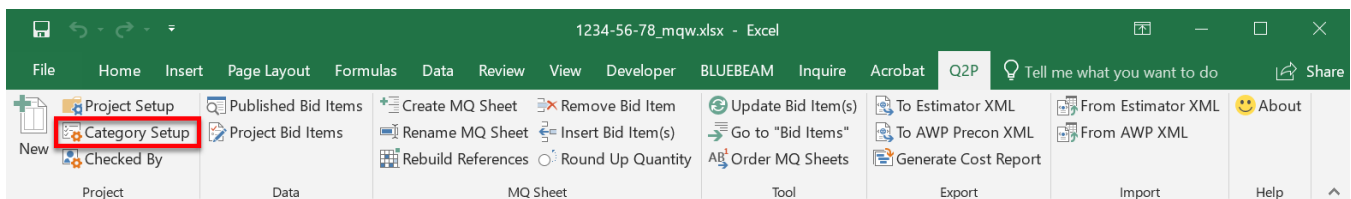
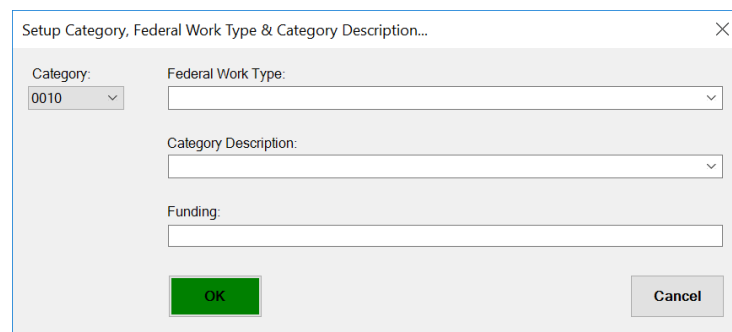


The Project Setup window is a dialog box with a purple title bar. It contains the following fields and controls:

- PROJECT MANAGER: Text input field
- CONSTRUCTION ID: Text input field
- TITLE: Text input field
- LIMITS: Text input field
- HIGHWAY: Text input field
- COUNTY: Dropdown menu
- PROGRAM CODE: Dropdown menu
- CONCEPT CODE: Dropdown menu
- NET C/L MILES: Text input field with a spinner control
- SPEC BOOK: Dropdown menu (preceded by a red asterisk)
- PSE DATE: Date picker (set to 10/20/2024)
- LET DATE: Date picker (set to 10/20/2024)
- OK button (green)
- Cancel button (grey)

Figure 2.3 Project Setup window.

3. Select “OK” when finished to save the workbook. There will be a slight delay after hitting “OK” as Q2P will contact the AWP server and copy the bid item data for the chosen spec. book year to your machine. When saving, use the **00000000\_mqw.xlsx** naming convention, where 00000000 is the associated construction ID. Save the Q2P workbook in your project estimate folder, or where your region’s policy dictates. A date or other version related text can be added to the file name (e.g., 12345678\_mqw-30REVIEW.xlsx).
4. Select **Category Setup** (Figure 2.4) from the *Project* section of the Q2P ribbon to initialize the category setup window (Figure 2.3) and enter all category information. Select OK when finished. This process must be repeated for each new category.

Figure 2.4 The “Category Setup” button under the *Project* section of the Q2P ribbon.


The Category Setup window is a dialog box with a blue title bar. It contains the following fields and controls:

- Category: Dropdown menu (set to 0010)
- Federal Work Type: Dropdown menu
- Category Description: Dropdown menu
- Funding: Text input field
- OK button (green)
- Cancel button (grey)

Figure 2.5 Category Setup window.

✱ *If category information must be updated, this is possible by selecting the existing category from the Category Drop-down and entering the new information as needed to overwrite the existing category.*

*This updating method also works for deleting unused categories, where you simply need to select blank options to clear the existing category. (See section [6.2 Delete Categories from Project](#) for more information.)*

This information can all be obtained from FIIPS through **Project > Funding...** and clicking **Category # 00n0** for more detailed information (See Figures 2.6 and 2.7). External users should contact the DOT Project Manager to obtain this information. The information in Q2P must match FIIPS information **EXACTLY**.

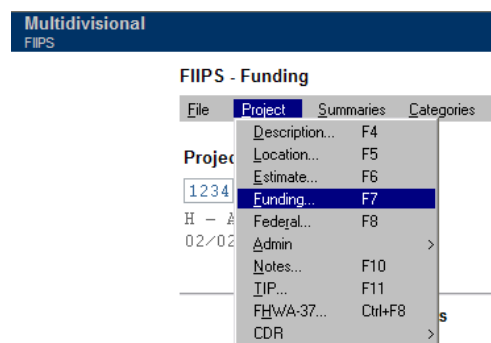


Figure 2.6 FIIPS menu navigation.

w/ Del add-on	w/o Del add-on	Type	Limit	Priority	% w/in priority	State app.	Fed app/ Demo ID	Ent	Alloc	Emk
<b>Category # 0010</b>		<b>Category estimate</b>								
<b>Fed Imp Ty 05</b>		<b>Category desc: Roadway Construction</b>								
\$2,348,314.47	\$2,854,794.33	<a href="#">FEDERAL</a>	Unlimited	1	80.000%	383	I20E	N	Y	N
\$587,078.62	\$570,958.87	<a href="#">STATE</a>	Unlimited	1	20.000%	363		N	Y	
\$2,935,393.09	\$2,854,794.33									
<b>Category # 0020</b>		<b>Category estimate</b>								
<b>Fed Imp Ty 14</b>		<b>Category desc: Bridge Overlay</b>								
\$17,852.73	\$21,703.17	<a href="#">FEDERAL</a>	Unlimited	1	80.000%	383	I20E	N	Y	N
\$4,463.18	\$4,340.63	<a href="#">STATE</a>	Unlimited	1	20.000%	363		N	Y	
\$22,315.91	\$21,703.17									

Figure 2.7 FIIPS project information

Always use the dialog box to edit the category information and do not edit their headings (i.e. "Categories") on the "Bid Items" worksheet.

**ENGINEER'S ESTIMATE / Q2P WORKBOOK**

Setup Category, Federal Work Type & Category Description...

Category: 0010 Federal Work Type: 05 - 4R Maintenance, Resurfacing

Category Description: Roadway Construction

Funding: 80% Federal 20% State

OK Cancel

UNIT PRICE	COST
15.00%	\$0.00
	\$0.00
	\$0.00

Figure 2.8 Categories, Federal Work Types and Funding entry in Q2P.

If the desired work type is not in the list, type it in (50 – New Tunnel, for example).

5. Save the changes made to this workbook. Saving (to your local computer or a network drive) will enable Excel's Autosave feature, reducing the risk of data loss in the event of a program crash.

### 3. Bid Item Data

The *Data* section of the Q2P ribbon houses two bid item commands:

**Published Bid Items** and **Project Bid Items**

#### 3.1 Published Bid Items

**Q2P > Data > Published Bid Items** (Figure 3.1) will display the most current list of bid items downloaded from the AWP server based upon the Spec. Book year chosen in the **Project Setup** screen (Figure 3.2). **This is for informational purposes only.**

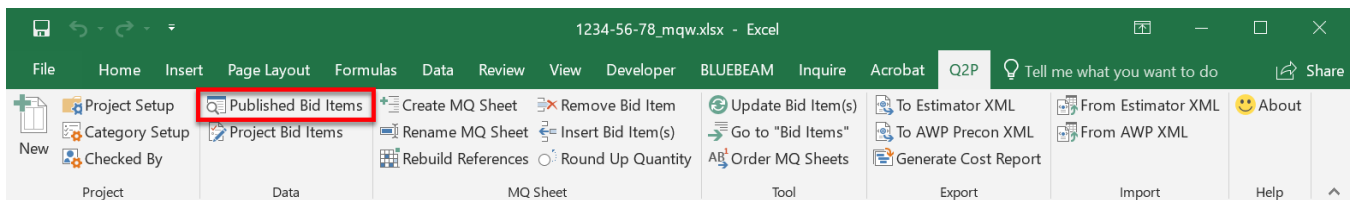


Figure 3.1 "Published Bid Items" command.

All Published Bid Items										
RefItem Name:		Filter		1 of 3427						
RefItemNam	SpecBook	Description	ShortDesc	Unit	CreatedDT	LastUpdatec	IsObsolete	ObsoleteDT	RefItemId	
108.3100.S	03	Incentive/...	Inc/Dis for ...	CD	10/14/201...	6/19/2017 ...	<input type="checkbox"/>		12345	
108.4300	03	RBC Progr...	RBC Progr...	EACH	10/14/201...	10/14/201...	<input type="checkbox"/>		6710	
108.4400	03	CPM Progr...	CPM Progr...	EACH	10/14/201...	6/14/2017 ...	<input type="checkbox"/>		6534	
201.0105	03	Clearing	Clearing	STA	10/14/201...	10/14/201...	<input type="checkbox"/>		6535	
201.0110	03	Clearing	Clearing	SY	10/14/201...	10/14/201...	<input type="checkbox"/>		6536	
201.0115	03	Clearing	Clearing	ACRE	10/14/201...	10/14/201...	<input type="checkbox"/>		6537	
201.0120	03	Clearing	Clearing	ID	10/14/201...	10/14/201...	<input type="checkbox"/>		6538	
201.0205	03	Grubbing	Grubbing	STA	10/14/201...	10/14/201...	<input type="checkbox"/>		6539	
201.0210	03	Grubbing	Grubbing	SY	10/14/201...	10/14/201...	<input type="checkbox"/>		6540	
201.0215	03	Grubbing	Grubbing	ACRE	10/14/201...	10/14/201...	<input type="checkbox"/>		6541	
201.0220	03	Grubbing	Grubbing	ID	10/14/201...	10/14/201...	<input type="checkbox"/>		6542	

Figure 3.2 List of currently published bid items from AWP.

### 3.2 Project Bid Items

**Q2P > Data > Project Bid Items** (Figure 3.3) will display the active workbook's (a.k.a. project's) list of bid items. When a new Q2P project is started, the program creates a snapshot of the published bid items based upon data from the AWP server for the chosen Spec. Book year. This **Project Bid Items** list (Figure 3.4) is also editable by the user to add or delete user defined items. See section [7. Items with Supplemental Descriptions](#).

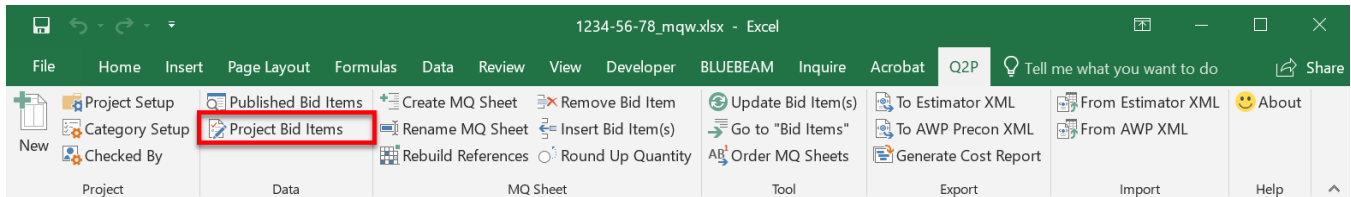


Figure 3.3 "Project Bid Items" command.

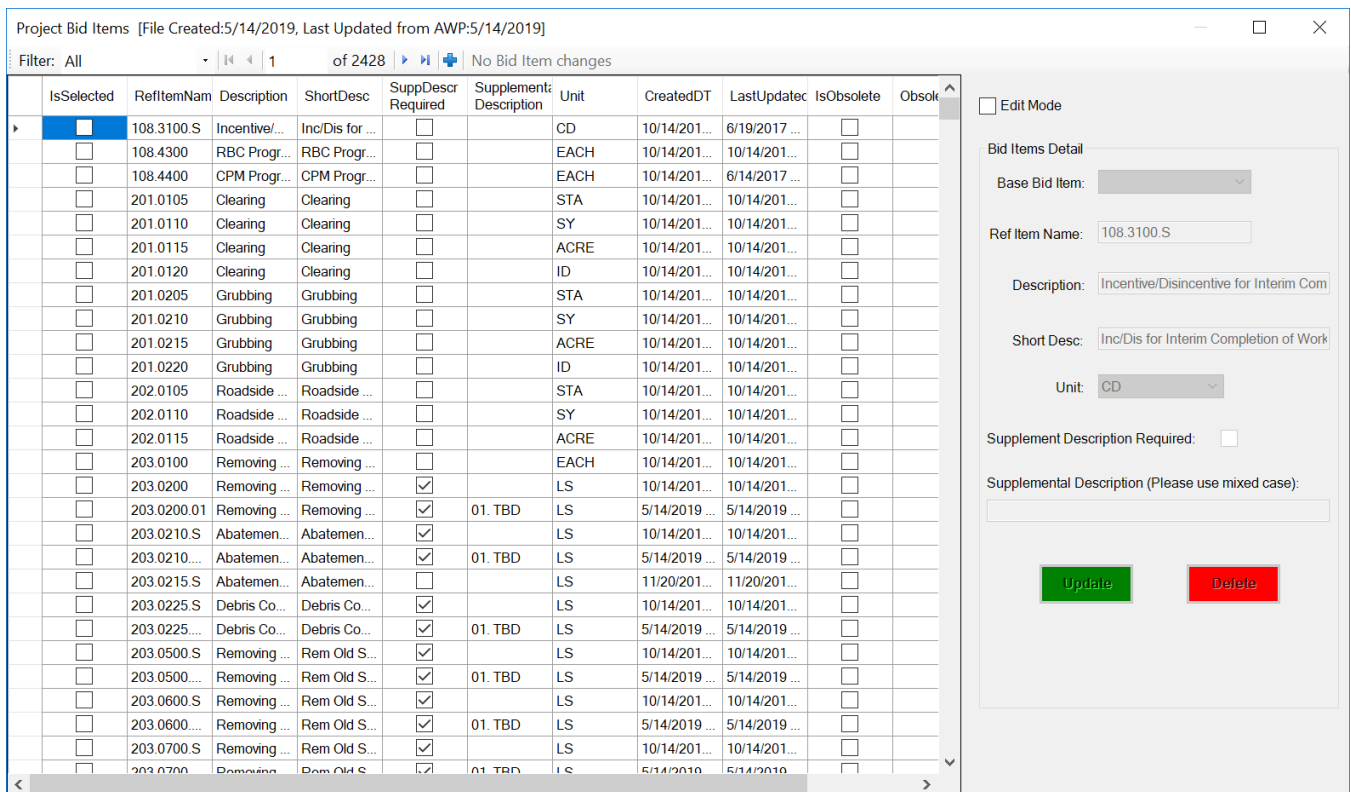


Figure 3.4 List of currently available items saved locally to your machine for use in Q2P.

### 3.3 Updating and Reconciling the Standard Bid Item List

Most projects will not be designed in less than a year which requires the need to contend with WisDOT's yearly updates to its Standard Specification list of bid items and Standardized Special Provision items. Although users are unable to manually add or delete standard bid items, Q2P does have a **Reconciliation Tool** available (Figure 3.5) to compare the list of bid items in the Q2P workbook with the list of bid items in the AWP database server based upon the chosen spec. book year. This tool also allows users to update their **Project Bid Item** list with any new bid items from year to year when they change the Spec. Book year in the **Project Setup** window or if the chosen Spec book list of items has had changes made in AWP.

Q2P will attempt to query the AWP database to pull the current bid item master list each time the user opens Q2P from a new Excel session. Alternatively, the user can force an update to the **Project Bid Item** list by pressing the **Published Bid Items** button in the Q2P ribbon. Both methods require an active internet connection.

To check for any bid item changes:

1. Select **Q2P > Data > Project Bid Items**. If there are any changes, users will notice a string of red text (Figure 3.5) next to the blue "+" in the "Project Bid Items" dialog box.

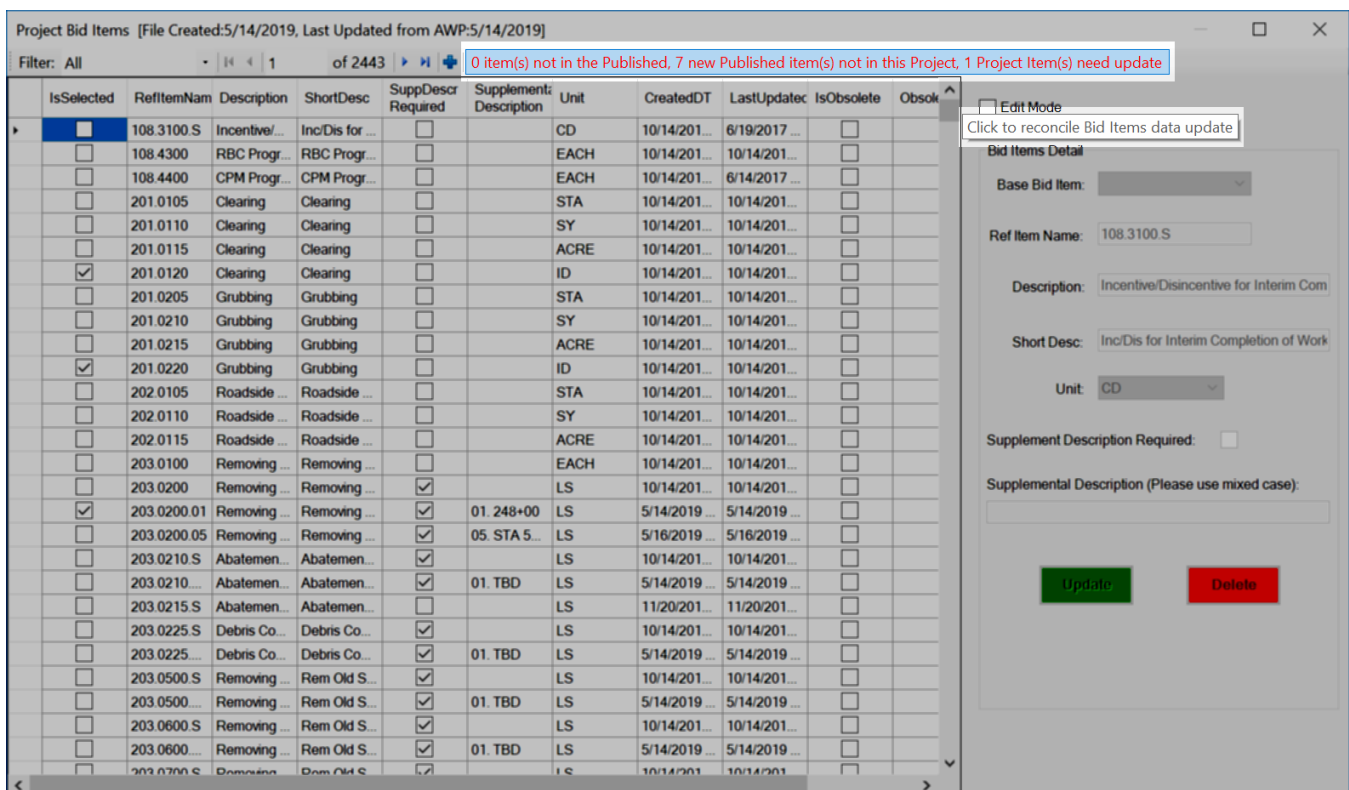


Figure 3.5 Reconciliation Tool in "Project Bid Items" dialog box.

2. Click on the red colored text to bring up the "Reconcile Project Bid Items with Published Bid Items" dialog box (Figure 3.6).

**Reconcile Project Bid Items with Published Bid Items**

New

Bid Items in this Project but not in the Published:

	RefItemNam	Description	ShortDesc	Unit	CreatedDT	LastUpdatec	IsObsolete	ObsoleteDT	SuppDescrR	RefItemId	SpecBook	IsSelected
--	------------	-------------	-----------	------	-----------	-------------	------------	------------	------------	-----------	----------	------------

^Add to Project^

New Bid Items in the Published but not in this Project:

	RefItemNam	Description	ShortDesc	Unit	CreatedDT	LastUpdatec	IsObsolete	ObsoleteDT	SuppDescrR	RefItemId	SpecBook
▶	211.0600.S	Prepare CI...	Prep CIR ...	EACH	6/4/2019 8...	6/4/2019 8...	<input type="checkbox"/>		<input checked="" type="checkbox"/>	14123	03
	211.0700.S	Prepare F...	Prep Fdn f...	EACH	6/4/2019 8...	6/4/2019 8...	<input type="checkbox"/>		<input checked="" type="checkbox"/>	14124	03
	211.0800.S	Base Rep...	Base Rep...	CY	6/4/2019 8...	6/4/2019 8...	<input type="checkbox"/>		<input checked="" type="checkbox"/>	14125	03
	327.1000.S	CIR Aspha...	CIR Aspha...	SY	6/4/2019 8...	6/4/2019 9...	<input type="checkbox"/>		<input checked="" type="checkbox"/>	14126	03
	455.0770.S	Asphalt St...	Asphalt St...	TON	6/4/2019 8...	6/4/2019 8...	<input type="checkbox"/>		<input type="checkbox"/>	14127	03
	502.9000.S	Underwate...	Underwate...	EACH	6/3/2019 3...	6/3/2019 3...	<input type="checkbox"/>		<input checked="" type="checkbox"/>	14121	03
	606.9105.S	Underwate...	Udrwtr Su...	LF	6/3/2019 3...	6/3/2019 3...	<input type="checkbox"/>		<input checked="" type="checkbox"/>	14122	03

Change

Bid Items in this Project need update:

	RefItemNam	Description	ShortDesc	Unit	CreatedDT	Last
▶	615.1000	Wisconsin ...	Wisconsin ...	LS	10/14/201...	10/1...

Bid Items in the Published have change(s):

	RefItemNam	Description	ShortDesc	Unit	CreatedDT
▶	615.1000	Wisconsin ...	Wisconsin ...	EACH	10/14/201...

Highlight Differences

Figure 3.6 Reconciliation Tool in “Project Bid Items” dialog box.

3. Review the “Reconcile Project Bid Items with Published Bid Items” dialog box to view each specific item change.
- A. **Bid Items in this Project but not in the Published:** This section displays standard items that are contained in your Q2P file, but are not housed within the AWP list. This section is normally blank, but an item showing up in this window could indicate that an item has been removed from the AWP master list that your Q2P file still utilizes. This section is for informational purpose only.
- B. **New Bid Items in the Published but not in this Project:** This section displays any new bid items that were added to the AWP master list that did not exist when your Q2P file was created. Typically, these are the new items from a yearly specification book update. If you want to add these bid items to your current Q2P projects bid item list, select the item(s) you want to add, then click on the “^Add to

**Project^**” button located just above this section. This will insert the new specification bid items to your Q2P project bid items list so you can create the associated MQ sheets.

✱ *If a new bid item is added that requires a supplemental description, you will also need to create a new bid item as outlined in section [7.1 Add a New Item to the Project Bid Items List](#) prior to creating an MQ sheet or adding it to an existing MQ sheet.*

- C. **Bid Items in this Project need update: & Bid Items in the Published have changes:** These two sections display any changes to previously existing bid items numbers. This could include description changes, unit of measurement changes, or items being marked as obsolete.

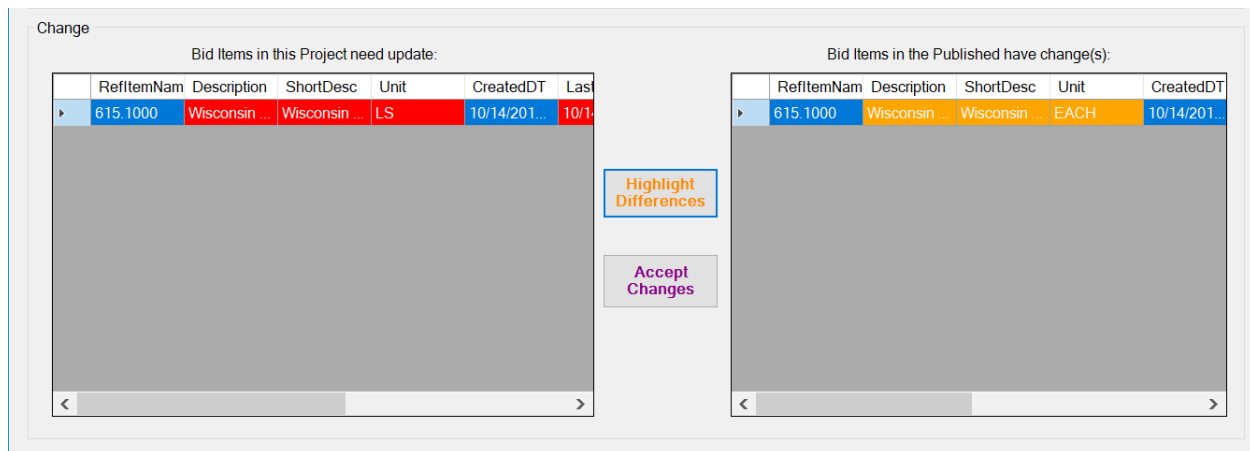


Figure 3.7 “Change” section of the Reconciliation Tool with highlighted differences selected.

The section on the Left-hand side displays the bid item information as it is currently in your Q2P file. The section on the Right-hand side displays the bid item information as it is currently in the AWP database. Clicking on the “Highlight Differences” button will highlight what has changed (Figure 3.7). The columns in this window are expandable to make it easier to read the entire descriptions of bid items. Once the changes are highlighted, you can decide if you want to click on “Accept Changes” to update the Q2P file. This will make your Q2P file match the information in AWP.

⚠ **Prior to accepting any changes, check to see if you have MQ sheets created for any of the updated items. The descriptions, supplemental descriptions and unit of measure are not dynamically linked to the MQ sheet. Therefore, you will need to manually update these fields on your MQ sheet.**

✱ *If the item being updated requires a supplemental description, then any Q2P pre-made “.01” items need to be manually updated following the procedure in section [7.1 Add a New Item to the Project Bid Items List](#). Alternatively, if the item requires a supplemental description, and the change was to the unit of measure or description, the Q2P existing pre-made “.01” item will need to be deleted. Then a new “.01” item will need to be added to the **Project Bid Items** list using the recently changed bid item as a base.*

## 4. Contingency Amounts



Do not include construction contingencies in the Delivery Cost field in Q2P, and do not keep contingencies in the final estimate.

In Q2P, users can add a transient, mock bid item for contingencies for each category.

A separate contingency item is required for each category as the appropriate percentage will vary. Multiple items per each category can also be used, if separating the costs is desired (e.g. Traffic Control and Drainage both in Cat. 0010).

Delivery cost is different than contingency amounts used in preliminary cost estimates; it is an estimate of staffing costs during the construction phase of a project. Prior to final submittal of the cost estimate, this value should be coordinated with the delivery cost/percentage in FIIPS for the project.

To add contingencies, utilize a Lump Sum (LS) SPV item and see section [7. Items with Supplemental Descriptions](#). Remember to reduce the cost amount of your contingency item as you add the individual bid items to your estimate related to the contingency item. This keeps your total estimate cost from being artificially inflated as you give periodic cost updates throughout the lifespan of the design project.

## 5. Adding Bid Items and MQ Sheets

From the *MQ Sheet* section of the Q2P ribbon, **Q2P > MQ Sheet > Create MQ Sheet** (Figure 5.1) will bring up the dialog box to add the item/s and create the miscellaneous quantity (MQ) sheet/s in one step. If multiple bid items are created on one MQ sheet, that is known as a “summary sheet.”

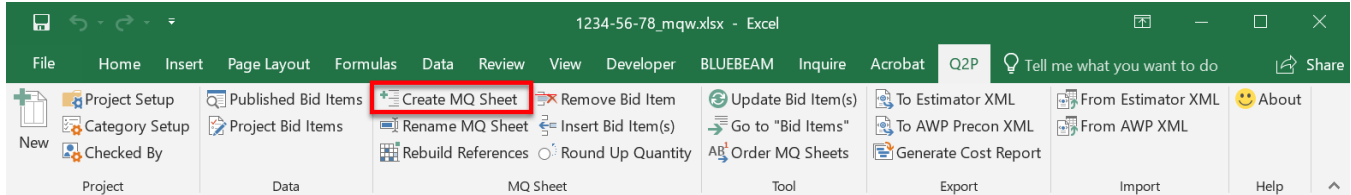



Figure 5.1 “Create MQ Sheet” command.

1. Once the “Create MQ Sheet...” dialog box appears (Figure 5.2), select the desired items and the appropriate categories to be associated with those items. You can type part of the item description in the search bar to navigate to a particular item in the list, but be aware that Q2P is unable to search within supplemental descriptions. Select multiple items/categories by holding either the “Shift” or “Ctrl” keys and clicking different items, or by clicking and dragging across your selection. To completely reset the selection, use either the “Reset Bid Items Selection” or the “Reset Categories Selection” buttons.

 *Use of the Shift key allows for the selection of all items between the two selected; use of the Ctrl key allows for discrete selection and de-selection with every click.*

 **Use caution when holding the “Ctrl” key to select multiple items. If you accidentally release the “Ctrl” key while selecting an additional item, all previously selected items in the list will no longer be selected.**

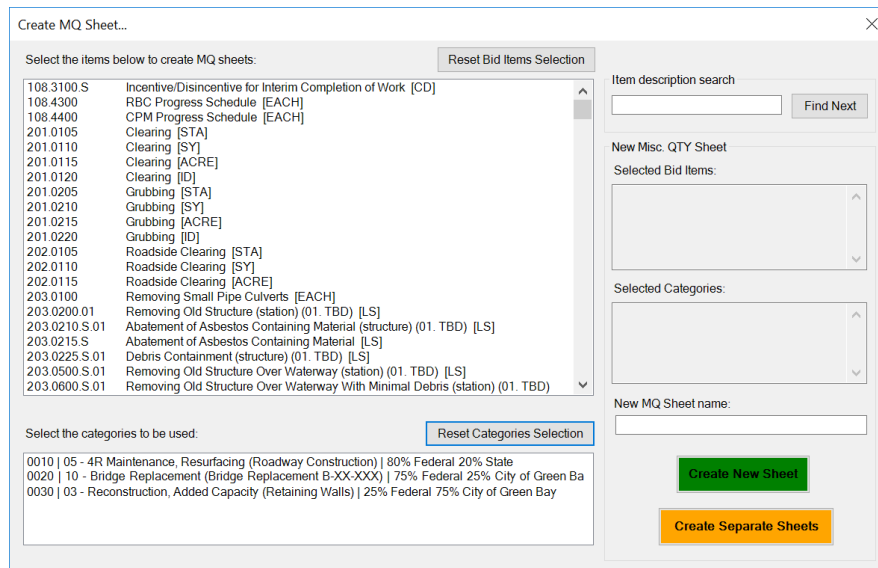


Figure 5.2 “Create MQ Sheet...” dialog box.

2. To finish, select “Create New Sheet” to put all selected bid items on one summary sheet, or select “Create Separate Sheets” to create separate individual MQ sheets for each bid item.



*If creating a summary sheet, remember to name the sheet with a numerical prefix so that it is inserted in the order of your preference. (i.e. 202-Clearing and Grubbing)*



If an MQ sheet is created in error, using the Excel undo/redo is not recommended. If an MQ sheet must be deleted after it is created, use the Q2P **Remove Bid Item** command.

Occasionally the Excel worksheets will get out of numeric order when creating new MQ sheets. Use **Q2P > Tool > Order MQ Sheets** (Figure 5.3) to reorder the worksheets.

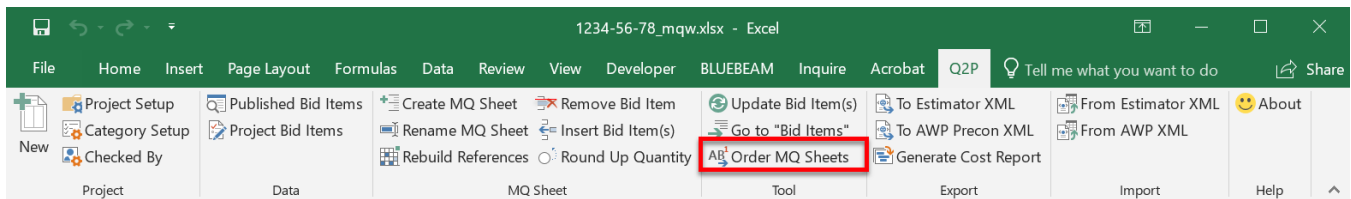


Figure 5.3 “Order MQ Sheets” command.

## 6. Adding/Deleting Categories

Users can easily add additional categories and delete unwanted categories from existing MQ sheets using the following workflows.

### 6.1 Add Categories

Before adding additional categories to an existing MQ sheet, confirm that those additional categories have already been set up via step 4 of section [2. Begin a New Project](#). To add additional categories to an existing MQ sheet:

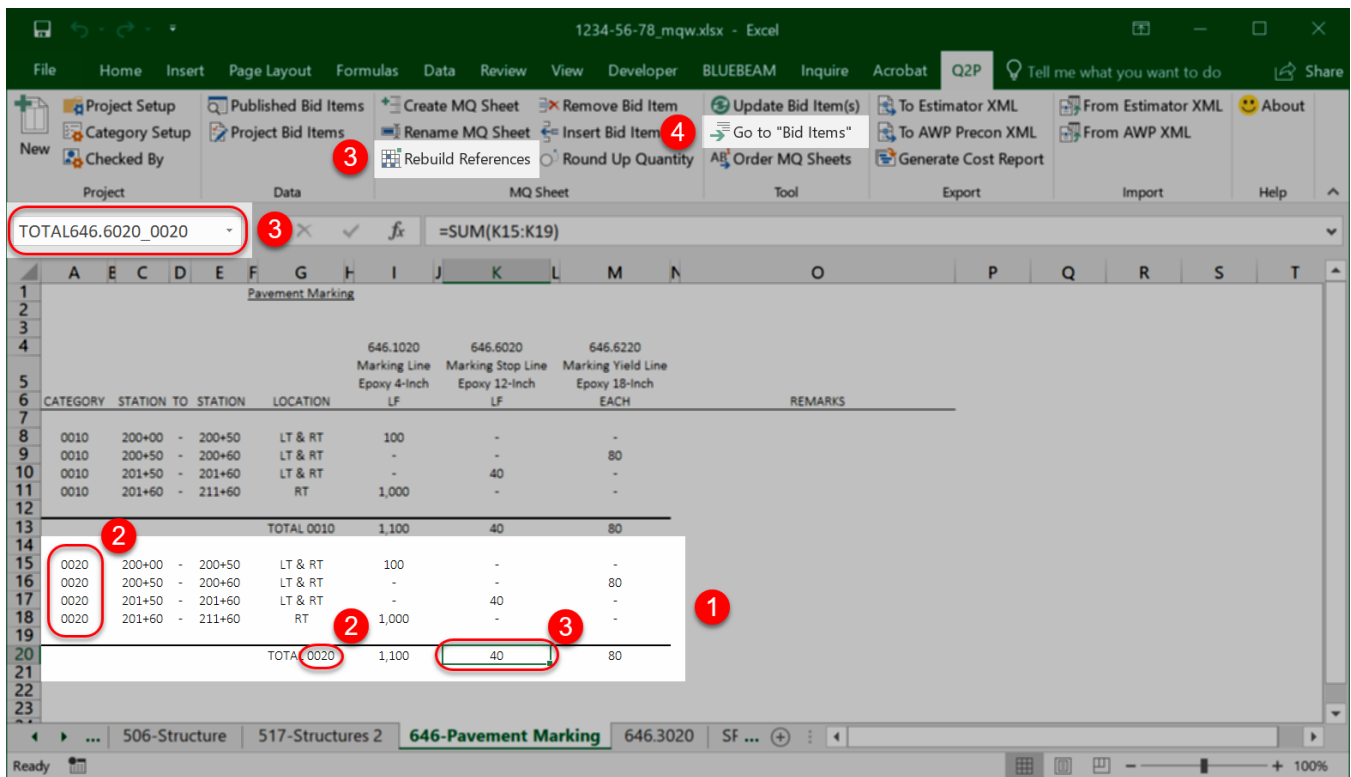


Figure 6.1 Adding a category to an existing MQ sheet.

1. Copy and paste the text and formatting of a category name and total that is already on the MQ sheet or summary sheet and place them in the same columns.
2. Change the text to the desired category.
3. Select **Q2P > MQ Sheet > Rebuild References** to bring up the "Rebuilding reference in MQ Sheet" dialog box (Figure 6.2) and select "Start Rebuilding" to create the proper named ranges for the bid item total(s).

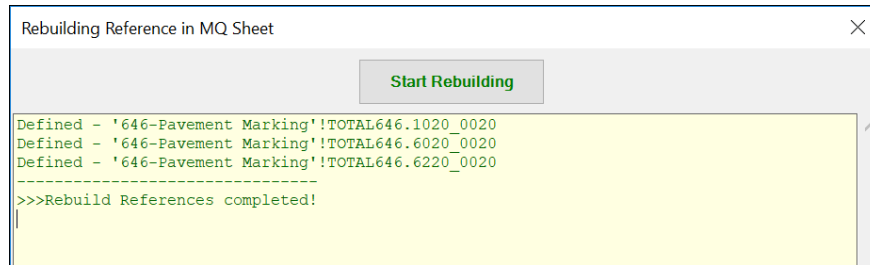


Figure 6.2 “Rebuilding reference in MQ Sheet” dialog box after references have been built.

4. Select **Q2P > Tool > Go to “Bid Items”** or use the right-click menu to navigate back to the main “Bid Items” worksheet.
5. Use **Q2P > Tool > Update Bid Items(s)** and select “Update All in this Worksheet”. Select “Yes” to confirm and refresh the links to the “Bid Items” worksheet. Click “OK” to close the dialog box and see the reflected changes (Figure 6.3).

TOTAL BID ITEMS		SCHEDULE OF BID ITEMS WISDOT STANDARD SPECIFICATION	
56	ITEM DESCRIPTION	QUANTITY	UNIT
517.1050.S.01	Architectural Surface Treatment (structure) (01. 8-13-572)	4370	SF
646.1020	Marking Line Epoxy 4-Inch	2200	LF
646.3020	Marking Line Epoxy 8-Inch	598	LF
646.6020	Marking Stop Line Epoxy 12-Inch	80	LF
646.6220	Marking Yield Line Epoxy 18-Inch	160	EACH
SPV.0035.04	Special (04. Pavement Marking Epoxy 4-Inch)	5417	CY
SPV.0035.08	Special (08. Pavement Marking Epoxy 8-Inch)	598	CY
SPV.0035.50	Special (50. Gravel)	400	CY
SPV.0195.01	Special (01. Lukewarm Mix Asphalt Pavement Type Q-42)	350	TON
SPV.0195.02	Special (02. Cool Mix Asphalt Pavement Type 1)	500	TON
<b>Bid Items</b>   201-Clearing and Grubbing   203.0200.01   204-Removals   20 ... (+)   ◀			

Figure 6.3 Updated bid item quantities after adding another category.

## 6.2 Delete Categories from Project



Only the last category (max. category number) can be deleted from **Category Setup**. Before proceeding, verify that the category to be deleted is not being used in any MQ Sheet.

To delete a category (e.g. Category 0030) out of the entire project or from the “Bid Items” worksheet:

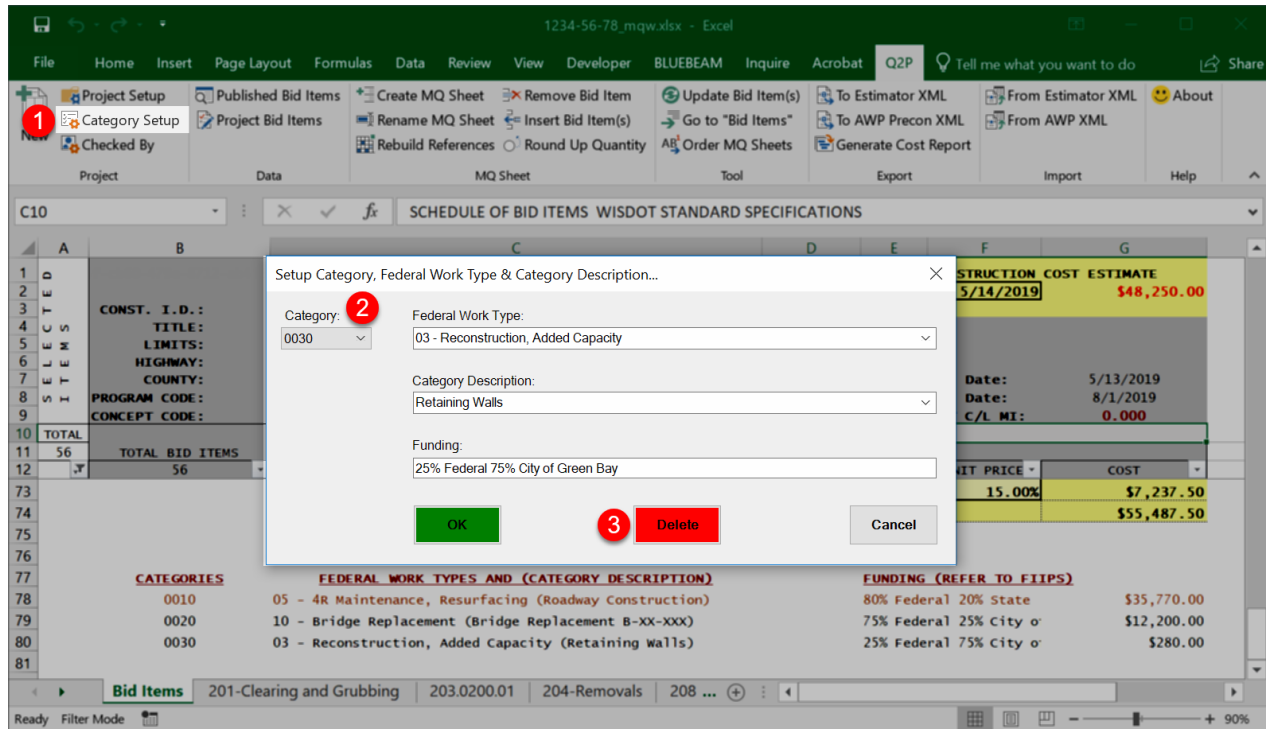


Figure 6.4 Category Setup window.

1. Use **Q2P < Project < Category Setup** to bring up the “Setup Category, Federal Work Type & Category Description...” dialog box.
2. Select the last existing category (Category 0030 in this case) from the “Category” drop-down.
3. Select “Delete” to finish and close the dialog box.

The row previously containing the deleted category should be cleared as in Figure 6.5.

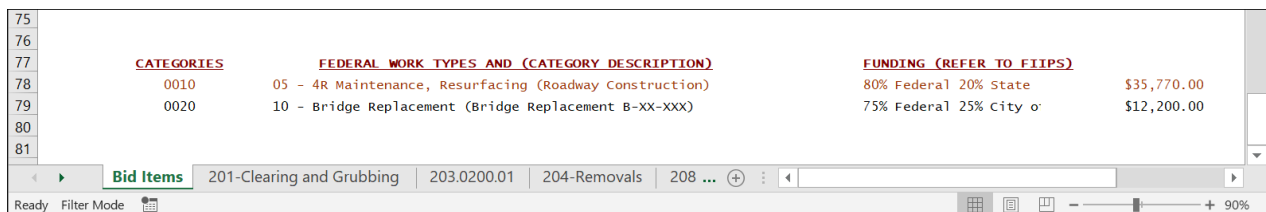


Figure 6.5 Category 0030 is no longer visible in the list of categories.



If a category is listed on an MQ sheet, but not defined on the “Bid Items” worksheet, Q2P will not recognize any totals for that category and they will not appear in the Cost Report or the XML files to Estimator or AWP.

### 6.3 Delete Categories from MQ Sheets

Delete unneeded category rows (using Excel commands) from the individual MQ sheets. Do not keep empty Cat. 0020, 0030 totals on the MQ sheet or summary sheet (unless intended to be used at a later time.) To delete unneeded categories from an existing MQ sheet:

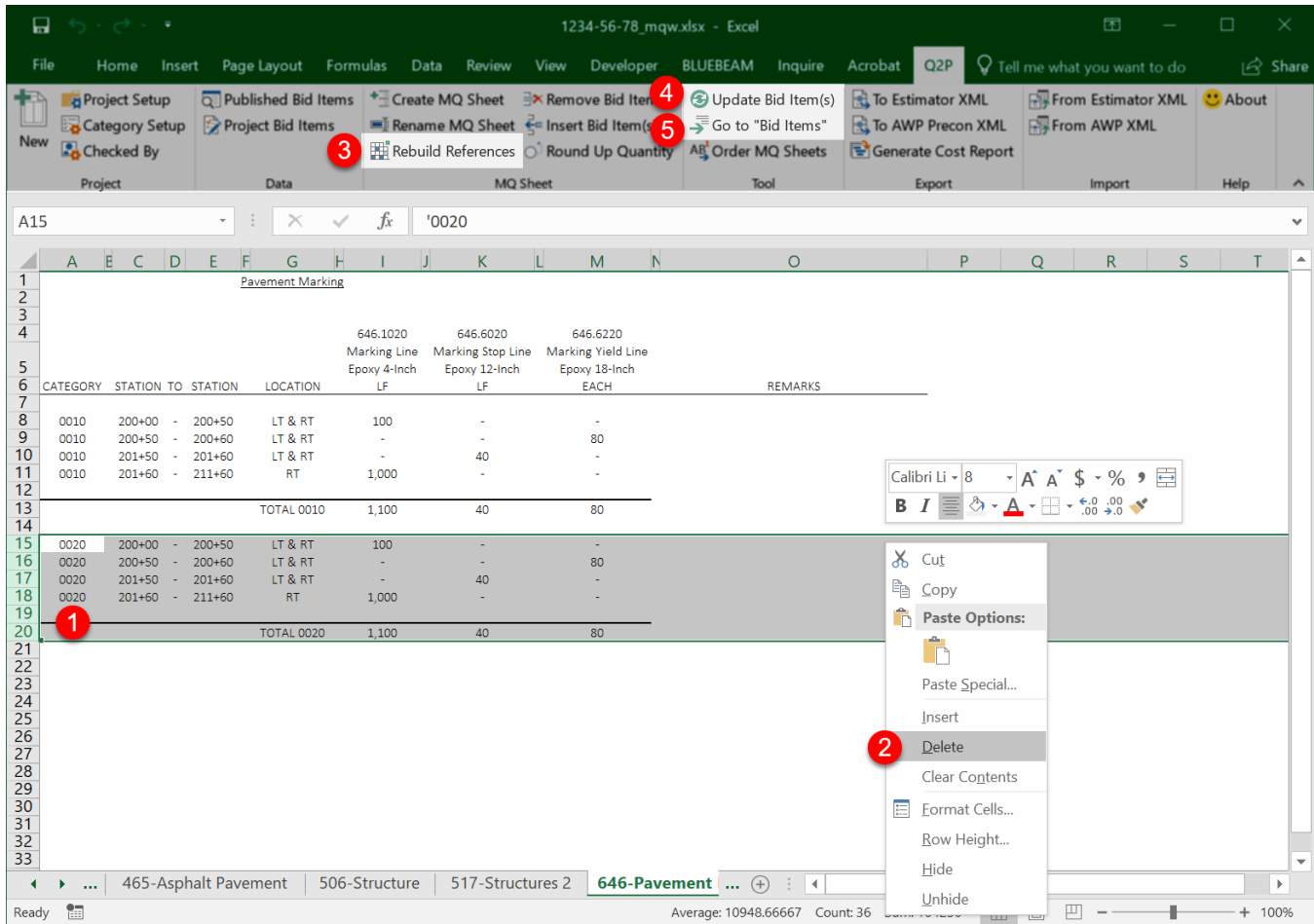


Figure 6.6 Deleting a category from an existing MQ sheet.

1. Select the rows of cells of the category to delete by clicking and dragging over the row numbers (for example, rows 15-20 in Figure 6.6).
2. Right click on the selection and click "Delete".
3. Use **Q2P > MQ Sheet > Rebuild References** and select "Start Rebuilding" to refresh the named ranges for the bid item total(s).
4. Use **Q2P > Tool > Update Bid Item(s)** and select "Update All in this Worksheet". Select "Yes" to confirm and refresh the links to the "Bid Items" worksheet. Click "OK" to close the dialog box.
5. Use **Q2P > Tool > Go to "Bid Items"** or use the right-click menu to navigate back to the main "Bid Items" worksheet to see the reflected changes (Figure 6.7).

A		B		C		D		E		F		G	
1	SELECTED ITEMS	ENGINEER'S ESTIMATE / Q2P WORKBOOK								CONSTRUCTION COST ESTIMATE			
2		PROJECT MANAGER: JOHN DOE								5/14/2019 \$36,050.00			
3		CONST. I.D.:		1234-56-78									
4		TITLE:		WAUKESHA - SUPERIOR									
5		LIMITS:		GREEN BAY TO LA CROSSE									
6		HIGHWAY:		STH 1									
7		COUNTY:		Adams						PSE Date: 5/13/2019			
8		PROGRAM CODE:		303 STATE HIGHWAY REHABILITATION						Let Date: 8/1/2019			
9		CONCEPT CODE:		RESURF RESURFACING						NET C/L MI: 0.000			
10	TOTAL	SCHEDULE OF BID ITEMS WISDOT STANDARD SPECIFICATIONS											
11	56	TOTAL BID ITEMS											
12	56												
				ITEM DESCRIPTION		QUANTITY		UNIT		UNIT PRICE		COST	
59	x	517.1050.S.01	Architectural Surface Treatment (structure) (01. B-13-572)			4370 SF						\$0.00	
60	x	646.1020	Marking Line Epoxy 4-Inch			1100 LF				\$10.00		\$11,000.00	
61	x	646.3020	Marking Line Epoxy 8-Inch			598 LF						\$0.00	
62	x	646.6020	Marking Stop Line Epoxy 12-Inch			40 LF				\$10.00		\$400.00	
63	x	646.6220	Marking Yield Line Epoxy 18-Inch			80 EACH				\$10.00		\$800.00	
64	x	SPV.0035.04	Special (04. Pavement Marking Epoxy 4-Inch)			5417 CY						\$0.00	
65	x	SPV.0035.08	Special (08. Pavement Marking Epoxy 8-Inch)			598 CY						\$0.00	
66	x	SPV.0035.50	Special (50. Gravel)			400 CY						\$0.00	
67	x	SPV.0195.01	Special (01. Lukewarm Mix Asphalt Pavement Type Q-42)			350 TON						\$0.00	
		Bid Items		201-Clearing and Grubbing		203.0200.01		204-Removals		208 ... (+)			

Figure 6.7 Updated bid item quantities after deleting unneeded category.



Do not overwrite an existing category on an MQ sheet to change it. For example, you create a sheet with structure items on it under CAT 0010 and realize those items should have been under CAT 0020. If you change the 0010 to 0020 on the MQ sheet and run the Rebuild References and Update Bid Items command; Q2P will create the named ranges for the 0020 category, however it will not delete the named ranges for the 0010 category. Q2P now has two different named ranges pointing to the same cell and will show a double quantity on the main Bid Items sheet. For this case, it is better to copy your quantities somewhere else temporarily, delete all the items from this worksheet, then create a new MQ sheet with the correct category for those bid items.

## 7. Items with Supplemental Descriptions

Items that contain ( ) in their **ITEM DESCRIPTION** and **SPV** items are required to have a supplemental description entered, and a unique bid item number assigned. This is true for any item that has extra digits appended to the item number – item numbers must be unique if they are intended to pay for different things within the contract.



For these special items in Q2P, the bid item numbers must be set up properly in the **Project Bid Items** list PRIOR to creating the item MQ sheets.

For contracts with multiple projects, remember that items that need a supplemental description, such as “Finishing Roadway (project),” need unique numbers for each project, for example:

Finishing Roadway (**01. 1234-56-78**); Finishing Roadway (**02. 9999-99-79**)

## 7.1 Add a New Item to the Project Bid Items List Using the “Project Bid Items” Dialog Box



Be aware that this only inserts a new item into this project's **Project Bid Items** list, and either the associated MQ sheet needs to be created via workflow [5. Adding Bid Items and MQ Sheets](#), or this item needs to be added to an existing MQ sheet via workflow [8.2 Inserting a Bid Item into an Existing MQ Sheet](#).

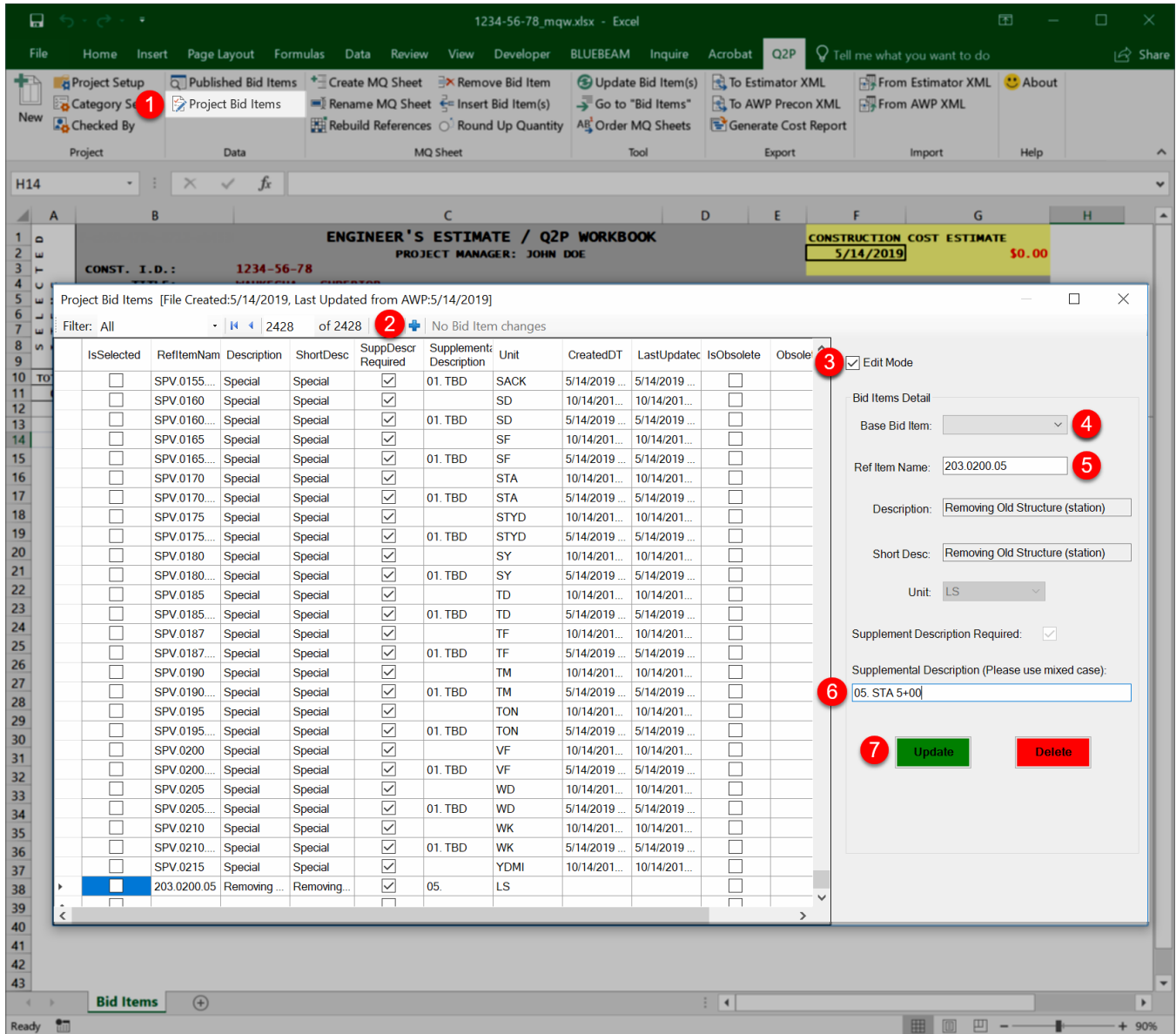


Figure 7.1 “Project Bid Items” dialog box.

1. Select **Q2P > Data > Project Bid Items** to bring up the “Project Bid Items” dialog box.
2. Select the blue “+” button to add a new item to the bottom of the list.
3. Make sure the “Edit Mode” box is checked.

4. Select a base bid item to modify.

✂ If you are adding a single iteration of an item requiring a supplemental description, Q2P includes pre-made “.01” versions of such items for the user to simply select from the list and modify. (See Figure 7.2)

✂ The .S items that do not require a supplemental description are only used once and therefore, can be selected directly from the list when creating MQ sheets. Note how these .S items have a blank field in the “Supplemental Description” column. (See Figure 7.2)

Project Bid Items [File Created:5/14/2019, Last Updated from AWP:5/14/2019]

Filter: All

IsSelected	RefItemName	Description	ShortDesc	SuppDescr Required	Supplemental Description	Unit
<input type="checkbox"/>	204.0225	Removing Septic T...	Removing Septic Tanks	<input type="checkbox"/>		EACH
<input type="checkbox"/>	204.0230	Removing Building ...	Removing Building (station)	<input checked="" type="checkbox"/>		LS
<input type="checkbox"/>	204.0230.01	Removing Building ...	Removing Building (station)	<input checked="" type="checkbox"/>	01. TBD	LS
<input type="checkbox"/>	204.0235	Removing Building...	Removing Buildings (parcel)	<input checked="" type="checkbox"/>		LS
<input type="checkbox"/>	204.0235.01	Removing Building...	Removing Buildings (parcel)	<input checked="" type="checkbox"/>	01. TBD	LS
<input type="checkbox"/>	204.0240	Site Clearance (par...	Site Clearance (parcel)	<input checked="" type="checkbox"/>		LS
<input type="checkbox"/>	204.0240.01	Site Clearance (par...	Site Clearance (parcel)	<input checked="" type="checkbox"/>	01. TBD	LS
<input type="checkbox"/>	204.0245	Removing Storm S...	Removing Storm Sewer (size)	<input checked="" type="checkbox"/>		LF
<input type="checkbox"/>	204.0245.01	Removing Storm S...	Removing Storm Sewer (size)	<input checked="" type="checkbox"/>	01. TBD	LF
<input type="checkbox"/>	204.0250	Abandoning Manh...	Abandoning Manholes	<input type="checkbox"/>		EACH
<input type="checkbox"/>	204.0255	Abandoning Catch ...	Abandoning Catch Basins	<input type="checkbox"/>		EACH
<input type="checkbox"/>	204.0260	Sealing Pipes	Sealing Pipes	<input type="checkbox"/>		EACH
<input type="checkbox"/>	204.0280	Sealing Pipes	Sealing Pipes	<input type="checkbox"/>		EACH
<input type="checkbox"/>	204.0291.S	Abandoning Sewer	Abandoning Sewer	<input type="checkbox"/>		CY
<input type="checkbox"/>	204.9001.S	Removing Advanc...	Remov Adv Flasher Assemblies Type 1	<input type="checkbox"/>		EACH
<input type="checkbox"/>	204.9002.S	Removing Advanc...	Remov Adv Flasher Assemblies Type 2	<input type="checkbox"/>		EACH
<input type="checkbox"/>	204.9025.S	Removing (item de...	Removing (item description)	<input checked="" type="checkbox"/>		CF
<input type="checkbox"/>	204.9025.S.01	Removing (item de...	Removing (item description)	<input checked="" type="checkbox"/>	01. TBD	CF
<input type="checkbox"/>	204.9035.S	Removing (item de...	Removing (item description)	<input checked="" type="checkbox"/>		CY
<input type="checkbox"/>	204.9035.S.01	Removing (item de...	Removing (item description)	<input checked="" type="checkbox"/>	01. TBD	CY
<input type="checkbox"/>	204.9060.S	Removing (item de...	Removing (item description)	<input checked="" type="checkbox"/>		EACH
<input type="checkbox"/>	204.9060.S.01	Removing (item de...	Removing (item description)	<input checked="" type="checkbox"/>	01. TBD	EACH
<input type="checkbox"/>	204.9070.S	Removing (item de...	Removing (item description)	<input checked="" type="checkbox"/>		GAL
<input type="checkbox"/>	204.9070.S.01	Removing (item de...	Removing (item description)	<input checked="" type="checkbox"/>	01. TBD	GAL

Non-Editable Base Item

Pre-Made Editable Supplemental Description

.S Item  
(Does not require supplemental description)

Bid Items Detail

Base Bid Item: [Dropdown]

Ref Item Name: 204.0160

Description: Removing Lip Curb

Short Desc: Removing Lip Curb

Unit: LF

Supplement Description Required: ☐

Supplemental Description (Please use mixed case):

Update Delete

Figure 7.2 Examples of special items. (SPV items included, but not shown)

5. Add the desired supplemental numerical suffix with (typically) two digits.

✂ The item number suffix can and typically restarts at 01 for each different bid item. The numbers do not need to be sequential, and in some cases, it is beneficial to leave a gap in numbering, especially for when multiple items will be defined in a single special provision, so additional sizes, types, etc. can later be easily added and grouped with like items. (See Figure 7.3)

6. Add the desired supplemental description using the **XX. Description** format.

7. Select “Update” to add the item to the “Project Bid Items” list for future use.



*When editing the SPV item descriptions, the word “Special” is retained even though it would not be in the special provision language. (See Figure 7.3)*

TOTAL BID ITEMS		SCHEDULE OF BID ITEMS WISDOT STANDARD SPECIFICATIONS			
10	ITEM DESCRIPTION	QUANTITY	UNIT	UNIT PRICE	COST
203.0200.01	Removing Old Structure (station) (01. 100+00)	0	LS		\$0.00
415.1150.s.01	Concrete Pavement Fast Track (inch) (01. 72-Inch)	0	SY		\$0.00
646.6464	Cold Weather Marking Epoxy 4-Inch	0	LF		\$0.00
SPV.0035.04	Special (04. Pavement Marking Epoxy 4-Inch)	0	CY		\$0.00
SPV.0035.08	Special (08. Pavement Marking Epoxy 8-Inch)	0	CY		\$0.00
SPV.0035.12	Special (12. Pavement Marking Epoxy 12-Inch)	0	CY		\$0.00
SPV.0035.50	Special (50. Gravel)	0	CY		\$0.00
SPV.0195.01	Special (01. Lukewarm Mix Asphalt Pavement Type Q-42)	0	TON		\$0.00
SPV.0195.02	Special (02. Cool Mix Asphalt Pavement Type 1)	0	TON		\$0.00
SPV.0210.01	Special (01. Surveillance of Alt Route)	0	WK		\$0.00

Figure 7.3 Sample list of supplemental descriptions after creating MQ sheets.

More information on naming ( ) and SPV items can be found in [FDM 19-15-80](#) and [FDM 19-15-85](#).

## 7.2 Editing of Supplemental Descriptions After Creation



The “Bid Items” worksheet and the MQ sheets are not dynamically linked for the description text. The bid item description on the MQ sheet is just a copy of the bid item description and supplemental description text. Any changes by the user to the supplemental description via the **Project Bid Items** list will need to be manually updated on the MQ sheet. This allows the user to customize the MQ sheet headers without breaking any links or having their edits overwritten when the **Update Bid Item(s)** command is used. All the data in Q2P is referenced by bid item number, so when a sheet is created, all data is tied to that number and the user changing that number would remove the connection to that data.

The screenshot displays the 'Project Bid Items' dialog box, which is used for managing bid items. The dialog includes a table with the following columns: IsSelected, RefItemNam, Description, ShortDesc, SuppDescr Required, Supplement Description, Unit, CreatedDT, LastUpdate, IsObsolete, and Obsolete. The table lists various bid items, including SPV.0155 through SPV.0215, and a new item '203.0200.04' with the description 'Removing Old Structure (station)'. The 'Ref Item Name' field is highlighted with a red circle '4', and the 'Update' button is highlighted with a red circle '5'. The background shows the 'ENGINEER'S ESTIMATE / Q2P WORKBOOK' with a 'CONSTRUCTION COST ESTIMATE' of \$0.00 as of 5/14/2019.

Figure 7.4 Edits made via “Project Bid Items” dialog box.

1. Select **Q2P > Data > Project Bid Items** to bring up the **Project Bid Items** dialog box.
2. Select the bid item which requires editing the supplemental description.
3. Make sure the “Edit Mode” box is checked.
4. Make the desired changes to either the “Ref Item Name” number or the “Supplemental Description.”



*If the item you are trying to edit is currently part of a MQ sheet, you will not be able to edit the “Ref Item Name” field; only the “Supplemental Description” field. In order to edit the “Ref Item Name,” you will need to remove that bid item from all MQ sheets that contain that item. Use caution as this could delete any notes or quantity information for this item that you may want to save.*

---

5. Select “Update” to apply the changes.



If the numerical suffix of a user defined item needs to change (e.g. 203.0200.**05** to 203.0200.**04**) and the MQ sheet already exists for it, the **Rename MQ Sheet** command must be run. Refer to section [8.3 Renaming an MQ Sheet or Summary Sheet](#) for more guidance on how to do this.

## 8. Combining Multiple Bid Items into One Summary Sheet

### 8.1 Before You Combine Items

Before entering quantities into the MQ sheets, it is best to combine the like items into summary tables. This is preferably done **INITIALLY** using workflow [5. Adding Bid Items and MQ Sheets](#) and opting to add the items onto a single MQ sheet (a.k.a. summary sheet), but this can also be done by inserting a bid item into an existing MQ sheet using the following workflow in [8.2 Inserting a Bid Item into an Existing MQ Sheet](#).

It is good practice to set up all the item MQ sheets categories **BEFORE** combining them onto a summary sheet because adding or deleting categories on the summary sheet requires links to be recreated. Run **Q2P > MQ Sheet > Rebuild References** (Figure 8.1) whenever adding or deleting categories from an MQ sheet or summary sheet to refresh or create the proper links. Run **Q2P > Tool > Update Bid Item(s)** (Figure 8.1) to ensure the “Bid Items” worksheet is also refreshed.

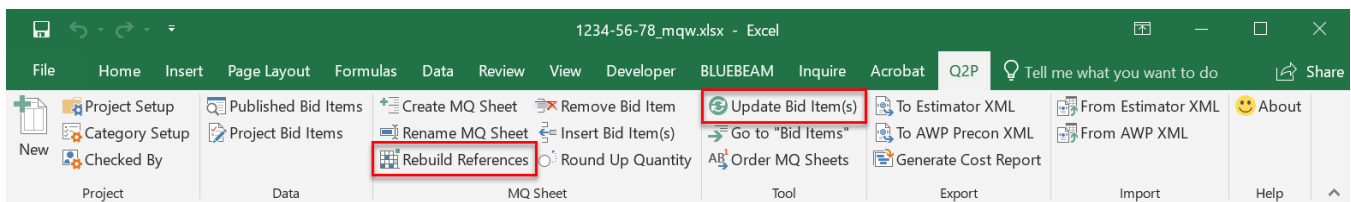


Figure 8.1 “Rebuild References” and “Update Bid Item(s)” commands.



Q2P will track bid item totals that are shown in multiple sheets, so it is important to properly delete any data that is no longer needed. Otherwise, bid item totals may be skewed for cost estimating.

### 8.2 Inserting a Bid Item into an Existing MQ Sheet

1. Navigate to the existing MQ sheet via scrolling to the appropriate tab in Excel or use the right-click menu while hovering on the desired bid item from the main **Bid Items** worksheet then select the sheet you want to navigate to (Figure 8.2 and Figure 8.3).

TOTAL BID ITEMS		
10		
SCHEDULE OF BID ITEMS WISDOT STANDARD		
	ITEM DESCRIPTION	QUANTITY
203.0200.01	Removing Old Structure (station) (01. 100+00)	
415.1150.S.01	Concrete Pavement Fast Track (inch) (01. 72-Inch)	
646.1020	Marking Line Epoxy 4-Inch	
646.3020	Marking Line Epoxy 8-Inch	
SPV.0035.04	Special (04. Pavement Markin	
SPV.0035.08	Special (08. Pavement Markin	
SPV.0035.50	Special (50. Gravel)	
SPV.0195.01	Special (01. Lukewarm Mix As	
SPV.0195.02	Special (02. Cool Mix Asphal	
SPV.0210.01	Special (01. Surveillance of	

Figure 8.2 Right-Click menu.

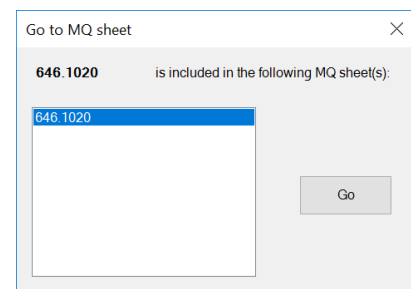


Figure 8.3 Go to MQ sheet dialog box. (Will display multiple sheets if the item is found in multiple sheets.)



*You can also navigate back to the “Bid Items” worksheet via the “Return to “Bid Items”” button in the right-click menu. See step 2 of [Appendix B-2 Quick Navigation](#).*

- From the *MQ Sheet* section of the Q2P ribbon, select **Q2P > MQ Sheet > Insert Bid Item(s)** (Figure 8.4).

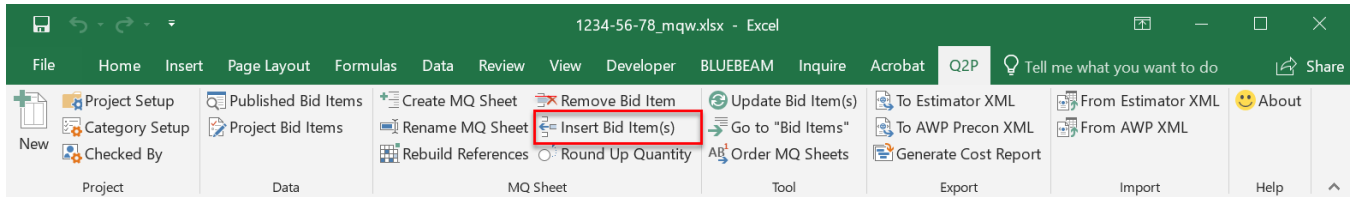


Figure 8.4 "Insert Bid Item(s)" command.

- Select the desired bid item(s) from the "Insert a Bid Item" dialog box (Figure 8.5) to add to the existing MQ sheet and select "Insert" when finished.

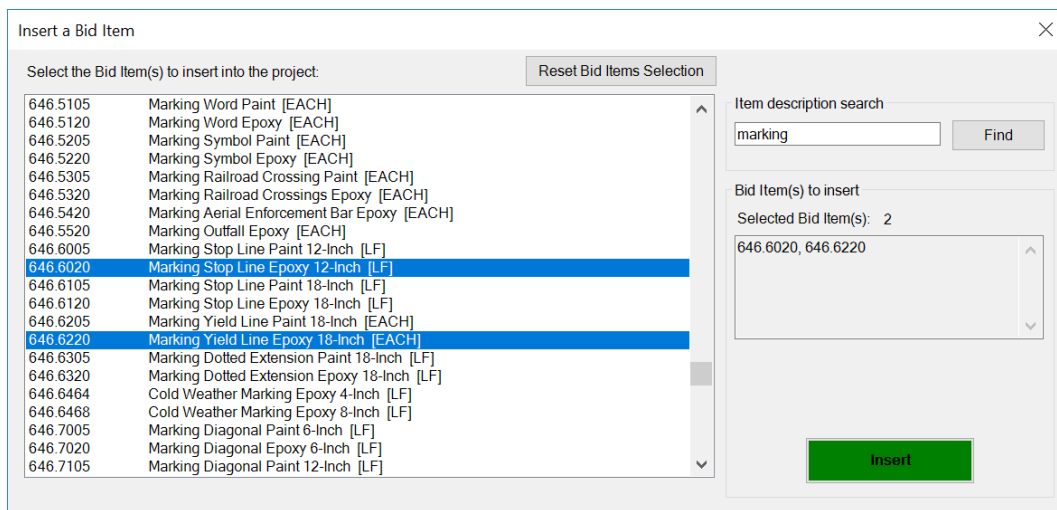


Figure 8.5 "Insert a Bid Item" dialog box.

- Select "Insert" when finished to see the additional items. (See Figure 8.6 for resulting summary sheet which needs to be renamed.)

### 8.3 Renaming an MQ Sheet or Summary Sheet

If a summary sheet was not made from workflow [5. Adding Bid Items and MQ sheets](#) and was made from inserting additional bid items to an existing MQ sheet via workflow [8.2 Inserting a Bid Item into an Existing MQ Sheet](#) (Figure 8.6), you must rename the summary sheet. This tool also works on individual MQ sheets.

CATEGORY	STATION	TO	STATION	LOCATION	REMARKS
0010	-				
0010	-				
0010	-				
0010	-				
0010	-				
0010	-				
TOTAL 0010				0	0

Figure 8.6 Summary sheet created by inserting additional bid items and which needs to be renamed.

1. From the *MQ Sheet* section of the Q2P ribbon, select **Q2P > MQ Sheet > Rename MQ Sheet** (Figure 8.7).

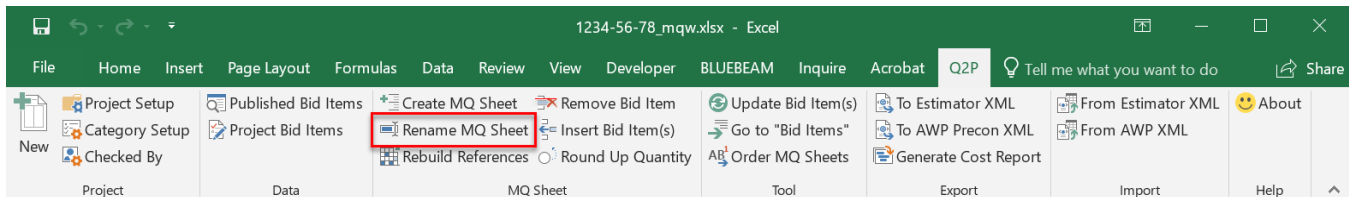


Figure 8.7 “Rename MQ Sheet” command.

2. In the “Rename MQ Sheet” dialog box, **enter a name that starts with three numbers, then a hyphen, and then a description that uses text and hyphens** so the worksheet tab will be placed next to the associated bid items (Figure 8.8).

Rename MQ Sheet

Current Sheet Name: 646.1020

New Sheet Name: 646-Pavement Marking

OK Cancel

Figure 8.8 “Rename MQ Sheet” command.



An Excel worksheet name cannot exceed 31 characters, be blank, or contain any of the following characters \ / : ? \* [ ]. A Q2P summary sheet is further limited to no special characters (other than hyphens in the name).

3. Select “OK” to finish and see the changes (Figure 8.9).

CATEGORY	STATION	TO	STATION	LOCATION	Marking Line Epoxy 4-Inch LF	Marking Stop Line Epoxy 12-Inch LF	Marking Yield Line Epoxy 18-Inch EACH	REMARKS
0010	-	-	-	-	-	-	-	-
0010	-	-	-	-	-	-	-	-
0010	-	-	-	-	-	-	-	-
0010	-	-	-	-	-	-	-	-
0010	-	-	-	-	-	-	-	-
0010	-	-	-	-	-	-	-	-
TOTAL 0010					0	0	0	

Figure 8.9 Renamed Summary sheet.

*The title at the top middle of the summary sheet is initially generated through the renaming tool, but can be modified by the user. (Simply “Pavement Marking” vs. “646-Pavement Marking”)*

4. Once items have been combined onto a summary sheet, format your tables by adding the item names, changing the title, centering, etc. and begin entering quantities into the table (Figure 8.10).

A

B

C

D

E

F

G

H

I

J

K

L

M

N

O

P

Q

R

S

T

U

V

W

X

Y

Z

1

2

3

4

5

6

7

8

9

10

11

12

13

14

15

16

17

18

19

20

21

22

23

24

25

26

27

28

29

30

CONDUIT AND WIRE

CATEGORY

STATION

TO

STATION

LINEAR DISTANCE LF

652.0225 SCHEDULE 40 2-INCH LF

652.0235 SCHEDULE 40 3-INCH LF

652.0325 SCHEDULE 80 2-INCH LF

652.0335 SCHEDULE 80 3-INCH LF

655.0610 12 AWG LF

655.0620 8 AWG LF

655.0625 6 AWG LF

655.0630 4 AWG LF

REMARKS

0010

240+80, 57' LT

-

HH1

215

-

215

-

-

225

-

-

-

1-3"

HH2-EX

-

HH1-EX

35

-

-

35

-

-

45

-

135

1 #8; ADD 5' EACH END

HH1-EX

-

B1

165

165

-

-

-

-

175

-

525

-

B1

-

B2

165

165

-

-

-

-

175

-

525

-

B2

-

B3

165

165

-

-

-

-

175

-

525

-

HH1

-

HH2

445

-

445

-

-

455

-

-

-

1-3"

HH2

-

HH7

490

-

450

-

-

1,000

-

-

-

2-3"

B3

-

HH6

520

255

-

-

-

530

-

-

-

1-2"

HH6

-

HH11

210

170

-

40

-

-

220

660

-

1-2"

HH7

-

HH11

200

-

160

-

40

210

-

-

-

1-3"

TOTAL 0010

920

1,055

75

40

2,195

790

660

1,710

0020

454+70 BL, 9' LT

-

HH3

92

92

-

-

-

100

-

-

-

1-2"

HH3

-

HH4

35

35

-

-

-

-

45

90

-

1-2"

HH4

-

B4

150

150

-

-

-

-

160

320

-

2 #6; ADD 5' EACH END

B4

-

HH6

120

120

-

-

-

-

130

390

-

1-2"

HH5

-

HH11

345

-

305

-

40

-

-

-

1-3" MUFN

HH5

-

453+21 BL, 15' RT

45

-

45

-

-

-

-

-

-

1-3" MUFN

HH11

-

254+18, 29' LT

5

-

5

-

-

-

-

-

1-3" MUFN

TOTAL 0020

397

355

0

40

100

335

800

0

PROJECT TOTAL

1317

1410

75

80

2295

1125

1460

1710

646-Pavement Marking

652-Conduit

652-Conduit and Wire

SP ...

</

Figure 8.10 Example of formatted table to be displayed on MQ Plan Sheets.

To add a missing category total to the existing MQ sheet, see section [6.1 Add Categories](#).



## 9. Deleting Bid Items and MQ sheets

The **Remove Bid Item** command (Figure 9.1) is used to delete both a bid item from one or more MQ sheets, as well as delete the actual MQ sheet if it only contained the one bid item on it. At this time, Q2P is unable to delete an entire summary sheet and each item on that summary sheet must be removed one by one.

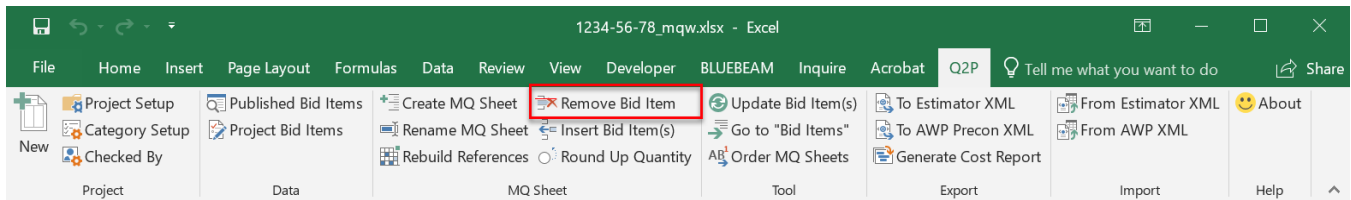


Figure 9.1 “Remove Bid Item” command.



*Before deleting a bid item, it is good practice to either save a copy of the Q2P workbook, or to copy the appropriate rows/columns of data back to another worksheet or workbook so that data is not lost if it ever needs to be retrieved.*



Do not delete MQ sheets using basic Excel functions (i.e., delete a worksheet by right-clicking the worksheet tab and selecting delete or by using Home [tab] > Cells [panel] > Delete [drop-down] > Delete Sheets). Always use Q2P commands as using basic Excel methods for this action will cause problems in Q2P.

1. From an active MQ sheet, select **Q2P > MQ Sheet > Remove Bid Item** to bring up the “Remove Bid Item” dialog box (Figure 8.2).

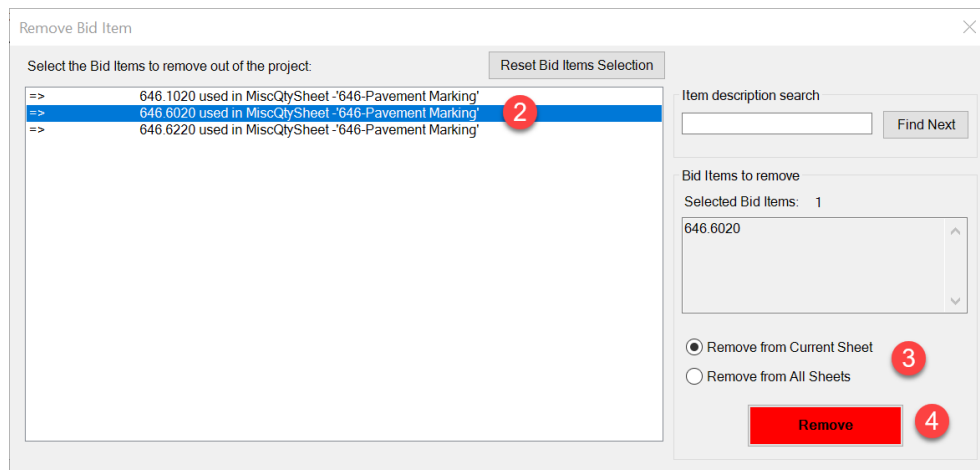


Figure 9.2 “Remove Bid Item” dialog box.

2. Select the bid item you want to delete from the MQ sheet. You can only select one bid item at a time.
3. Select whether to delete it from the current sheet or from all the sheets it is included in.
4. Select “Remove” to complete the command and to see the resulting sheet (Figure 8.3).

	A	E	C	D	E	F	G	H	I	J	K	L	M
1	Pavement Marking												
2													
3													
4													
5													
6													
7	CATEGORY	STATION	TO	STATION	LOCATION	646.1020 Marking Line Epoxy 4-Inch LF	646.6220 Marking Yield Line Epoxy 18-Inch EACH	REMARKS					
8	0010	200+00	-	200+50	LT & RT	100	-						
9	0010	200+50	-	200+60	LT & RT	-	80						
10	0010	201+50	-	201+60	LT & RT	-	-						
11	0010	201+60	-	211+60	RT	1,000	-						
12													
13	TOTAL 0010					1,100	80						
14													
15													
16													

Bid Items

203.0200.01

415.115 ...

⊕

Figure 9.3 Summary sheet with bid item 646.6020 removed.

✂✂ *If the removed bid item was the sole bid item on the MQ sheet, the associated MQ sheet would also be deleted from the workbook. This would also be reflected on the main “Bid Items” worksheet where the removed bid item would no longer appear within the list of bid items.*

## 10. Entering and Computing Quantities

Once all the miscellaneous quantity sheets (MQ sheets) and summary sheets have been inserted into Q2P, enter the quantity information. Use the space to the right of the “REMARKS” column to calculate quantities as needed.



Do not rename or delete the “Bid Items” worksheet, and never enter quantities on the main “Bid Items” worksheet. Always enter the quantities on the MQ sheets. If quantities are entered in the “Bid Items” worksheet and the **Update Bid Item(s)** command is run, all the manual entries will be lost and replaced with the linked total on the associated MQ sheet or summary sheet.

### 10.1 Important Formatting Rules

You can use simple Excel functions to format the rows, columns, and cells to display the data as it will be shown in the construction plan miscellaneous quantity sheets, but it is important to maintain some spatial relationships between certain cells. Before you start heavily formatting, read the following sections for important rules to follow.

#### 10.1.1 “Total 00X0” Cell

The “TOTAL 00X0” text must contain that exact text content and format (i.e. TOTAL 0010, TOTAL 0020, etc.). Changing it to “TOTAL 10,” for example, will cause errors (e.g. the code will not recognize that category to define). Q2P creates the Excel cell **Name** and a **SUM** based on this spatial relationship and that **Name** is how the quantity is referenced in various reports, outputs, and the main “Bid Items” worksheet (Figure 10.1).

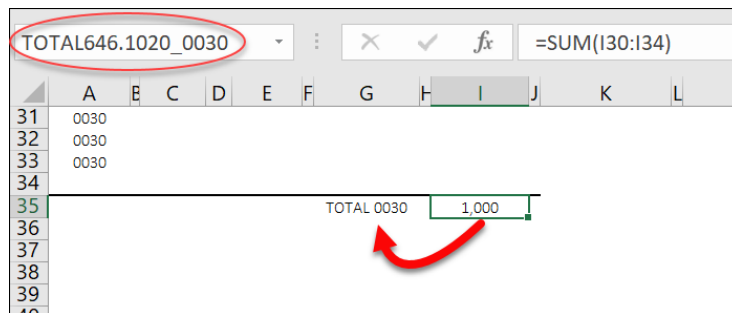


Figure 10.1 Source of bid item category sum **Name**.

If these **Names** or links are inadvertently deleted or otherwise corrupted, running **Q2P > MQ Sheet > Rebuild References** and **Q2P > Tool > Update Bid Item(s)** (Figure 10.2) will recreate the links (for only the categories included in the list on the bottom of the “Bid Items” worksheet). The category “00X0” text listed in column A is optional text for the miscellaneous quantity sheets and does not affect calculations.

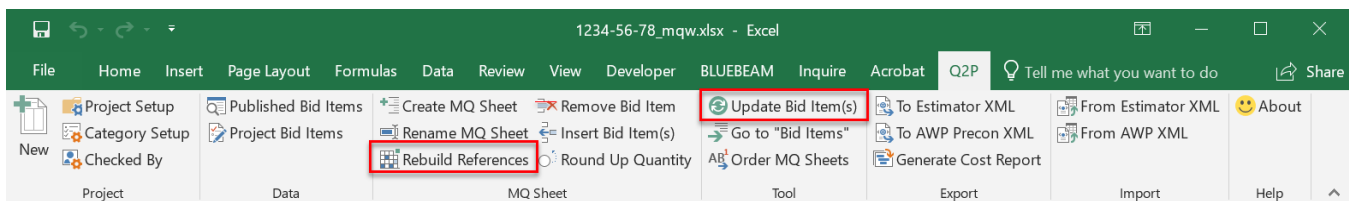


Figure 10.2 “Rebuild References” and “Update Bid Item(s)” commands.

Σ\* *Q2P utilizes (=SUM) to create the category totals, and this function will only add numbers. If a unit is included in the same cell as the quantity (e.g. “4887 CY” or “33 FT”) instead of “4887” or “33”), that quantity will be ignored. Enter stations as the whole number (without the “+”) to be able to use them in calculations.*

### 10.1.2 Multiple Categories

If multiple categories are used for the item, then a “PROJECT TOTAL” must also be shown on the plan sheet table (Figure 10.3). This is either automatically generated if an MQ sheet is created with multiple categories, or manually created if a category is added to a sheet via the workflow in [6.1 Add Categories](#).

	A	B	C	D	E	F	G	H	I	J	K	L	M	N	O	P	Q	R
1																		
2																		
3																		
4																		
5																		
6																		
7																		
8																		
9																		
10																		
11																		
12																		
13																		
14																		
15																		
16																		
17																		
18																		
19																		
20																		
21																		
22																		
23																		
24																		
25																		
26																		
27																		
28																		

CATEGORY	STATION	TO	STATION	LOCATION	Tack Coat GAL	HMA Pavement 3 MT 58-28 S** TON	HMA Pavement 4 MT 58-28 H** TON	Asphaltic Surface TON	REMARKS
0010	10+00 BP	-	12+665 BP	RT	-	-	-	51	-
	240+55	-	247+74	LT & RT	213	775	477	-	-
	242+61	-	243+26	LT	-	-	-	10	PRIVATE BIKE PATH
	250+30	-	254+40	LT & RT	120	436	268	-	-
	251+55	-	251+75	LT	-	-	-	-	-
	252+93	-	253+19	LT	-	-	-	7	DRIVEWAY
	TOTAL 0010				333	1,211	745	68	
0030	450+89 BL	-	451+47 BL	RT	-	-	-	28	PARKING LOT
		-							
	TOTAL 0030				0	0	0	28	
	PROJECT TOTAL				333	1211	745	96	

PLACE THE 5" HMA PAVEMENT IN TWO LAYERS, A 3.25" LOWER LAYER AND A 2" UPPER LAYER  
 \*BASED ON 0.05 GAL/SY APPLICATION RATE  
 \*\*BASED ON 112 LBS/IN/SY

Figure 10.3 “Project Total” on a sheet with multiple categories.

## 10.2 Rounding

It is important to properly round the results of a formula. If cell formatting is used instead, then it is possible that when summed on paper, the individual quantities will not add up to the total.

	A	B	C	D	E	F	G	H
1	100.00	3.00		33.33	=A1/B1		34.00	=ROUNDUP(A1/B1,0)
2	100.00	3.00		33.33	=A2/B2		34.00	=ROUNDUP(A2/B2,0)
3	100.00	3.00		33.33	=A3/B3		34.00	=ROUNDUP(A3/B3,0)
4				100.00	=SUM(D1:D3)		102.00	=SUM(G1:G3)
5								
6	All cells formatted as Category: Number; Decimal places:2							

Figure 10.4 Example of how ROUNDUP makes formula results add up correctly on paper.

For example, format the cell for locating new passing zones and permanent signing to always show two decimals. See [FDM 19-5-3.3.3 Rounding Quantities](#) for guidance on rounding quantities.

**Q2P > MQ Sheet > Round Up Quantity** (Figure 10.5) will round up the selected quantity to the next integer.

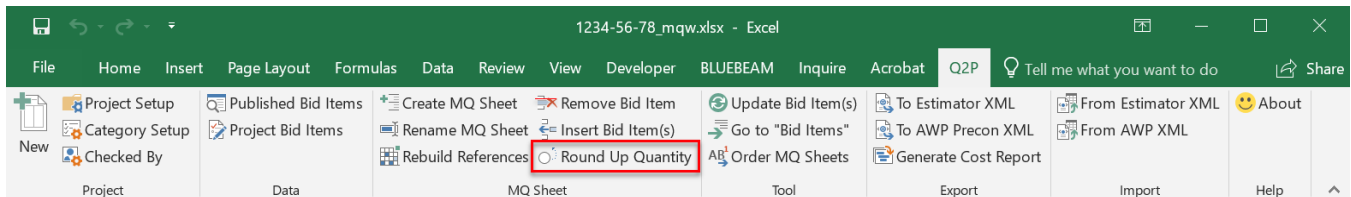




Figure 10.5 "Round Up Quantity" command.

 Note that there is no way to quickly undo this command, so this should be run when quantities are near finalized. To undo, users must activate the cell and manually remove the =ROUNDUP(#,0) formula.

 Do not round category totals. Only the actual data rows should be rounded. This is done to ensure that the category totals directly sum up the rounded totals and those numbers match the totals that are summed up on paper by contractors.



## 11. Establishing Unit Prices

Unit prices are entered on the “Bid Items” worksheet and are always entered into Q2P as present-day costs without inflation. Unit prices and quantities are also verified at all Life Cycle changes and PMP phase changes.

Commonly used sources for item prices include: AASHTOWare Project Estimator™; comparable, nearby and recent projects (via Bid Express® or WisDOT bid tab data); averages from WisDOT Central Office Structures; and WisDOT Regional Technical Services staff for pavement pricing trends. More details can be found in the WisDOT [Facilities Development Manual 19-5-5 Construction Estimates](#). Bid item average price is not appropriate to use at PS&E, but can be acceptable earlier in design.

 *Be aware of items that have a Pre-Established Price such as those found in the [Pre-Established Price](#) section of the AWP Knowledge Base.*

---



Do not change the prices of bid items that have pre-established prices. These are typically incentive, on-the-job training, and SPV items (with DOL or HRS units). Enter prices to the nearest cent. The SPV.0055 and SPV.0075 items are normally pre-established price items, but can be bid normally depending on the item details. Pay special attention to these two items.

**Always update the date in Q2P to reflect quantity and/or unit prices revisions.**

### 11.1 Exporting from Q2P into AASHTOWare Project Estimator™

1. Select **Q2P > Export > To Estimator XML** (Figure 11.1). This command will bring up the “Export as Estimator XML file” dialog box (Figure 11.2).

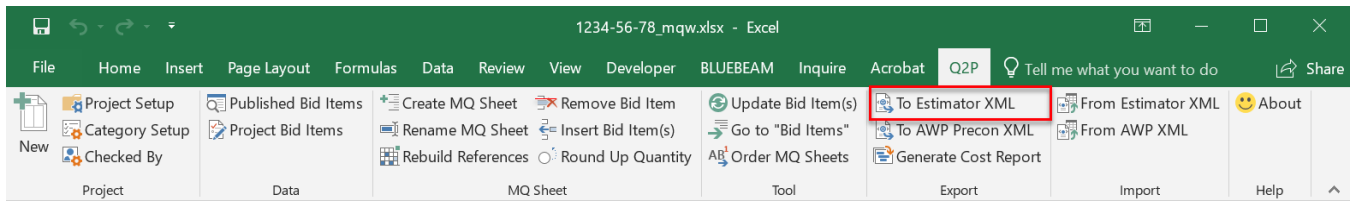


Figure 11.1 Importing Q2P into Estimator help.

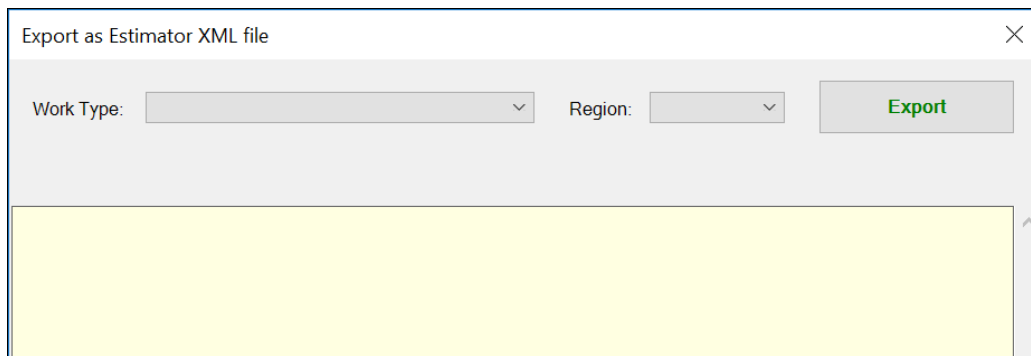


Figure 11.2 “Export as Estimator XML file” dialog box.

2. Enter the **Work Type** and **Region**, then select “Export” to create the XML.

***Σ\*** This command is used to transfer items and quantities into Estimator for obtaining the bid regression prices. It is NOT used to create a complete Estimator file for use with AWP Preconstruction. As such, all quantities will be imported into Estimator under one category (0010).*

3. Once the import file is created, save the XML named with the **XXXX-XX-XXToEstimator.xml** format in your project folder, or use the default path as shown in Figure 11.3.

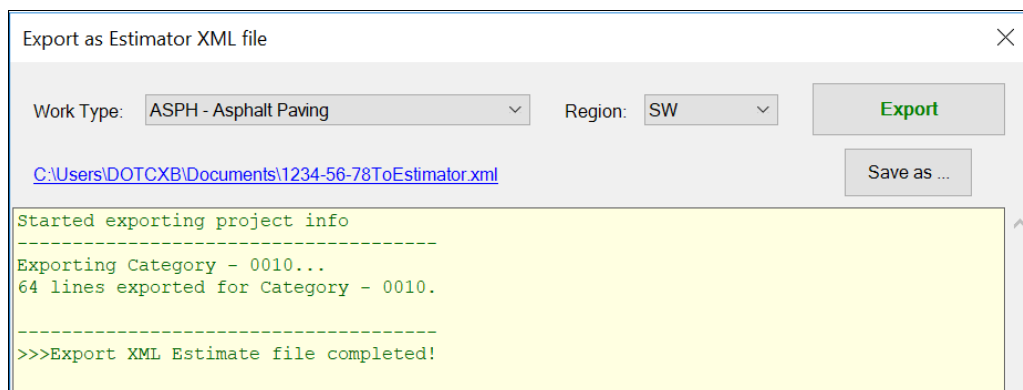


Figure 11.3 “Export as Estimator XML file” dialog box after XML creation.

4. Launch Estimator and follow the instructions below:
  - a. **File > Import File**
  - b. Navigate to exported XML (**XXXX-XX-XXToEstimator.xml**) and select “Open.”
5. Verify the project total in Estimator matches the construction cost total in Q2P.
6. Select and highlight the estimate total (**XXXX-XX-XX - \$X.XX**).
7. To use the bid regression/average prices in Estimator, select **Edit > Update Price Information: Restart**.
8. Enter **Work Type, Season, County, etc.**

## 11.2 Important Estimator Information

After restarting an estimate, most items will have a bid regression-based price, but some items will have a \$0.00 ad hoc price, and SPV items will receive a bid regression/average price that is completely inappropriate because the item details are unknown to Estimator. Look out for these prices.

*Typically, users should not be relying on bid regression prices for any item that requires a supplemental description as by definition they are unique and cannot be bid under a “standard” bid item, but those prices can be a good start for standard bid items or reassurance for a price, especially early in the project lifecycle.*

5	ITEM DESCRIPTION	QUANTITY	UNIT	UNIT PRICE	COST
465.0105	Asphaltic Surface	500 TON		\$95.00	\$47,500.00
465.0110	Asphaltic Surface Patching	100 TON		\$95.00	\$9,500.00
465.0120	Asphaltic Surface Driveways and Field Entrances	200 TON		\$95.00	\$19,000.00
506.7050.S.01	Removing Bearings (structure) (01. B-4-26)	11 EACH		\$2,004.01	\$22,044.11
520.8700	Cleaning Culvert Pipes	8 EACH		\$230.00	\$1,840.00

Figure 11.4 Item with supplemental description.

*Estimator will also show blank item descriptions for item numbers that are not in the catalog, therefore the **To Estimator XML** tool in Q2P can be used to check older Q2P files for items that may have been retired since their initial selection.*

It is recommended that you save your file prior to making the export to Estimator. Also, none of the data in Estimator has a live link to Q2P, so the process must be repeated with each quantity or item change.

### 11.3 Importing from AASHTOWare Project Estimator™ into Q2P

1. In Estimator, select **File > Export Estimate File** and name the file **XXXX-XX-XXToQ2P.xml** and save to your project folder. Do not edit this file.
2. In Q2P, select **Q2P > Import > From Estimator XML** (Figure 11.5) to bring up the “Import Estimator XML file” dialog box (Figure 10.6).



This command will replace any existing notes, data, etc. that is currently in column K on the “Bid Items” worksheet. Before running this command, verify column K is empty.

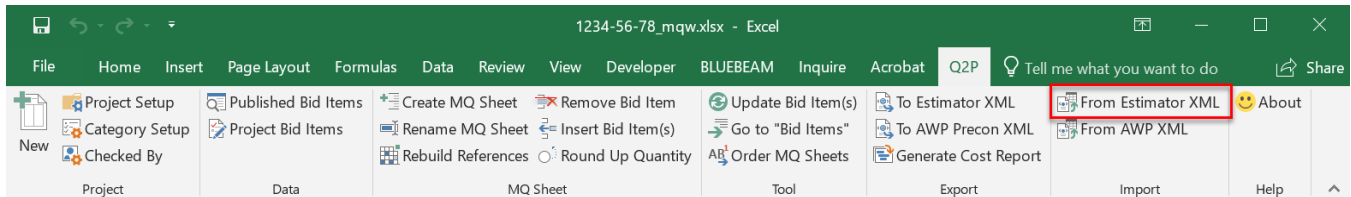


Figure 11.5 “From Estimator XML” command.

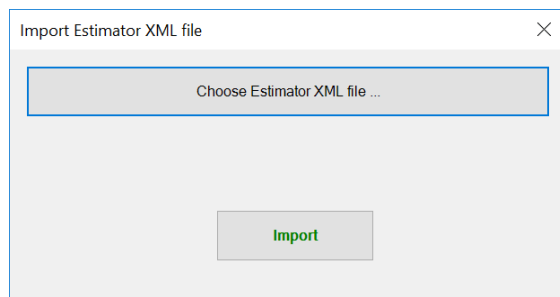


Figure 11.6 “Import Estimator XML file” dialog box.

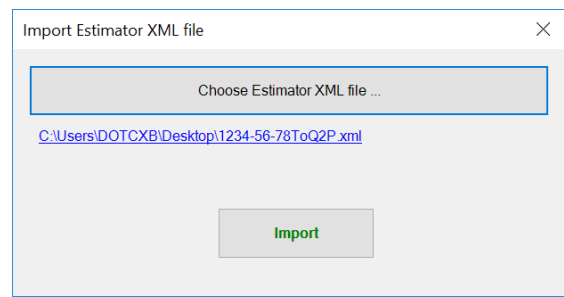


Figure 11.7 File path of selected XML file (typically in project folder).

3. Select “Choose Estimator XML file...” to navigate to your saved file and select “Open.”
4. Confirm the file, select “Import” (Figure 11.7), then select “OK” on the next window (Figure 11.8).

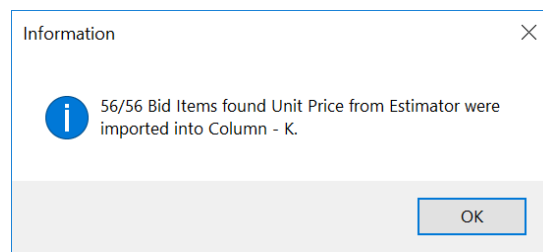


Figure 11.8 “From Estimator XML” command.

5. Rename the column K heading to something like the date of the Estimator run. Otherwise, in the future, that data might be mistakenly used when transferring data to/from Estimator, instead of the current Q2P unit prices.

### 11.4 Copying Unit Prices

1. From the “Bid Items” worksheet, select the first cell down from K14 (i.e. the first unit price from Estimator) and use **Ctrl + Shift + Down Arrow** to select the range.



If there are any blank cells within the selected column, this command will only select the data up to that first blank cell. You can continue to hit the Down Arrow until all data is selected.

2. Use **Ctrl + C** to copy the prices in column K.
3. Select the first cell with a price in the Q2P unit price column F.
4. **Right-click > Paste Values** (Figure 11.9).

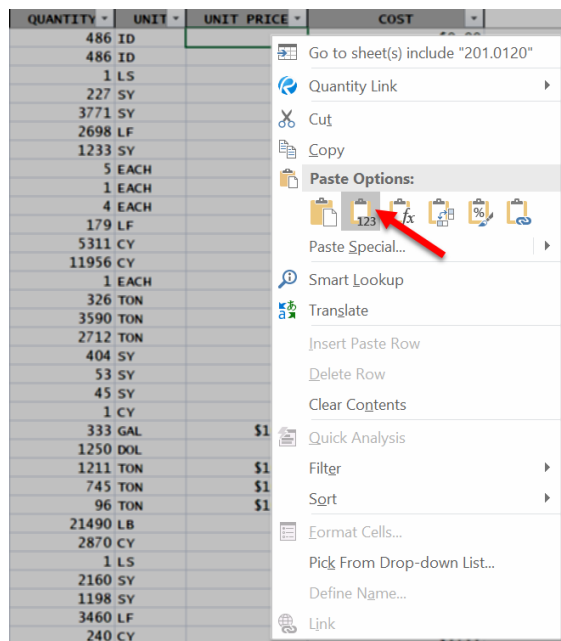


Figure 11.9 “Paste Values” command.

QUANTITY	UNIT	UNIT PRICE	COST
486	ID	\$15.93	\$7,743.44
486	ID	\$6.98	\$3,389.85
1	LS	\$0.00	\$0.00
227	SY	\$9.91	\$2,249.57
3771	SY	\$3.93	\$14,831.34
2698	LF	\$3.61	\$9,726.29
1233	SY	\$6.27	\$7,729.68
5	EACH	\$257.44	\$1,287.21
1	EACH	\$297.82	\$297.82
4	EACH	\$347.97	\$1,391.88
179	LF	\$0.00	\$0.00
5311	CY	\$10.06	\$53,444.59
11956	CY	\$7.85	\$93,902.42
1	EACH	\$0.00	\$0.00
326	TON	\$23.10	\$7,529.95
3590	TON	\$14.49	\$52,026.28
2712	TON	\$12.69	\$34,415.28
404	SY	\$176.49	\$71,301.15
53	SY	\$54.61	\$2,894.22
45	SY	\$50.10	\$2,254.32
1	CY	\$626.16	\$626.16
333	GAL	\$4.37	\$1,456.54
1250	DOL	\$1.00	\$1,250.00
1211	TON	\$67.94	\$82,276.55
745	TON	\$71.93	\$53,588.60
96	TON	\$127.28	\$12,218.50
21490	LB	\$0.09	\$1,826.65
2870	CY	\$581.23	\$1,668,138.71
1	LS	\$0.00	\$0.00
2160	SY	\$2.30	\$4,959.36
1198	SY	\$4.84	\$5,803.11
3460	LF	\$204.78	\$707,161.72
240	CY	\$846.76	\$203,223.12

Figure 11.10 Estimator prices successfully copied to “Unit Price” column.



If Estimator prices have a price to the thousandths place (e.g. 10.005), copying those prices into the “Unit Price” column will retain those thousandths decimals even though the “Unit Price” column is formatted to show a normal currency format (e.g. \$10.01). Remember to review the unit prices thoroughly prior to creating the **ToPrecon.xml** for uploading into AWP Precon.

## 12. Viewing “80/20 Rule” Items for Documenting Unit Price Sources

WisDOT construction projects typically adhere to the Pareto principle and have 80% of their total contract cost generated by about 20% of the total items. Therefore, it is important to focus on these items the most when creating the engineer’s estimate and then document the basis for the unit price. This documentation will aid others who may work on the project and/or be indispensable when responding to a justification request after project let. The documentation can be as simple as including a note off to the right of Column K in Q2P for the items and should detail the bid item unit price estimate source, such as: nearby, similar projects (IDs); Bid Express; Estimator; regional trends; or a combination of these. Also, state whether or not one bidder was assumed for the project. More information can be found in [FDM 19-5-6 Construction Estimate Documentation](#).

Items that fall outside the 80/20 rule can still end up being “significant items” and therefore require careful consideration and should be documented, especially if they have a history of price fluctuation.

### 12.1 Use of Excel’s Sorting Function



**CAUTION!** Do not use the Excel Sort command on the “Bid Items” worksheet. Instead, highlight and copy the Bid Item list into a new Excel workbook and do any sorting there.

Sort will only automatically expand the selection to data that is contiguous to the original selection. It will not automatically expand the selection when run from an AutoFilter drop-down, even if the data is contiguous. Sort also changes the row number of each line, but only does so within the AutoFilter group and does not extend past column G in Q2P. This means if Sort is used from the filter drop-down, any price information stored off to the right of “Cost” will be out of order relative to the rest of the data. MQ sheets and summary sheets will contain incorrect links as these do not auto-update when using Sort.

**Save your file before sorting and use either of the following workflows in 12.2 or 12.3 to view the “80/20 Rule.”**

## 12.2 Using a Number Filter

1. Save your Q2P project file before sorting.
2. From the “Bid Items” worksheet, select **Review > Changes > Unprotect Sheet** (Figure 12.1).

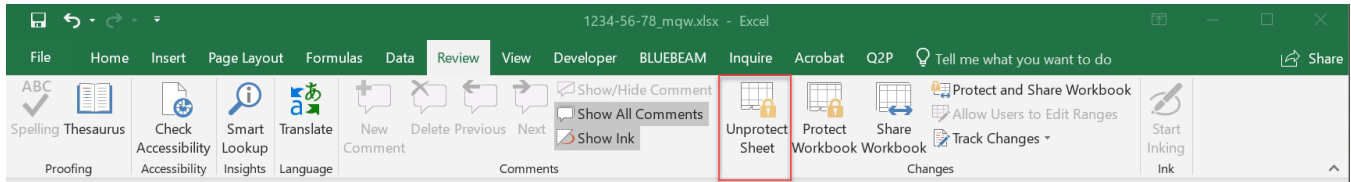


Figure 12.1 “Unprotect Sheet” command.

*Once a protected sheet is unprotected, using any of the Q2P commands will automatically re-protect the sheet.*

3. Use the “Top 10...” Excel Number Filter.

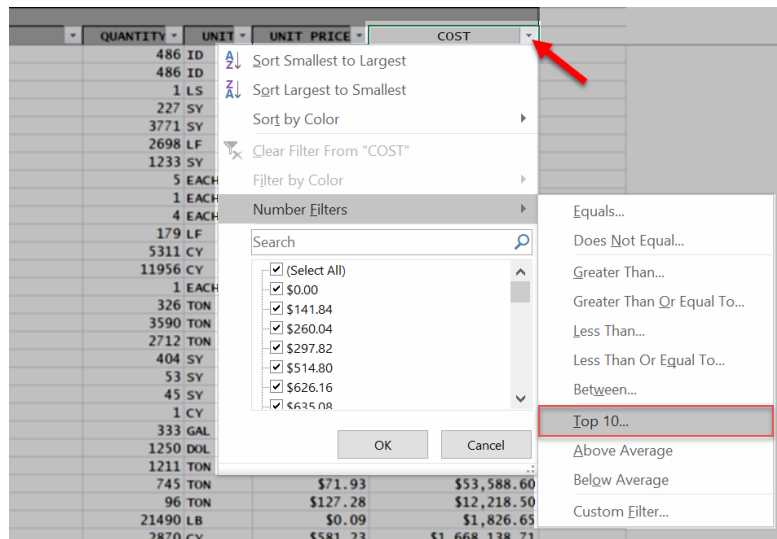


Figure 12.2 Filter drop-down selected in “Cost” cell.

4. Change to Top | 20 | Percent. Select “OK.”

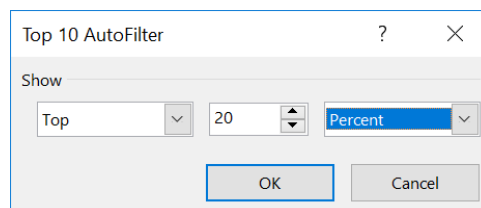


Figure 12.3 Top 10 AutoFilter changed to “Top 20 Percent.”

The “Bid Items” worksheet is now filtered on the top (by value) 20% of the items. For example, if you had 50 bid items in total, this “Top 20% Percent” filter would display the 10 highest cost items

assuming you have no duplicate costs (10/50= 20%). Those items may not equal 80% of your project's total cost and you may want to adjust your percentage amount in the number filter.

12		56	ITEM DESCRIPTION	QUANTITY	UNIT	UNIT PRICE	COST
25	x	205.0100	Excavation Common	5311	CY	\$10.06	\$53,444.59
26	x	208.1100	Select Borrow	11956	CY	\$7.85	\$93,902.42
31	x	415.0410	Concrete Pavement Approach Slab	404	SY	\$176.49	\$71,301.15
37	x	460.6223	HMA Pavement 3 MT 58-28 S	1211	TON	\$67.94	\$82,276.55
38	x	460.6424	HMA Pavement 4 MT 58-28 H	745	TON	\$71.93	\$53,588.60
41	x	502.0100	Concrete Masonry Bridges	2870	CY	\$581.23	\$1,668,138.71
45	x	503.0146	Prestressed Girder Type I 45W-Inch	3460	LF	\$204.38	\$707,161.72
46	x	504.0500	Concrete Masonry Retaining Walls	240	CY	\$846.76	\$203,223.12
47	x	505.0400	Bar Steel Reinforcement HS Structures	71480	LB	\$1.04	\$74,196.24
48	x	505.0600	Bar Steel Reinforcement HS Coated Structures	330905	LB	\$0.96	\$318,661.52
52	x	513.4091	Railing Tubular Screening	624	LF	\$131.07	\$81,789.55
71							
72							
73							
74							
CONSTRUCTION TOTAL:							\$3,677,317.27
DELIVERY COST:							\$551,597.59
TOTAL:							\$4,228,914.87

Figure 12.4 View of "Bid Items" worksheet data that has been filtered by "Top 20 Percent."

- Highlight the group of "COST" total cells to display the total of the filtered Cost. Excel displays the sum of a selection on the bottom right of the status bar. For this example, the top 20% of items is equal to about 93% of the total project construction cost. You may choose to re-filter the list down to less than 20% to display closer to 80% of project cost – just be aware that these are the items that require the most scrutiny when developing the engineer's estimate and require some level of price documentation.

	QUANTITY	UNIT	UNIT PRICE	COST
	11956	CY	\$8.00	\$95,648.00
	3590	TON	\$15.00	\$53,850.00
	404	SY	\$175.00	\$70,700.00
	1211	TON	\$68.00	\$82,348.00
	745	TON	\$72.00	\$53,640.00
	2870	CY	\$580.00	\$1,664,600.00
	3460	LF	\$205.00	\$709,300.00
	240	CY	\$845.00	\$202,800.00
	71480	LB	\$1.00	\$71,480.00
	330905	LB	\$1.00	\$330,905.00
	624	LF	\$131.00	\$81,744.00
CONSTRUCTION TOTAL:				\$3,690,872.00
DELIVERY COST:				\$553,630.80
TOTAL:				\$4,244,502.80

204-Removals | 208-Earthwo ... (+) | Average: \$310,637.73 | Count: 11 | Sum: \$3,417,015.00

Figure 12.5 Using the selection sum feature of Excel.

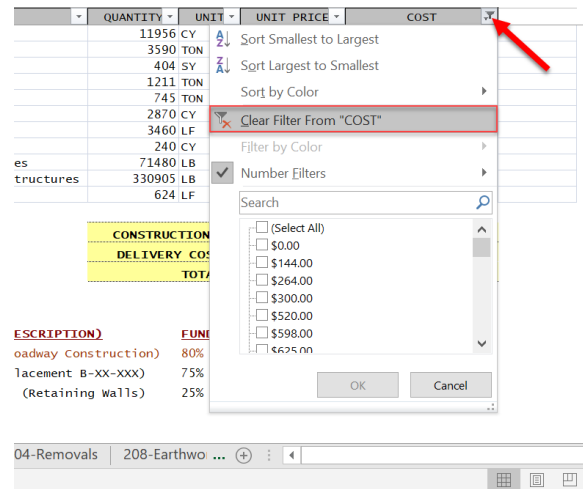


Figure 12.6 Filter drop-down, used to clear the Number Filter.

- Select the filtered cells and use **Home > Font > Text Highlight Color** to highlight your selected "80/20" items to a certain color. This will differentiate your important items from the rest once you remove the number filter.
- Select the filter drop-down in the "Cost" cell again to clear the Number Filter (Figure 12.6).

### 12.3 Using Conditional Formatting

1. Save your Q2P project file before sorting
2. From the “Bid Items” worksheet, select **Review > Changes > Unprotect Sheet** (Figure 12.7).

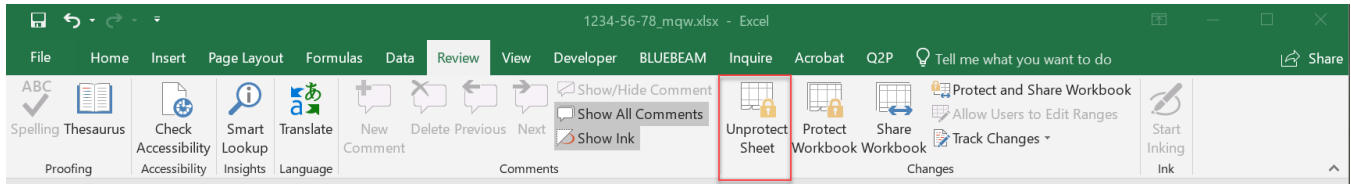


Figure 12.7 “Unprotect Sheet” command.

3. Highlight all the cost cells in **column G** (match the actual range of Costs).
4. Select **HOME > Styles > Conditional Formatting > Top/Bottom Rules > Top 10%...**

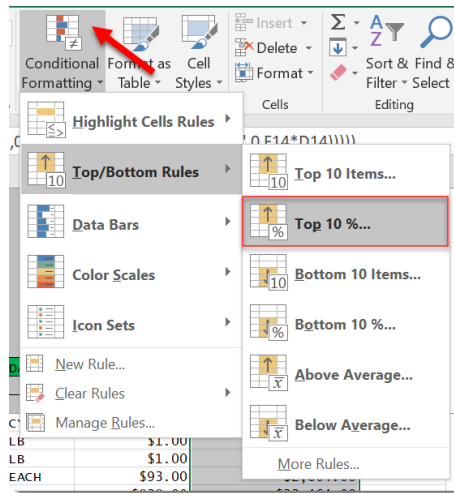


Figure 12.8 Conditional Formatting Excel command.

5. Set the conditional formatting to 20% along with the desired highlighting. Note that this “20%” functions the same way as the number filtering method listed above. You may have to adjust this percentage amount to identify all your 80/20 items.



Figure 12.9 Top 10% Conditional Formatting dialog box.

Now all Costs can be viewed at the same time, with the top 20% items highlighted.

56	ITEM DESCRIPTION	QUANTITY	UNIT	UNIT PRICE	COST
460.6223	HMA Pavement 3 MT 58-28 S	1211	TON	\$68.00	\$82,348.00
460.6424	HMA Pavement 4 MT 58-28 H	745	TON	\$72.00	\$53,640.00
465.0105	Asphaltic Surface	96	TON	\$125.00	\$12,000.00
501.1000.S	Ice Hot Weather Concreting	21490	LB	\$0.10	\$2,149.00
502.0100	Concrete Masonry Bridges	2870	CY	\$580.00	\$1,664,600.00
502.3100.01	Expansion Device (structure) (01. B-13-572)	1	LS	\$0.00	\$0.00
502.3200	Protective Surface Treatment	2160	SY	\$2.50	\$5,400.00
502.3210	Pigmented Surface Sealer	1198	SY	\$5.00	\$5,990.00
503.0146	Prestressed Girder Type I 45W-Inch	3460	LF	\$205.00	\$709,300.00
504.0500	Concrete Masonry Retaining Walls	240	CY	\$845.00	\$202,800.00
505.0400	Bar Steel Reinforcement HS Structures	71480	LB	\$1.00	\$71,480.00
505.0600	Bar Steel Reinforcement HS Coated Structures	330905	LB	\$1.00	\$330,905.00
506.2605	Bearing Pads Elastomeric Non-Laminated	28	EACH	\$93.00	\$2,604.00
506.2610	Bearing Pads Elastomeric Laminated	28	EACH	\$838.00	\$23,464.00

Figure 12.10 Bid items with the higher Cost items highlighted as they are included in the top 20%.

The formatted cells will change as new items are added to the project, or existing prices are revised.

56	ITEM DESCRIPTION	QUANTITY	UNIT	UNIT PRICE	COST
460.6223	HMA Pavement 3 MT 58-28 S	1211	TON	\$40.00	\$48,440.00
460.6424	HMA Pavement 4 MT 58-28 H	745	TON	\$72.00	\$53,640.00
465.0105	Asphaltic Surface	96	TON	\$125.00	\$12,000.00
501.1000.S	Ice Hot Weather Concreting	21490	LB	\$0.10	\$2,149.00
502.0100	Concrete Masonry Bridges	2870	CY	\$580.00	\$1,664,600.00
502.3100.01	Expansion Device (structure) (01. B-13-572)	1	LS	\$0.00	\$0.00
502.3200	Protective Surface Treatment	2160	SY	\$2.50	\$5,400.00
502.3210	Pigmented Surface Sealer	1198	SY	\$5.00	\$5,990.00
503.0146	Prestressed Girder Type I 45W-Inch	3460	LF	\$205.00	\$709,300.00
504.0500	Concrete Masonry Retaining Walls	240	CY	\$845.00	\$202,800.00
505.0400	Bar Steel Reinforcement HS Structures	71480	LB	\$1.00	\$71,480.00
505.0600	Bar Steel Reinforcement HS Coated Structures	330905	LB	\$1.00	\$330,905.00
506.2605	Bearing Pads Elastomeric Non-Laminated	28	EACH	\$93.00	\$2,604.00
506.2610	Bearing Pads Elastomeric Laminated	28	EACH	\$838.00	\$23,464.00

Figure 12.11 Bid items with item 460.6223 Cost no longer highlighted as the unit price was revised down.

Use a **Number Filter** to quickly sum these top 20% items to verify that 20% is still the appropriate value to use for delineating the items that total around 80% of project cost. This should be done especially when major changes have occurred to the project estimate.

- To clear Conditional Formatting, use **HOME > Styles > Conditional Formatting > Manage Rules...** while the range is still selected.

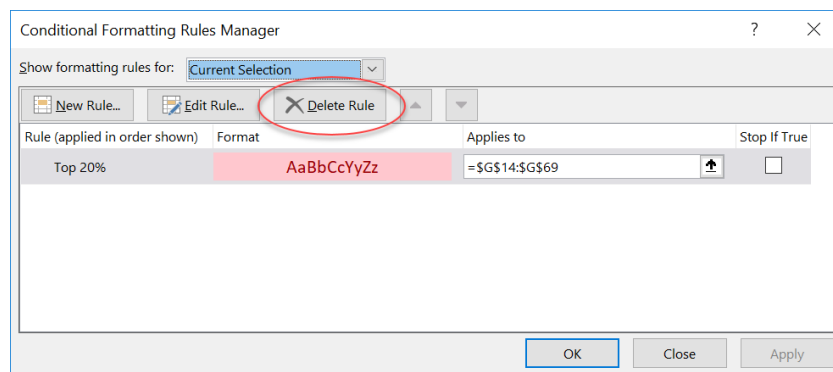


Figure 12.12 Conditional Formatting Rules Manager which allows deletion of set rules.

## 13. Creating the Miscellaneous Quantity Plan Sheets

### 13.1 Setting up the Power Point Slide Template

1. Navigate to the [Q2P web page](#) to access and download the PowerPoint templates for creating the MQ sheets.
2. Open a new Miscellaneous Quantities plan sheet template, titled **PowerPoint MQ Plan Sheet.pptx**. There is also a rotated plan sheet template for use as needed.

**Subscribe** to WisDOT's Q2P distribution list.  
Enter your name and email address in the boxes below and click subscribe.

**Email address (required):**

**Your name (required):**

[subscribe](#)

Additional Resources

[PowerPoint MQ Plan Sheet.pptx](#) (Horizontal sheet template to be used for MQ plan sheets)

[PowerPoint MQ Plan Sheet Rotated.pptx](#) (Vertical sheet template to be used for MQ plan sheets)

[WisDOT Estimating Tools Website](#)

[WisDOT AASHTOWare Project \(AWP\) Knowledge Base](#) (Instructions on creating estimates and using AWP)

Figure 13.1 PowerPoint sheet templates found on Q2P website.

3. Save the PowerPoint sheet working file in the same directory as the project's Q2P workbook working file and name it **030200\_mq.PPTX** or **XXXX-XX-XX\_mq.PPTX**. It should remain there until after PS&E.
4. Fill in the project title block information. This is done by editing the "Slide Master." Go to **VIEW > Master Views > Slide Master**.

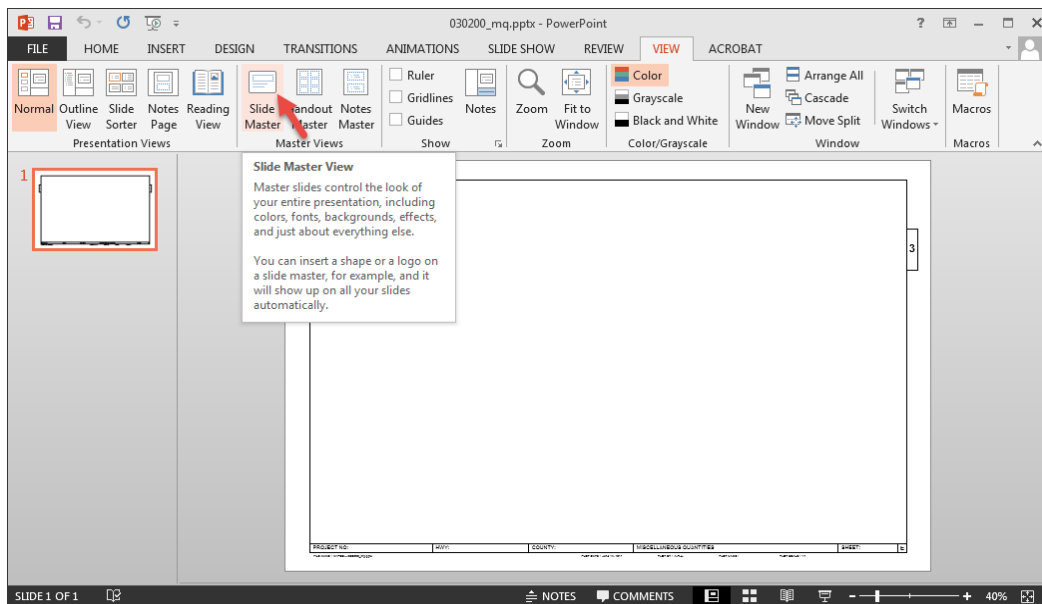


Figure 13.2 Normal View.

Making edits to the “Slide Master” will translate those edits to be used on all sheets.

- Click on the **Slide Master #1** and then edit the text boxes at the bottom of the plan sheet.

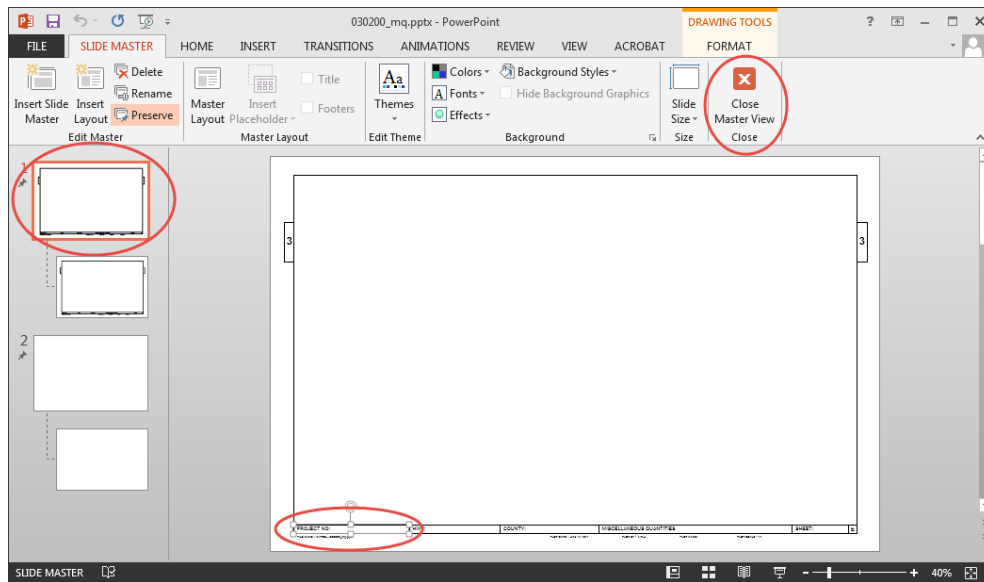


Figure 13.3 Slide Master View.

*Note that there is a second master slide which is blank. This can be used to create a second sheet, if different project information is required within the same PPTX file.*

- When finished, click the “Close Master View” button.
- In **Normal** view, use **HOME > New Slide** to create multiple copies of the slide as needed to accommodate the Q2P miscellaneous quantity data.

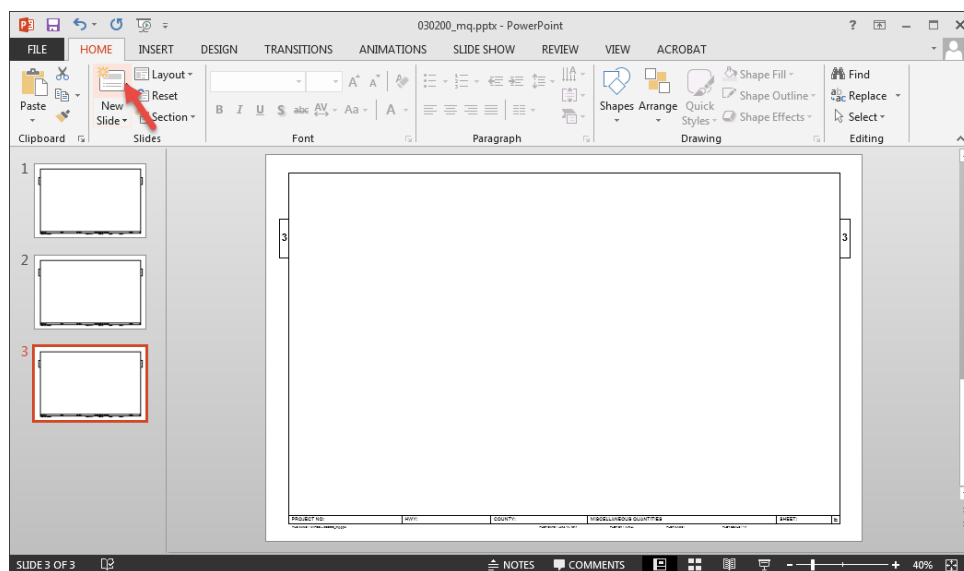


Figure 13.4 PowerPoint New Slide.

### 13.2 Copying Data onto PowerPoint Slide

1. In Q2P, navigate to an MQ sheet and highlight the range of data to be included on the plan sheet.
2. Select **PAGE LAYOUT > Print Area > Set Print Area**.
3. **Right-click < Copy** or select **HOME > Clipboard > Copy** to copy the selection.

*Q2P works best when a Print Area is linked to PowerPoint since this allows users to insert rows and columns and have those changes reflected in PowerPoint. If only a cell range is selected, rows will shift out of view when new ones are inserted into the table. Alternatively, Use **FORMULAS > Defined Names > Define Name**, to break-up sheets that must span two PowerPoint sheets.*

4. NON-LINKED MQ SHEETS – In PowerPoint, **Right-click > Paste Options > Keep Source Formatting**. This method doesn't have any links to potentially break, but will require a manual **Copy + Paste** for every change to any MQ table in your Q2P file.
5. LINKED MQ SHEETS – In PowerPoint, select **HOME > Clipboard panel > Paste Drop-down menu > Paste Special...** and select the "Paste link" radio button. Choose "Microsoft Excel Worksheet Object".

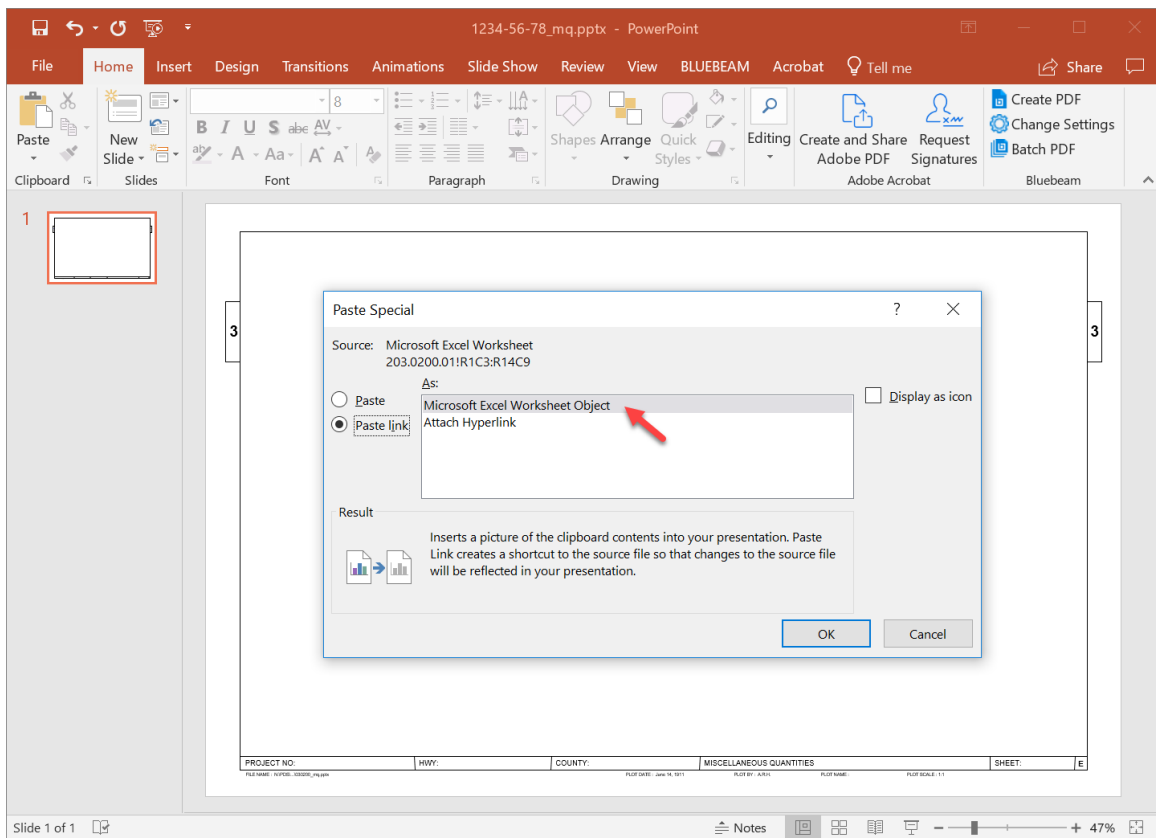


Figure 13.5 Paste Special in PowerPoint.

Make sure the "Display as icon" checkbox is NOT checked.

6. Use the **Right-click > Format Object** to scale to a standard percent for the sheets, or set the insertion point manually if attempting to align multiple items.

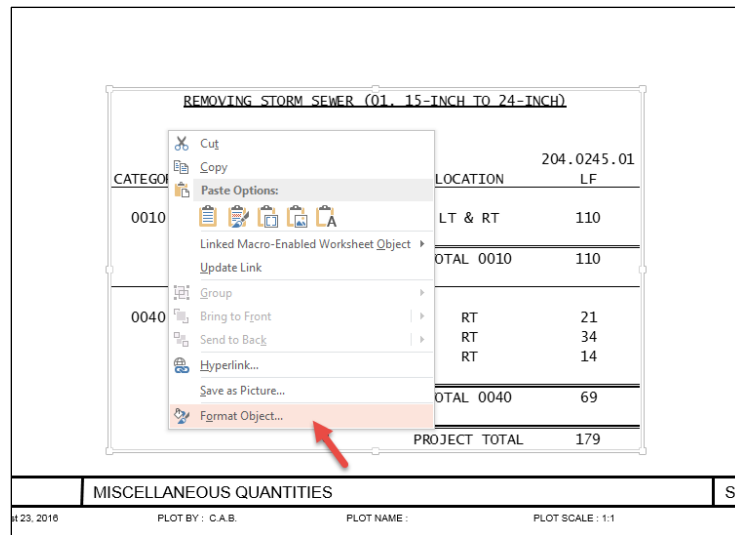


Figure 13.6 Right-Click Menu

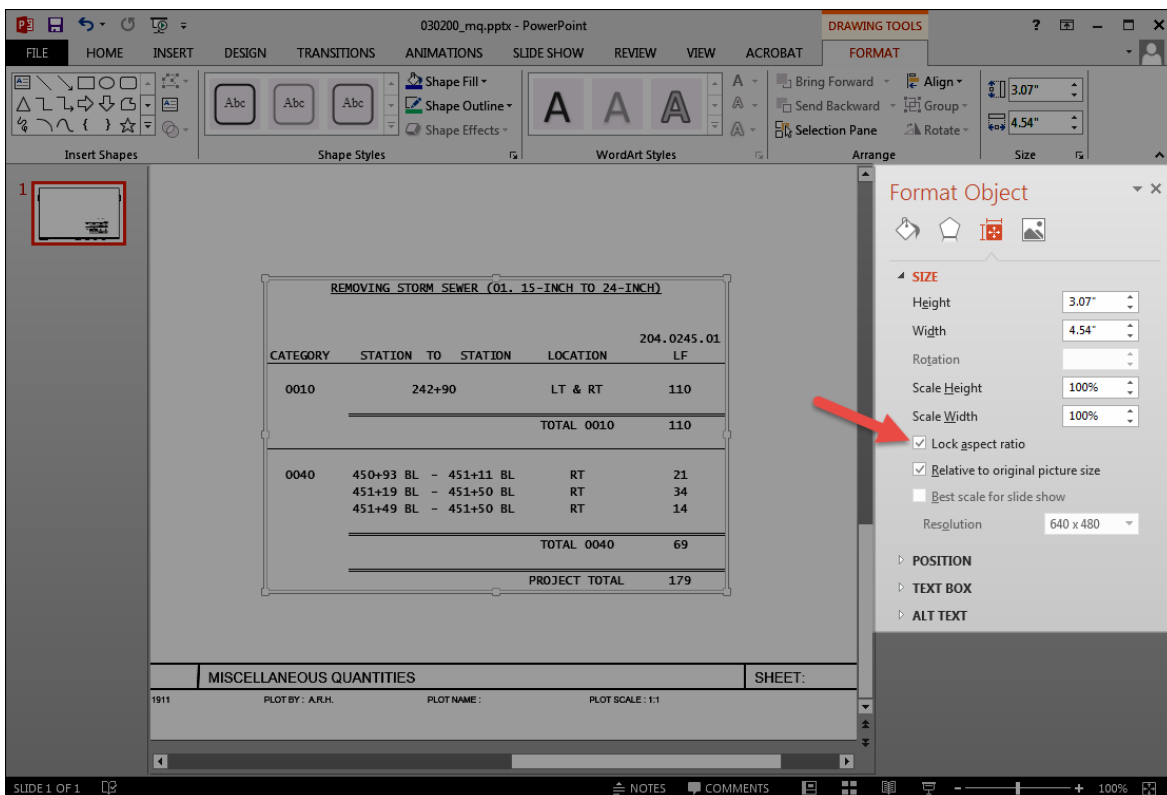


Figure 13.7 Format Object dialog box.

Note that “Lock aspect ratio” needs to be checked.

7. Use the standard PowerPoint tools to create lines (**HOME > Drawing**) to separate items.

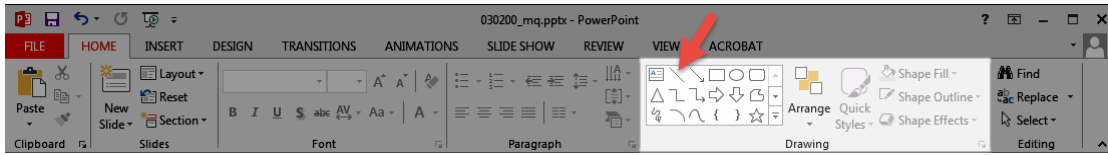


Figure 13.8 Drawing lines in PowerPoint.

*Holding the shift key while creating or lengthening a line will lock in the direction to 90°/180°/270°/360.*

Once miscellaneous quantity sheets are linked to PowerPoint, the Q2P XLS file should not be moved or renamed, as links are not relative, they are absolute. Under the **FILE > Info > Related Documents > Edit Link to Files**, the links may be reviewed for problems and file source locations manually updated for each link, one at a time, if necessary.

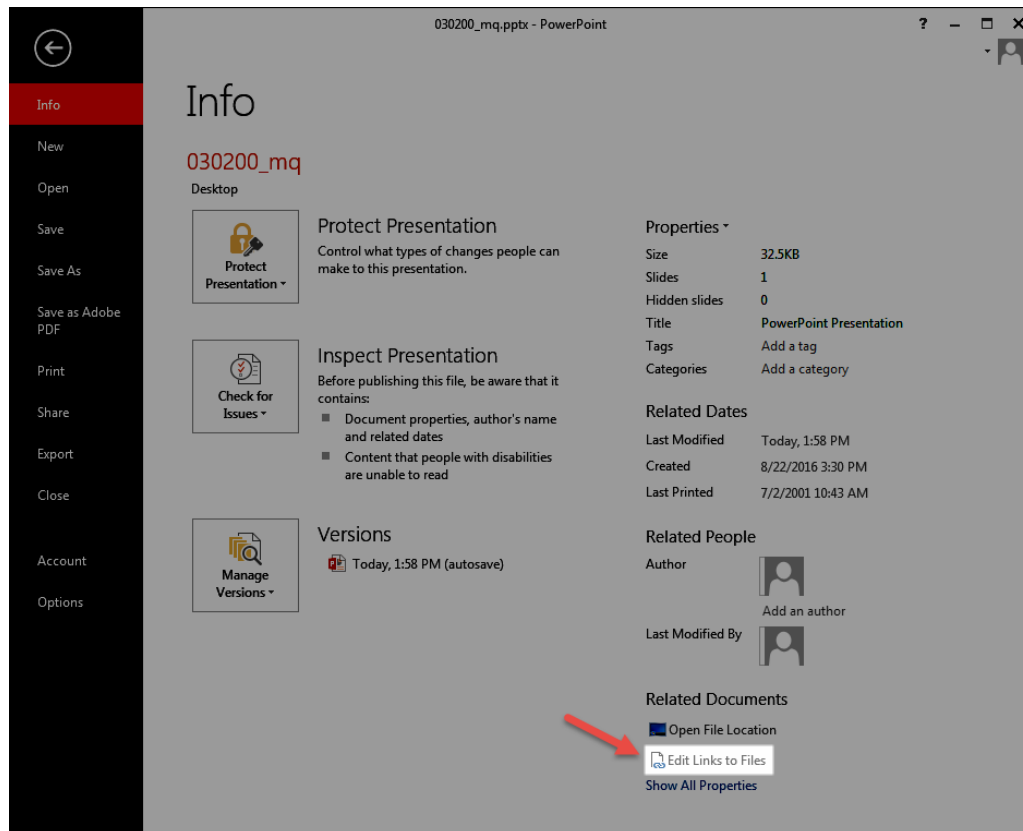


Figure 13.9 Use "Edit Links to Files" to review links between Q2P and PowerPoint.



Always have the associated Q2P workbook open **BEFORE** opening the PowerPoint MQ plan sheets. This will avoid extremely slow processing due to PowerPoint needing to open and close Excel to update every link in the file.

### 13.3 Printing the Miscellaneous Quantity Sheets

The MQ plan sheets must conform to the standards in [FDM 15-1-30](#), *Miscellaneous Quantity Sheet*. Use the following steps to create the PDF file from PowerPoint for the final electronic plan (ePlan).

1. Select **FILE > Print** and set the **Printer** to “Adobe PDF” and verify “All Slides” are to be printed.
2. Click “Printer Properties” to access the Print dialog box.

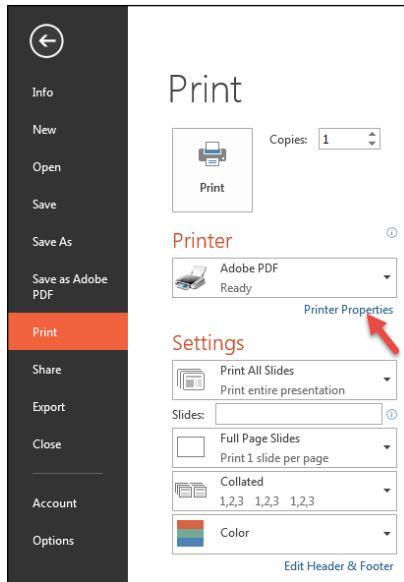


Figure 13.10 Accessing printer properties.

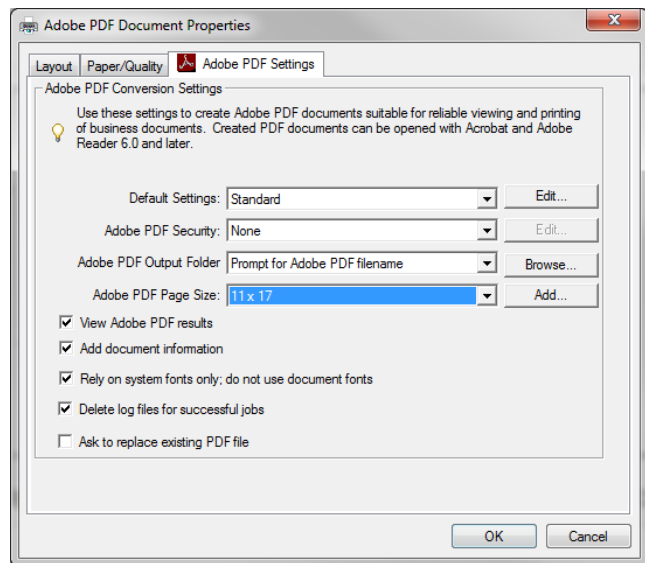


Figure 13.11 Basic Print Settings for Adobe PDF.

3. Set “Adobe PDF Page Size” to **11 x 17**.
4. Change the “Layout” to **Landscape** and hit “OK.”

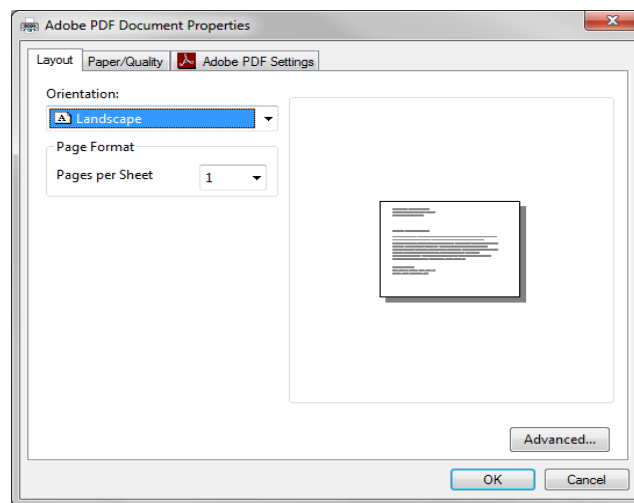


Figure 13.12 Layout changed to Landscape.

5. Select “Print” and save the PDF as **030200\_mq.pdf** in the **SheetsPlan\pdf** folder in the Civil 3D directory

## 14. Print Project Cost Report

The Cost Report is the engineer's estimate, grouped by category.

1. Prior to creating a Cost Report, use **Q2P > Project > Checked By** and enter the appropriate initials and date. This information will appear on the Cost Report footer.
2. Select **Q2P > Export > Generate Cost Report** (Figure 14.1) to generate and print (Figure 14.2) the project cost report which displays the estimate totals by category (Figure 14.3).

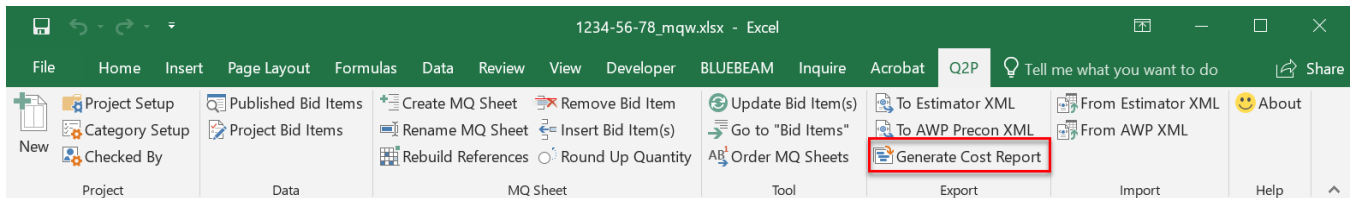


Figure 14.1 "Generate Cost Report" command.

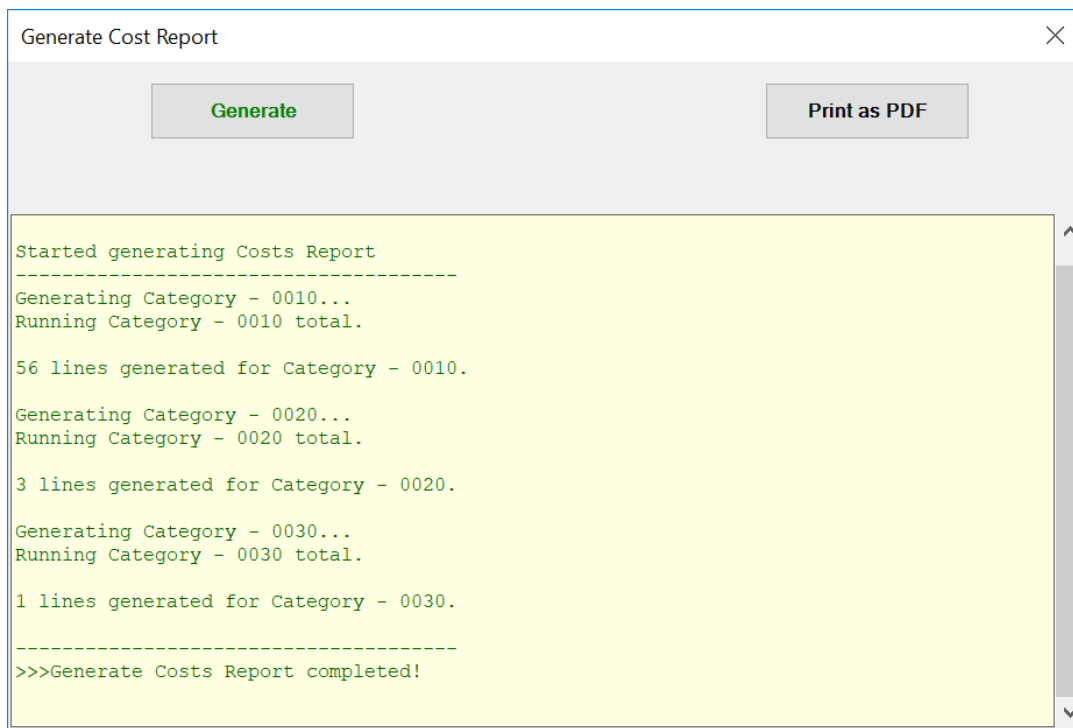


Figure 14.2 Generate Cost Report window after report generation is complete.

6/10/2019 1:15 PM  
File Name: P:\State\STH1\1234-56-08,78\EstQty\1234-56-78\_mqw.xlsx

**ENGINEER'S ESTIMATE / Q2P WORKBOOK**  
PROJECT MANAGER: John Doe

**PRELIMINARY COST**  
 6/10/2019 \$757,175.00

CONST. I.D.: 1234-56-78  
 TITLE: Waukesha - Superior  
 LIMITS: Green Bay to La Crosse  
 HIGHWAY: STH 1  
 COUNTY: Eau Claire  
 PROGRAM CODE: 303 STATE HIGHWAY REHABILITATION  
 CONCEPT CODE: RESURF RESURFACING

NET C/L MILES: 0.00

ITEMS	ITEM DESCRIPTION	QUANTITY	UNIT	UNIT PRICE	COST
<b>CATEGORY 0010 Roadway Construction (80% Federal 20% State)</b>					
201.0105	Clearing	350	STA	\$999.00	\$349,650.00
201.0205	Grubbing	350	STA	\$50.00	\$17,500.00
619.1000	Mobilization	0.25	EACH	\$75,000.00	\$18,750.00
643.5000	Traffic Control	1	EACH	\$5,000.00	\$5,000.00
<b>CATEGORY 0010 TOTAL:</b>					<b>\$390,900.00</b>
<b>CATEGORY 0020 Bridge Overlay (80% Federal 20% State)</b>					
502.0100	Concrete Masonry Bridges	500	CY	\$400.00	\$200,000.00
619.1000	Mobilization	0.25	EACH	\$75,000.00	\$18,750.00
<b>CATEGORY 0020 TOTAL:</b>					<b>\$218,750.00</b>
<b>CATEGORY 0030 Bike/Ped Trail (100% City of Wisconsin Rapids)</b>					
465.0105	Asphaltic Surface	1000	TON	\$100.00	\$100,000.00
619.1000	Mobilization	0.25	EACH	\$75,000.00	\$18,750.00
SPV.0090.01	Special (01. Yarn)	25	LF	\$1.00	\$25.00
<b>CATEGORY 0030 TOTAL:</b>					<b>\$118,775.00</b>
<b>CATEGORY 0040 Sanitary Sewer &amp; Watermain (100% City of Rhinelander)</b>					
619.1000	Mobilization	0.25	EACH	\$75,000.00	\$18,750.00
677.0500.S	Install Video Detection Camera	1	EACH	\$10,000.00	\$10,000.00
<b>CATEGORY 0040 TOTAL:</b>					<b>\$28,750.00</b>

**CONSTRUCTION COST ESTIMATE:** \$757,175.00  
**DELIVERY COST:** 15% \$113,576.25  
**PROJECT TOTAL:** \$870,751.25

Checked By:  
Date: 6/10/2019

1 of 1

Figure 14.3 Q2P Cost Report.

- Save the PDF to your project folder. Alternatively, the main "Bid Items" worksheet can be printed from the standard Excel print dialog to disregard categories and just view the item costs across all categories.



Delete unused category rows (using Excel commands) from the MQ sheets and run **Q2P > Tool > Update Bid Item(s)** to refresh the links to the main "Bid Items" worksheet.

TOTAL203.0200.01_0040							
A	B	C	D	E	F	G	H
1						203.0200.01	
2							
3							
4							
5						203.0200.01	
6						Removing Old Structure	
7						(STA. 248+00)	
8	CATEGORY	STATION	TO	STATION	LOCATION	LS	REMARKS
9	0010		-			1	
10			-				
11			-				
12					TOTAL 0010	1	
13	0020		-				
14			-				
15			-				
16					TOTAL 0020	0	
17							

Figure 14.4 MQ sheet with unused category left in place.

*A miscellaneous quantity sheet must only contain the categories that are required. Do not keep empty CATEGORY 0020, 0030 totals on the MQ sheet (unless intended to be used at a later time).*

 The 0 quantity/cost will NOT appear in either the Cost Report or the upload XML to AWP.

## 15. Creating the Upload File for AASHTOWare Project Preconstruction™



Prior to creating the upload file for AWP Preconstruction, verify all empty categories are deleted from each miscellaneous quantity sheets.

1. Select **Q2P > Export > To AWP Precon XML** (Figure 15.1). This command will bring up the “Export as Estimator XML file” dialog box (Figure 15.2).

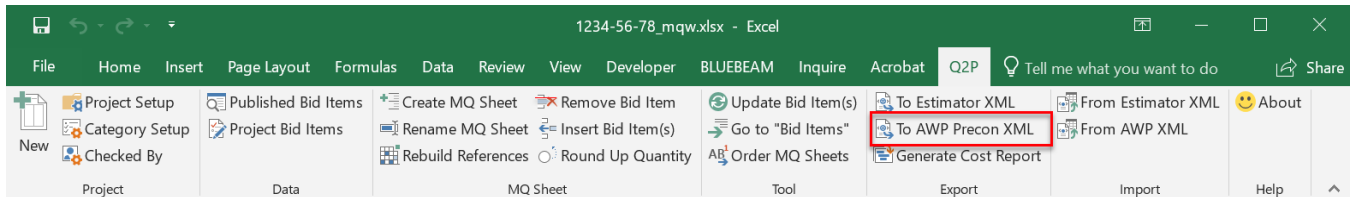


Figure 15.1 “To AWP Precon XML” command.

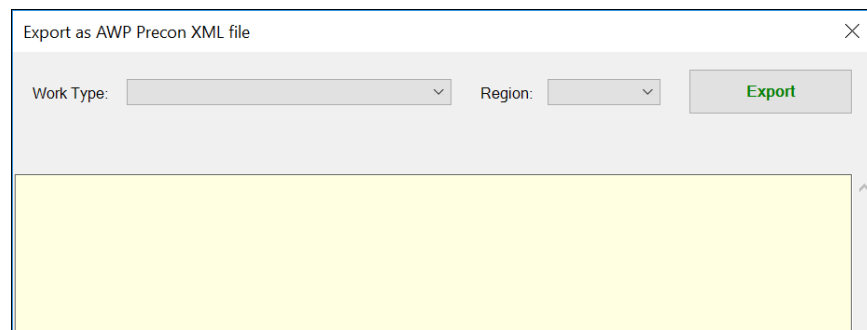


Figure 15.2 “Export as AWP XML file” dialog box.

2. Enter the Work Type and Region, then select “Export” to create the XML.
3. Once the import file is created, save the XML named with the **XXXX-XX-XXToPrecon.xml** format in your project folder, or use the default path as shown in Figure 15.3.

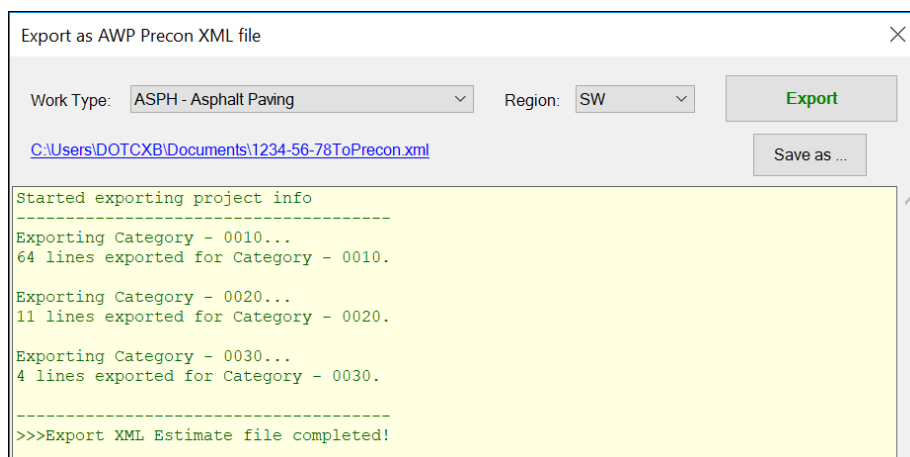


Figure 15.3 “Export as AWP Precon XML file” dialog box after XML creation.



```

<Estimate>
  <EstimateId>2222-22-22</EstimateId>
  <UnitSystem>E</UnitSystem>
  <WorkType>ASPH</WorkType>
  <DistrictNumber>SW</DistrictNumber>
  <Description>NEW LONDON - EVANSVILLE STH 92 to C EVANSVILLE N LIMIT</Description>
  <EstimateGroup>
    <GroupNumber>0010</GroupNumber>
    <Description>0010</Description>
    <EstimateItem>
      <LineNumber>0020</LineNumber>
      <ItemCode>204.0190</ItemCode>
      <Quantity>5.000</Quantity>
      <UnitPrice/>
      <SupplementalDescription/>
    </EstimateItem>
    <EstimateItem>
      <LineNumber>0030</LineNumber>
      <ItemCode>204.0215</ItemCode>
      <Quantity>31.000</Quantity>
      <UnitPrice/>
      <SupplementalDescription/>
    </EstimateItem>
    <EstimateItem>
      <LineNumber>0040</LineNumber>
      <ItemCode>305.0110</ItemCode>
      <Quantity>2757.000</Quantity>
      <UnitPrice/>
      <SupplementalDescription/>
    </EstimateItem>
    <EstimateItem>
      <LineNumber>0050</LineNumber>
      <ItemCode>305.0120</ItemCode>
      <Quantity>4905.000</Quantity>
    </EstimateItem>
  </EstimateGroup>
</Estimate>

```

Figure 15.4 Sample XXXX-XX-XXToPrecon.xml generated by Q2P.

4. Review the **XXXX-XX-XXToPrecon.xml** file (Figure 15.4) for completeness and/or errors prior to uploading into AWP Preconstruction. Pay special attention to the items with supplemental descriptions.

Note how the “Item Description” from Q2P is not actually exported to AWP Preconstruction. Rather, it is populated in AWP Preconstruction from the item number.

## 16. Importing the File into AASHTOWare Project Preconstruction™



Prior to importing the **XXXX-XX-XXToPrecon.xml** into AWP Preconstruction, verify that the Project is properly setup in AWP Preconstruction. This will avoid errors during the upload process.

For instructions on uploading the **XXXX-XX-XXToPrecon.xml** file into AWP Preconstruction, see the [WisDOT AASHTOWare Project™ \(AWP\) Knowledge Base](#). The help documentation refers to the **XXXX-XX-XXToPrecon.xml** file originating from Estimator, but the Q2P version is also a valid source ([Figure 15.3](#)).

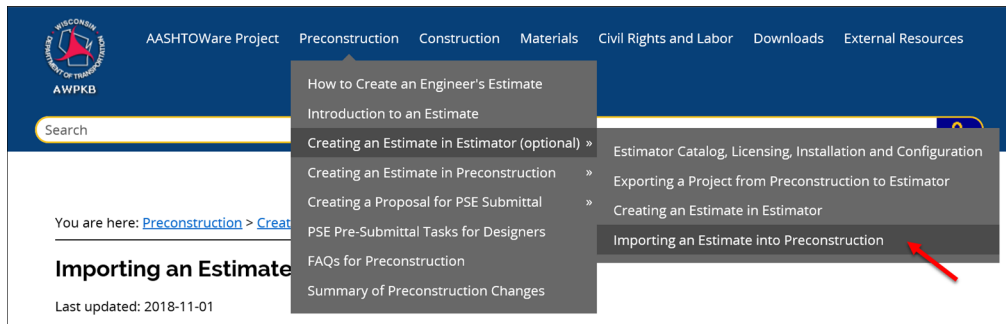


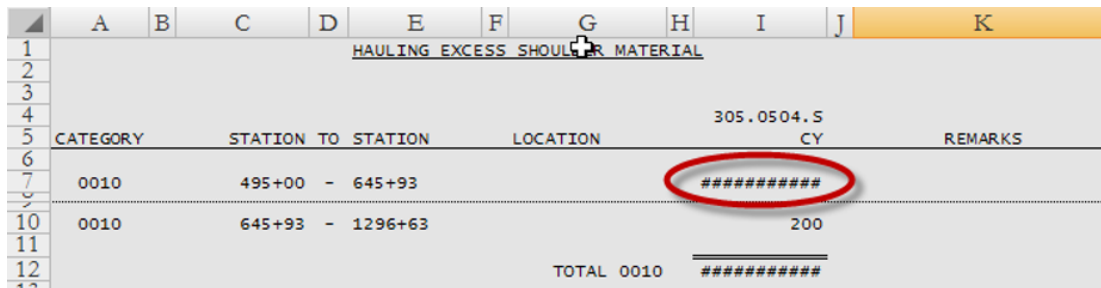
Figure 16.1 Navigation to “Importing an Estimate into Preconstruction.”

## APPENDICES

### Appendix A. Troubleshooting

#### A-1 “#####” Displays in a Cell

When a cell in Excel does not have sufficient width to display the entire number, it will display a cell filled with “#”. Increasing the width of the column will fix the issue.



The screenshot shows an Excel spreadsheet with columns A through K. In column I, row 7, the value '305.0504.5' is truncated, and the cell displays '#####'. A red circle highlights this cell. The spreadsheet contains data for categories, station ranges, and locations, with a total for category 0010 also showing #####.

1	A	B	C	D	E	F	G	H	I	J	K
2											
3											
4											
5									305.0504.5		
6											
7									#####		
8											
9											
10									200		
11											
12											
13											

Figure A-1.1 Insufficient column width.

Double-clicking in the area between columns headings (columns I and J in our example) will automatically change the width to an amount that will allow all content to display properly. Excel will do this when the mouse cursor has changed to the Excel “resize column width” cursor.

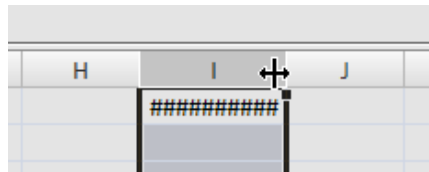


Figure A-1.2 Resize column width cursor.

You can also right-click on the column name (I) and select “Column Width...” to change the width to a set larger value.

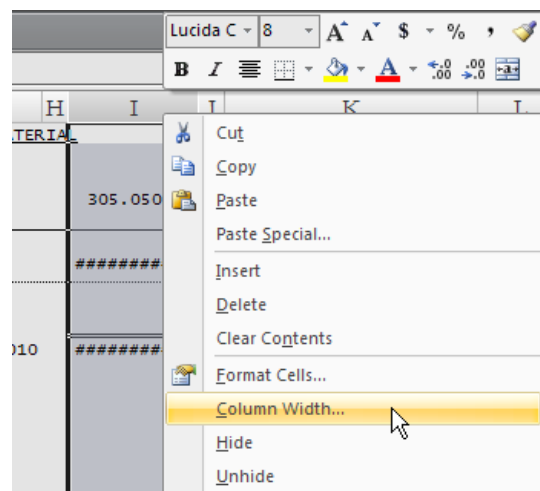


Figure A-1.3 Right-click menu for accessing the “Column Width...” command.

## A-2 “#REF!” Appears in the Quantity Total on the main “Bid Items” Worksheet

This error occurs most often when a category has been deleted from an MQ sheet and **Update Bid Item(s)** is run before **Rebuild References**. The solution is to first rebuild the references after deleting the category, which will create the proper links, then run the **Update Bid Item(s)** command.

ITEMS	CONST. I.D.:	1234-56-78	PROJECT MANAGER: JOHN DOE	CONSTRUCTION COST ESTI	5/14/2019
1	TITLE:	WAUKESHA - SUPERIOR			
2	LIMITS:	GREEN BAY TO LA CROSSE			
3	HIGHWAY:	STH 1			
4	COUNTY:	Adams			
5	PROGRAM CODE:	303 STATE HIGHWAY REHABILITATION		PSE Date:	5/13/
6	CONCEPT CODE:	RESURF RESURFACING		Let Date:	8/1/
7				NET C/L MI:	0.0
8	TOTAL	SCHEDULE OF BID ITEMS WISDOT STANDARD SPECIFICATIONS			
9	64	TOTAL BID ITEMS	64		
10		ITEM DESCRIPTION	QUANTITY	UNIT	UNIT PRICE
11	x	517.1010.S.02 Concrete Staining (structure) (02. R-13-251)	120	SF	
12	x	517.1010.S.03 Concrete Staining (structure) (03. R-13-253)	220	SF	
13	x	517.1010.S.04 Concrete Staining (structure) (04. R-13-254)	740	SF	
14	x	517.1050.S.01 Architectural Surface Treatment (structure) (01. B-13-572)	4370	SF	
15	x	646.1020 Marking Line Epoxy 4-Inch	#REF!	LF	\$10.00
16	x	646.3020 Marking Line Epoxy 8-Inch	598	LF	
17	x	646.6020 Marking Stop Line Epoxy 12-Inch	#REF!	LF	\$10.00
18	x	646.6220 Marking Yield Line Epoxy 18-Inch	#REF!	EACH	\$10.00
19	x	652.0225 Conduit Rigid Nonmetallic Schedule 40 2-Inch	1317	LF	

Figure A-2.4 “#REF!” error on “Bid Items” worksheet after deleting category from MQ sheet.

## A-3 Q2P Ribbon Fails to Load

If the Q2P ribbon fails to load when the workbook is opened, refer to the “Repair Q2P Excel Add-In” tool mentioned in section [1. Before You Get Started](#).

## A-4 Small Triangles Appear in Cells

If “Error Checking” is enabled in Excel, then small triangles will appear in cells when it believes there is an error (such as the multiple leading zeros in category numbers, etc.).

	A	B	C	D	E	F	G	H	I	J	K
1											
2											
3											
4											
5											
6											
7		0010	597+69	- 599+16	RT	147.00					
8		0010	598+15	- 599+37	LT	122.00					
9		0010	599+43	- 600+65	RT	122.00					
10		0010	599+65	- 601+12	LT	147.00					
11		0010	1202+31.28	- 1202+75.03	RT	43.75					
12		0010	1202+48.06	- 1202+91.81	LT	43.75					
13		0010	1203+19.03	- 1203+62.78	RT	43.75					
14		0010	1203+35.81	- 1203+79.56	LT	43.75					
15											
16											
17											
18											
19											

Figure A-4.5 Excel error checking displaying small triangles in cells – will also display in PowerPoint.

To stop Excel from displaying these error triangles, select **FILE > Options > Formulas**. Then under “Error Checking,” unselect “Enable background error checking”.

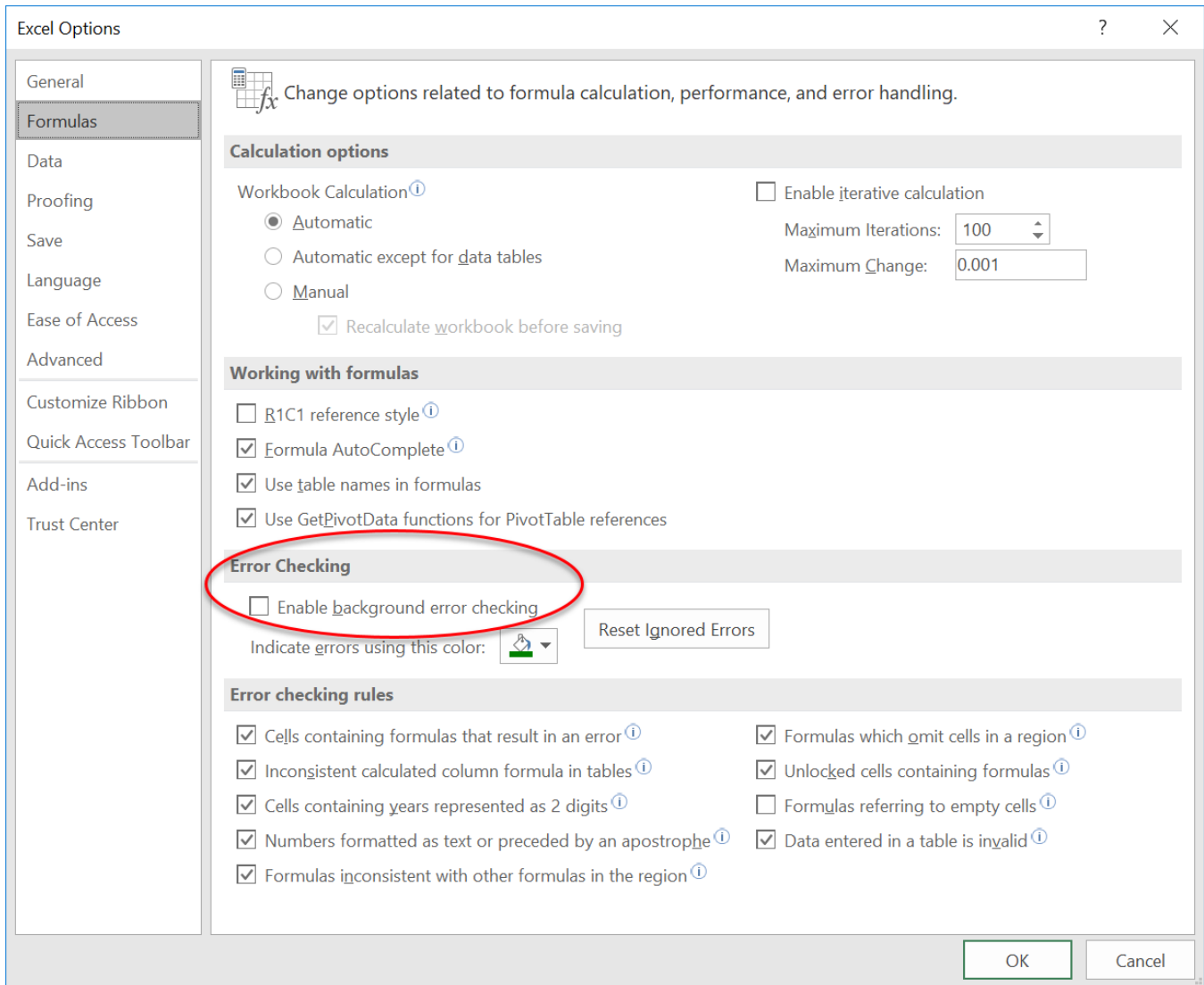


Figure A-4.6 Disabling Excel error checking.

### A-5 “Tab” Key Does Not Work in Newly Created MQ Sheet

There is a known bug that when creating a new MQ sheet, the “Tab” key will not work on that sheet at first. The solution is to switch to a different MQ sheet and then switch back to refresh its functionality.

### A-6 Renaming MQ Sheet Via Right-Click Inhibits Q2P Functionality

If an MQ sheet is renamed via the Excel right-click menu instead of using the proper “Rename MQ Sheet” command, that MQ sheet will no longer be recognized as a Q2P sheet and all the Q2P commands will cease functioning on that sheet. To rectify this, simply right-click again to revert the name to its original name. If necessary, use the “Create MQ Sheet” command to bring up the window and scroll to one of the bid items on the renamed sheet and that will showcase the original sheet name. While quantities will still be updated on the Bid Items worksheet, other functionality of Q2P will no longer work. This includes the creation of the Cost report and the ability to generate any of the XML files.

#### A-7 “This worksheet is not a valid Misc Qty sheet,...” Error Message

This error message appears when Q2P loses connection with a worksheet through the fact that the name ranges that Q2P utilizes no longer are able to connect to the worksheet. This is most commonly caused by the renaming of a worksheet via the right-click method. The fix in that case is described in [A-6](#) above. This error additionally can occur when trying to use Q2P ribbon commands with two Q2P excel workbooks open at the same time. Normally, closing both workbooks without saving, will fix the problem causing the error message.

A good tip is to periodically use the **Update Bid Items** button when on the Bid Items worksheet to update all the items in the workbook. If this command takes longer than 1 minute to run and it seems to hang up, there is an error with some of the data and the XML creation functionality will likely not work. Individually look through the worksheets and try to run a Q2P command from the ribbon such as **Insert Bid Item(s)** to try and get this error message to pop up. When it does pop up, that worksheet is at least part of the cause of the updating bid items command not working. Look to see if that worksheet was renamed incorrectly by using the process mentioned above in [A-6](#). If the errors persist, contact Q2P support.

## Appendix B. Miscellaneous Helpful Information

### B-1 Getting Help

Request help with Quantities 2 Plans by contacting the region Q2P power users in your office found [here](#) or by sending an email to [DOT Q2P Support](#). If the issue is believed to be more of a general problem with Excel or PowerPoint, WisDOT staff should contact the [DOT IT Service Desk](#).

### B-2 Quick Navigation

There are several ways to quickly navigate between the “Bid Items” worksheet and the MQ sheets.

To navigate to the “**Bid Items**” worksheet, users can use either of the following:

1. From the Q2P ribbon, **Q2P > Tool > Go to “Bid Items”**.

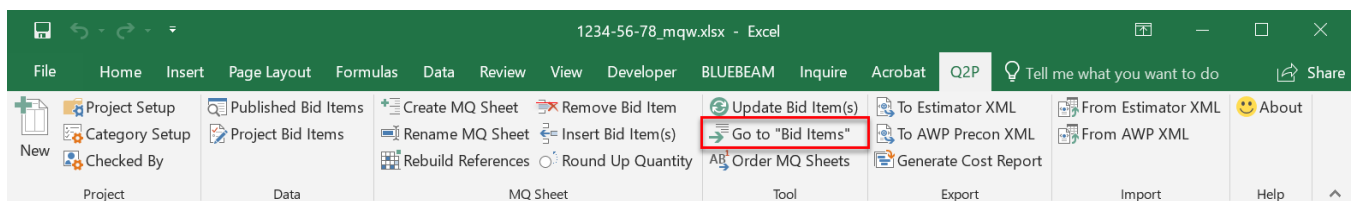


Figure B-2.1 “Go to “Bid Items”” command.

2. From an MQ sheet or summary sheet in any cell, **Right-click > Return to “Bid Items”**.

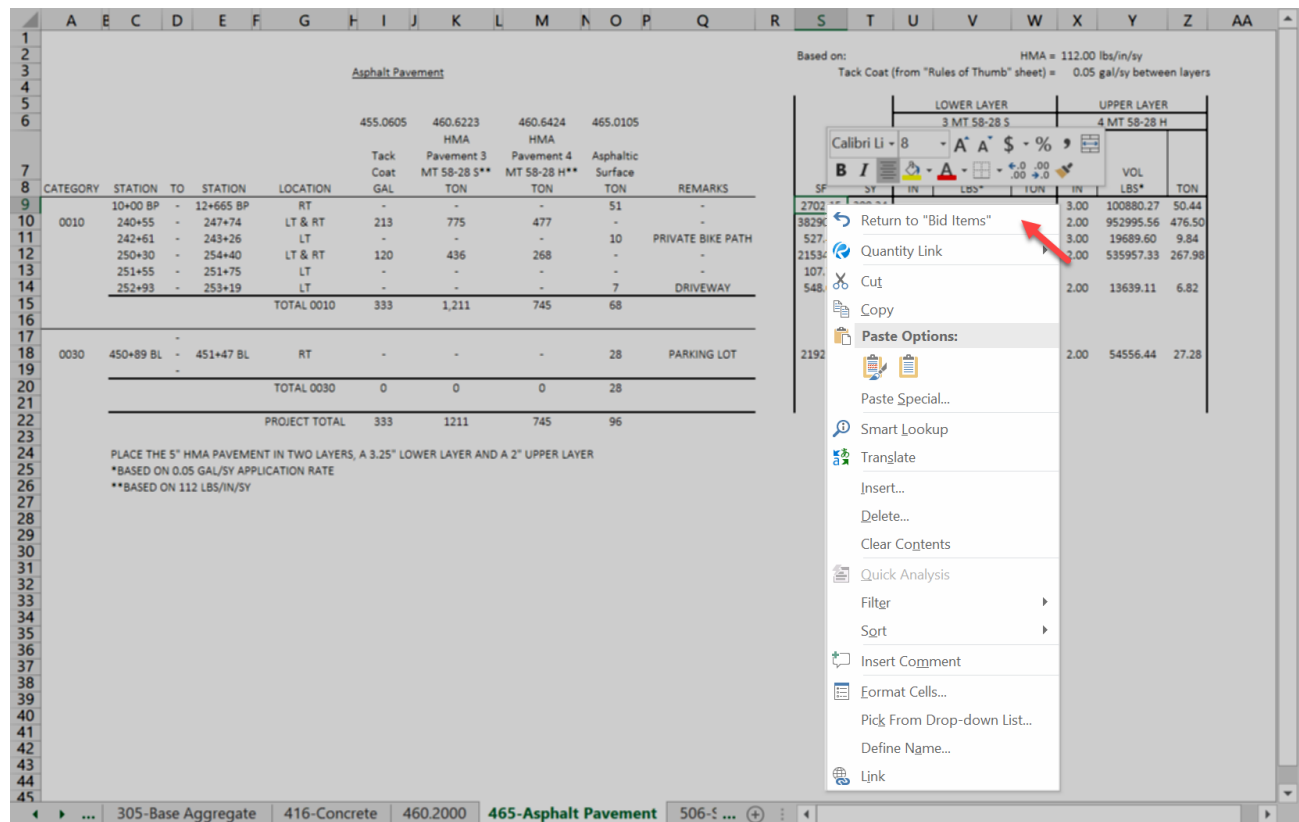


Figure B-2.2 “Return to “Bid Items”” command from the right-click menu.

To navigate to a desired **MQ sheet** or **summary sheet**:

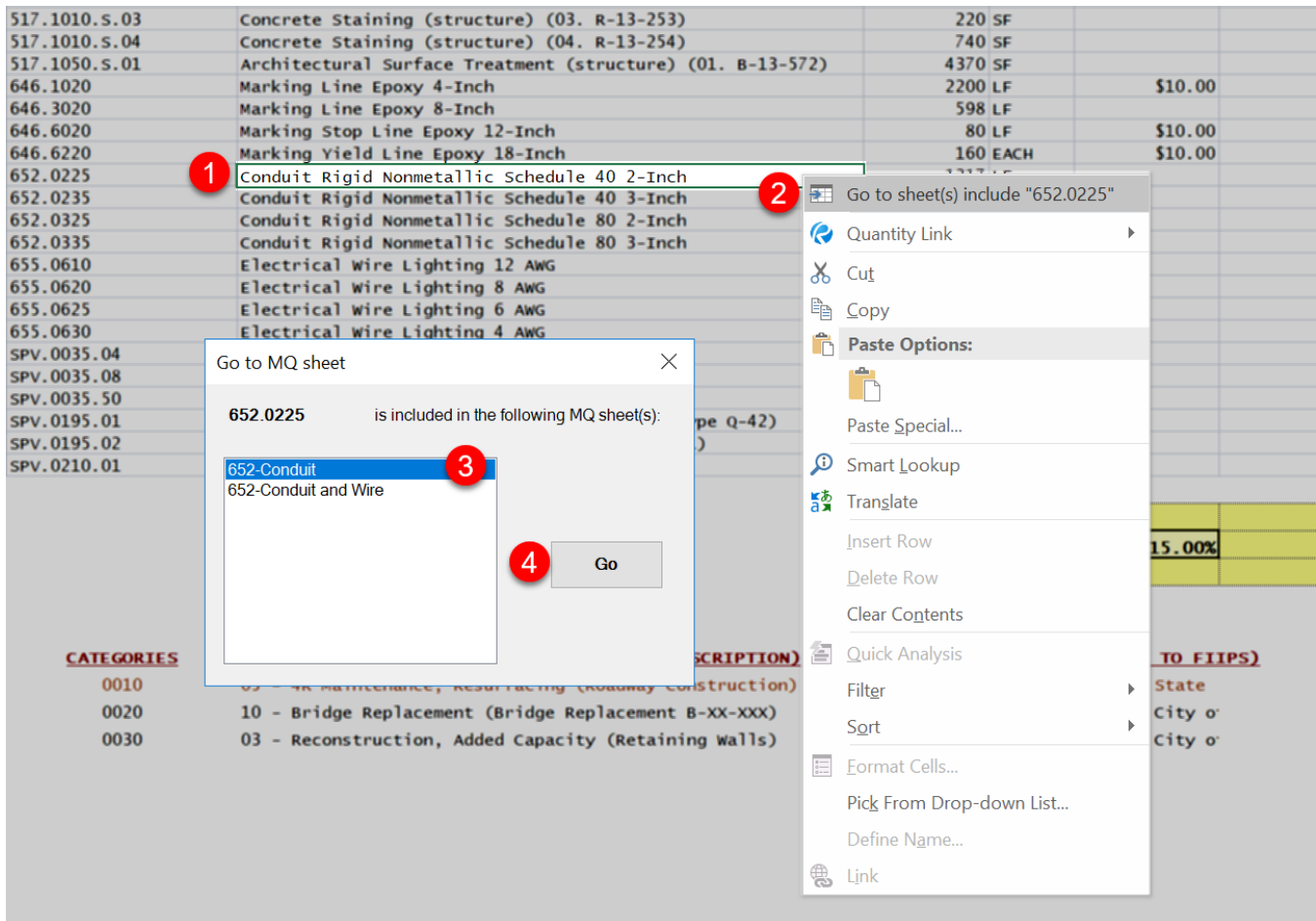


Figure B-2.3 “Go to MQ sheet” dialog from the right-click menu.

1. From the “Bid Items” worksheet, select the desired bid item.
2. **Right-click > Go to sheet(s) include “XXX.XXXX”.**
3. Select desired MQ sheet or summary sheet.
4. Select “Go.”

Users can also use Excel's native quick navigation:

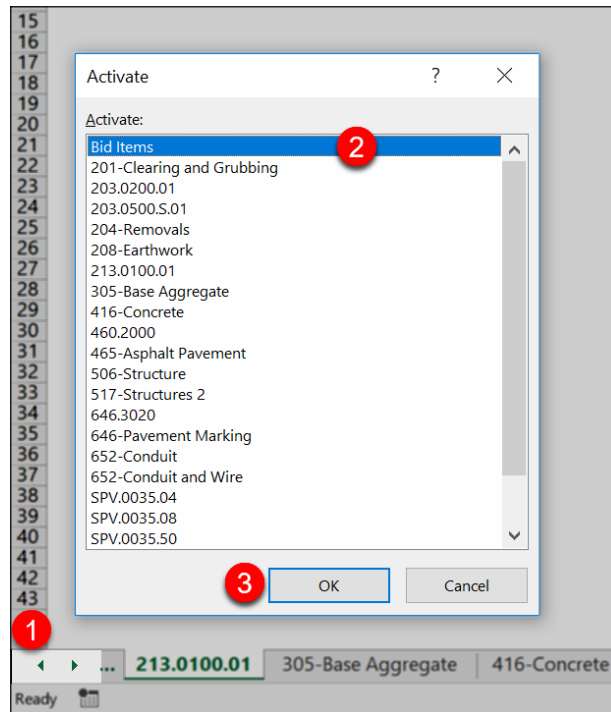



Figure B-2.4 Right-click menu from bottom left arrows displaying all sheets.

1. Right-click on bottom left arrows.
2. Scroll to desired worksheet.
3. Select "OK."

### B-3 Excel® Tips and Tricks

- To bypass automatic formatting of data in a cell, insert an apostrophe in front of the data.
- The format painter tool  under **Home > Clipboard** is useful for quickly copying the formatting of one cell or range to another.
- To quickly flip through worksheets, use **Ctrl + Page Up/Down**.
- Excel will only sort data that is contiguous to the initial selection. Also, even if the data is contiguous, it will not sort outside of an autofilter group.
- The **N function** can be repurposed for inserting comments into formulas. Using it will add 0 to the end of the formula, as the **N function** generally converts text (other than TRUE) to 0. This is cleaner than using Excel comments as it will not show a red triangle in the cell. Append a formula with:

+ N("This is the comment")

## B-4 Complex Formulas

In addition to relatively simple computations, more complex formulas can be written.

One common reoccurring issue with permanent signing MQ sheets is that stop signs have their SF calculated from the entered length X width (with a simple unrounded formula such as “=U9\*W9/144”), rather than octagonal area. The correct value from the sign plate can be used by using a lookup table:

```
=IF(K9="R1-1",VLOOKUP(U9,tables!$B$7:$C$14,2,FALSE),
IF(K9="ZX-X",VLOOKUP(U9,tables!$B$79:$C$86,2,FALSE),
IF(ISNUMBER(SEARCH("M",K9)),"-",
IF(ISBLANK(K9),"",
ROUND(((U9*W9)/144),2))))))
```

R1-1 SIZE	STOP W (A)	SF
1	24	3.31
2S	30	5.18
2M	36	7.46
3	36	7.46
4	48	13.25
5	48	13.25
6	18	1.86
7	12	0.78

Figure B-4.5

Excerpt from tables worksheet. (Lookup array highlighted)

Additional formulas can be used to show category subtotals on the “Bid Items” worksheet.

For CATEGORY 0010, with the quantity to be reported in column N:

```
=IF(A13<>"x","",IF(ISERROR(INDIRECT("TOTAL"&B13&"_0010")), "<CAT>",(INDIRECT("TOTAL"&B13&"_0010"))))
```

For CATEGORY 0010 cost:

```
=IF(A13<>"x","",IF(N13="<CAT>","<CAT>",IF(ISERROR(D13),0,IF(D13="",0,IF(D13="","0,IF(D13="<Error>","0,F13*N13))))))
```

Adjust the **red** values for each category/location. These formulas can cause slowdowns in Excel with larger projects.



It is important to always build a formula that other users will be able to understand. That might require using individual cells that are labeled for both variables and constants.

Other formulas can be written with Excel for computing incentives, etc.

Q2P users are encouraged to submit their custom formulas or workflows to [DOT Q2P Support](#), so they can be added to the User Guide or otherwise shared.

## B-5 Making Notes in Q2P

On the “Bid Items” worksheet, the columns past **column G** (except for **column K** and **L**) can be used to make notes about any particular item that is suitable for Estimate Documentation. Unit price source information and tagging the items in the FIIPS Preliminary Quantities groups are the most common notes recorded in Q2P.



Column K and L should be avoided as the command for importing prices from Estimator and AWP will overwrite these columns. Extraneous columns including K and L can be hidden when formatting the estimate documentation.

ITEM	QUANTITY	UNIT	UNIT PRICE	COST	FIIPS QUANTITIES	ESTIMATOR PRICE	AWP PRICE	ESTIMATOR	PAST PROJECT
201.0105	0	STA		\$0.00					
201.0205	0	STA		\$0.00					
204.0105	0	SY		\$0.00					
305.0115	350	CV		\$0.00					
305.0125	350	CV		\$0.00					
415.0090	0	SY		\$0.00					
465.0105	0	TON		\$0.00					
SPV.0060.01	0	EACH		\$0.00					
SPV.0090.01	0	LF		\$0.00					
CONSTRUCTION TOTAL:				\$0.00					
DELIVERY COST:				15.00%	\$0.00				
TOTAL:				\$0.00					

Figure B-5.6

Making notes in Q2P.

The commonly used abbreviations for FIIPS Preliminary Quantities (Roadbuilder Quantities) are:

ASPH (Asphalt Pavement TON), CONC (Concrete Pavement SY), EXCV (Excavation CY), BCRS (Base Course TON), BRDG (Bridge SF), MILL (Milling SY), GRND (Diamond Grinding SY), STRP (Pavement Marking LF), and RUBL (Rubblized Pavement SY). Obviously, some quantities need to be converted to the correct unit of measure prior to being totaled for entry into FIIPS.

The notes can serve as the required documentation of how unit prices were arrived at for the engineer's estimate (for the 80/20 rule items). When making notes about unit price sources, be sure to include a general project statement as to whether or not “one bidder” was assumed.

## B-6 Finding Contingency Let Dates in FIIPS

The **Earliest Possible Let** is obtained from the FIIPS. These are considered to be Priority 1 advanceable and have the PS&E submitted early. Priority 2 code projects are ones that are the top region priority for advancement and C.O. may request the PS&E package as needed. The regions may also have priority 10 contingency projects that don't have early lets in FIIPS and are just kept for regional balancing due to individual project delays, etc. rather than statewide program issues or unbalanced lettings.

Find the earliest possible let in FIIPS by checking **Project > Estimate...** and view the LET project information. If the “Earliest schedule date” differs from the “Schedule date” then the project is a priority 1 contingency and must be submitted early. PMP should have the base schedule set to the earliest date and the project developed accordingly.

This contingency date can be manually added to Q2P, above the PSE Date field, if the designer finds that information helpful to display.

Consultants should request this information from the WisDOT Project Manager.

### B-7 Migrating Older Q2P files to version 3.2.1.0 and later

Q2P was updated in the fall of 2024 to reflect a change in AWP; requiring designers to now choose a spec. book year for their project. As part of this update, the miscellaneous quantity sheet format was updated to remove the empty spacer columns between bid items. This was done to make it easier to import the tables into Civil 3D and help eliminate errors that would get created when users needed to manually insert extra columns for certain pavement marking and traffic control items. A migration tool was added to the latest version to assist in converting existing worksheets into the new format.

Check to make sure that the existing Q2P file is in good working order. Navigate to the “Bid Items” worksheet and go to the Tool section of the Q2P ribbon and click on the **Update Bid Item(s)** button. On the prompt window that appears, click the option that says “Update All in this Worksheet” and hit “Yes”. You should get a confirmation window showing the number of bid items updated. Double check that your estimate total is still the same and that there are no errors in any of the quantity cells. If your Q2P “hangs” or it’s taking over 2 minutes to update all the items, or your estimate total changed, there are likely some issues with your file, and it would be best to start a new Q2P file and copy over your MQ sheet data. Just remember to only copy over the rows between the header row and the row with category totals. Copying over the header or category total rows can cause some issues with data references in the new Q2P file.

If all of the items were updated, follow the instructions below to migrate your file:

- Check your worksheets to make sure that you don’t have any merged cells in your MQ tables, especially for some of the header rows. Unmerge any cells that you find prior to proceeding to the next step. The following workflow will not work to remove the spacer columns as it considers the merged cell data to be part of the column and therefore it won’t remove the spacer column.
- In the Help section of the Q2P ribbon, use the **Migrate** button to convert your worksheets to the new version without spacer columns in them. This button will create a copy of your Q2P file with the same name and add “\_Replica.xlsx” after it and will edit the Replica file to remove the spacer columns in the MQ tables worksheets. Once it is complete, there will be a confirmation window that pops up telling you the default saved location of the replica file. Before closing, save and rename your XXXXXXXX\_Replica file.xlsx to the location you prefer if the default location isn’t where you like. This new replica file will be your working file going forward.

- Next step is to check over every MQ sheet table and make sure that all the spacer columns were deleted. Be aware that the tool will only delete columns that are empty. If there are any numbers or characters in the entire column, it will not be deleted. The spacer columns in the MQ table need to be deleted in order to have Q2P insert and remove items properly. If a spacer column still exists, then you will need to manually move or delete that data from cells in the spacer column. **DO NOT DELETE THE SPACER COLUMN MANUALLY!** After the data is removed, re-run the Migrate command and then use the new file you get from that process. You will also notice that any calculations and work you did off to the side of the MQ tables have moved over as Q2P also deleted the empty columns between the MQ tables and that work. You can insert new columns to space this work away from the MQ table.
- Once the MQ tables have been reviewed, click on **Project Setup** in the Project section of the Q2P ribbon. You will see a new field for you to choose a Spec. book year. Choose the spec book year that you want to use for your current bid item list. For example, choose '25' for the 2025 spec book. Choose book '03' for using 2024 or earlier spec years. After you choose the spec book and hit OK, Q2P will appear to freeze or lock up. It is not frozen, just wait about 1 minute and the dialog window will disappear after Q2P has contacted the AWP database and made a copy of the list of bid items for the chosen spec. book year. *(You will notice in the header information on the Bid Items worksheet, that above the PSE Date will be a '25' if you chose the 2025 spec book. When you start a new Q2P file you'll see the label for Spec year, but for existing, just the value of the Spec year field will get inserted. This is just a visual issue that comes with updating an existing workbook.)*
- Then click on **Project Bid Items** in the Data section of the Q2P ribbon and in the window that appears, you should see red colored text at the top. Click on that text to bring up the reconciliation tool. Follow instructions in section 3.3 of this guide on how to update your bid items and add the new items to your file.
- Your file should now be reformatted and ready to use. Be aware that if you have already created MQ sheets in PowerPoint or C3D and have them linked to your Q2P file, you will need to redo the links as those links point to the old file. If you had links in your worksheets to other documents or files, check that those links are still working in the replica copy of Q2P.

## Appendix C. Confidentiality of Engineer's Estimate and Pre-award Bid Data



### CORRESPONDENCE/MEMORANDUM

DATE: April 10, 2017

TO: DOT Staff and Design Consultants

FROM: Scott Lawry, Chief Proposal Management Engineer

SUBJECT: Confidentiality of Engineer's Estimate and Pre-award Bid Data

As a reminder, the engineer's estimate and bid tab information, prior to award, are confidential. The release of this information may compromise the integrity of the competitive bidding process and cause harm to contractors and the Department. Individuals that knowingly release this information may be subject to discipline.

**The engineer's estimate is confidential before, during and after the letting.**

FHWA has stated, even after the project has been built, the engineer's estimate should not be released outside the department with the exception of the FHWA and engineering consultants working directly for the department on the project in question. The FHWA Office of Program Administration in *Guidelines on Preparing Engineer's Estimate, Bid Reviews and Evaluation* and the FHWA National Review Program in *National Review of State Cost Estimation Practice* provide the basis for preserving confidential estimates. Confidential estimates ensure market conditions are reflected within the bids and maintain a more competitive environment.

The department publishes an estimate range which can be found at <http://wisconsindot.gov/Pages/doing-bus/contractors/hcci/mstr-contrct-sched.aspx>.

**Bid tab information, prior to award of the contract, is confidential**

Bid tab information (contractor's bids on individual items) will not be publicized until the proposal is awarded. The Bureau of Project Development Proposal Management Section may share bid tab information with the design engineer during the bid analysis process to assist in evaluating the proposal and in particular as it relates to unbalancing. The concern arises when all bids are rejected. It is possible that bidders may want to use some of the submitted unit prices for subsequent bid lettings on the same proposal. Release of this information compromises the competitive bidding process.

After the proposal is awarded, bid tab information is posted on the HCCI and Bid Express websites.

To address confidentiality concerns, access to bid letting reports is restricted. If you require access to confidential bid letting reports, please contact Proposal Management at DOT DTSD BPD Proposal Management Section.

Thank you for supporting our efforts to maintain this needed confidentiality.

This page intentionally left mostly blank.