

Cranberry Interchange Project

1023-02-01/81

IH 90/IH 94

Town of Tomah, Monroe County



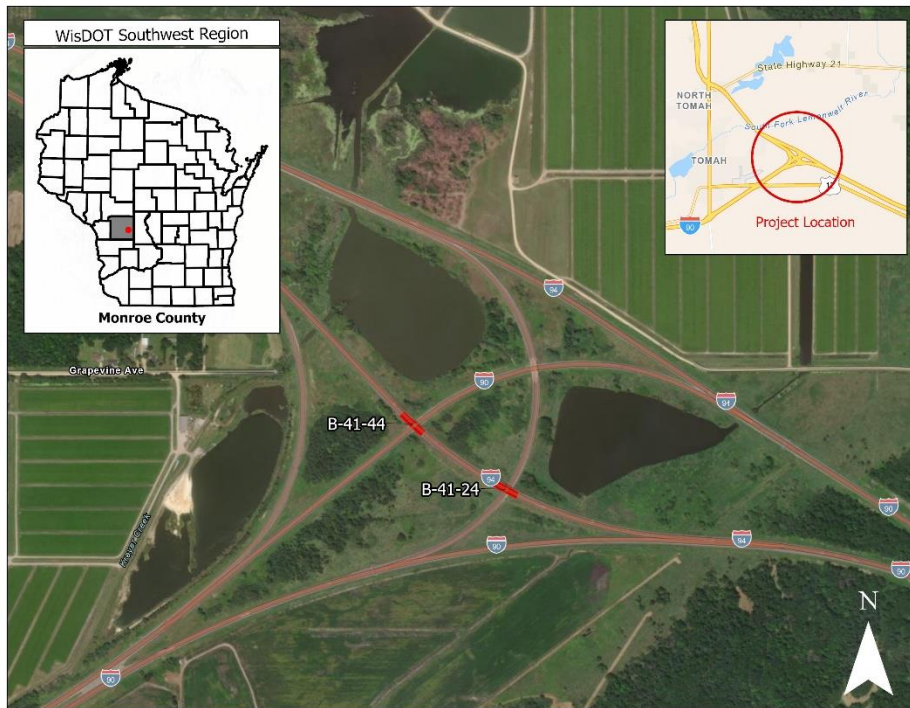
Project Scope:

Replace two structures carrying IH 94 EB at the Tomah system interchange. Bridge B-41-24 spans over the IH 90 EB ramp to IH 94 WB. Bridge B-41-44 spans over IH 90 WB.

Anticipated Procurement Method:

Low Bid Design-Build
DBE goal and stipend amount will be determined.

Project Location:



Project Development:

As of February 2024, WisDOT is beginning project development activities necessary to environmentally clear the project. This includes developing a conceptual design that will be the basis of the project's basic configuration. WisDOT is also evaluating project risks and identifying an approach to manage each risk. It is anticipated the new bridges will be required to meet WisDOT standards and that approach work will be limited to that needed to replace the bridges and stage traffic.

Design-Build Cost Estimate:

\$8,000,000 - \$10,000,000

Alternative Delivery Goal:

This project offers the opportunity to gain construction efficiencies by engaging a Design-Builder. As an interstate system interchange, the project location features critical traffic flow in three directions with seasonal traffic peaks. WisDOT desires a construction staging scheme that allows for traffic to efficiently operate through the interchange during construction. The project may benefit from opportunities to decrease the overall construction schedule. Traffic staging criteria will be developed by WisDOT. Alternative Technical Concepts will be allowed during procurement. Coordination with permitting agencies may be necessary due to the presence of wetlands and cranberry bogs.

Contacts:

For more information on the project, contact WisDOT Project Manager Brian Meyer at Brian.Meyer@dot.wi.gov. For more information on WisDOT's design-build program, visit wisconsindot.gov/design-build.