

# BICYCLISTS

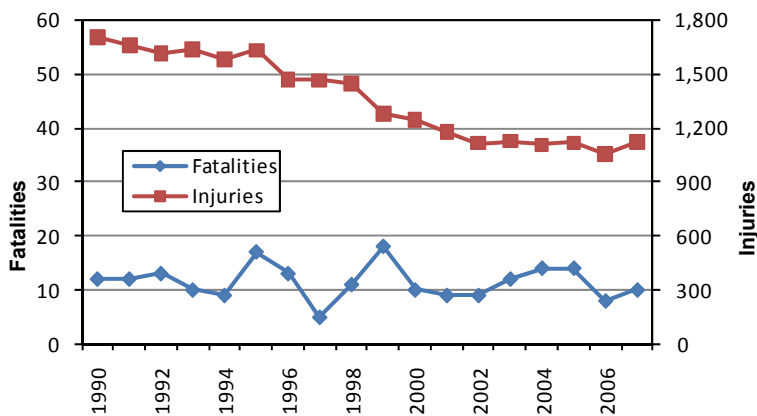


## Did You Know...

**In Wisconsin, in 2007, one bicyclist was injured or killed every 7.7 hours.**

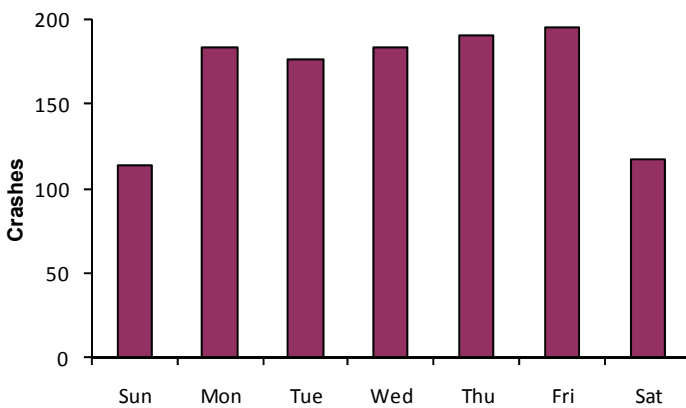
- 1,163 crashes involved bicyclists in Wisconsin in 2007.
- Of these crashes, 10 bicyclists were killed and 1,122 bicyclists were injured.
- The bicyclist is almost always injured in a bicycle/motor vehicle crash.

**Bicyclist Fatalities & Injuries (1990-2007)**



- Over the years, improvements to bicyclist safety have been made in areas such as engineering, education, enforcement, and emergency response.
- The number of bicyclists killed has remained steady for the past 18 years.
- The number of injuries has decreased by 34% since 1990.

**2007 Bicycle Crashes by Day of Week**

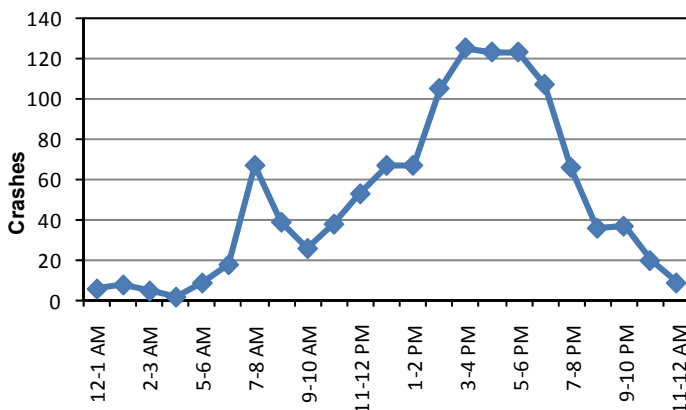


- Bicyclist crashes most often occur on weekdays.

## Types/Factors of Bicycle Crashes

- The most common types of bicycle/motor vehicle crashes involve: motorists failing to yield the right of way to a straight-through bicyclist when they make a left turn; motorist drive out at a sign control; bicyclist riding through a sign control; and motorists turning right on a red.
- **Impaired:** Of the 10 crashes in which a bicyclist was killed, 4 (40%) involved either an impaired bicyclist or motorist.
- Of the 1,122 crashes in which a bicyclist was injured, 37 (3%) involved either an impaired bicyclist or motorist.

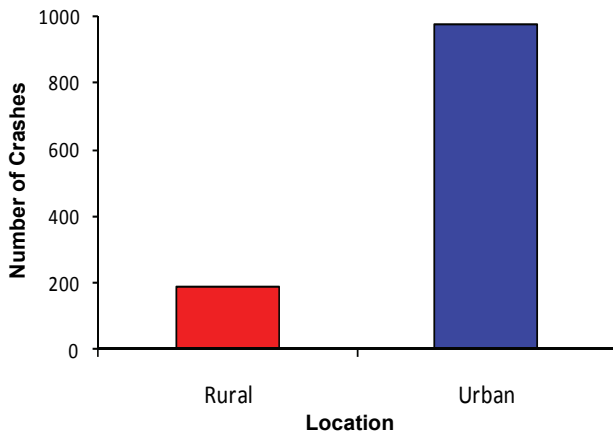
**2007 Bicycle Crashes by Time of Day**



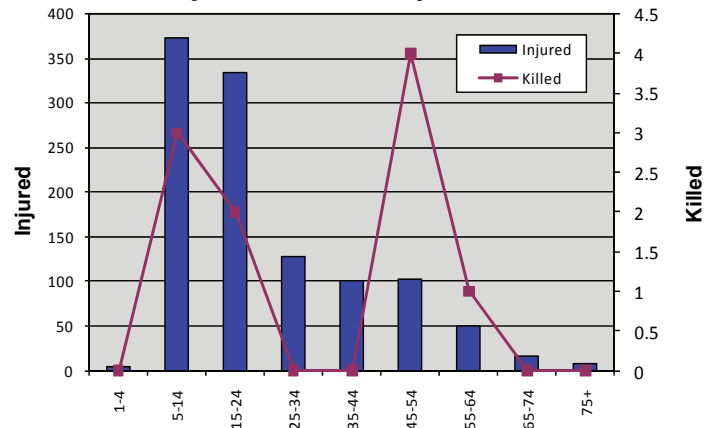
- Most bicyclist crashes occur between 3 and 7 p.m., the hours after school and the prime time that adults commute from work.



### 2007 Crashes involving Bicyclists by Location



### Bicyclists Killed or Injured in 2007



- Most bicycle crashes occur on local roads and streets.
- This is consistent with the fact that most bicycle travel is in urban areas.
- Children sustain between 1/3 and 1/2 of all bicycle injuries each year. They are involved in crashes caused by darting out into traffic and excessive vehicular speeds in neighborhoods and school zones.

## Current Bicycle Laws

Based on Wis. Stats. 340.01(5), 346.02(4)(a) and 346.80(2)(a)

- Vehicular Status-The bicycle is defined as a vehicle. The operator of a vehicle is granted the same rights and subject to the same duties as the driver of any other vehicle.
- Any person operating a bicycle at less than normal speed shall ride as close as practicable (not as far right as possible) to the right-hand edge or curb of the unobstructed traveled roadway, including riders who are riding two or more abreast.



## What You Can Do

- Give the bicycle at least 3 feet of clearance when passing.
- When turning left, watch for and yield to oncoming bicyclists just as you would yield to oncoming motorists.
- When turning right, yield to any bicyclist traveling on your right. Do not try to pass a bicyclist if you are planning to turn right at the next intersection or driveway.
- Be aware of children riding their bicycles. A child riding in the street may suddenly swerve in front of you or a child on the sidewalk may suddenly ride out in front of you.
- Bicyclists must ride on the right, in the same direction as other traffic.
- Bicyclists passing a parked, stopped, or moving vehicle are also required to give at least 3 feet of clearance.