



US 41 / US 151

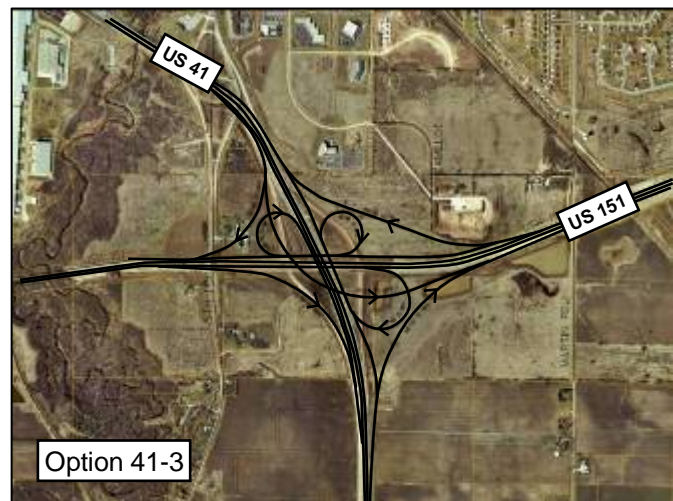
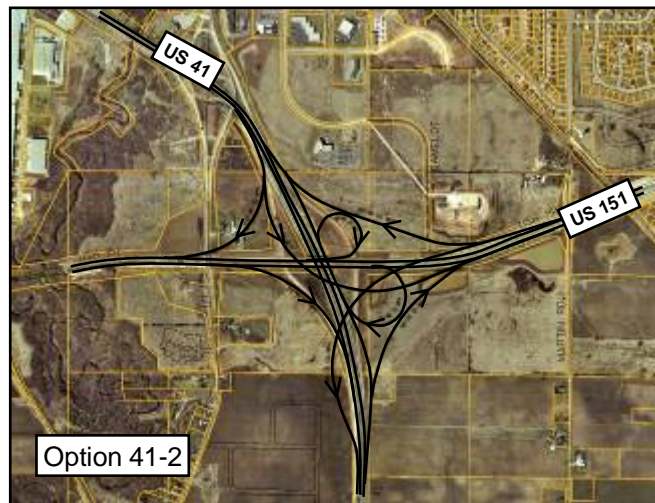
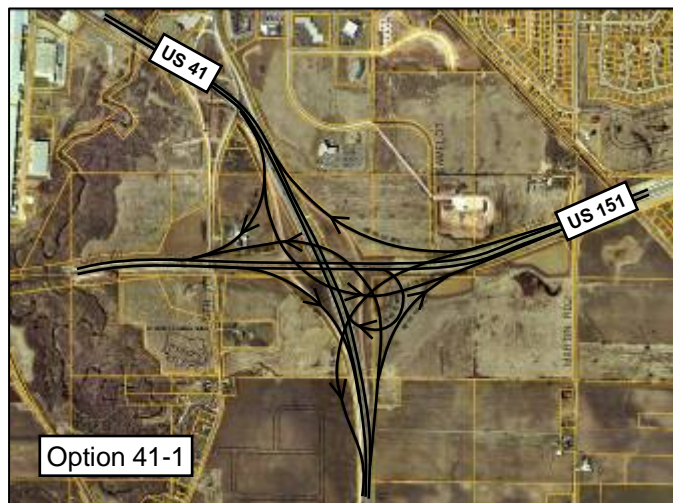
**WEST CORRIDOR
ALTERNATIVES**

System vs. Service Interchanges

- System Interchanges
 - When freeways meet, the connection between the two is a “free-flow” connection.
 - No stop lights, continuous movement.
- Service Interchanges
 - When freeways connect with local roads and highways, the connection between the two is a “service” connection.
 - Stop lights, stop signs, roundabouts, urban control.
- Every major population center in the state (except La Crosse) is characterized by backbone freeway connections, and the corresponding system interchanges.
- System Interchanges provide access to the backbone ([national](#)) transportation for the [region](#).



US 41 / US 151 System Interchange Alternatives

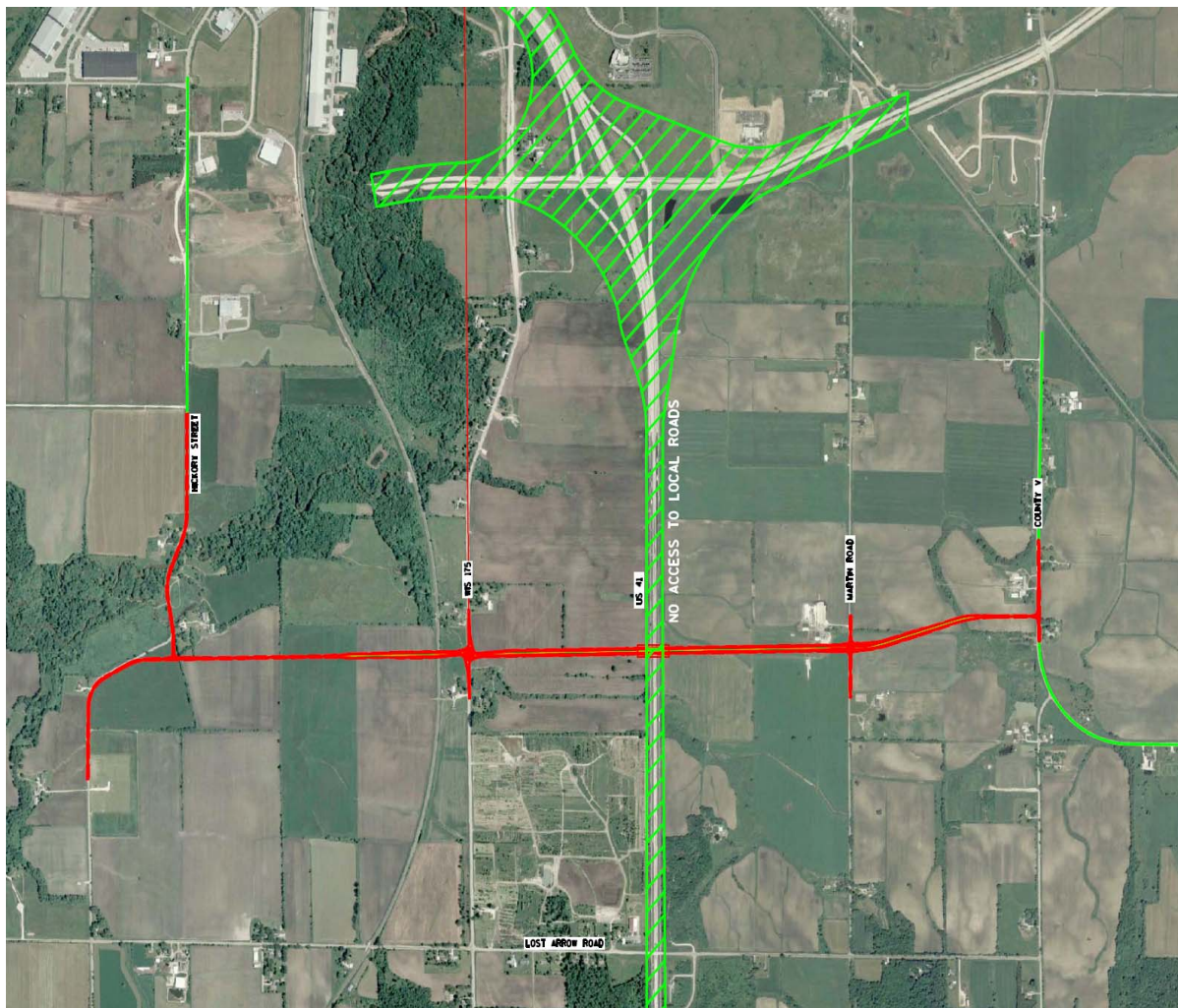


- A system interchange is planned for US 41/US 151. A system interchange would result in the following:
 - Better, free-flow movements between US 41 and US 151.
 - Changes to local access and travel patterns.
 - System interchanges located in major economic centers in Wisconsin
- The four alternatives being considered are shown to the left.
- No decision on the final alternative has been made.

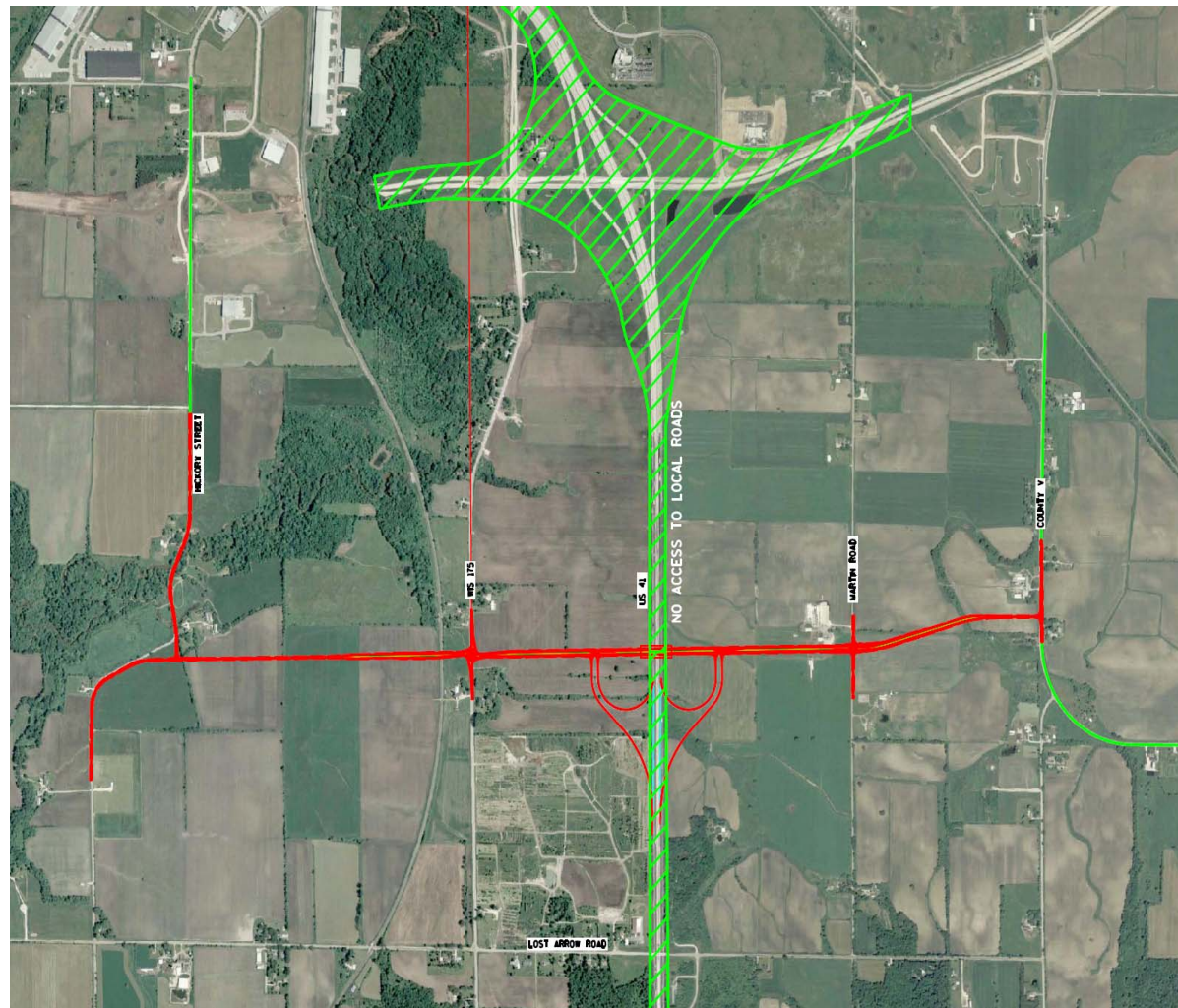


US 41 Connection Alternative 1

Overpass and East-West Local Road



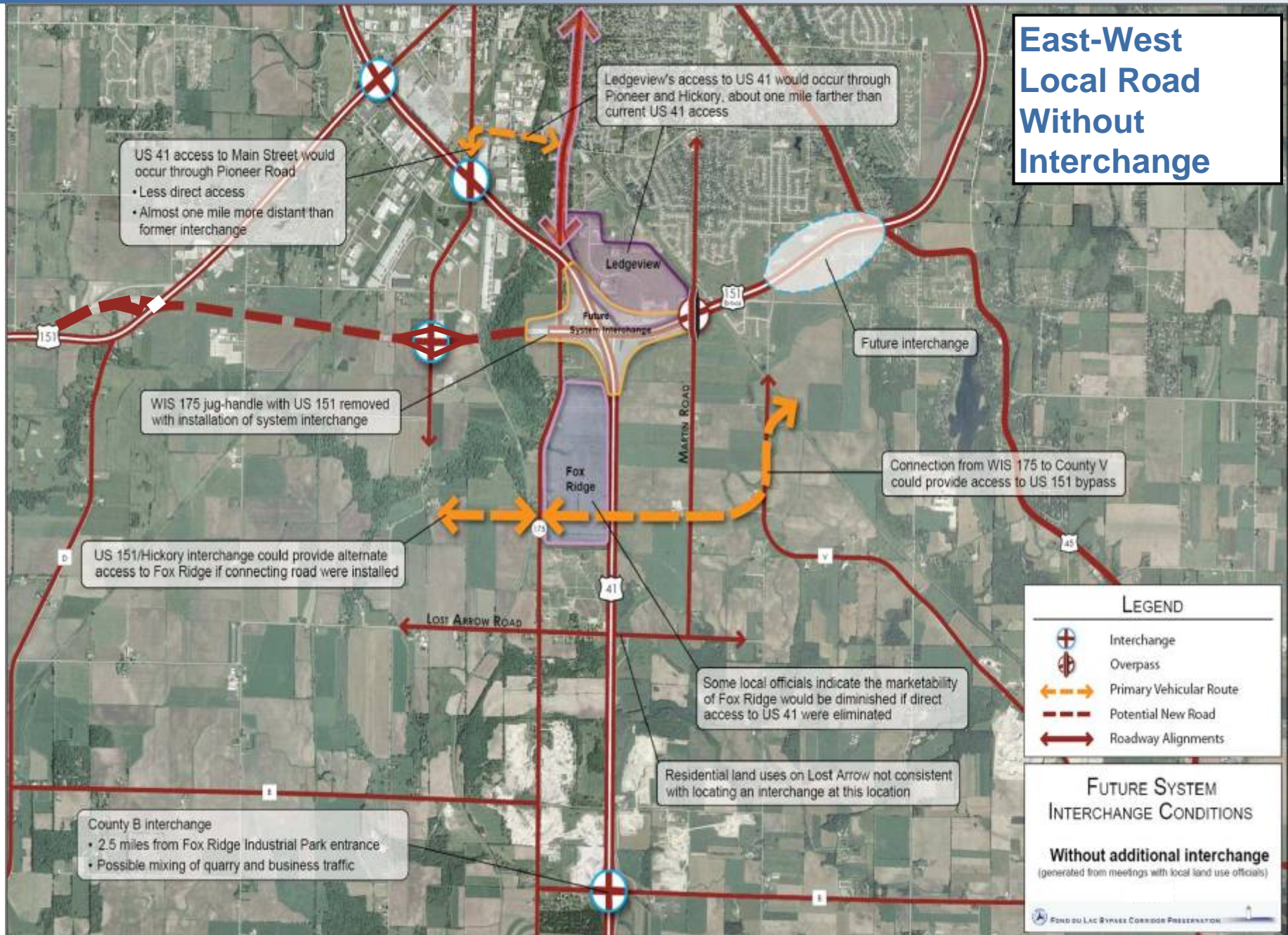
US 41 Connection Alternative 2 Interchange and East-West Local Road





US 41 Connection Alternative 1

East-West Local Road Without Interchange





US 41 Connection Alternative 2

