



US 151 Corridor Plan Fond du Lac Bypass

March 2008

Contact Information:

For more information about the US 151 Corridor Plan contact:

Paul Vraney, P.E.

WisDOT Project Manager
944 Vanderperren Way
Green Bay, WI 54324-0080
Phone: (920) 492-5999
Paul.Vraney@dot.state.wi.us

Kim Rudat, APR

Communications Manager
Phone: (920) 492-5743

www.dot.wisconsin.gov

Mission statement:

To provide leadership in the development and operation of a safe and efficient transportation system.

Public Meeting Scheduled

- Thursday, March 27, 2008
- 6 p.m. to 8 p.m.
- University of Wisconsin-Fond du Lac Large Group Instruction Room
- 400 University Drive, Fond du Lac
- Short presentation at 6:10 p.m.

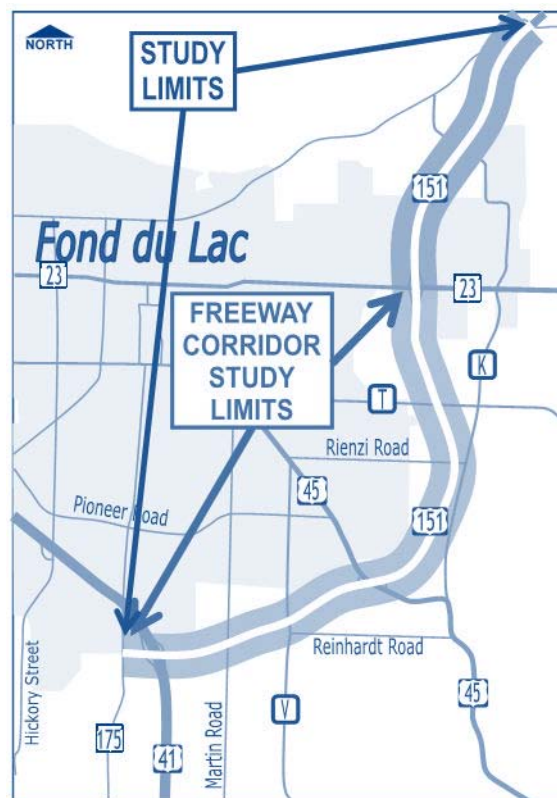
What is in store for the US 151 bypass? We're going to find out!

The Wisconsin Department of Transportation (WisDOT) North-east Region is conducting a study to develop a US 151 Corridor Preservation Plan for the Fond du Lac bypass. The study corridor is between WIS 175 and County WH (formerly WIS 149).

Based on public input, WisDOT's immediate focus with the corridor study is the US 151 segment between US 41 and WIS 23. WisDOT is developing long-term solutions for the corridor that can be implemented incrementally in the coming years.

The plan's goal is officially designating, mapping, and preserving the corridor as a freeway between WIS 175 and WIS 23. A freeway would mean controlled access with all the at-grade intersections replaced by well-spaced interchange(s), overpasses, and cul-de-sacs. Improvements would also be made to the local transportation network to balance the access and mobility needs of the area.

This planning helps the Fond du Lac area plan growth in light of future transportation improvements. It also helps WisDOT construct roadway improvements to the bypass that are consistent with a long-term vision for the corridor.





What this study will accomplish

The main objectives of this study include the following:

1. **Develop a facility plan consistent with US 151 classification in the Corridors 2020 State Highway Plan.** This plan includes ultimate freeway conversion and increasing mobility and traveler safety. Attributes of the freeway conversion include:
 - The elimination of all at-grade intersections between US 41 and WIS 23
 - The conversion of the existing US 151/US 41 and US 151/WIS 23 service interchanges to system interchanges (with free-flow, non-stop ramps)
 - The installation of overpasses and service interchanges to serve local transportation needs
2. **How to meet the transportation needs of the area.** This includes:
 - Providing reasonable access to residential, commercial and industrial areas
 - Reasonable routes for emergency response
 - Truck routes that reduce downtown truck traffic

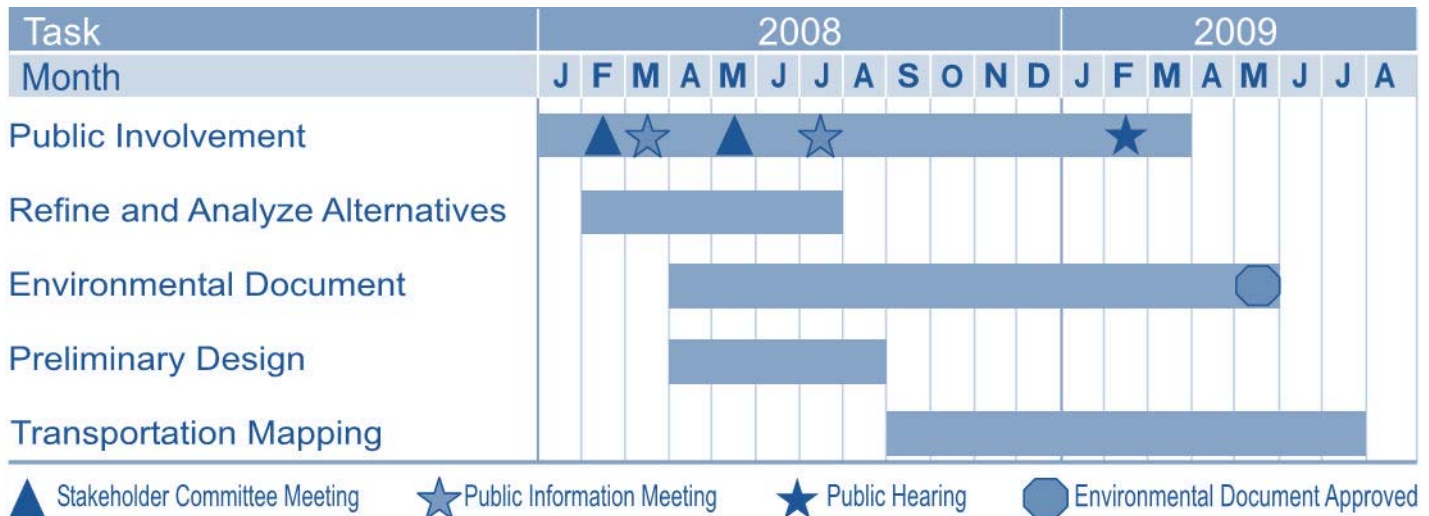
Meeting the above objectives allows WisDOT to implement staged improvements consistent with a long-range plan and preserve the needed right-of-way for future improvements (reducing right-of-way costs and minimizing relocation impacts). It will also assist Fond du Lac and neighboring communities in planning with a knowledge of anticipated future transportation improvements.

What's next?

After the first public information meeting, the study team will conduct the following activities:

- Meetings with local officials and stakeholders – ongoing
- Announce preferred alternatives – summer 2008
- Environmental document approved – spring 2009
- Study completion – mid-2009

Current Study Schedule





Stakeholder Committee members represent you

The stakeholder committee is a group of local individuals that will meet with the study team at critical milestones during the study. The stakeholder committee was assembled to represent local interests to provide study information to local residents and to convey local input to the study team. A listing of stakeholder committee members and the groups they represent is presented below.

- Tony Barthuly, Police Chief, City of Fond du Lac
- Allen Buechel, County Executive, Fond du Lac County
- Joe Clow, Fire Chief, Fond du Lac Fire Department/Emergency Medical Services
- Martin Farrell, County Board Chairperson, Fond du Lac County
- Richard Flood, Fond du Lac County Highway Committee Chairperson
- Jerome Guelig, Chairperson, Town of Taycheedah
- Richard Guell, Chairperson, Town of Eden
- Thomas Herre, City Manager, City of Fond du Lac
- Brenda Hicks-Sorensen, President, Fond du Lac County Economic Development
- Thomas Janke, Highway Commissioner, Fond du Lac County Highway Department
- Mark Jurgella, Council President, City of Fond du Lac
- Mark Lentz, Director, City of Fond du Lac Department of Public Works
- Tom Long, Director of Facilities, Agnesian Health Care
- Greg Maass/Marian Sheridan, Superintendent, Fond du Lac School District
- Harold Manske, Chairperson, Town of Fond du Lac
- Mary Jo Merwin, Administrator, Aurora Health Care
- James Pierquet, Chairperson, Town of Empire
- Walt Raith, Assistant Director, East Central Wisconsin Regional Planning Commission
- Joe Reitemeier, CEO, Fond du Lac Association of Commerce
- Wayne Rollin, Director, City of Fond du Lac Community Development
- Jeremy Thiesfeldt, Council Vice-President, City of Fond du Lac
- Sam Tobias, Director, Fond du Lac County Planning & Development
- Captain Dean Will, Fond du Lac County Sheriff's Department

WisDOT would like to thank the stakeholder committee members for their continued involvement and dedication to this corridor study.

Wisconsin Department of Transportation



WisDOT web site: www.dot.wisconsin.gov

Email: greenbay.dtd@dot.state.wi.us

Phone: (920) 492-5623

Fax: (920) 492-5711

Green Bay, WI 54324-0080

P.O. Box 28080

944 Vanderverren Way

We need your input at a public information meeting

A public information meeting is scheduled on March 27, 2008, at the University of Wisconsin-Fond du Lac Large Group Instruction room located at 400 University Drive in Fond du Lac from 6 p.m. to 8 p.m. (a short presentation will be made at 6:10 p.m.). The meeting will be held in an open-house format. The public is encouraged to visit during the meeting time as it fits their schedule. The meeting will feature exhibits displaying the proposed alternatives for the US 151 Bypass at intersecting roads and highways. WisDOT staff will be available to answer questions and receive comments. Persons with a concern for or knowledge about historic buildings and structures and archaeological sites are encouraged to attend this meeting or provide comments to WisDOT, Fond du Lac County, or the city of Fond du Lac.

UW-Fond du Lac is a handicap accessible facility. Those who are hearing impaired and require an interpreter should contact the WisDOT prior to March 19, 2008. Please dial 711 to contact the Wisconsin Telecommunication Relay System, and then ask the communication assistant to contact Paul Vraney of the Wisconsin Department of Transportation at (920) 492-5999.