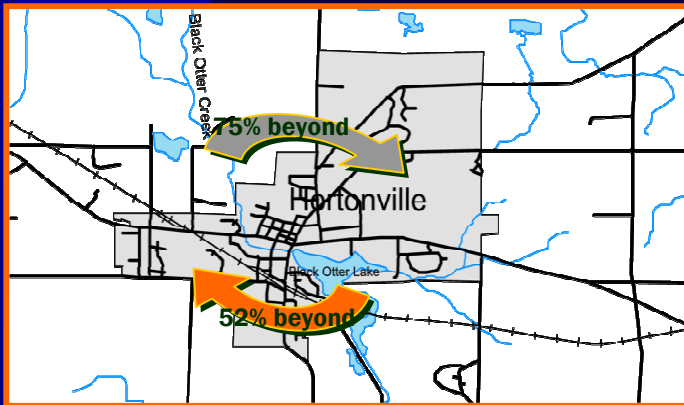


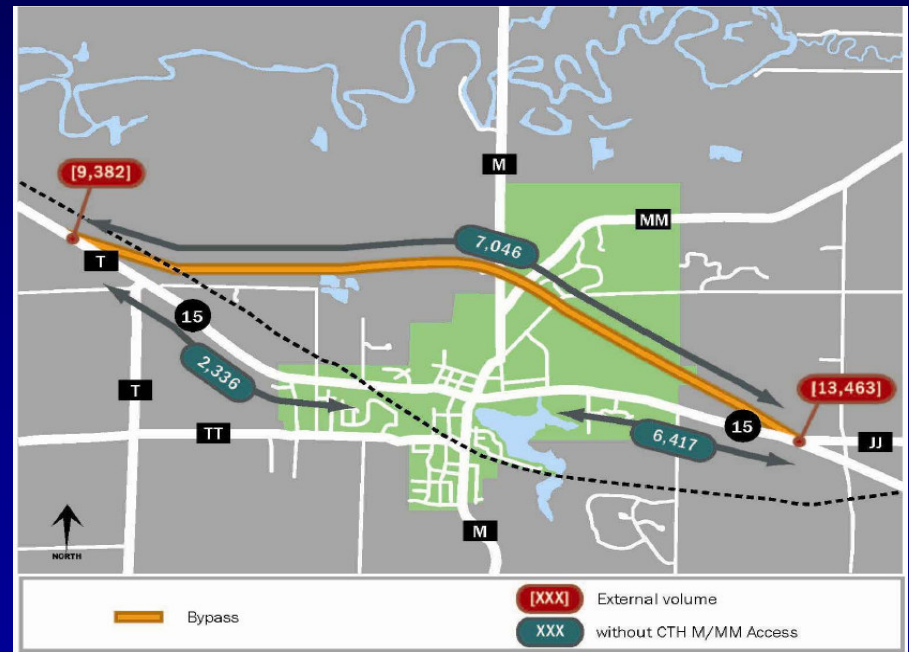
Traffic Forecast and Destinations

- OD Studies in 2000, 2004, and 2008

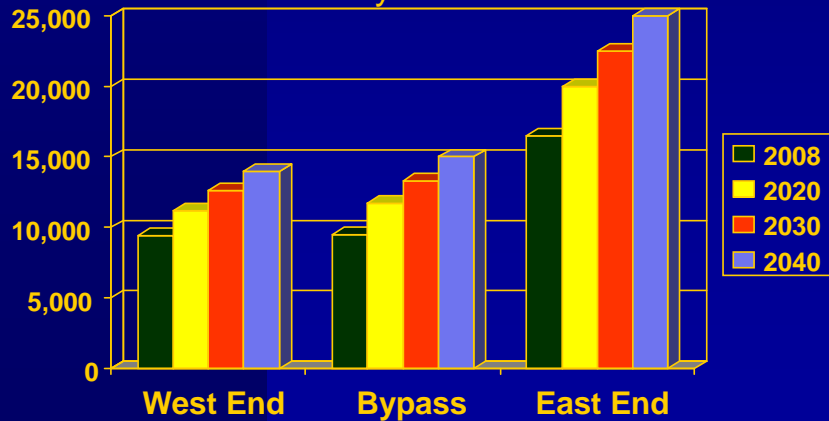
Destinations Beyond Hortonville

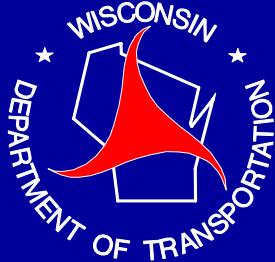


Bypass Traffic – 2008 Forecasted Daily Counts



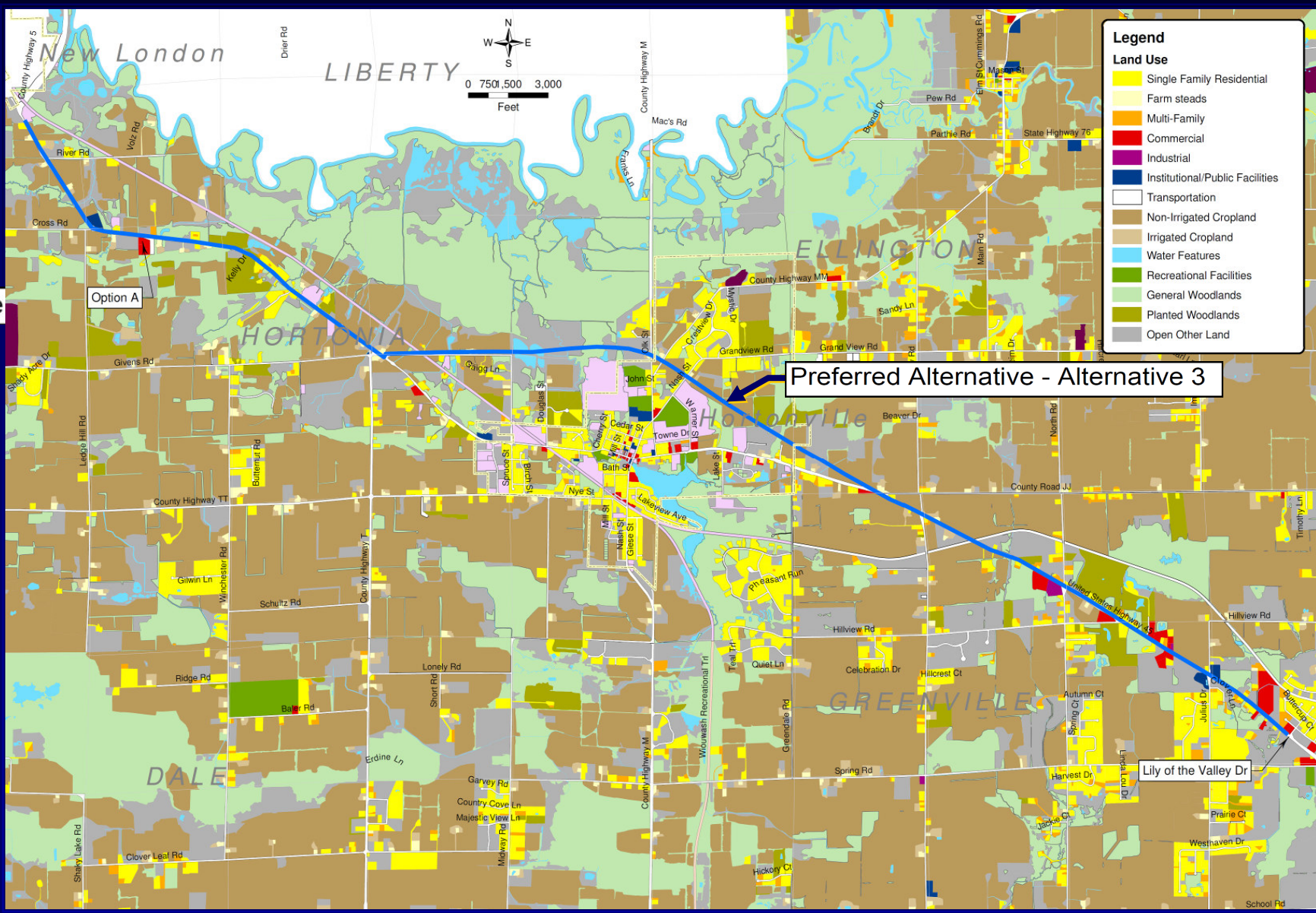
WIS 15 Daily Traffic Volumes

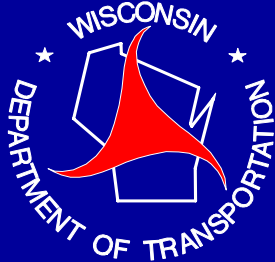




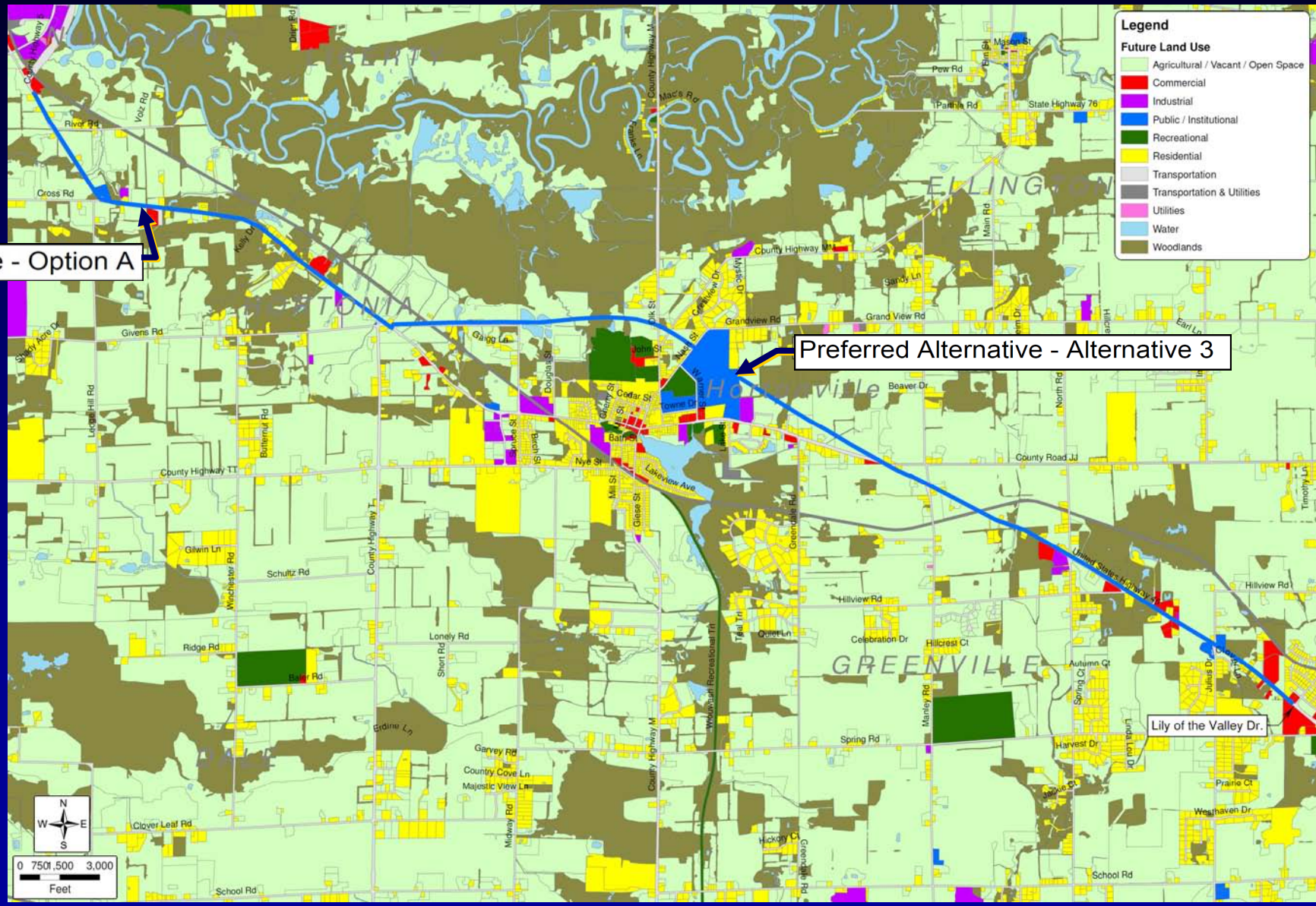
Existing Land Use

Preferred Alternative





Future Land Use



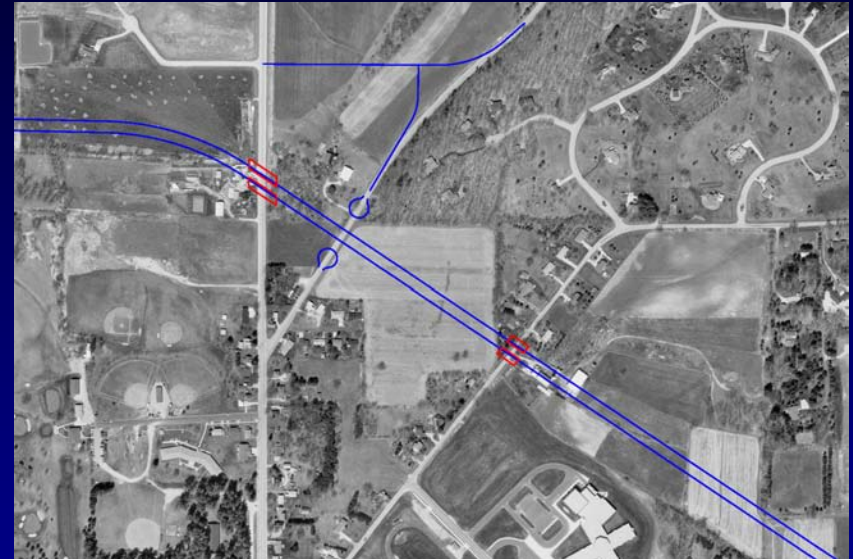
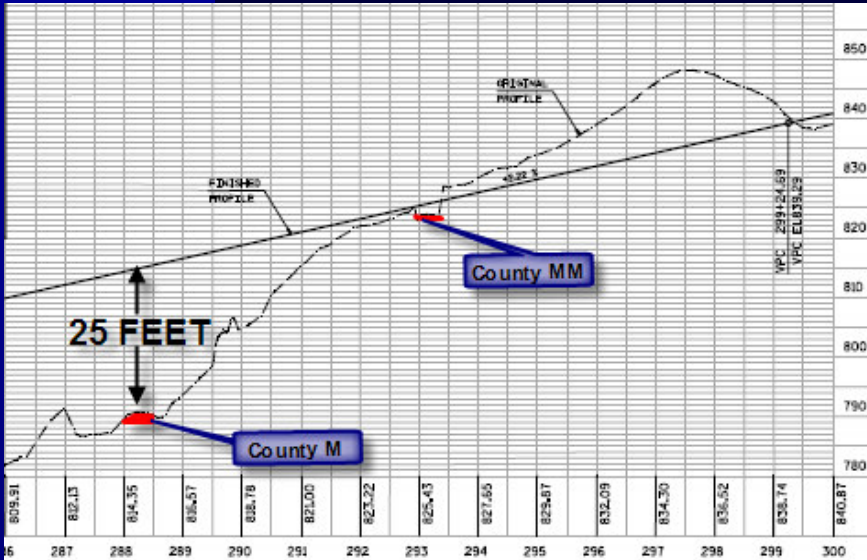
Preferred Alternative - Option A

Preferred Alternative - Alternative 3

Lily of the Valley Dr.



Why an overpass at County M?



TRAFFIC

- CORRIDOR FACILITY TYPE - RURAL EXPRESSWAY WITHOUT INTERCHANGES
- TRAFFIC COUNTS DO NOT WARRANT INTERCHANGE ACCESS
- COUNTY M ACCESS WILL SHIFT TRAFFIC PATTERNS THROUGHOUT HORTONVILLE
- BYPASS CONSTRUCTED TO SEPARATE THROUGH TRAFFIC FROM LOCAL TRAFFIC

DESIGN CHALLENGES

- TOPOGRAPHY AT CTH M RESTRICTS AT-GRADE DESIGN
- CONSTRAINT OF NASH STREET REMAINING A THROUGH STREET

IMPACTS

- COUNTY M ACCESS COULD AFFECT THE SENSITIVE WOLF RIVER BASIN
- AT-GRADE ACCESS OF COUNTY M WOULD IMPACT PUBLIC USE PARKS AND HOMES



Corridor Concept Map





2008 Traffic Forecast

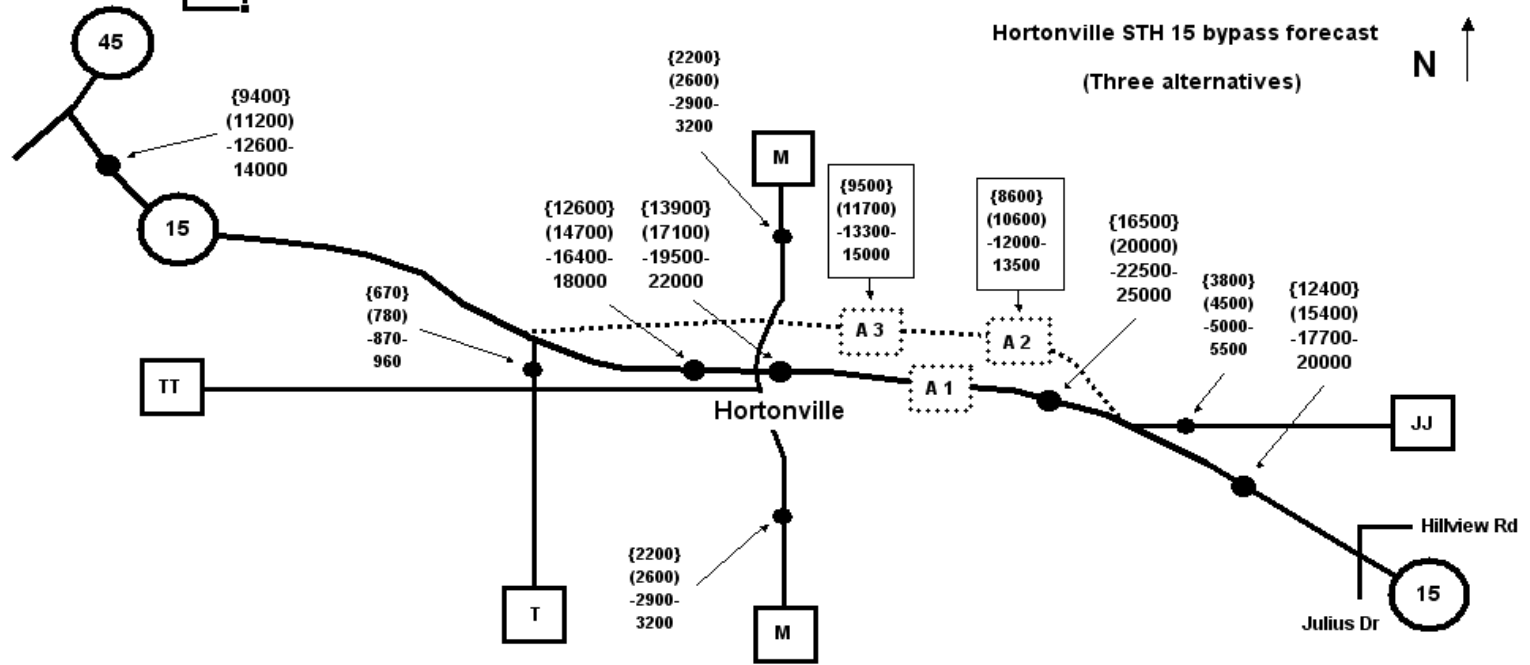
TRAFFIC FORECAST REPORT

PROJECT ID(S): 6430-06-00
 ROUTE(S): STH 15

DISTRICT/COUNTY(IES): NE / Outagamie
 LOCATION: USH 45 - Julius Dr
 COMPLETED: 2-14-2008; Updated 8-19-2008

Developed by: Lang Spicer
 E-Mail ID: lang.spicer@dot.state.wi.us
 Phone: (608) 266-7401
 FAX #: (608) 267-0294

Traffic Forecasting Section, Bureau of State Highway Programs, Division of Transportation Investment Management



Design Values (%)	Specify Last Count/Forecast Years:
Routes →	{000} 2007 AADT
Design	{000} 2020 AADT
Volume(s):	-000- 2030 AADT
	000 2040 AADT
K250	9.2
K100	10.2
K30	11.2
P(PHV)	14.1
T(DHV)	4.1
T(PHV)	2.3
D (Dsgn. Hr.)	62/38
K8(ADT)	--
T(A8HW)	--

Truck Class %'s	Seg. 1	Seg. 2	Seg. 3
Class			
2D	2.5	--	--
3AX	0.5	--	--
2S1+2S2	0.6	--	--
3-S2	1.6	--	--
DBL-BTM	0.0	--	--
TOTAL	5.2%	--	--

NOTES ON THE FORECAST:

- The forecast assumes three separate alternatives including: A1) no build; A2) northern bypass without access to CTH M; and A3) northern bypass with access to CTH M. The August, 2008 origin-destination survey was used in the alternative analysis for trips that would bypass the community of Hortonville. The percentage of through trips from the stations on STH 15 was applied to the most recent count in the downtown area (13900) to arrive at the projected bypassable trips with and without access to CTH M.
- STH 15 is a factor group IV highway indicating low to moderate fluctuation in traffic throughout the year. It is considered a rural principal arterial highway for count purposes at this location.

MORE NOTES ON THE FORECAST:

- The most recent truck type percentages were obtained from a 2007 vehicle classification site on STH 15 between CTH JJ and STH 76.
- The update is based upon the most recent 2007 AADT volumes and the 2008 origin-destination survey conducted by the HWTE Corporation east and west of Hortonville in August, 2008.