



Public Involvement

WIS 29

From County D to County OO

Marathon County

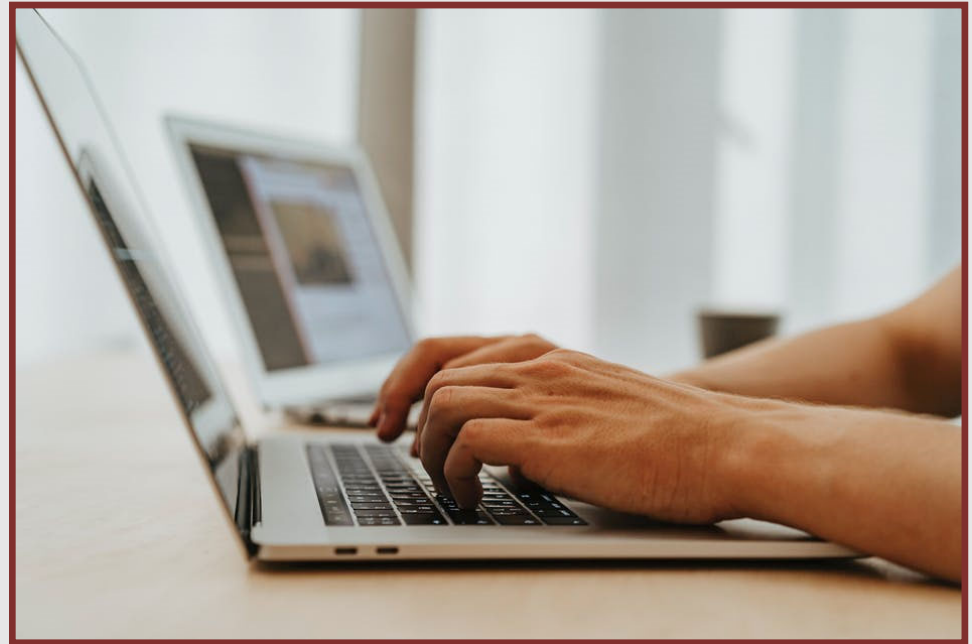
February 21, 2024 to March 13, 2024

More information is available for review on the project website: <https://wisconsindot.gov/Pages/projects/by-region/nc/wis29countydmar/default.aspx>

Deaf, hard-of-hearing, deaf-blind, and speech-disabled persons should contact the Wisconsin Relay Service by dialing 711.

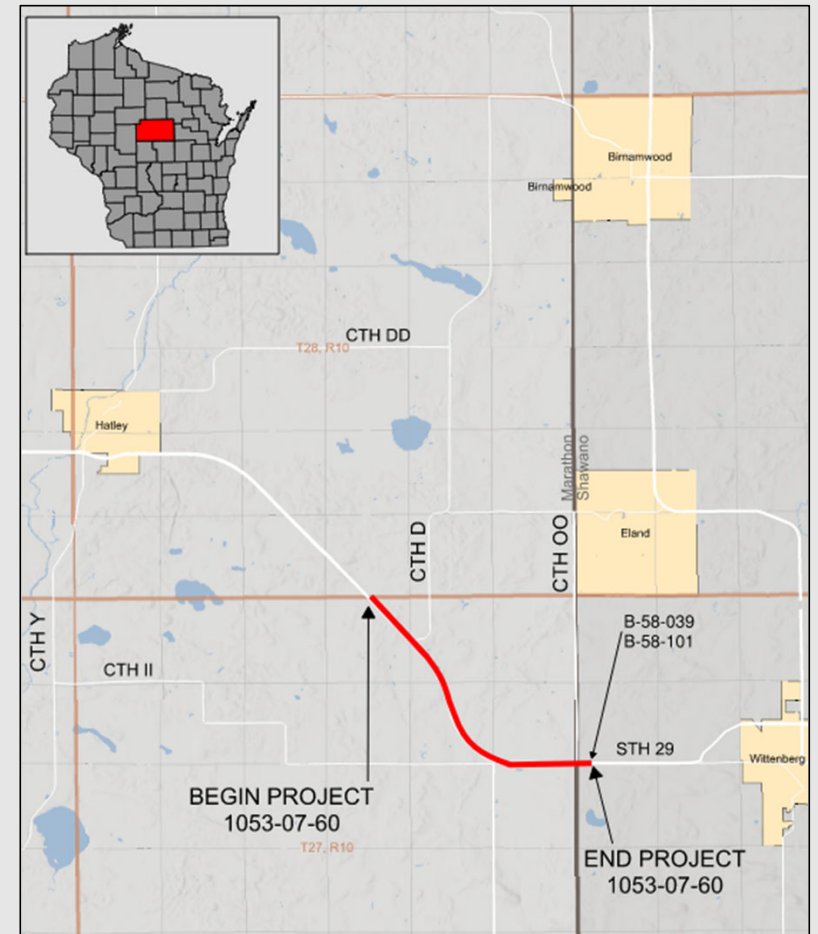
Purpose of Public Involvement

- To inform members of the public about the proposed project
- To obtain feedback from the public on the proposed improvements



Project Location

The Wisconsin Department of Transportation (WisDOT) is planning pavement rehabilitation for 3.6 miles of WIS 29 in Marathon County.



Project Information – Purpose and Need

Purpose:

Preserve the roadway asset and minimize the overall lifecycle cost of the existing 3.6 miles of divided roadway.

Project Needs:

- Roadway deficiencies
- Drainage system deficiencies
- Safety
- Bridge deficiencies



Project Information – Alternatives Considered

Alternative 1 - No Build

Maintain the existing facility with no improvements other than routine maintenance.

Alternative 2 – Preservation / Restoration (Rehabilitation)

Concrete pavement joint and crack repair, mill and overlay of existing asphalt surfaces including shoulders, turn lanes, intersections, sideroads, and median crossovers. Adjustments, repairs and replacements of curb and gutter, surface drains, guardrail, median barrier and cable barrier, as necessary. Structure on WIS 29 (EB) over the South Branch Embarrass River (B-58-0039) would receive deck edge repair, drip edge replacement, and a thin polymer overlay repair.

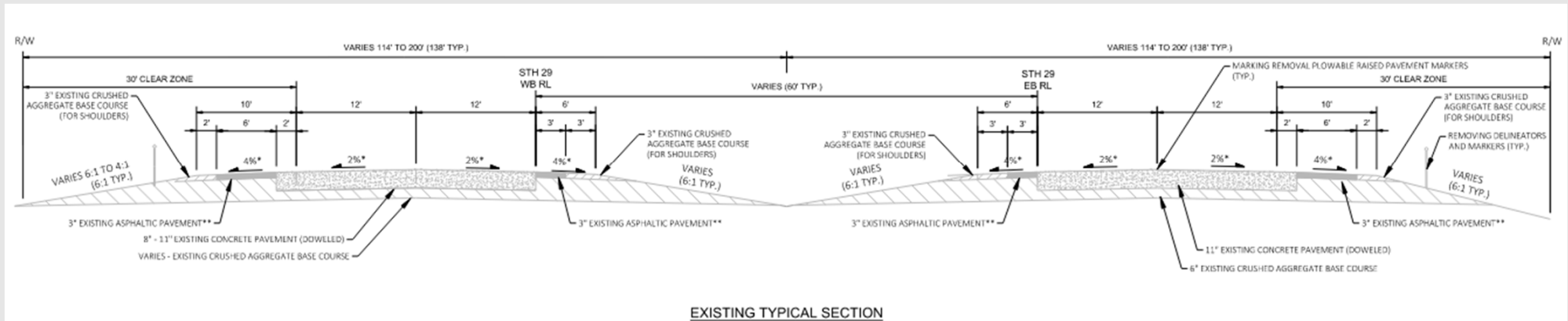
Alternative 3 – Pavement Replacement

Replace concrete pavement and existing asphalt surfaces including shoulders, turn lanes, intersections, sideroads, and median crossovers. Replacement of curb and gutter, surface drains and guardrail. Adjustments, repairs and replacements of median barrier and cable barrier, as necessary. Structure on WIS 29 (EB) over the South Branch Embarrass River (B-58-0039) would receive deck edge repair, drip edge replacement, and a thin polymer overlay repair.



Project Information – Proposed Improvement

- Concrete pavement joint and crack repair with diamond grinding of patches
- Mill and asphalt overlay of asphalt shoulders, turn lanes, intersections, sideroads, and maintenance crossovers
- Adjustments, repairs, and replacements
 - Curb and gutter, surface drains, guardrail, median barrier, and cable barrier, as necessary
- Bridge on WIS 29 (EB) over the South Branch Embarrass River (B-58-0039)
 - Deck repair, drip edge replacement and thin polymer overlay repair



Project Information – Environmental Awareness

- Environmental Document
 - Currently being prepared
- DNR Initial Concurrence
 - Received → Environmental conditions will be incorporated and accommodated
- Archaeological and Historical Impacts
 - Screening List → No potential for adverse effects.
- Potential for wetland impacts
 - Wetlands impacts will be avoided and/or minimized to the greatest extent practicable
 - Unavoidable wetland losses will be compensated for in accordance with the DNR/DOT Cooperative Agreement and the WisDOT Wetland Mitigation Banking Technical Guideline.



Proposed Traffic Impacts

- During construction, motorists can expect single lane closures or bidirectional traffic.
 - Advanced notification will be given for temporary disruptions to access due construction operations
- Construction currently anticipated for 2026.



Real Estate

- Additional Right of Way is not anticipated



Project Update/Next Steps

- February 21, 2024: Virtual Public Involvement Meeting (Project Website + Comment Period)
- April 2024: Preliminary Plans
- April 2024: Environmental Document
- May 2025: Final plans, specifications and estimates submission
- 2026: Construction



Public Input

- Provide input by March 13, 2024
 - Complete and mail comment form found in handout
 - Via online survey on project website
 - <https://wisconsindot.gov/Pages/projects/by-region/nc/wis29countydmar/default.aspx>
 - Via email or phone

Preston Bohn, P.E.

Project Manager

Wisconsin Department of Transportation

North Central Region

1681 Second Avenue South

Wisconsin Rapids, WI 54495-4768

(715) 421-7382

preston.bohn@dot.wi.gov

Deaf, hard-of-hearing, deaf-blind, and speech-disabled persons should contact the Wisconsin Relay Service by dialing 711.

