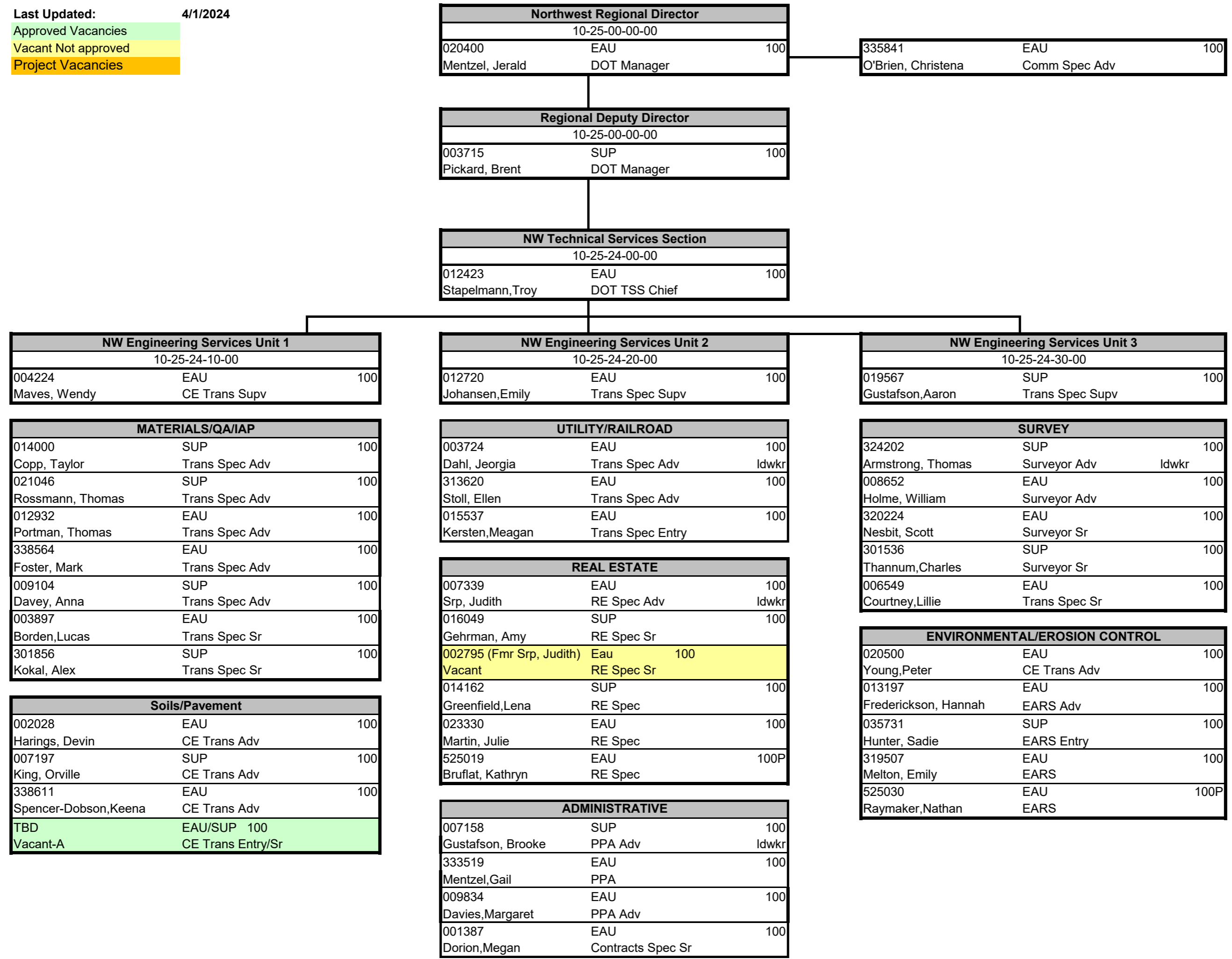


Last Updated: 4/1/2024

Approved Vacancies

Vacant Not approved

Project Vacancies



| | |
|------|-------|
| 0.00 | 11.00 |
| 1.00 | 0 |
| 0.00 | |

| | |
|------|-------|
| 0.00 | 13.00 |
| 0.00 | 1 |
| 0.00 | |

| | |
|------|-------|
| 0.00 | 10.00 |
| 0.00 | 1 |
| 0.00 | |

Last Updated: 4/1/2024

Approved Vacancies

Vacant Not approved

Project Vacancies

| Northwest Regional Director | | | |
|-----------------------------|-------------|-----|--|
| 10-25-00-00-00 | | | |
| 020400 | EAU | 100 | |
| Mentzel, Jerald | DOT Manager | | |

| | | | |
|--------------------|---------------|-----|--|
| 335841 | EAU | 100 | |
| O'Brien, Christena | Comm Spec Adv | | |

| Regional Deputy Director | | | |
|--------------------------|-------------|-----|--|
| 10-25-00-00-00 | | | |
| 003715 | SUP | 100 | |
| Pickard, Brent | DOT Manager | | |

| NW Systems Operations Section | | | |
|-------------------------------|---------------|-----|--|
| 10-25-23-00-00 | | | |
| 007466 | EAU | 100 | |
| Mason, Timothy M. | DOT Eng Chief | | |

| NW Systems Planning Section | | | |
|-----------------------------|---------------|-----|--|
| 10-25-22-00-00 | | | |
| 007552 | EAU | 100 | |
| Wincentzen, David | DOT Eng Chief | | |

| NW Maintenance Unit 1 | | | |
|-----------------------|---------------|-----|--|
| 10-25-23-10-00 | | | |
| 017497 | EAU | 100 | |
| Thorsen, Matthew | CE Trans Supv | | |

| NW Maintenance Unit 2 | | | |
|-----------------------|---------------|-----|--|
| 10-25-23-20-00 | | | |
| 018307 | SUP | 100 | |
| Ostrenga, Michael | CE Trans Supv | | |

| NW Traffic Unit 1 | | | |
|-------------------|---------------|-----|--|
| 10-25-23-30-00 | | | |
| 010915 | EAU | 100 | |
| Rusch, Stacey | CE Trans Supv | | |

| NW Planning Unit 1 | | | |
|--------------------|-----------------|-----|--|
| 10-25-22-10-00 | | | |
| 010718 | EAU | 100 | |
| Michels, Chris | Trans Spec Supv | | |

| NW Planning Unit 2 | | | |
|--------------------|---------------|-----|--|
| 10-25-22-20-00 | | | |
| 001684 | EAU | 100 | |
| Heldt, Robert | CE Trans Supv | | |

| MAINTENANCE | | | |
|-------------------|-------------------|-----|--|
| 012104 | EAU | 100 | |
| Gingras, Paul | CE Trans Adv | | |
| 006285 | EAU | 100 | |
| Burke, Michael | Trans Spec Adv | | |
| 315535 | EAU | 100 | |
| Carroll, Nick | Trans Spec Adv | | |
| 017668 | EAU | 100 | |
| Hendrickson, Erik | Trans Spec Adv | | |
| 000747 | EAU | 100 | |
| Krause, Ross | Trans Spec Adv | | |
| 012393 | EAU | 100 | |
| Larson, Bobbi | Financial Spec Sr | | |

| TRAFFIC | | | |
|---------------|------------------|-----|--|
| 014371 | EAU | 100 | |
| Hurt, Roni | Trans Spec Sr | | |
| 037166 | EAU | 100 | |
| Coequyt, Gary | Trans Tech Adv 2 | | |

| TRAFFIC | | | |
|----------------------|-------------------|-----|--|
| 021174 | EAU | 100 | |
| Bachman, Steven | CE Trans Adv | | |
| 001628 (Fmr Bachmar) | EAU | 100 | |
| Vacant-A | CE Trans Entry/Sr | | |
| 301855 | EAU | 100 | |
| Hines, Chad | CE Trans Adv | | |
| 020356 | EAU | 100 | |
| Leech, Jennifer | CE Trans Adv | | |
| 016935 | EAU | 100 | |
| Larson, Jesse | CE Trans Adv | | |
| 004232 | EAU | 100 | |
| Tumaniec, Richard | CE Trans Sr | | |
| 008529 | EAU | 100 | |
| Christ, Aaron | CE Trans Sr | | |

| ACCESS MANAGEMENT | | | |
|-------------------|----------------|-----|--|
| 021446 | EAU | 100 | |
| Proud, Jill | Trans Spec Adv | | |
| 303880 | SPO | 100 | |
| Kusterman, Halle | Trans Spec Adv | | |

| PROGRAMMING | | | |
|-------------------|----------------------|-----|--|
| 015306 | EAU | 100 | |
| Hubbard, Charles | CE Trans Adv | | |
| 002324 | EAU | 100 | |
| Kirk, Randall | CE Trans Adv (LPM) | | |
| 009668 | EAU | 100 | |
| Bruce, Steven | CE Trans Adv | | |
| 022134 | SUP | 100 | |
| Zimmer, Hannah | PPA Adv | | |
| 301528 | EAU | 100 | |
| Smrstick, Timothy | CE Trans Sr | | |
| 001405 | EAU | 100 | |
| Thorsen, Reina | Trans Prog Coord Adv | | |
| 004004 | EAU | 100 | |
| Ming, Nicole | Trans Prog Coord Adv | | |

| MULTIMODAL PLANNING | | | |
|---------------------|---------|-----|--|
| 016908 | SUP | 100 | |
| Ryan, Dena | URP Adv | | |

| CORRIDOR STUDIES | | | |
|------------------|-------------------|-----|--|
| 006831 | EAU | 100 | |
| Bowker, Marc | CE Trans Adv | | |
| TBD (fmr Mclean) | EAU/SUP | | |
| Vacant-A | CE Trans Entry/Sr | | |

| MARKING | | | |
|-----------------|------------------|-----|--|
| 004947 | EAU | 100 | |
| Jansky, Kenneth | Trans Spec Sr | | |
| 020105 | EAU | 100 | |
| Grabara, Jacob | Trans Tech Adv 2 | | |

| MAINTENANCE | | | |
|--------------------|--------------------|-----|--|
| 004462 (fmr Hoefs) | SUP | 100 | |
| Vacant-A | CE Trans Sr or Adv | | |
| 003395 | SPO | 100 | |
| Schmock, Howard | Trans Spec Adv | | |
| 015974 | SUP | 100 | |
| Schaff, Nicholas | Trans Spec Adv | | |
| 006132 | SUP | 100 | |
| Danowski, Dennis | Trans Spec Adv | | |
| 010612 | EAU | 100 | |
| Taylor, Jayne | Financial Spec Sr | | |

| ELECTRICAL | | | |
|-------------------|-------------|-----|--|
| 301524 | EAU | 100 | |
| Culver, Travis | Electrician | | |
| 017810 | EAU | 100 | |
| Bromeisl, Matthew | Electrician | | |
| 012096 | EAU | 100 | |
| Lang, Christopher | Electrician | | |
| 005441 | EAU | 100 | |
| Markert, Brent | Electrician | | |

| SIGNING | | | |
|----------------|---------------|-----|--|
| 022697 | EAU | 100 | |
| Reddy, Matthew | CE Trans Adv | | |
| 014275 | EAU | 100 | |
| Eisold, Gary | Trans Spec Sr | | |
| 009200 | EAU | 100 | |
| Allard, Steven | Trans Spec Sr | | |

| | |
|------|------|
| 0.00 | 9.00 |
| 0.00 | |

| | |
|------|-------|
| 0.00 | 11.00 |
| 1.00 | |

| | |
|------|-------|
| 0.00 | 11.00 |
| 1.00 | |

| | |
|------|------|
| 0.00 | 6.00 |
| 1.00 | |

| | |
|------|------|
| 0.00 | 8.00 |
| 0.00 | |

Last Updated: 4/1/2024

Approved Vacancies

Vacant Not approved

Project Vacancies

| Northwest Regional Director | | |
|-----------------------------|-------------|-----|
| 10-25-00-00-00 | | |
| 020400 | EAU | 100 |
| Mentzel, Jerald | DOT Manager | |

| | | |
|--------------------|---------------|-----|
| 335841 | EAU | 100 |
| O'Brien, Christena | Comm Spec Adv | |

| Regional Deputy Director | | |
|--------------------------|-------------|-----|
| 10-25-00-00-00 | | |
| 003715 | SUP | 100 |
| Pickard, Brent | DOT Manager | |

| NW Project Development Section | | |
|--------------------------------|---------------|-----|
| 10-25-25-00-00 | | |
| 006147 | EAU/SUP | 100 |
| Weiss, Tara | DOT Eng Chief | |

| NW Project Development Section | | |
|--------------------------------|---------------|-----|
| 10-25-26-00-00 | | |
| 004603 | EAU | 100 |
| Conlin, Paul | DOT Eng Chief | |

| NW PDS Unit 1 | | |
|--------------------|---------------|-----|
| 10-25-25-10-00 | | |
| 338614 | SUP | 100 |
| Van Natta, Matthew | CE Trans Supv | |

| NW PDS Unit 2 | | |
|----------------|---------------|-----|
| 10-25-25-20-00 | | |
| 004833 | EAU | 100 |
| Yang, Tou | CE Trans Supv | |

| NW PDS Unit 3 (Project Management Unit) | | |
|---|---------------|-----|
| 10-25-25-30-00 | | |
| 012696 | EAU | 100 |
| Koepp, David | CE Trans Supv | |

| NW PDS Unit 4 (Project Scoping Unit) | | |
|--------------------------------------|---------------|-----|
| 10-25-26-40-00 | | |
| 014604 | EAU | 100 |
| Passuello, Nicole | CE Trans Supv | |

| NW PDS Unit 5 (Program Controls Unit) | | |
|---------------------------------------|---------------|-----|
| 10-25-26-50-00 | | |
| 004984 | EAU | 100 |
| Koenig, James | CE Trans Supv | |

| NW PDS Unit 6 (Consultant Unit) | | |
|---------------------------------|---------------|-----|
| 10-25-26-60-00 | | |
| 001251 | SUP | 100 |
| Jeffrey Olson | CE Trans Supv | |

| | | |
|------------------------|--------------|-----|
| 010705 | SUP | 100 |
| Dickenson, Matthew | CE Trans Adv | |
| 007422 | SUP | 100 |
| Berg, Matthew | CE Trans Adv | |
| Endres, Mickale | CE Trans Adv | |
| 028910 (fmr VanNatta) | SUP | 100 |
| Vacant-A | CE Trans Adv | |
| 002038 | SUP | 100 |
| Bukovitz, Caitlin | CE Trans Sr | |
| 000172 | SUP | 100 |
| Finnegan, Mitchell | CE Trans Sr | |
| 010171 | SUP | 100 |
| Pekuri, Alanna | CE Trans Sr | |
| 301614 | SUP | 100 |
| Hauser, Stephen | CE Trans | |
| 338605 (Fmr Martin, C) | SUP | 100 |
| Vacant | CE Trans | |

| LOCAL PROGRAM | | |
|-------------------------|--------------|-----|
| 015872 | GRE | 100 |
| Berg, Matthew | CE Trans Adv | |
| 015381 | EAU | 100 |
| Groom, Paula | CE Trans Adv | |
| 001389 (Sanchez, Vidar) | SUP | 100 |
| Vacant-A | CE Trans Sr | |
| 001159 | EAU | 100 |
| Davis, Teresa | CE Trans Sr | |

| PROJECT MANAGEMENT | | |
|---------------------|----------------|-----|
| 004458 | EAU | 100 |
| Munden, Allissa | CE Trans Sr | |
| 018117 | EAU | 100 |
| Oldenburg, Jennifer | Trans Spec Adv | |

| PROJECT SCOPING | | |
|-----------------|--------------|-----|
| 001555 | EAU | 100 |
| Sarauer, Adam | CE Trans Adv | |
| 014424 | EAU | 100 |
| Kopacz, Karl | CE Trans Sr | |

| PROGRAM CONTROLS | | |
|----------------------|--------------------|-----|
| 005768 (Fmr Yang, T) | EAU | 100 |
| Vacant-A | CE Trans Adv | |
| 016935 (Fmr William) | SUP | 100 |
| Vacant-A | CE Trans Sr or Adv | |
| 335838 | EAU | 100 |
| Maren, Ryan | PPA Adv | |

| CONTRACT SUPPORT | | |
|-----------------------|--------------------|------|
| 313634 (fmr Hubbard) | EAU | 100 |
| Vacant-A | CE Trans Adv | |
| 319852 | EAU | 100 |
| Barnes, Rolanda | Contracts Spec Adv | |
| 005662 | EAU | 100 |
| Lehmann, Stacy | Contracts Spec | |
| 019736 | EAU | 100 |
| Foster, Denise | Contracts Spec Adv | |
| 525023 | SUP | 100P |
| Protokowicz, Adrienne | Contracts Spec Sr | |
| 524649 | SUP | 100P |
| Saari, Michelle | Contracts Spec Sr | |

| | | |
|--------------------------|--------------|-----|
| 012382 | SPO | 80 |
| Cunningham, Beth Ann | CE Trans Adv | |
| 311882 (Fmr Lambele, St) | EAU | 100 |
| Vacant-A | CE Trans Adv | |
| 301614 (Fmr Dague) | SUP | 100 |
| Vacant-A | CE Trans Adv | |
| 020360 | SPO | 100 |
| Becklin, Matthew | CE Trans Sr | |
| 002549 | SUP | 100 |
| Brenden, Michael | CE Trans Sr | |
| 320203 | SUP | 100 |
| Maki, Nicholas | CE Trans | |

| | | |
|-------------------------------|----------------|------|
| 029066 | EAU | 100 |
| Hayek, Mohammad | CE Trans Adv | |
| 007301 | EAU | 100 |
| McLean, Kyle | CE Trans Adv | |
| 021164 | EAU | 100 |
| Pelkofer, Tyson | CE Trans Adv | |
| TBD (Fmr Aaron Christ) | EAU/SUP | 100 |
| Vacant-A | CE Trans Adv | |
| 006896 (fmr Pitsch, Nicholas) | EAU | 100 |
| Vacant-A | CE Trans Sr | |
| 013089 | EAU | 100 |
| Uehling, Andrew | CE Trans Sr | |
| 001886 | SUP | 80 |
| King, Stephanie | CE Trans Sr | |
| 311813 | SUP | 100 |
| Hogquist, Adam | CE Trans Sr | |
| 031288 | EAU | 100 |
| Krug, Gary | Trans Spec Adv | |
| 318290 | SUP | 100 |
| Graham, Brandi | Trans Spec Sr | |
| 524788 | SUP | 100P |
| Peterman, Jill | Trans Spec Adv | |

| | | |
|----------------------------|--------------|-----|
| 338615 | EAU | 100 |
| Doud, Jessica | CE Trans Sr | |
| 338618 (Fmr Larson, Jesse) | EAU | 100 |
| Vacant-A | CE Trans Adv | |
| 020031 | EAU | 100 |
| Rongstad, Tyler | CE Trans Adv | |
| 028910 | EAU | 100 |
| Rambo, Daniel | CE Trans Adv | |
| 017840 | EAU | 100 |
| Thao, Kou | CE Trans Sr | |
| 018779 | EC | 100 |
| Budden, Lucas | CE Trans Sr | |
| 02682 | EAU | 100 |
| Rinzel, James | CE Trans Sr | |
| 021785 | EAU | 100 |
| Miner, Stephanie | CE Trans Sr | |
| 022710 | EAU | 100 |
| Sackett, Henry | CE Trans | |
| 338624 | EAU | 100 |
| Klages, Jacob | CE Trans | |
| 002028 | EAU | 100 |
| Erickson, Sarah | CE Trans | |

| | | |
|-------------------------|----------------|------|
| 001628 | EAU | 100 |
| Pitsch, Nicholas | CE Trans Adv | |
| 005820 | EAU | 100 |
| Ulness, Nathan | CE Trans Adv | |
| 019179 (fmr Rambo) | EAU | 100 |
| Vacant-A | CE Trans Sr | |
| 338617 (fmr Hetrick, A) | EAU | 100 |
| Vacant-A | CE Trans Adv | |
| 002417 | EAU | 100 |
| Sturgis, Adam | CE Trans Sr | |
| 009502 (Fmr Curtis) | SUP | 100 |
| Vacant | CE Trans Sr | |
| 338687 | EAU | 100 |
| Sebranek, Jacob | CE Trans | |
| 524796 | SUP | 100P |
| Jensen, Kevin | Trans Spec Adv | |

| | | |
|-----------------------|--------------|-----|
| 320220 | SUP | 100 |
| Keppers, Philip | CE Trans Adv | |
| TBD (Fmr Greg Pesola) | SUP | 100 |
| Vacant-A | CE Trans Adv | |
| 004322 | SUP | 100 |
| Pearson, Michael | CE Trans Sr | |
| 018253 | SUP | 100 |
| Mattson, Brian | CE Trans Sr | |

| | |
|------|------|
| 1.00 | 7.00 |
| 1.00 | |
| 0.00 | |

| | |
|------|------|
| 0.00 | 8.80 |
| 3.00 | |
| 0.00 | |

| | |
|------|-------|
| 0.00 | 10.80 |
| 2.00 | 1 |
| 0.00 | |

| | | |
|------|------|-------|
| 3.00 | 0.00 | 13.00 |
| | 1.00 | |
| | 0.00 | |

| | |
|------|------|
| 1.00 | 7.00 |
| 4.00 | 1 |
| 0.00 | |

| | |
|------|------|
| 0.00 | 7.00 |
| 2.00 | 2 |
| 0.00 | |