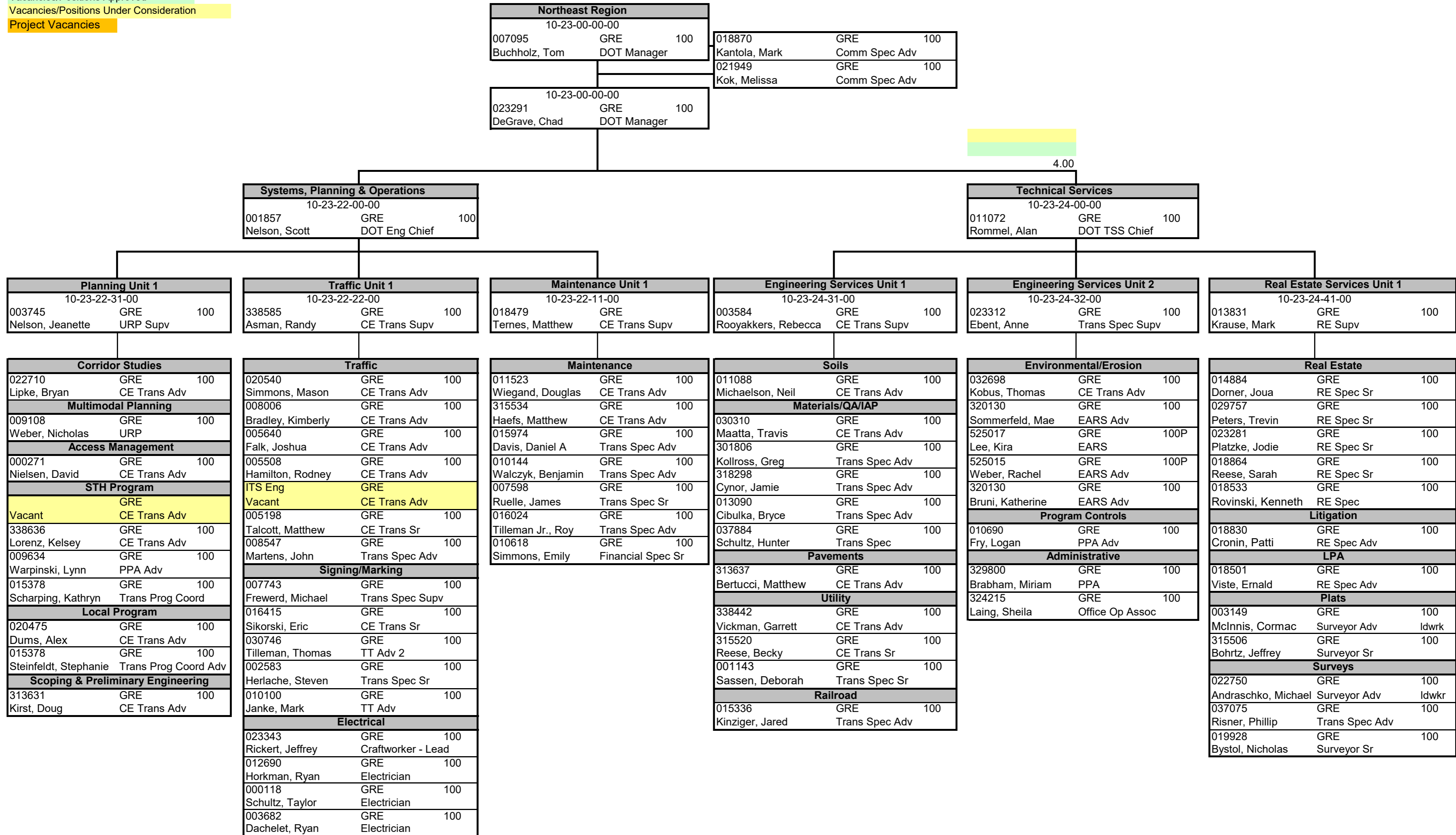


5/2/2024

Vacancies/Positions Approved
 Vacancies/Positions Under Consideration
 Project Vacancies



1 10.00
0

1 17.00
0

0 7.00
0

0 12.00
0

0 8.00
0 2
0

0 13.00
0

Vacancies/Positions Approved
 Vacancies/Positions Under Consideration

Northeast Region		
007095	10-23-00-00-00	GRE
Buchholz, Thomas		DOT Manager

023291	10-23-00-00-00	GRE
Degrave, Chad		DOT Manager

Project Development Section 1		
002807	10-23-26-00-00	GRE 100
Rank, Tim		DOT Eng Chief

Project Development Section 2		
006725	10-23-27-00-00	GRE 100
Peters, Kurt		DOT Eng Chief

NE PDS Unit 1		
016877	10-23-26-10-00	GRE 100
Segerstrom, Daniel		CE Trans Supv

NE PDS Unit 2		
012631	10-23-26-20-00	GRE 100
Wagner, Robert		CE Trans Supv

NE PDS Unit 4		
338580	10-23-26-40-00	GRE 100
Fulcer, Andrew		CE Trans Supv

NE PDS Unit 5		
007025	10-23-26-50-00	GRE 100
Edwards, Brian		CE Trans Supv

NE PDS Unit 8		
338581	10-23-27-40-00	GRE 100
Rabe, Tammy		CE Trans Supv

NE PDS Unit 7		
015082	10-23-27-20-00	GRE 100
Gwidt, Eric		CE Trans Supv

018814	GRE	100
Ebel, Scott	CE Trans Adv	
009671	GRE	100
Trembl, Kyle	CE Trans Adv	
320126	GRE	100
Learst, Bryan	CE Trans Adv	
016080	GRE	100
Verhagen, Tim	CE Trans Adv	

338635	GRE	100
Haen, Brian	CE Trans Adv	
015927	GRE	100
Brauer, Paul	CE Trans Adv	
320212	GRE	100
Berg, Kristen	CE Trans Adv	
016968	GRE	100
Ericson, Sarah	CE Trans Sr	
(Martin)	GRE	
Vacant	CE Trans Sr	
002157	GRE	100
Geurts, Jason	CE Trans Sr	
(Berg)	GRE	
Vacant	CE Trans Sr	
(Spielmacher)	GRE	
Vacant	CE Trans Sr	
11732	GRE	100
Gombar, Cleveland	CE Trans Sr	
(Maatta)	GRE	
Vacant	CE Trans /Sr	
012808	GRE	100
Kozloski, Pamela	Trans Spec Adv	
327208	GRE	100
Kamps, Tracy	Trans Spec Sr	
017727	GRE	100
Kamps, Benjamin	CE Trans	
(Hardy)	GRE	
Vacant	Trans Spec Adv	
030746	GRE	100
Piton, Anthony	Trans Spec Sr	

Preliminary Engineering		
338448	GRE	100
Hilbert, Jill	CE Trans Adv	
016126	GRE	100
Schwab, Jillian	CE Trans Sr	
338680	GRE	100
Slezak, Kimberly	CE Trans Adv	
338700	GRE	100
Erdmann, Ryan	CE Trans Adv	
019105	GRE	100
Nelson, Patti	CE Trans Sr	
313624	GRE	100
Miller, Elizabeth	CE Trans	
338441 - June hire	GRE	100
Brooks, Boden	CE Trans	
Plans Production		
21443	GRE	100
Martin, Thomas	Trans Spec Adv	ldwkr
021443	GRE	
Vacant	Trans Spec Sr	
002325	GRE	100
Campshure, Michael	Trans Spec Sr	
019845	GRE	100
Smith, Jennifer	Trans Spec Sr	
011118	GRE	100
Rohe, Justin	Trans Spec Sr	
016822	GRE	100
Thibodeau Dana, Shar	Trans Spec Sr	

021682	GRE	100
Vang, Maiko	Contracts Spec Adv	
018224	GRE	100
Veeser, Brenda	Contracts Spec Adv	
014404	GRE	100
Roberts, Janice	Contract Spec Sr	
010330	GRE	100
Debaere, Laura	Contracts Spec Sr	
525024	GRE	100P
Beaumier, Deanne	Contracts Spec Sr	
006861	GRE	100
VanHout, Kristin	CE Trans Adv	
315526	GRE	100
Lang, Josh	CE Trans Adv	
320218	GRE	100
Farrell, Alan	CE Trans Sr	
338621	GRE	100
Bradley, Samuel	CE Trans	
030892	GRE	100
Vang, Longchen	CE Trans	

Local Program		
338677	GRE	100
Vogel, Kurt	CE Trans Adv	
005935	GRE	100
Cohen, Michael	CE Trans Adv	
031082	GRE	100
Jarosinski, Jodi	CE Trans Adv	
524789	GRE	100P
Schwartz, Katie	CE Trans Adv	
301622	GRE	100
Hoefflerle, Edward	CE Trans Sr	
333891	GRE	100
Jardaneh, Mutasem	CE Trans Sr	
(Cibulka)	GRE	
Vacant-A	Trans Spec Sr	

004459	GRE	100
Bertrand, William	CE Trans Adv	
002462	GRE	100
Hansen, Jesse	CE Trans Adv	
007378	GRE	100
Danke, Eric	CE Trans Sr	
338449	GRE	100
Witte, Kyle	CE Trans Sr	
(Erdmann)	GRE	
Vacant-A	CE Trans/ Sr	
(Hilbert)	GRE	
Vacant	CE Trans/ Sr	
(Roesler)	GRE	
Vacant	CE Trans Sr	
012288	GRE	100
Holmes, Kelsey	CE Trans Sr	
012805	GRE	100
Heiden, Brian	CE Trans Sr	
000379	GRE	100
Wong, Keanu	CE Trans	
313624	GRE	100
Holland, Drew	CE Trans	
005761	GRE	100
Hetchler, Justin	CE Trans	
014003	GRE	100
Baierl, Kenneth	Trans Spec Adv	
002583	GRE	100
Steinmetz, Cameron	Trans Spec	

(Maternoski)	GRE	
Vacant	CE Trans Sr	
338451	GRE	100
Scherer, Megan	CE Trans Sr	
021301	GRE	100
Bartz, Jeremy	CE Trans Sr	
004100	GRE	100
Brattlund, Erik	CE Trans Sr	
338679	GRE	100
Deneys, Kristopher	CE Trans Sr	
(Lnag)	GRE	
Vacant	CE Trans Sr	
011359	GRE	100
O'Connor, Callum	CE Trans Sr	
(Bradley)	GRE	
Vacant	CE Trans Sr	
010675	GRE	100
Williams, Geoffrey	CE Trans Sr	
011535	GRE	100
Eck, Kaitlyn	CE Trans Sr	
005560	GRE	100
Getlinger, Bradley	CE Trans	

5	11.00
0	

1	13.00
0	

0	11.00
0	1
0	

0	6.00
0	1
0	

2	12.00
1	0

3	10.00
0	0

0	4.00
0	0