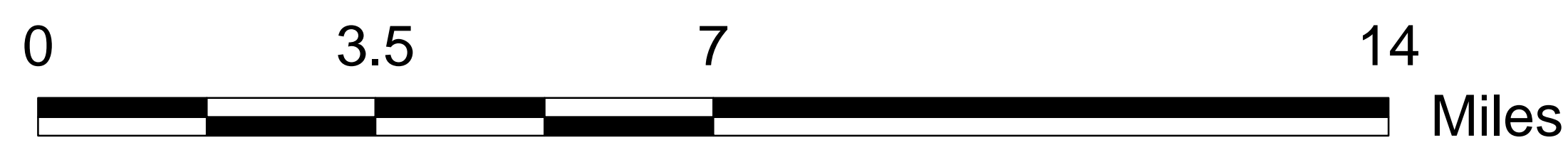
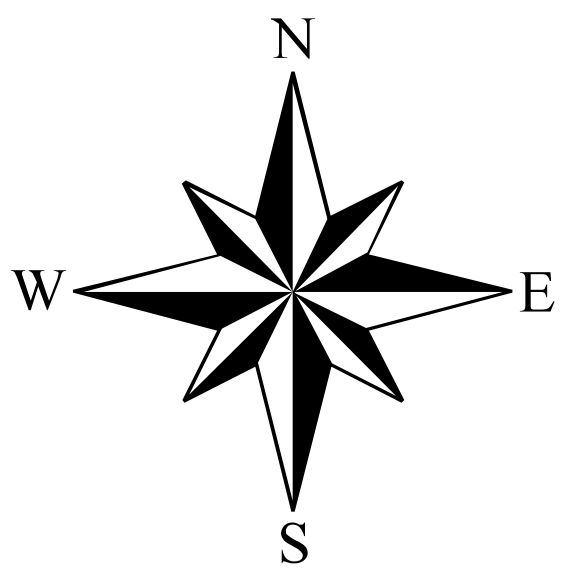
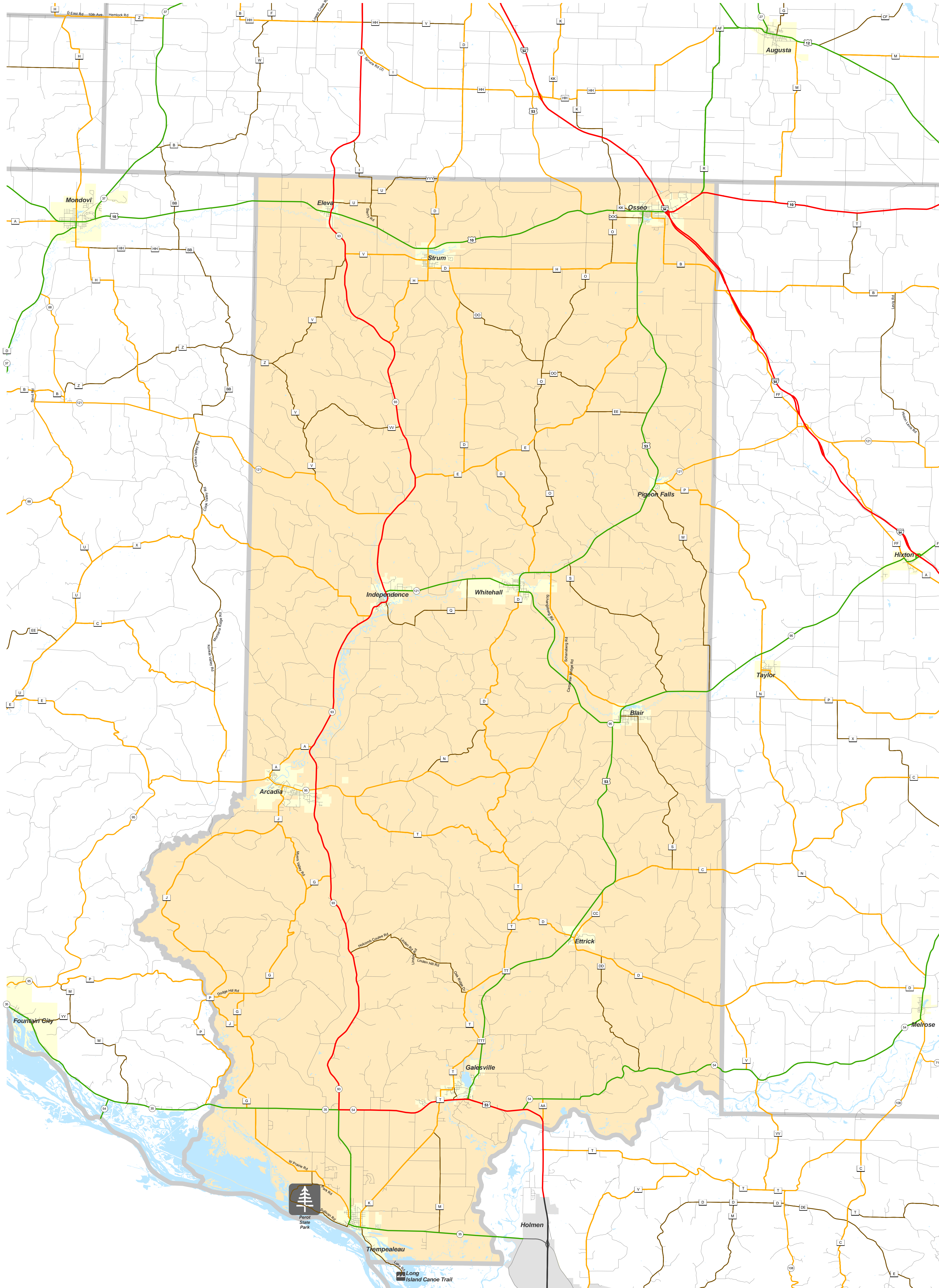


# TREMPEALEAU

## Functional Classification 06/01/2012

TREMPEALEAU



Legend	
<b>Existing</b>	<b>Planned</b>

(In urban areas, only connecting links of rural routes are shown.)

The information on these maps and produced from these maps was created for the official use of the Wisconsin Department of Transportation (WisDOT). Any other use, while not prohibited, is the sole responsibility of the user. WisDOT expressly disclaims all liability regarding fitness of use of the information for other than official WisDOT business.

# TREMPEALEAU

## Chart “C” Communities

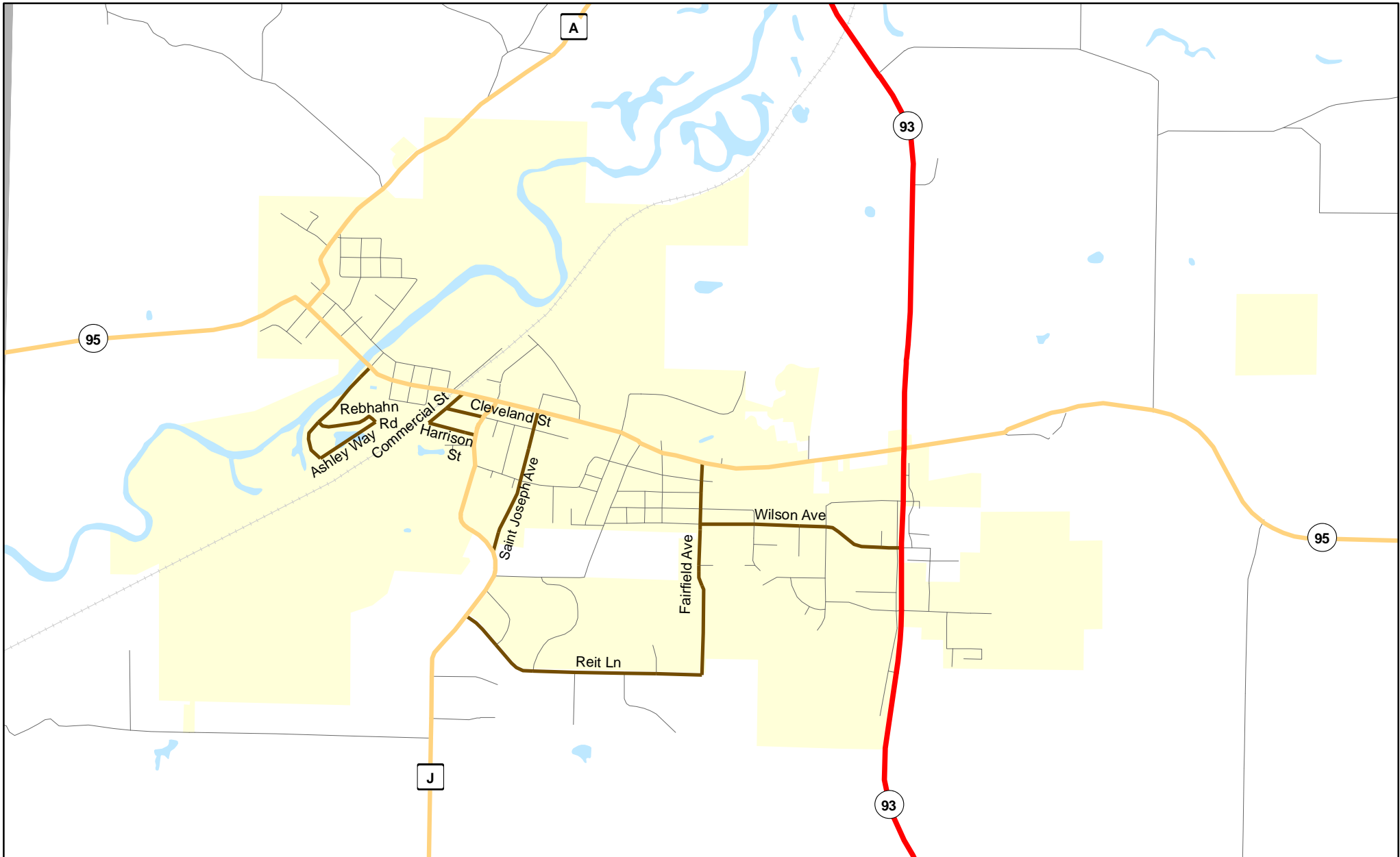
### Page

- 3 Arcadia
- 4 Blair
- 5 Ettrick
- 6 Galesville
- 7 Independence
- 8 Osseo
- 9 Whitehall



# Chart C Community: ARCADIA County: Trempealeau

Functional Classification 06/01/2012



### Functional Classification

- Principal Arterial
- Minor Arterial
- Major Collector
- Minor Collector
- Chart C Minor Collector
- planned Principal Arterial
- planned Minor Arterial
- planned Major Collector
- planned Minor Collector

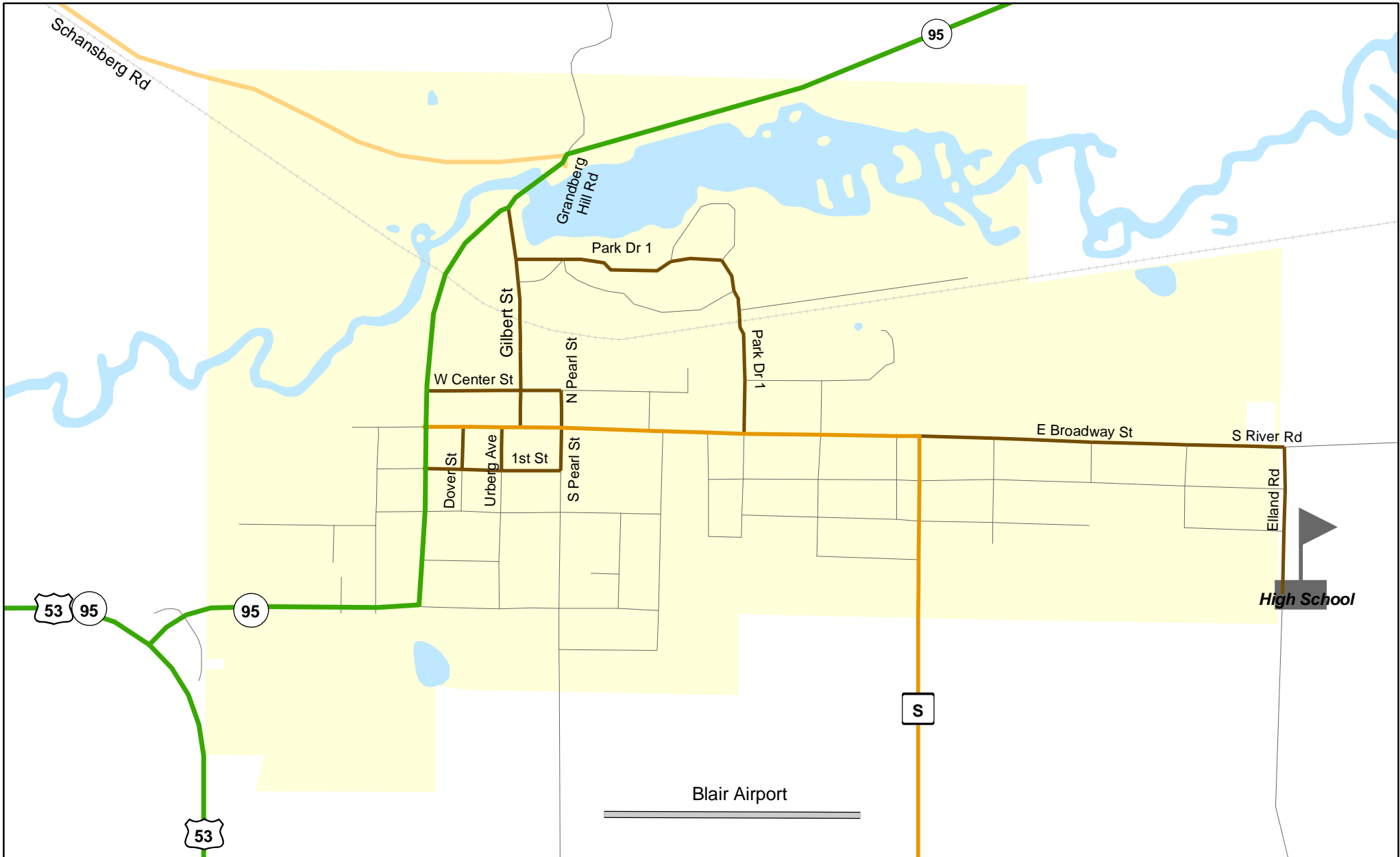
WisDOT Bureau of Planning and Economic Development  
FHWA approval: 06/01/2012  
PDF created: 02/03/2012

**Chart C Community: ARCADIA**  
**County: Trempealeau**



**Chart C Community: BLAIR**  
**County: Trempealeau**

**Functional Classification**      **06/01/2012**



**Functional Classification**

- Principal Arterial
- Minor Arterial
- Major Collector
- Minor Collector
- Chart C Minor Collector
- - - planned Principal Arterial
- - - planned Minor Arterial
- - - planned Major Collector
- - - planned Minor Collector

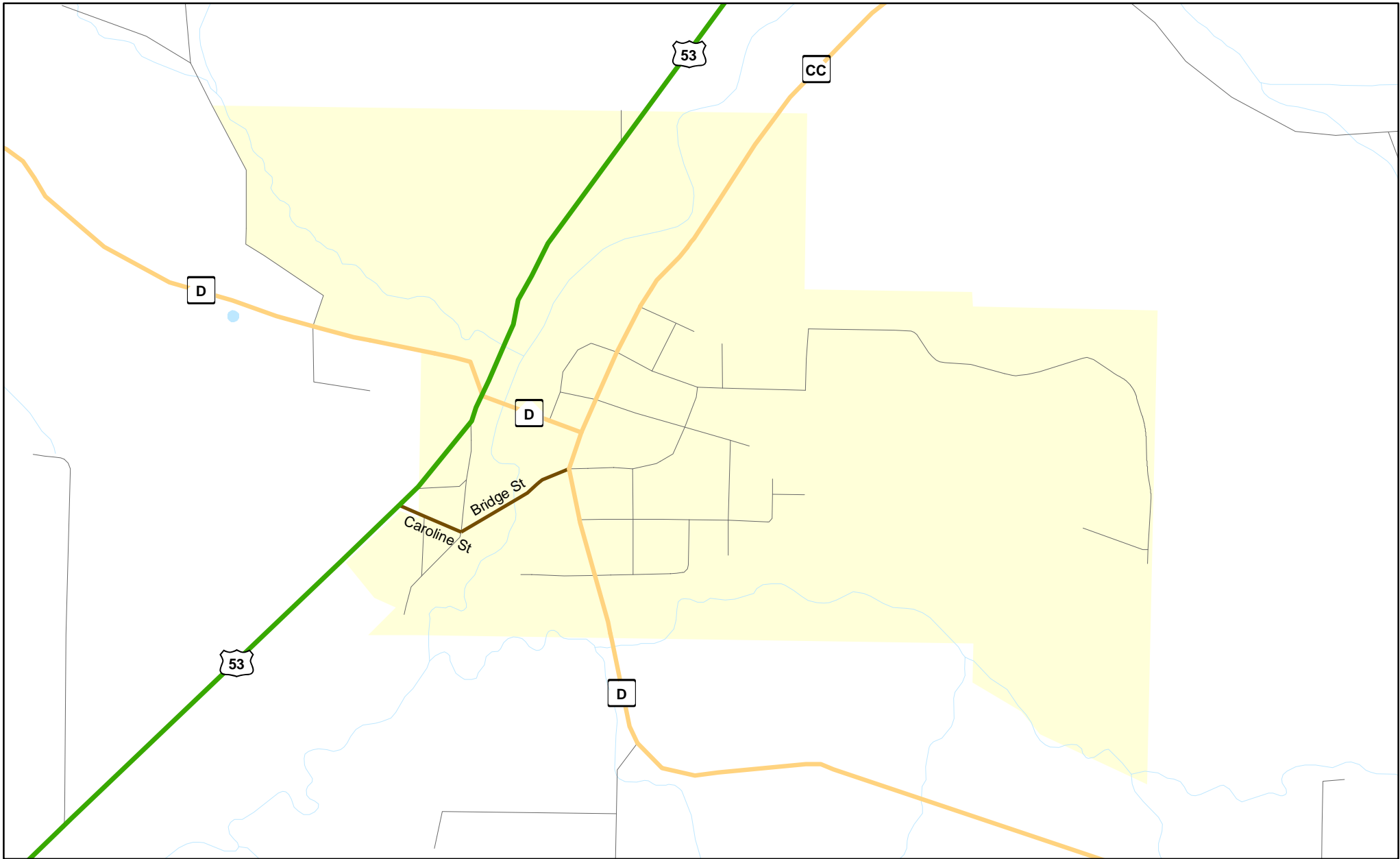
WisDOT Bureau of Planning and Economic Development  
FHWA approval: 06/01/2012  
PDF created: 02/03/2012

**Chart C Community: BLAIR**  
**County: Trempealeau**



**Chart C Community: ETRICK**  
**County: Trempealeau**

**Functional Classification**      **06/01/2012**



**Functional Classification**

- |                            |                        |                         |                         |                         |
|----------------------------|------------------------|-------------------------|-------------------------|-------------------------|
| Principal Arterial         | Minor Arterial         | Major Collector         | Minor Collector         | Chart C Minor Collector |
| planned Principal Arterial | planned Minor Arterial | planned Major Collector | planned Minor Collector |                         |

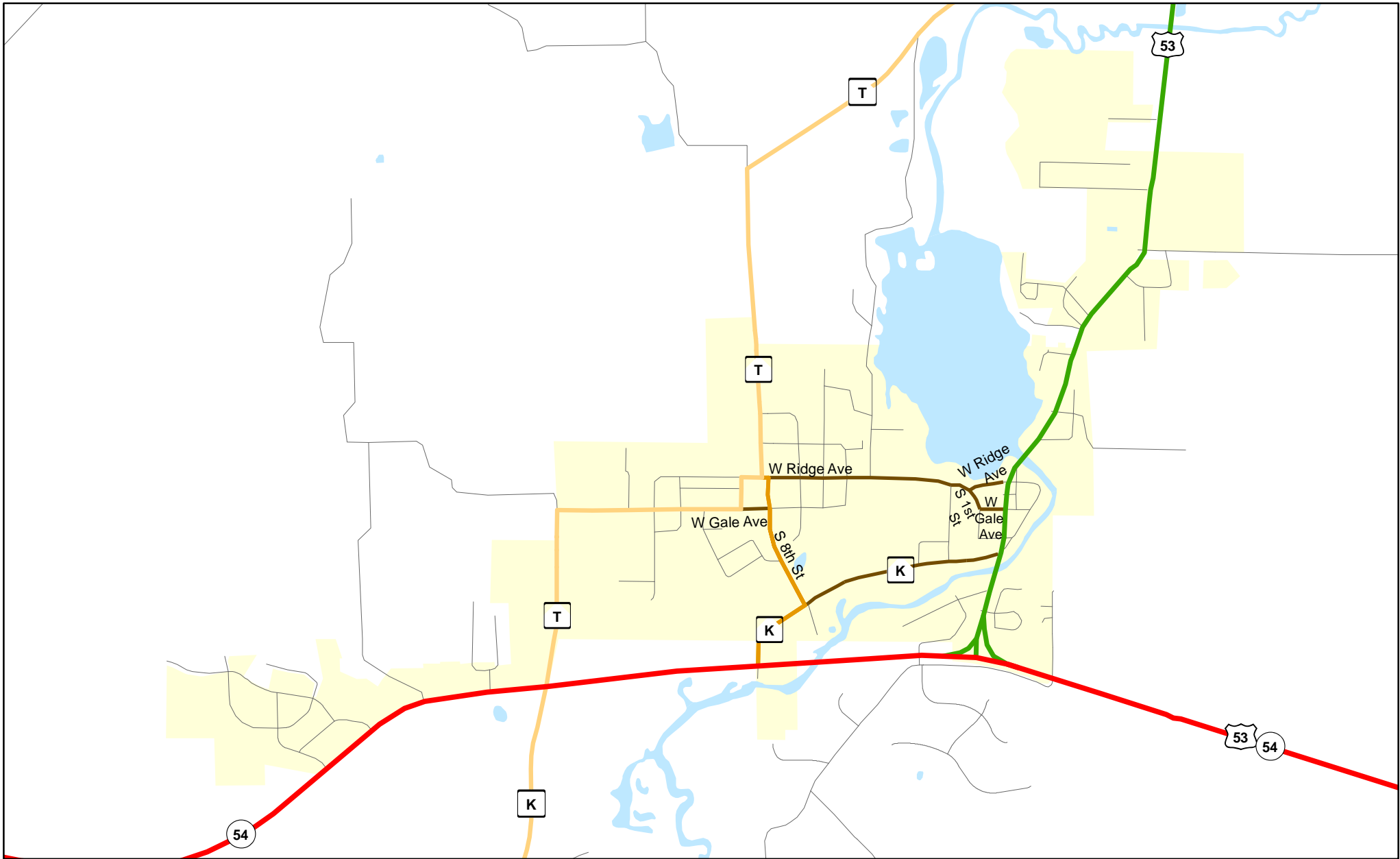
WisDOT Bureau of Planning and Economic Development  
FHWA approval: 06/01/2012  
PDF created: 02/03/2012

**Chart C Community: ETRICK**  
**County: Trempealeau**



**Chart C Community: GALESVILLE**  
**County: Trempealeau**

**Functional Classification 06/01/2012**



**Functional Classification**

- Principal Arterial
- Minor Arterial
- Major Collector
- Minor Collector
- Chart C Minor Collector
- - - planned Principal Arterial
- - - planned Minor Arterial
- - - planned Major Collector
- - - planned Minor Collector

WisDOT Bureau of Planning and Economic Development  
FHWA approval: 06/01/2012  
PDF created: 02/03/2012

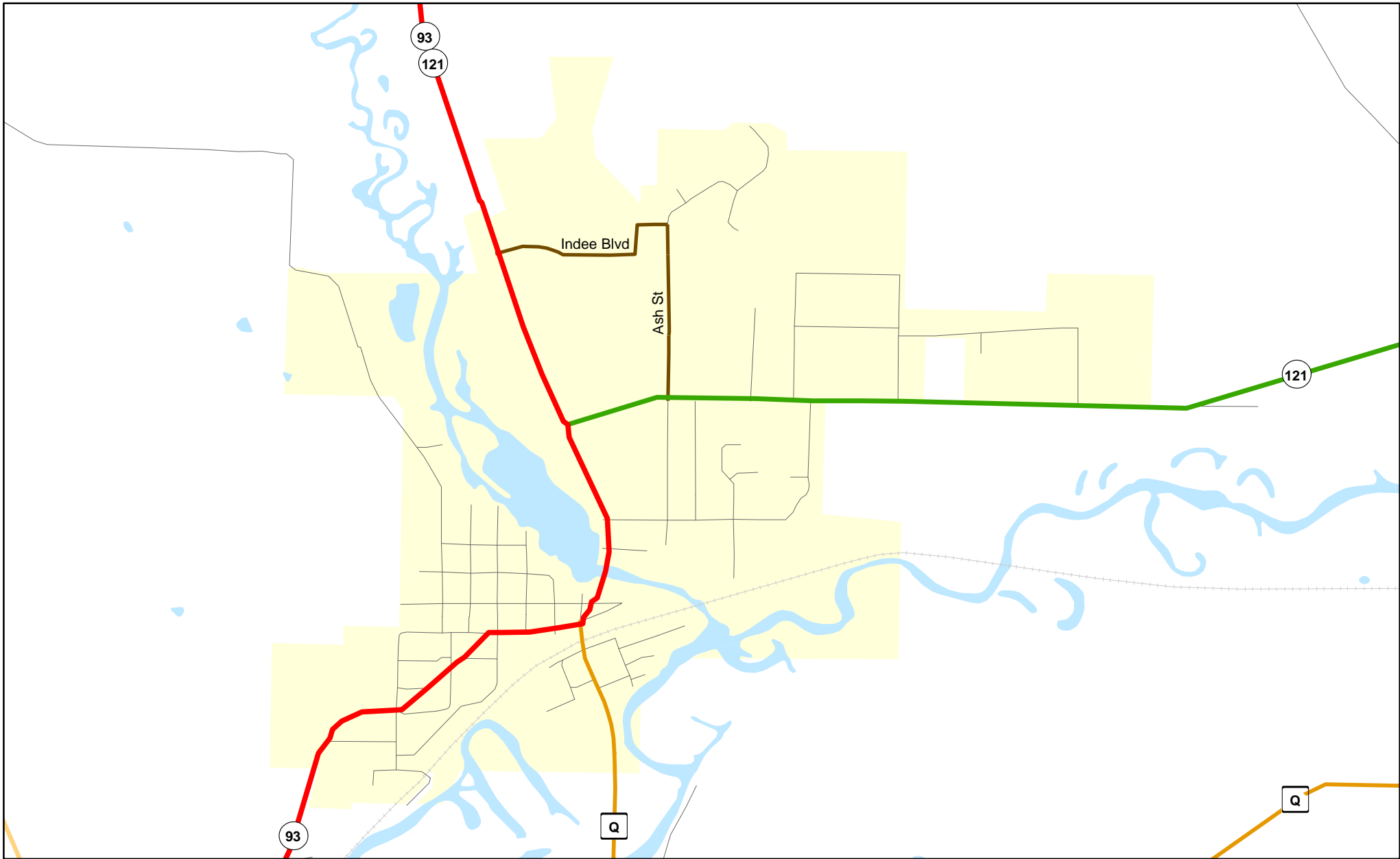
**Chart C Community: GALESVILLE**  
**County: Trempealeau**



# Chart C Community: INDEPENDENCE

County: Trempealeau

Functional Classification 06/01/2012



## Functional Classification

- Principal Arterial
- Minor Arterial
- Major Collector
- Minor Collector
- Chart C Minor Collector
- planned Principal Arterial
- planned Minor Arterial
- planned Major Collector
- planned Minor Collector

WisDOT Bureau of Planning and Economic Development  
FHWA approval: 06/01/2012  
PDF created: 02/03/2012

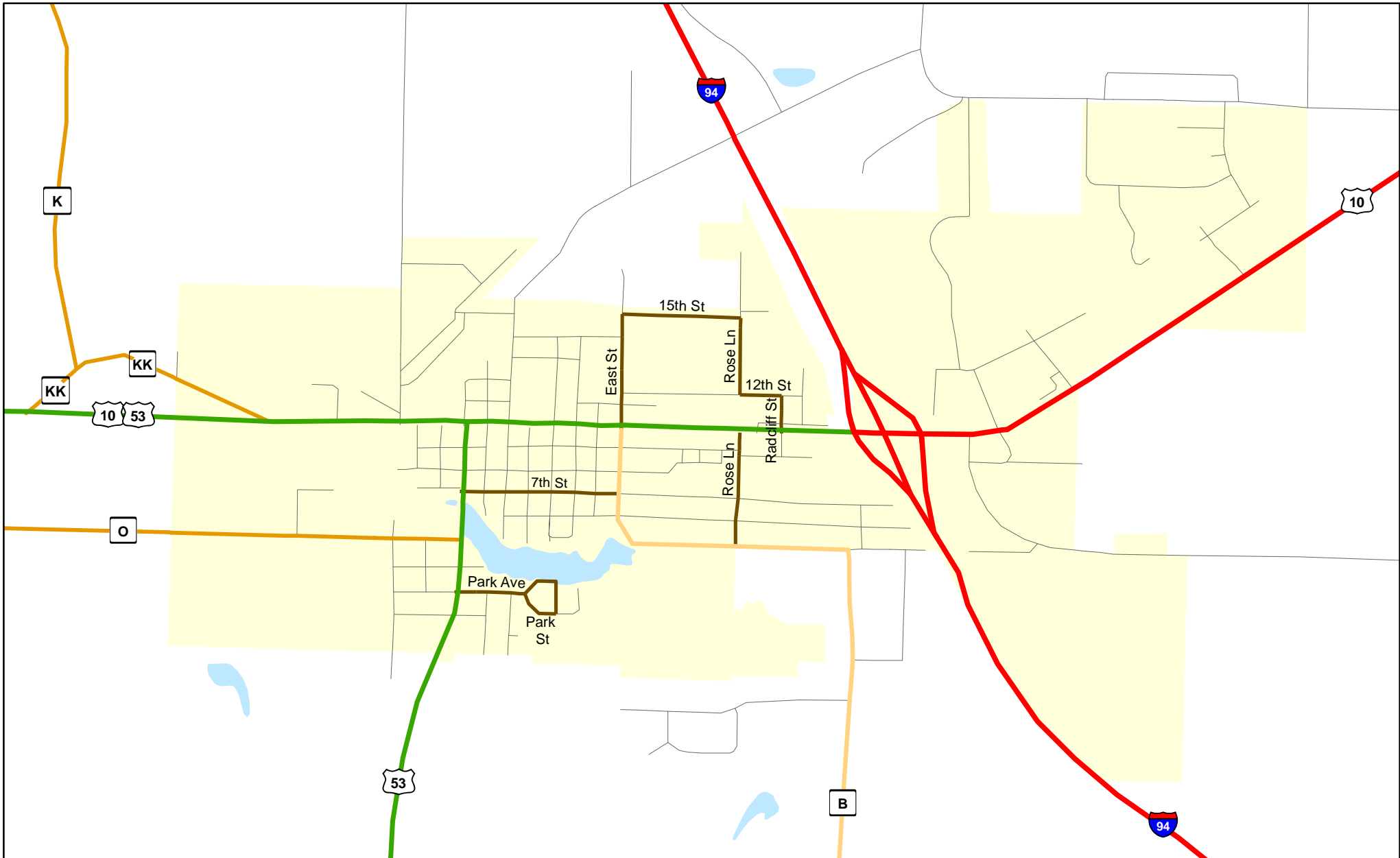
**Chart C Community: INDEPENDENCE**  
**County: Trempealeau**



**Chart C Community: OSSEO**  
**County: Trempealeau**

**Functional Classification**

**06/01/2012**



**Functional Classification**

- Principal Arterial
- Minor Arterial
- Major Collector
- Minor Collector
- Chart C Minor Collector
- - - planned Principal Arterial
- - - planned Minor Arterial
- - - planned Major Collector
- - - planned Minor Collector

WisDOT Bureau of Planning and Economic Development  
FHWA approval: 06/01/2012  
PDF created: 02/03/2012

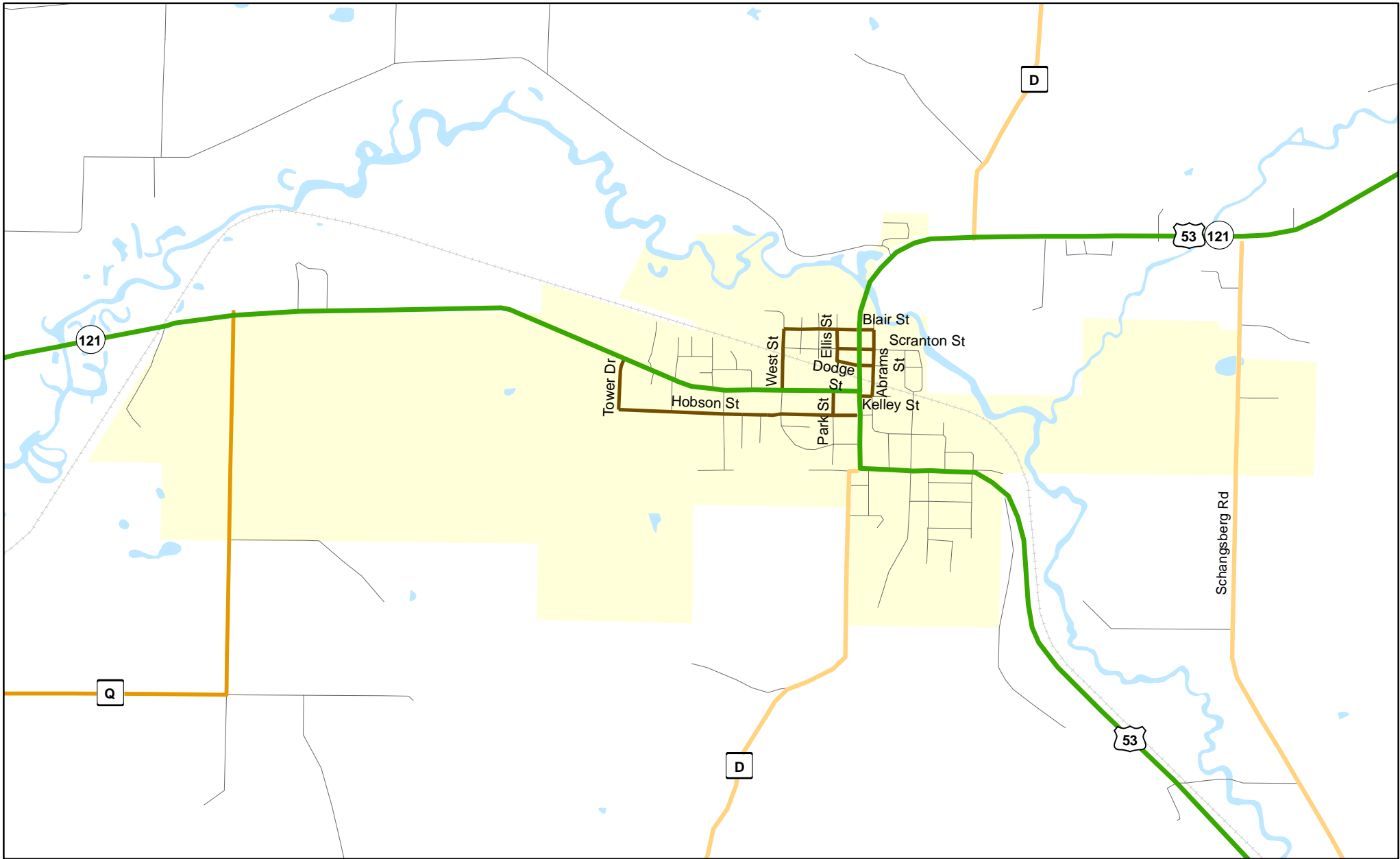
**Chart C Community: OSSEO**  
**County: Trempealeau**





Chart C Community: WHITEHALL  
County: Trempealeau

Functional Classification 06/01/2012



**Functional Classification**

- Principal Arterial
- Minor Arterial
- Major Collector
- Minor Collector
- Chart C Minor Collector
- - - planned Principal Arterial
- - - planned Minor Arterial
- - - planned Major Collector
- - - planned Minor Collector

WisDOT Bureau of Planning and Economic Development  
FHWA approval: 06/01/2012  
PDF created: 02/03/2012

**Chart C Community: WHITEHALL**  
**County: Trempealeau**