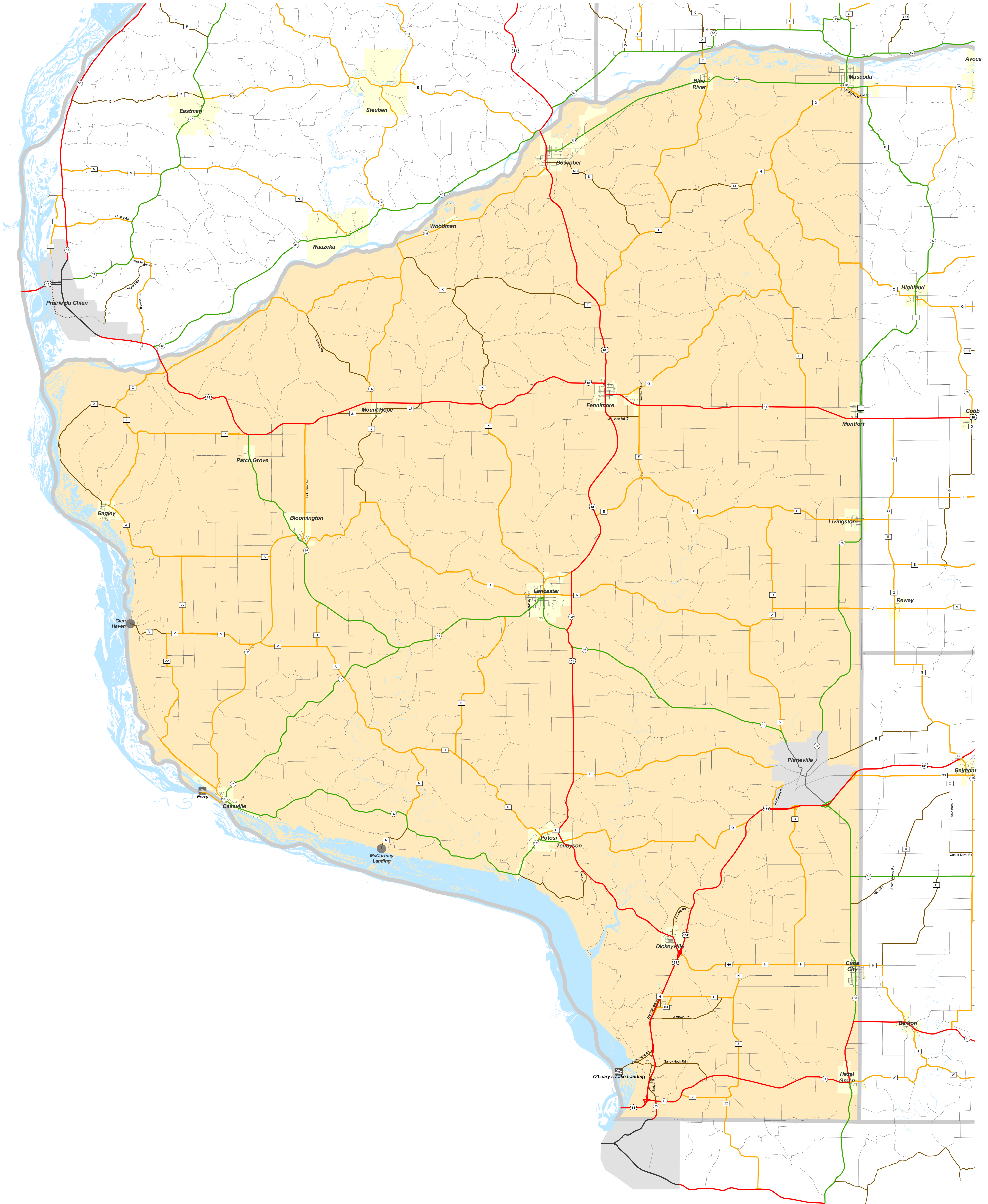


GRANT

Functional Classification

03/06/2012

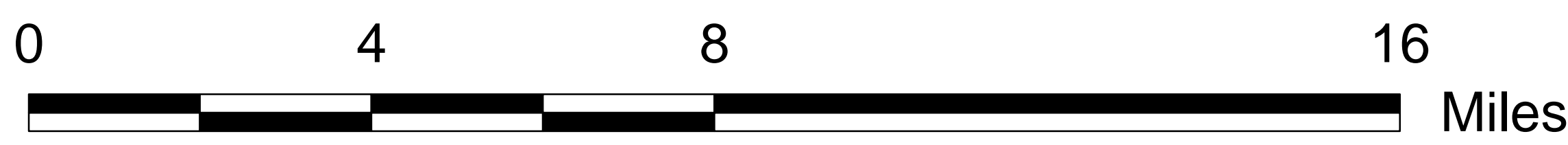
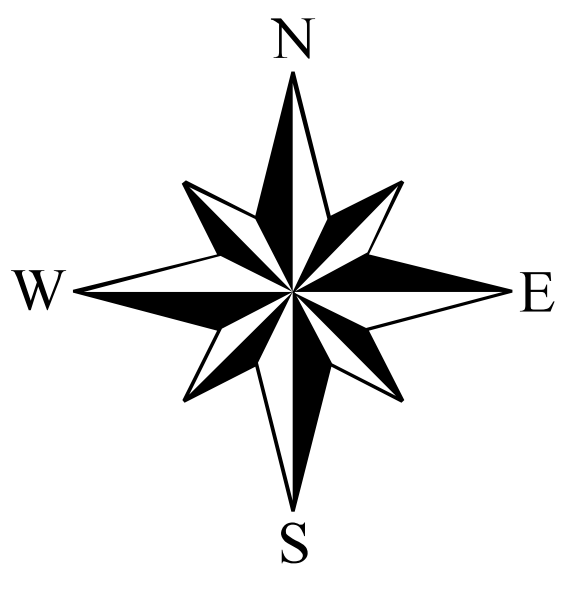
GRANT



Legend

Existing	Planned	Other

(In urban areas, only connecting links of rural routes are shown.)



The information on these maps and produced from these maps was created for the official use of the Wisconsin Department of Transportation (WisDOT). Any other use, while not prohibited, is the sole responsibility of the user. WisDOT expressly disclaims all liability regarding fitness of use of the information for other than official WisDOT business.

GRANT

Chart “C” Communities

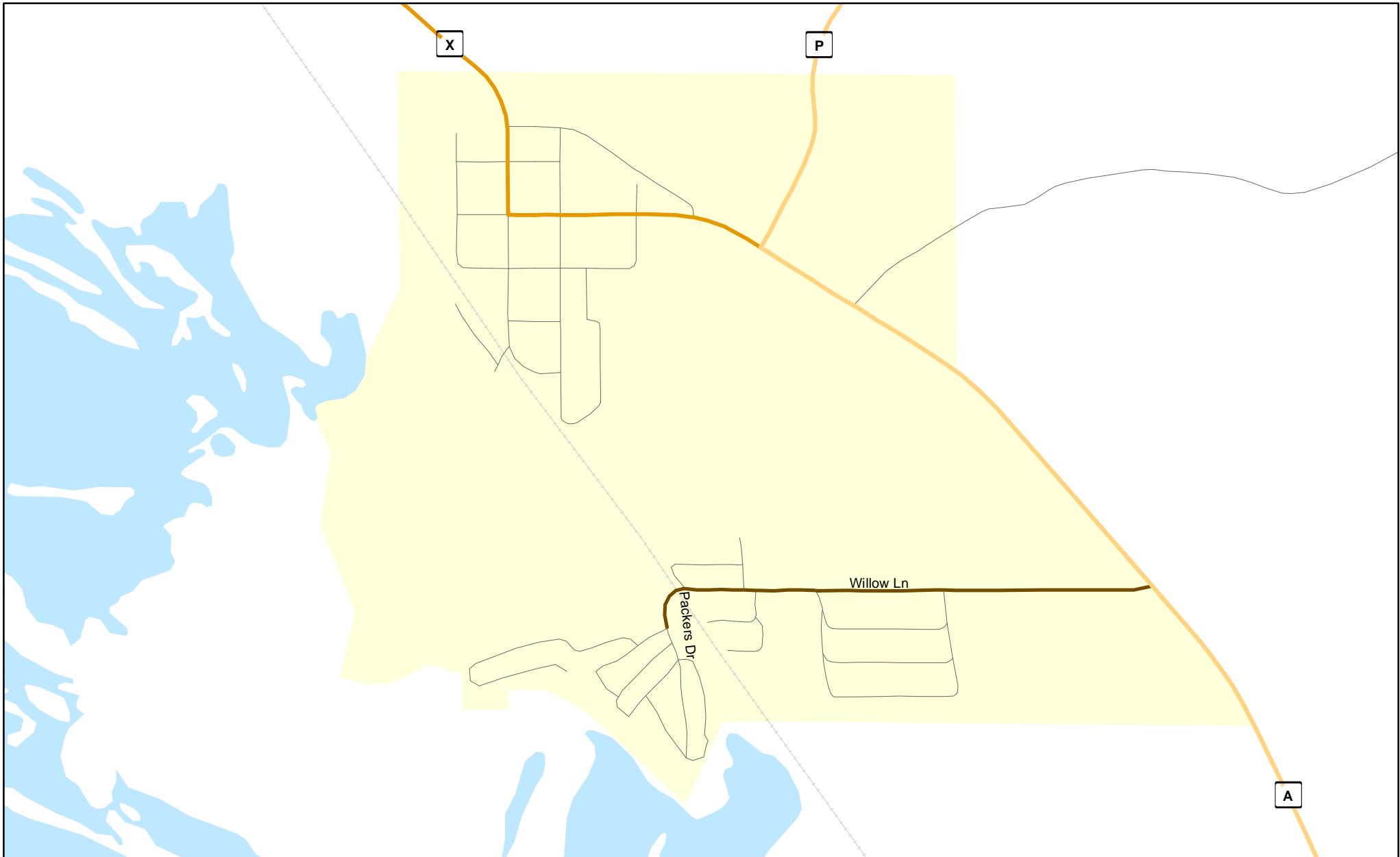
Page

3	Bagley
4	Boscobel
5	Cuba City
6	Fennimore
7	Hazel Green
8	Lancaster
9	Montfort
10	Muscoda



Chart C Community: BAGLEY
County: Grant

Functional Classification **03/06/2012**



Functional Classification

- | | | | | |
|----------------------------|------------------------|-------------------------|-------------------------|-------------------------|
| Principal Arterial | Minor Arterial | Major Collector | Minor Collector | Chart C Minor Collector |
| planned Principal Arterial | planned Minor Arterial | planned Major Collector | planned Minor Collector | |

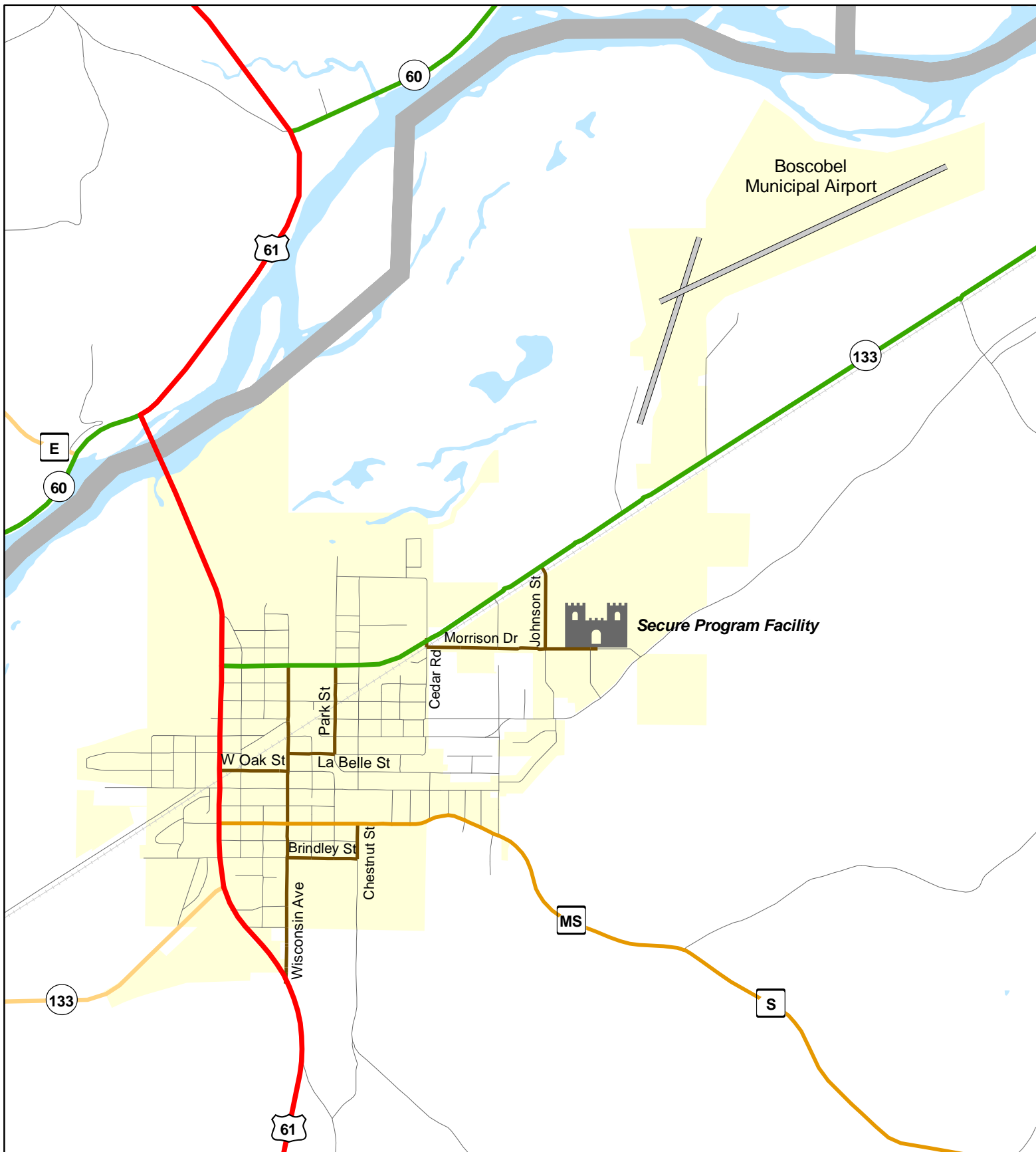
WisDOT Bureau of Planning and Economic Development
FHWA approval: 03/06/2012
PDF created: 02/23/2012

Chart C Community: BAGLEY
County: Grant



Chart C Community: BOSCOBEL County: Grant

Functional Classification 03/06/2012



Functional Classification

- Principal Arterial
- Minor Arterial
- Major Collector
- Minor Collector
- Chart C Minor Collector
- planned Principal Arterial
- planned Minor Arterial
- planned Major Collector
- planned Minor Collector

WisDOT Bureau of Planning and Economic Development
FHWA approval: 03/06/2012
PDF created: 02/23/2012

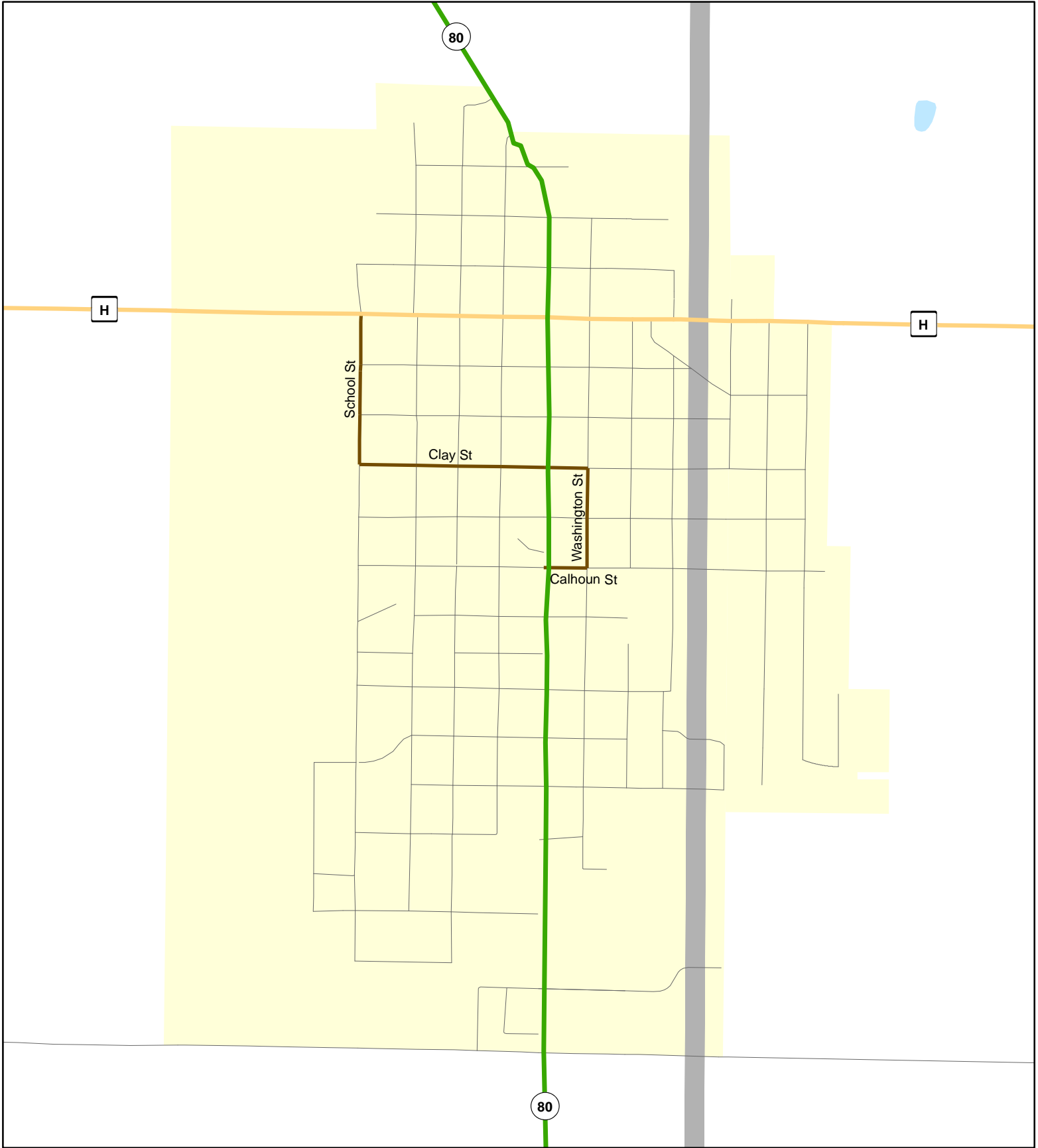
Chart C Community: BOSCOBEL
County: Grant



Chart C Community: CUBA CITY

County: Grant

Functional Classification 03/06/2012



Functional Classification

- | | | | | |
|----------------------------|------------------------|-------------------------|-------------------------|-------------------------|
| Principal Arterial | Minor Arterial | Major Collector | Minor Collector | Chart C Minor Collector |
| planned Principal Arterial | planned Minor Arterial | planned Major Collector | planned Minor Collector | |

WisDOT Bureau of Planning and Economic Development
FHWA approval: 03/06/2012
PDF created: 02/23/2012

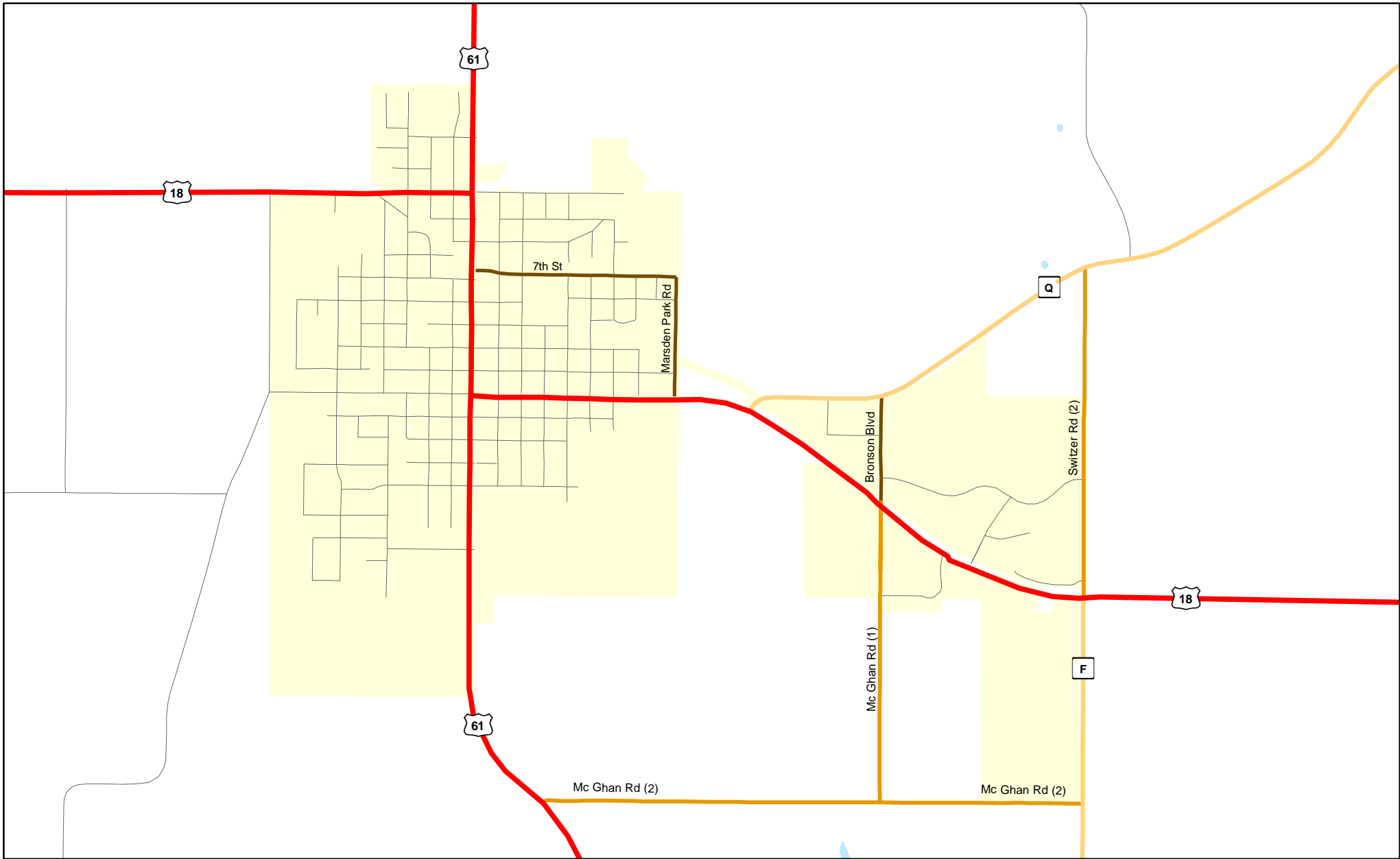
Chart C Community: CUBA CITY

County: Grant



Chart C Community: FENNIMORE
County: Grant

Functional Classification **03/06/2012**



Functional Classification

- Principal Arterial
- Minor Arterial
- Major Collector
- Minor Collector
- Chart C Minor Collector
- - - planned Principal Arterial
- - - planned Minor Arterial
- - - planned Major Collector
- - - planned Minor Collector

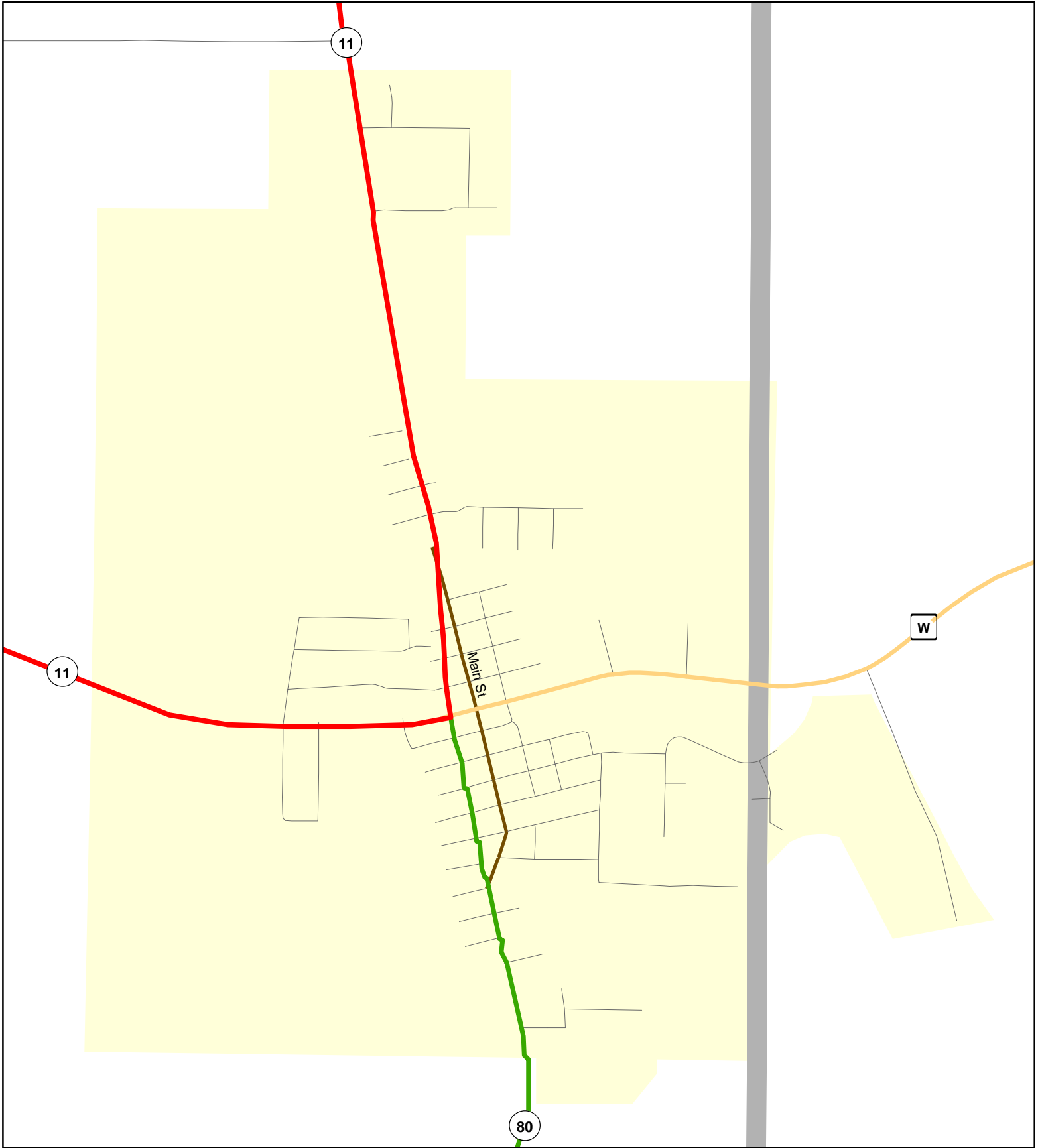
WisDOT Bureau of Planning and Economic Development
FHWA approval: 03/06/2012
PDF created: 02/23/2012

Chart C Community: FENNIMORE
County: Grant



Chart C Community: HAZEL GREEN
County: Grant

Functional Classification **03/06/2012**



Functional Classification

- | | | | | |
|----------------------------|------------------------|-------------------------|-------------------------|-------------------------|
| Principal Arterial | Minor Arterial | Major Collector | Minor Collector | Chart C Minor Collector |
| planned Principal Arterial | planned Minor Arterial | planned Major Collector | planned Minor Collector | |

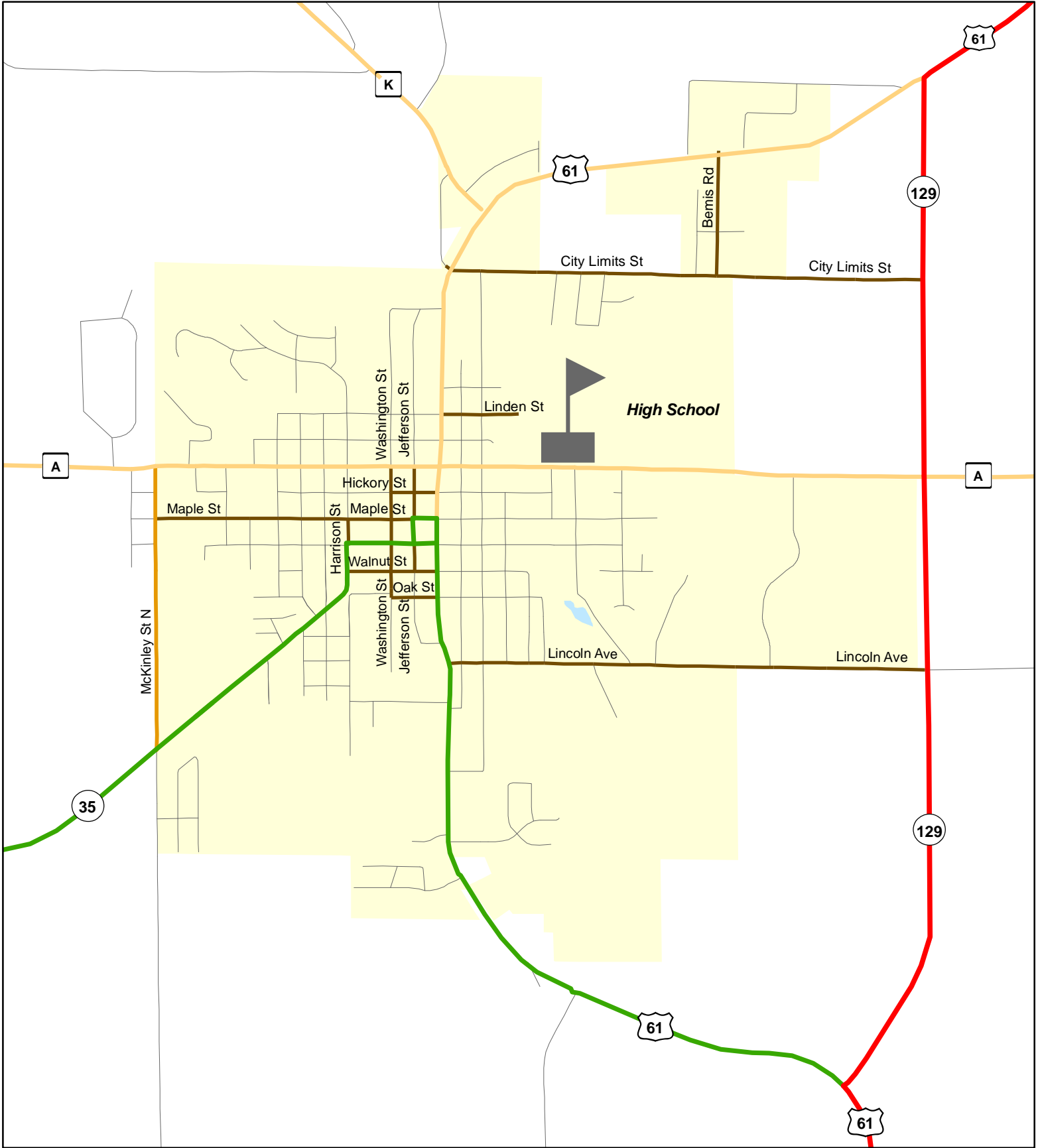
WisDOT Bureau of Planning and Economic Development
FHWA approval: 03/06/2012
PDF created: 02/23/2012

Chart C Community: HAZEL GREEN
County: Grant



Chart C Community: LANCASTER
County: Grant

Functional Classification 03/06/2012



Functional Classification

- | | | | | |
|----------------------------|------------------------|-------------------------|-------------------------|-------------------------|
| Principal Arterial | Minor Arterial | Major Collector | Minor Collector | Chart C Minor Collector |
| planned Principal Arterial | planned Minor Arterial | planned Major Collector | planned Minor Collector | |

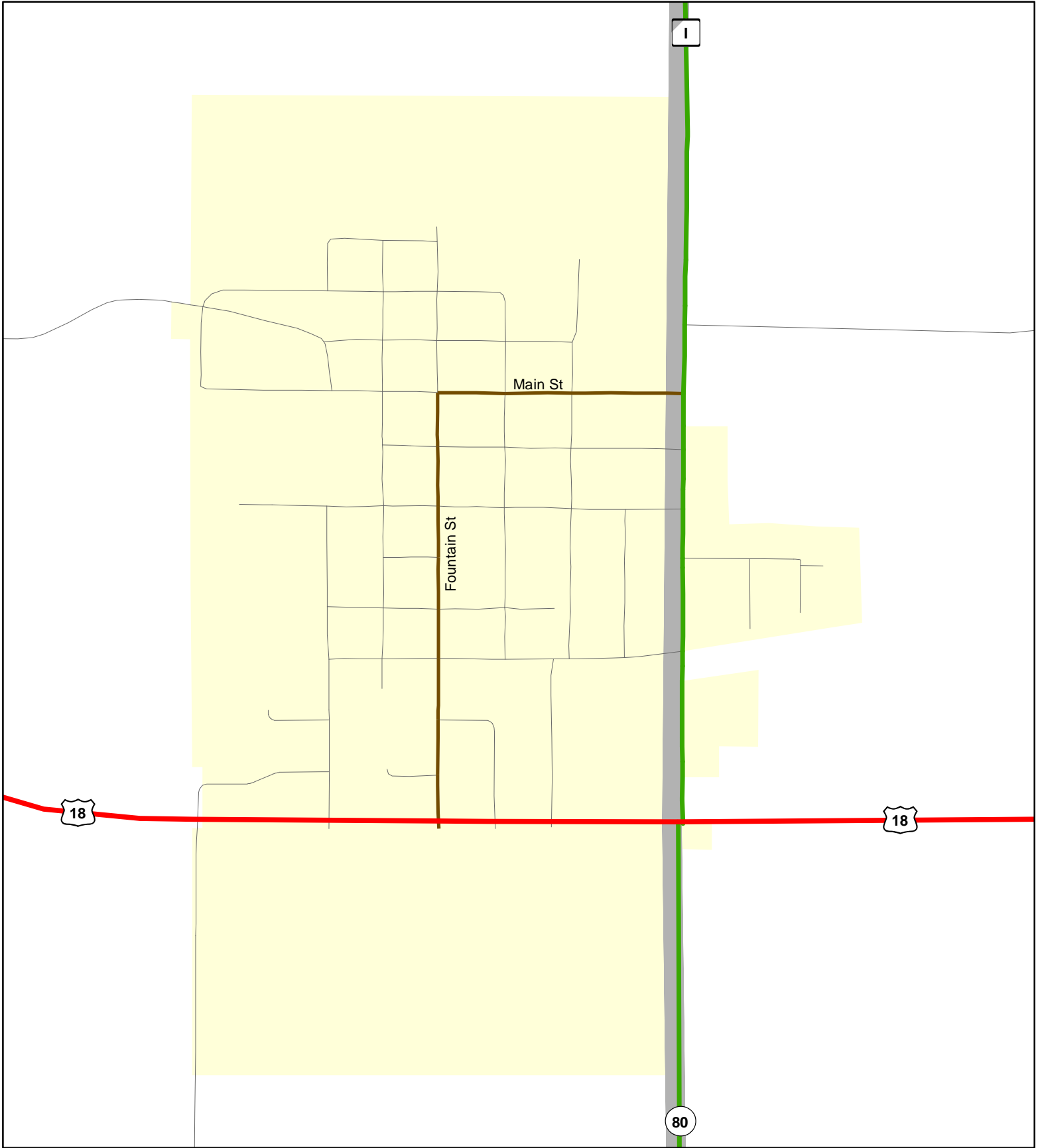
WisDOT Bureau of Planning and Economic Development
FHWA approval: 03/06/2012
PDF created: 02/22/2012

Chart C Community: LANCASTER
County: Grant



Chart C Community: **MONTFORT**
County: **Grant**

Functional Classification 03/06/2012



Functional Classification

- Principal Arterial — Minor Arterial — Major Collector — Minor Collector — Chart C Minor Collector
- - planned Principal Arterial - - planned Minor Arterial - - planned Major Collector - - planned Minor Collector

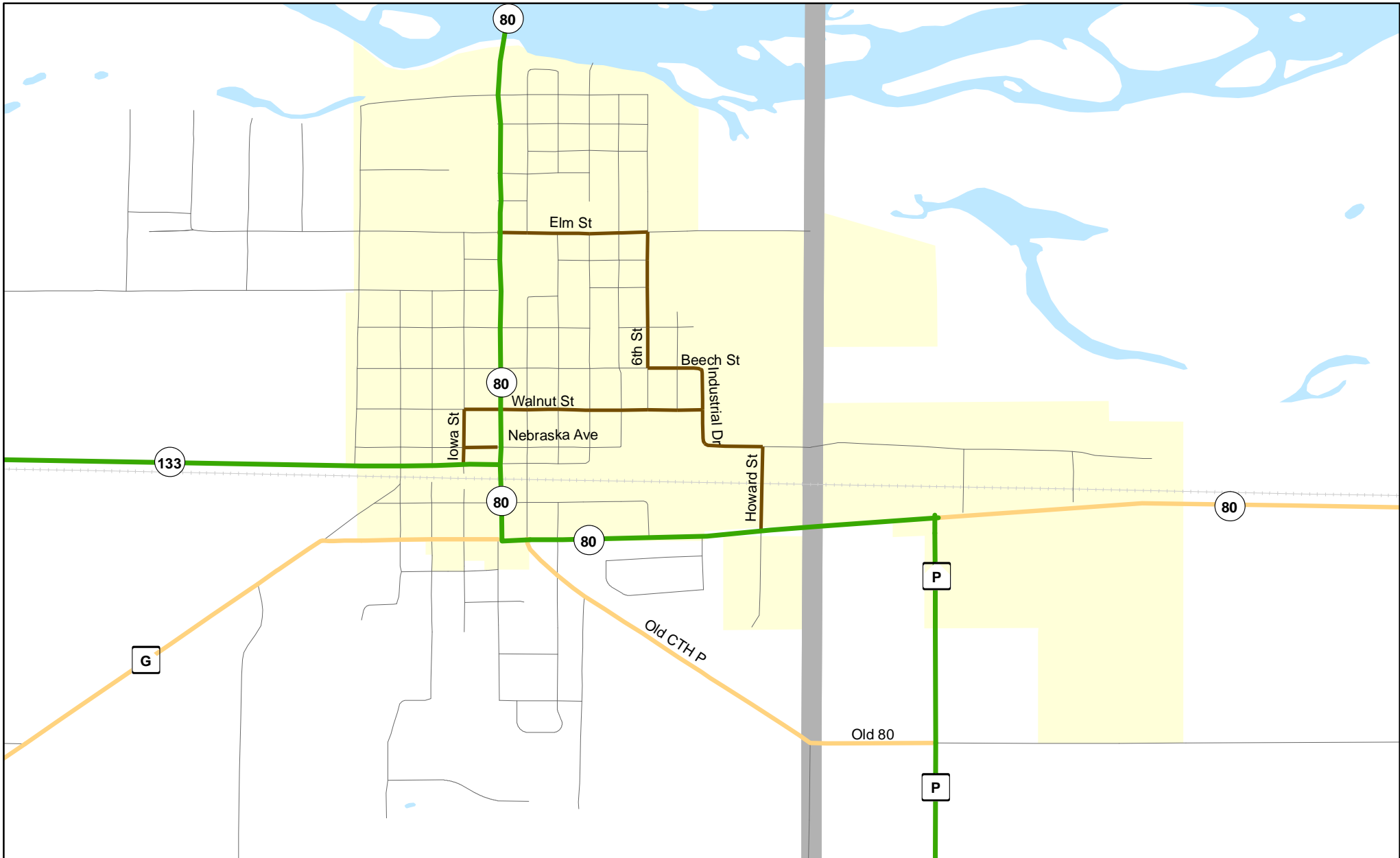
WisDOT Bureau of Planning and Economic Development
FHWA approval: 03/06/2012
PDF created: 02/23/2012

Chart C Community: MONTFORT
County: Grant



Chart C Community: MUSCODA
County: Grant

Functional Classification 03/06/2012



Functional Classification

- Principal Arterial
- Minor Arterial
- Major Collector
- Minor Collector
- Chart C Minor Collector
- - - planned Principal Arterial
- - - planned Minor Arterial
- - - planned Major Collector
- - - planned Minor Collector

WisDOT Bureau of Planning and Economic Development
FHWA approval: 03/06/2012
PDF created: 02/23/2012

Chart C Community: MUSCODA
County: Grant