

# Task 4.6(a): Replace a Computer, Using Files from Old Computer

 (/help/pdfexport/id/5a846f7aad121c345f3f1715)  

Last Modified on 11/09/2018 11:44 am CST

**Purpose:** Configures TraCS on a replacement computer using files from the original computer.

**Requirements:** New replacement computer and files from old computer.

At old computer:

1. Make a backup of the TraCS folder.
  - a. C:\ProgramData\TraCS (Folder)

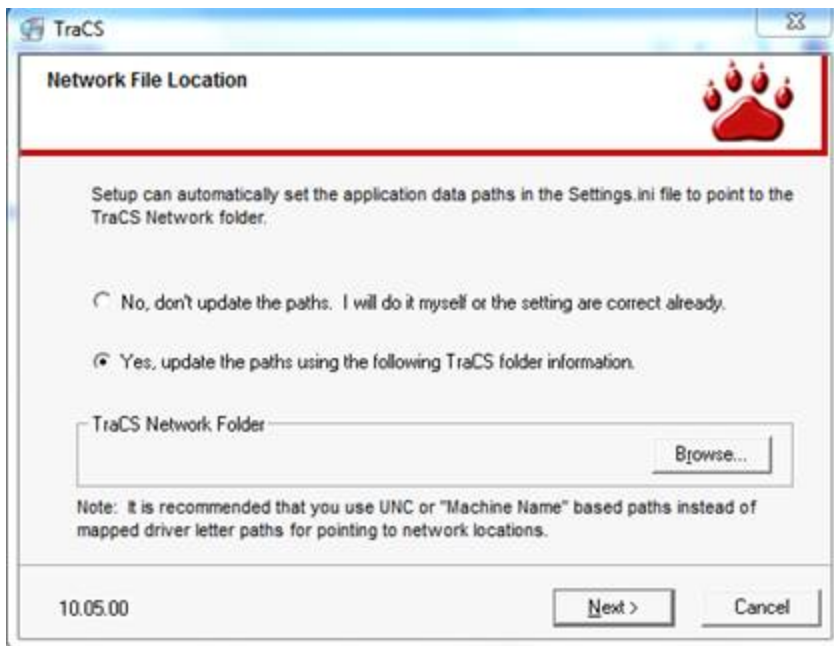
At new replacement computer:

2. Run InstallTraCS.bat, which can be found in the **Distribution** folder.(See task 3.12, step 6b for location.)

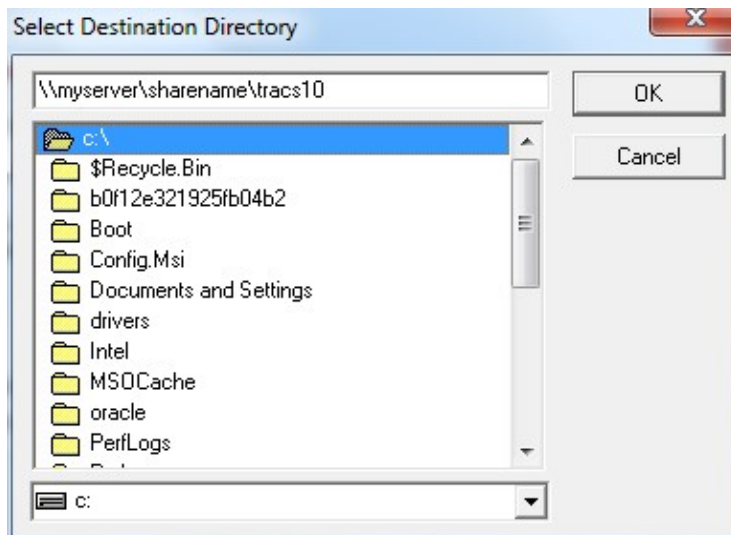
Distribution Folder: \_\_\_\_\_

3. Click **Next**.
4. Click **Next**.
5. Enter the requested registration information.
  - a. Enter your agency name spelled and capitalized as found on your welcome letter.(If you change the spelling of your agency, you will not be able to download software updates from Badger TraCS.

- b. Enter **6** in the entity key field.
  - c. Enter the TraCS serial number found on your welcome letter.
  - d. Click **Next**.
6. Choose the **Client** radio button on the **Install Type** screen.
  7. Click **Next**.
  8. Enter the three-digit, all numeric, TraCS Machine ID number from your installation worksheet. Remember, machine numbers must be unique throughout your agency.
  9. Click **Next**.
  10. Click **Next**.
  11. Click **Next**.
  12. Click **Next**. The installation will start.
  13. On the **Network File Location** dialog, click **Browse**.

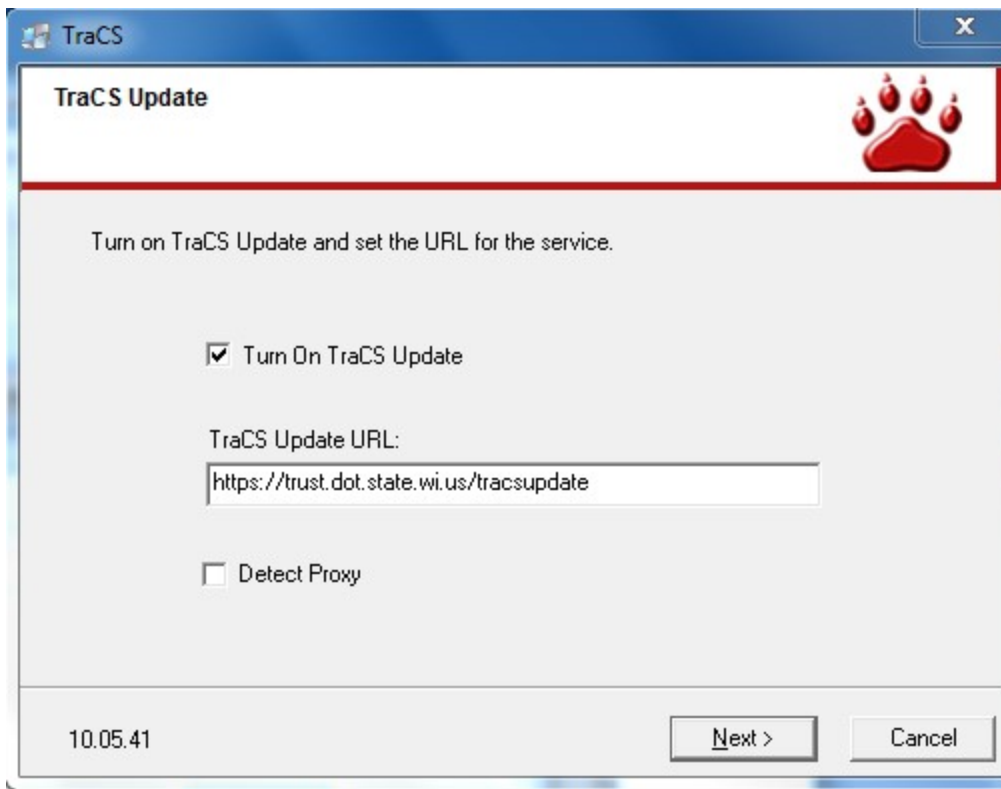


- a. Enter the UNC file path from Task 1.2, step 6b.



TraCS Network Folder: \_\_\_\_\_

14. Enable the update server.



- a. Place a checkmark next to **Turn On TraCS Update**.
  - b. Enter **https://trust.dot.state.wi.us/tracsupdate**  
(https://trust.dot.state.wi.us/tracsupdate) in the **TraCS Update URL** field.
  - c. Click **Next**.
  - d. Click **Finish** on the final screen.
15. Replace the TraCS folder with the backup copy created in step 1.
16. Start TraCS and run through the update process.
17. If this computer replaces your master computer:
- a. Email badgertracs@dot.wi.gov to register your new Master Computer on the update server (Please provide agency, windows computer name, and TraCS machine number.)

- b. Wait for a reply from Badger TraCS and then restart TraCS on your master computer to complete the update process.

Next Article: [Task 4.6\(b\): Replace a Computer, Using Auto-Update Settings \(/help/task-46b-replace-a-computer-using-auto-update-settings\)](/help/task-46b-replace-a-computer-using-auto-update-settings)