



Application of Standard Detail Drawings

November 2021

Definition

Standard detail drawings (SDDs) are completed designs of highway elements common to many highway projects. Their purpose is to simplify the design process and standardize the design of features found on many highway improvement projects.

Content

Each standard detail drawing is a two-part document. The first part consists of individual drawing pages. The following part is a set of designer's notes for the drawing. These notes provide the following information to help designers use the drawing correctly.

Designer's Notes Contents

Table with 2 columns: Item, Description. Rows include References, Bid Items Associated with This Drawing, STSPs Associated with This Drawing, Other SDDs Associated With This Drawing, Design Notes, and Contact Person.

Revised SDDs

SDDs are intended for application statewide. The process for developing or revising a SDD involves research and coordination with numerous offices within and outside of the department.

Unauthorized changes to SDDs may lead to unsound design decisions and violations of agreements with other agencies. Therefore, they should be used without modification.

In certain rare cases, there may be a WisDOT highway improvement project whose special needs conflict with the content of an SDD. In these situations, the designer shall follow the process below to obtain a copy of a SDD for project-specific revisions and use as a plan insert drawing.

The designer shall coordinate and discuss the project with the contact person listed on the back of the SDD. They should explain why the SDD does not work in the given project and how they propose to revise the SDD.

Proposal Review

The contact person will evaluate the designer's proposal. If the proposal is valid, then the contact person will request a copy of the SDD from the Facilities Development Manual (FDM) Editor or the Standard Detail Drawing (SDD) Editor at [FDMSupport@dot.wi.gov](mailto:FDMSupport@dot.wi.gov) and supply the drawing to the designer for revision and incorporation into a plan.

This process is intended for one-time revisions to meet the needs of specific individual projects. SDDs revised to meet the needs of one project should not be used on any other project without again conferring with the SDD contact.

Consultants may use the same procedure to obtain electronic copies of SDDs. Files will be delivered to

consultants in AutoCAD .DWG format. It is the consultant's responsibility to reformat these files for use in another system.

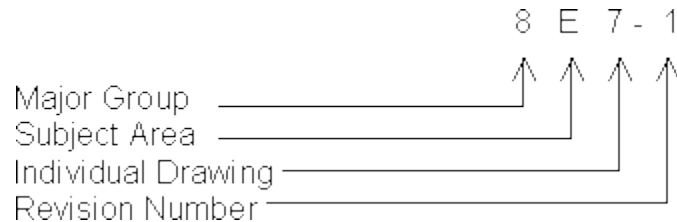
### Copies of SDDs

Local units of government and their consultants may obtain electronic copies of SDDs for projects that are not sponsored or administered by WisDOT. Contact the FDM Editor or SDD Editor at [FDMSupport@dot.wi.gov](mailto:FDMSupport@dot.wi.gov) to request electronic copies of SDDs.

## Numbering System for Standard Detail Drawings

November 2021

Each Standard Detail Drawing (SDD) is assigned a number consisting of four elements as shown below:



Standard Detail Drawings are divided into Major Groups for: Drainage, Intersection Design, Freeway Lighting, Geometric Design, Structures, Pavements, Incidental Design, Traffic Control and Surveying. Each major Group is further subdivided into subject areas. Drainage (Group 8), for example, has subject areas entitled "Manholes," "Inlets," "Erosion Control Devices, etc. Each of these subject areas is assigned a letter, with the first subject area assigned the letter A. "Erosion Control Devices" is the fifth subject area under Drainage and is assigned the letter E. Individual SDDs are collected within the subject areas and are numbered consecutively beginning with the number 1. Thus, the SDD entitled "Erosion Mat," which is the seventh drawing collected under the subject area "Erosion Control Devices" within the major grouping of Drainage, is numbered 8E7. A dash (-) followed by the number 1 is added to identify the original issue of an SDD (8E7-1). Revisions are numbered -2, -3, etc. When an SDD is over one page in length, a small "a," "b," "c," etc., is added after the revision number to indicate page numbers (e.g., 8E7-1a, 8E7-1b).

Note that Standard Detail drawings are occasionally discontinued from use and retired because of changes in technology, materials, and design philosophy. Gaps in the numerical sequence of the SDD listing is likely due to drawings being retired.