

DODGE CO. WASHINGTON CO. WASHINGTON CO.

R-17-E R-18-E R-19-E R-20-E  
Town of Ashippun Town of Erin Town of Richfield

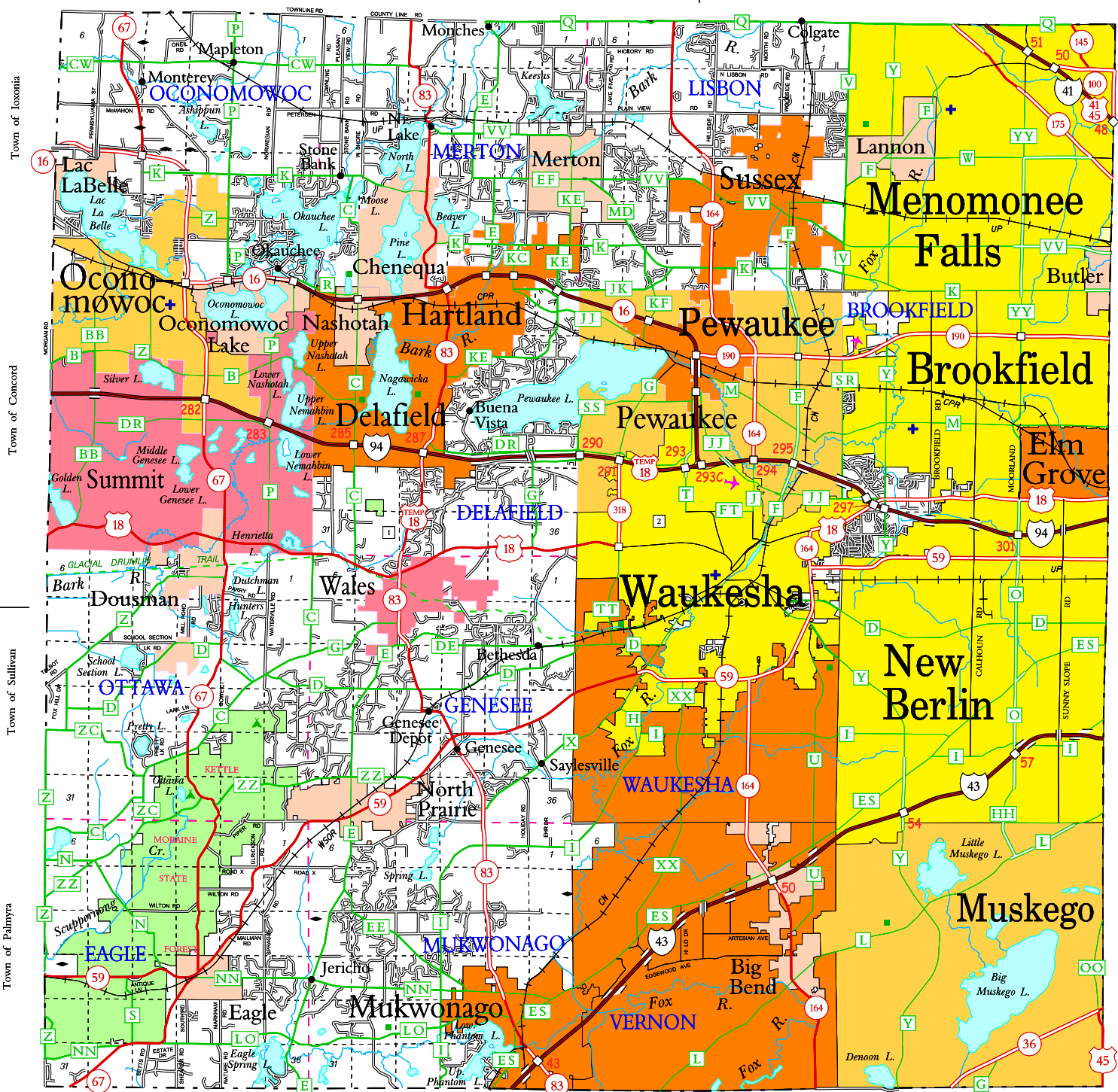
JEFFERSON CO.

T-8-N

T-7-N

T-6-N

T-5-N



MILWAUKEE CO.

T-8-N

T-7-N

T-6-N

T-5-N

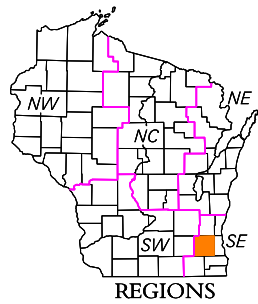
MILWAUKEE CO.

Town of Troy Town of East Troy Town of Waterford Town of Norway  
R-17-E R-18-E R-19-E R-20-E

WALWORTH CO. RACINE CO.

LEGEND

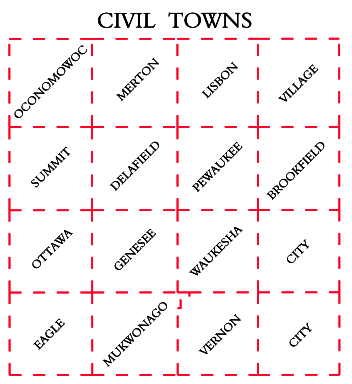
- Freeway
- Multilane Divided
- U.S. or State Hwy
- County Trunk Hwy
- Town Road
- Firelane
- Railroad
- State Trail
- Interchange
- Highway Separation
- Interstate Highway No.
- U.S. Highway No.
- State Highway No.
- County Highway Letter
- State Boundary
- County Boundary
- Civil Town Boundary
- Section Line
- Dam
- Hospital
- Airport
- County Seat
- Unincorporated Village
- Fish Hatchery
- Game Farm
- Public Hunt. or Fish. Grds.
- Public Camp & Picnic Grds.
- Ranger Station
- State Park
- County Park - With Facilities
- Without Facilities
- Rest Area - Modern Facilities
- Wayside - Rustic Facilities
- Ethan Allen School
- Univ. of Wisconsin - Waukesha



REGIONS

SECTION NUMBERING OF A TOWNSHIP

6	5	4	3	2	1
7	8	9	10	11	12
18	17	16	15	14	13
19	20	21	22	23	24
30	29	28	27	26	25
31	32	33	34	35	36



For boundaries of public hunting and fishing grounds please contact the Department of Natural Resources  
\* Public hunting and fishing grounds not shown within Kettle Moraine State Forest

MILES OF HIGHWAY as of Dec. 31, 2019

STATE	217
COUNTY	406
LOCAL ROADS	2487
OTHER ROADS	0
TOTAL FOR COUNTY	3110

Land Area (2010 Census) ..... 550 sq mi  
Population (2010 Census) ..... 389,891  
County Seat ..... Waukesha

WAUKESHA CO.

DEPARTMENT OF TRANSPORTATION  
Madison, Wisconsin



Corrected for  
JAN. 2021

Base compiled from U.S.G.S. Quadrangles  
1:100,000 Series