



HAP Makes A Difference!

Feature Project: DeLong Co., Inc – Port Milwaukee

Mike Halsted

Harbors & Waterways Program Manager

2023 Wisconsin Freight Railroad Conference
Madison, WI

November 7, 2023

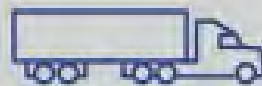
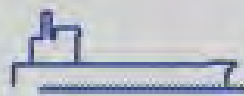
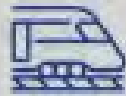
Wisconsin Great Lakes & Mississippi River Maritime Opportunity = Access to Markets



WisDOT's Harbor Assistance Program

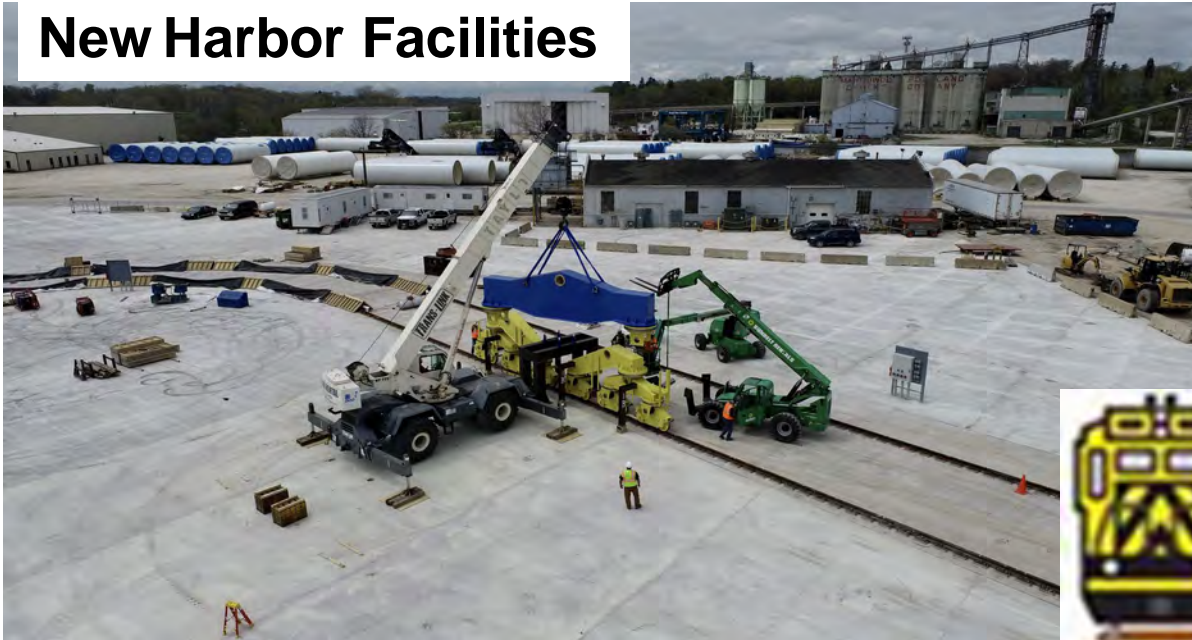
- HAP created in 1979
- 146 Grants Awarded Since 1980
- Nearly \$211 Million in Funding
- \$20 Million in 2023-2025 Budget

Provide necessary water access and to maintain or improve the economically effective commodity movement capabilities of Wisconsin's harbors on the Great Lakes or the Mississippi River system. (Trans 28.03)



Harbor Assistance Program Funds:

New Harbor Facilities



Ferry Infrastructure



Dredging

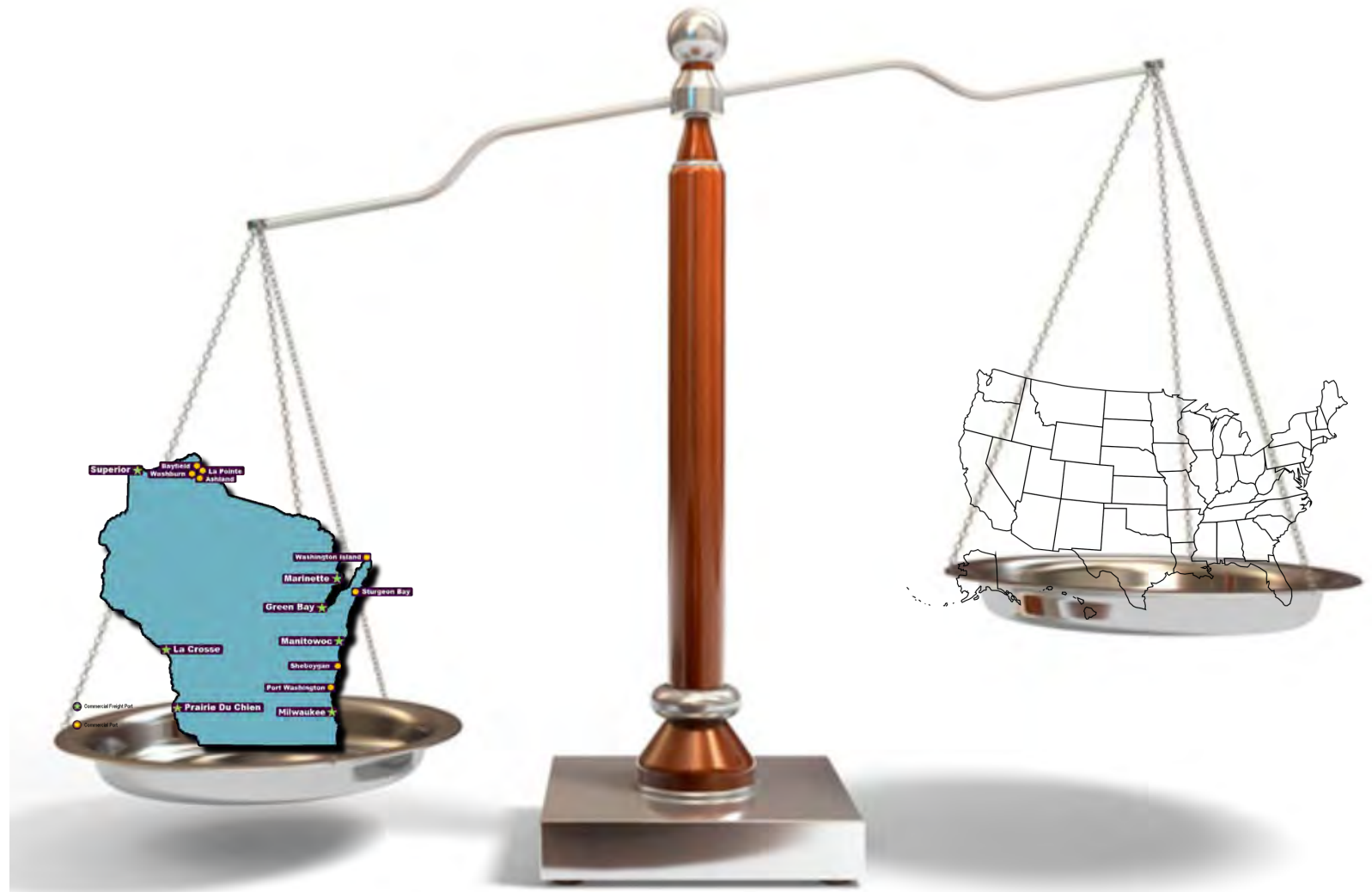


Dockwall

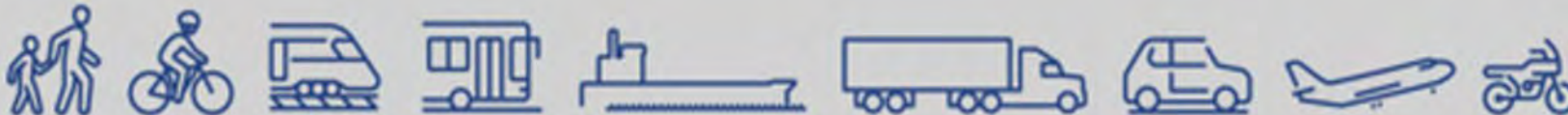


HAP Makes A Difference!

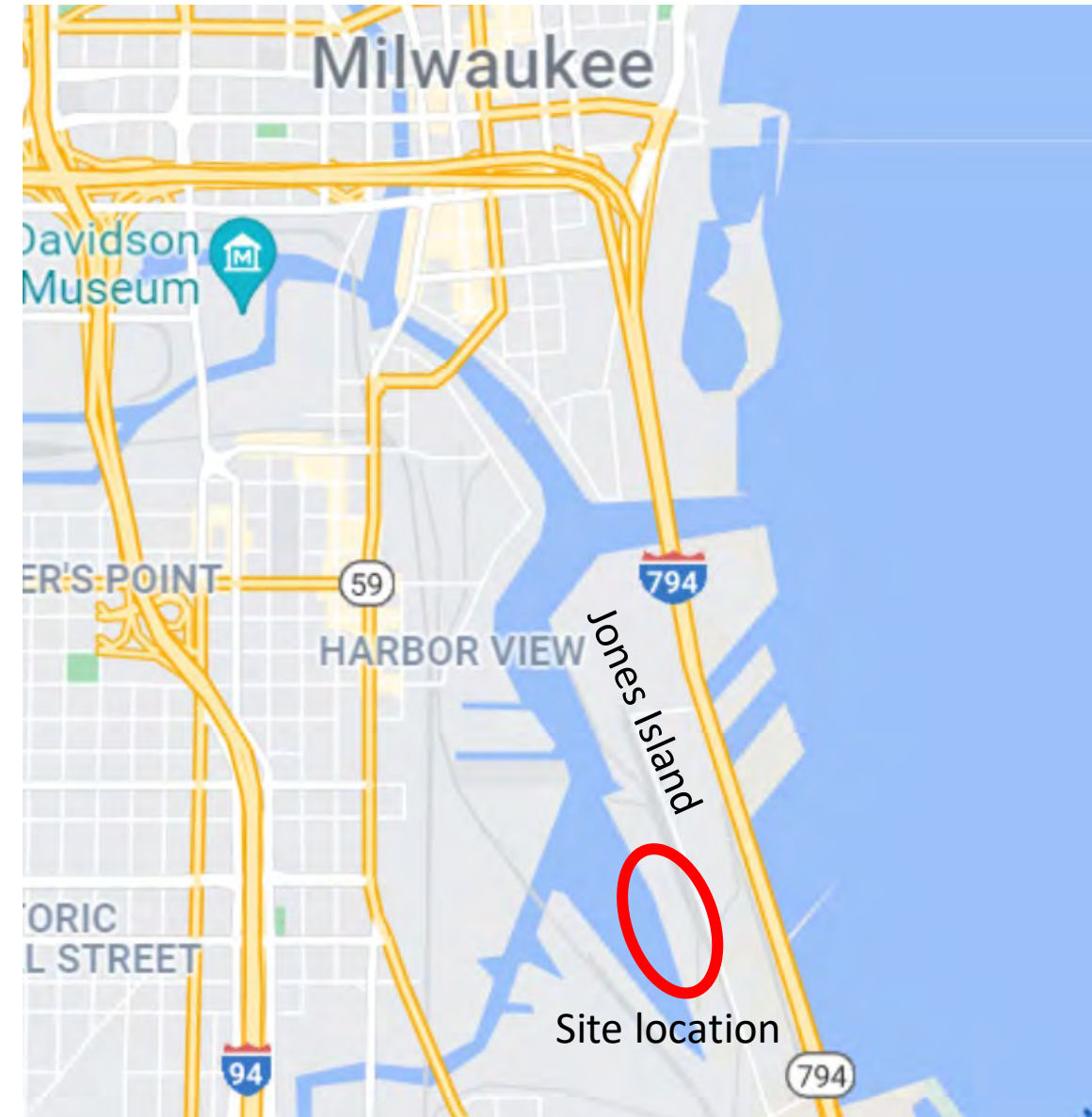
HAP incentivizes corporate decisions and makes Wisconsin an attractive place for maritime commerce.



HAP can provide the competitive advantage needed to tip the scales toward Wisconsin Ports



DeLong Co. Inc. Leases from, Port Milwaukee (tenant port)



**2019: Un-Used Port Milwaukee Property
on Jones Island. Leased to DeLong Co., Inc.**



DeLong Co., Inc. – Port Milwaukee

Midwest Origin & International Market Destinations

Project Highlights

- Transload facility
- Rail & truck freight
- New ag-commodity exports
- Increases port tonnage
- Creates a new harbor facility
- Provides farmers with more market options & better prices
- Boosts Wisconsin Economy



Commodities:

- Grains
 - Soybeans (GMO/NON-GMO)
 - Corn
 - Wheat
- Feedstuffs
 - DDGS (Dried Distillers Grains)
 - CGFP (Corn Gluten Feed Pellets)
 - CGM (Corn Gluten Meal)
 - SBM (Soybean Meal)



DeLong's Agriculture Maritime Export Facility in Port Milwaukee

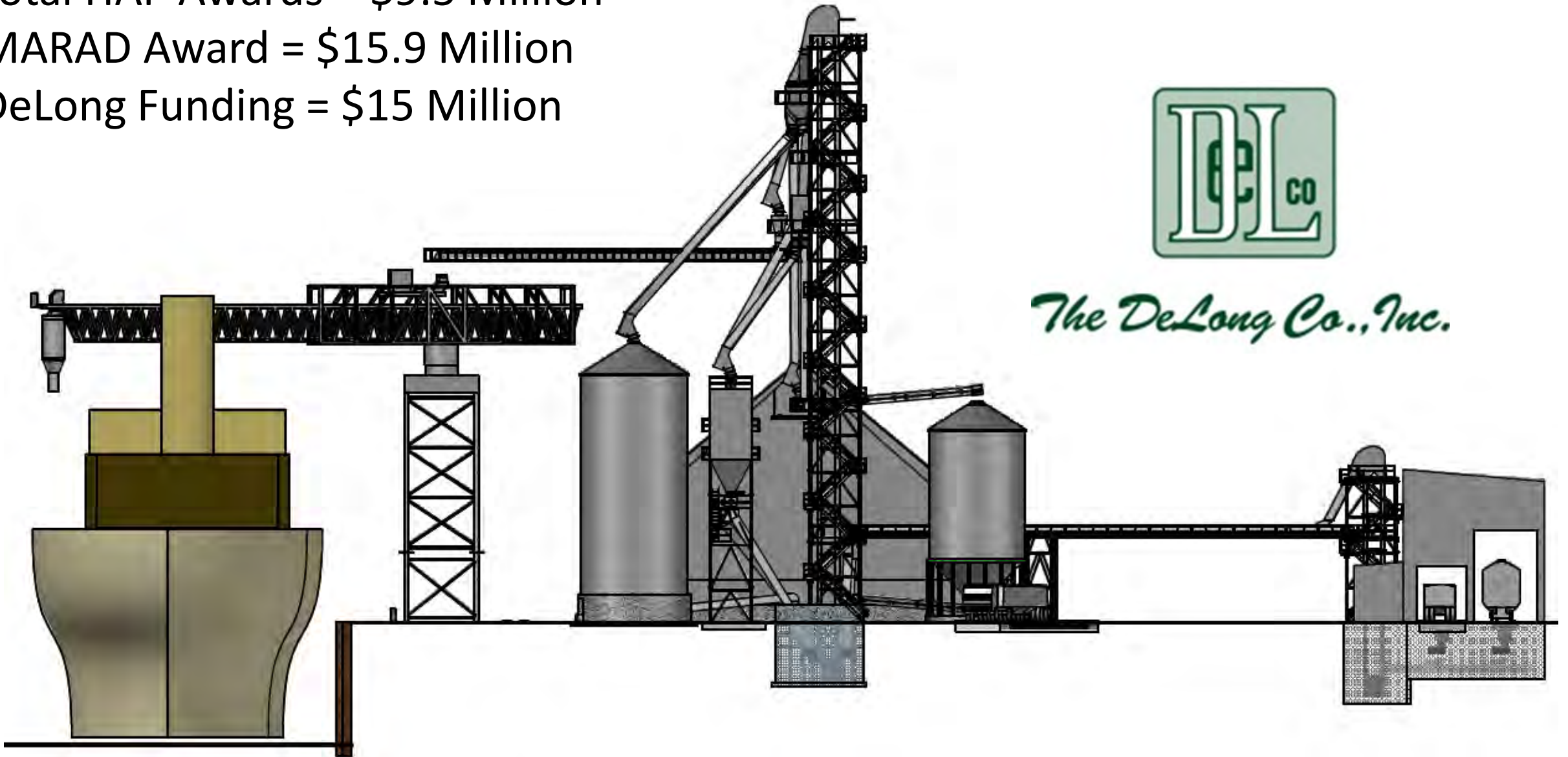
Total HAP Awards = \$9.5 Million

MARAD Award = \$15.9 Million

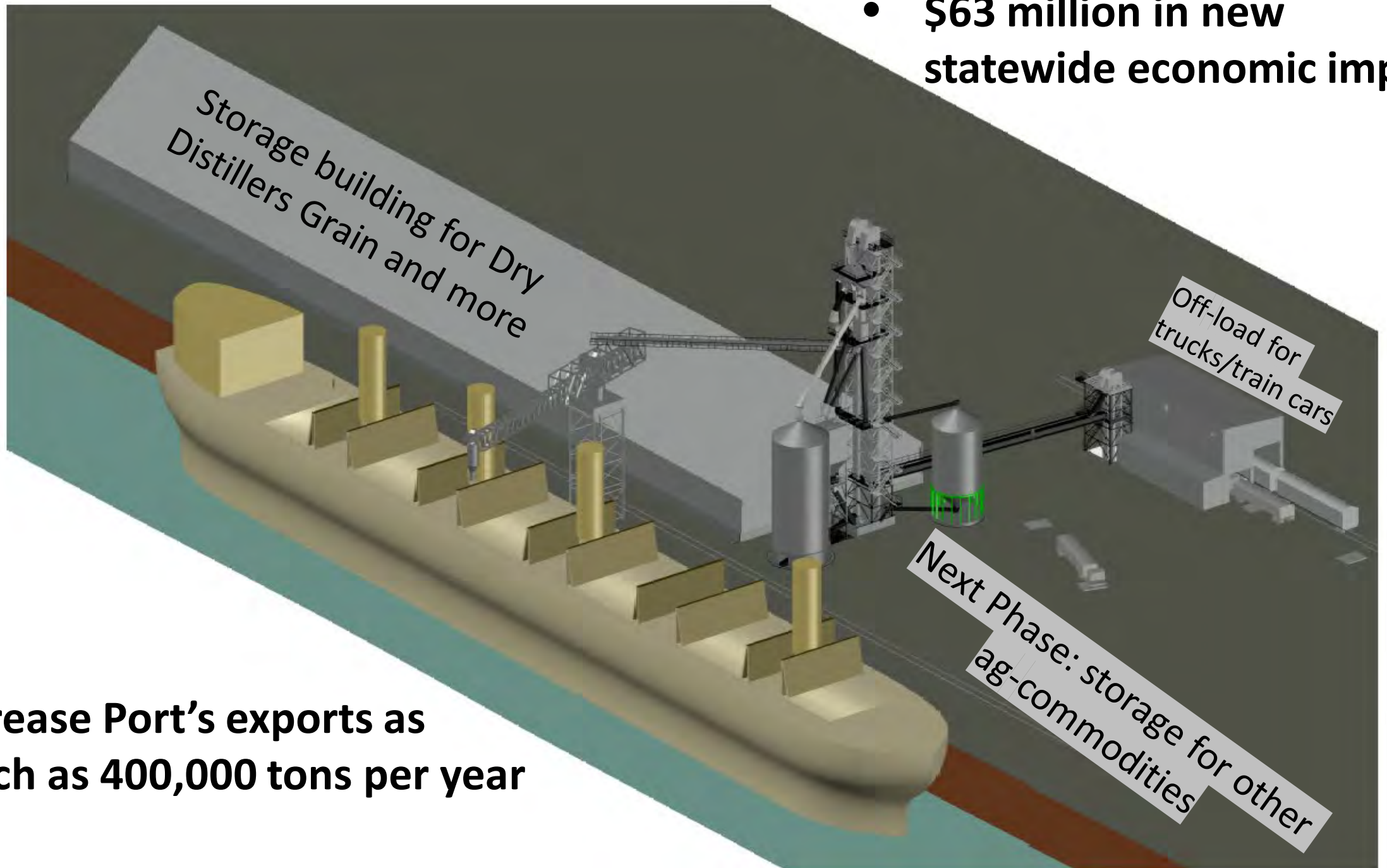
DeLong Funding = \$15 Million



The DeLong Co., Inc.



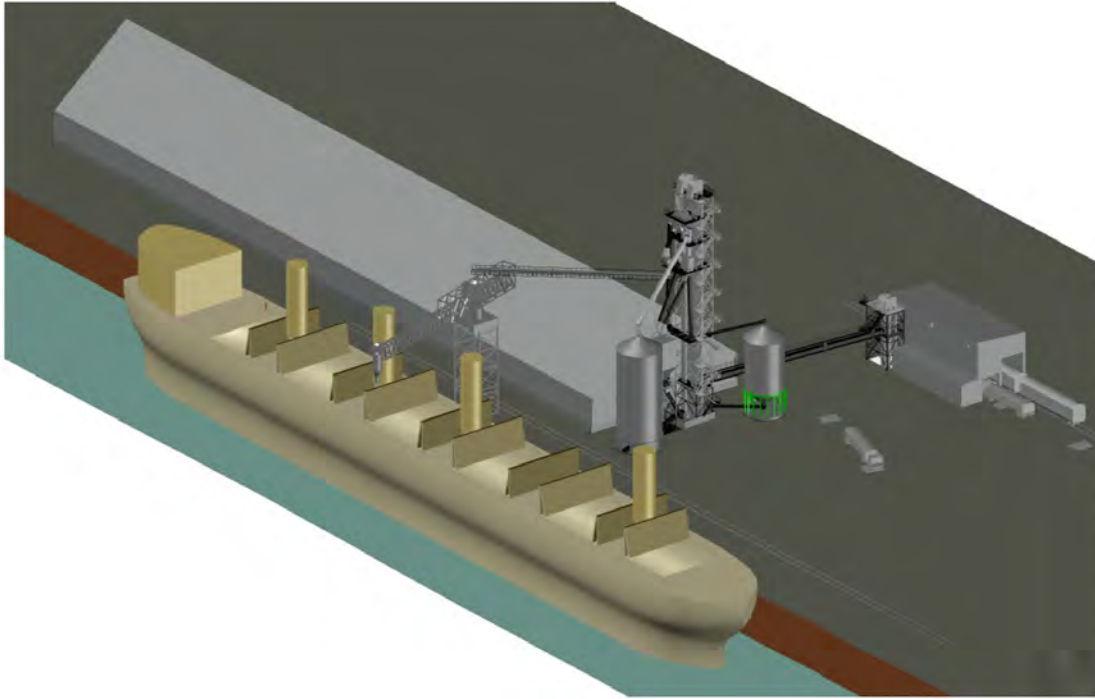
- **\$63 million in new statewide economic impact**



- **Increase Port's exports as much as 400,000 tons per year**



2019 Rendering vs. 2023 Facility



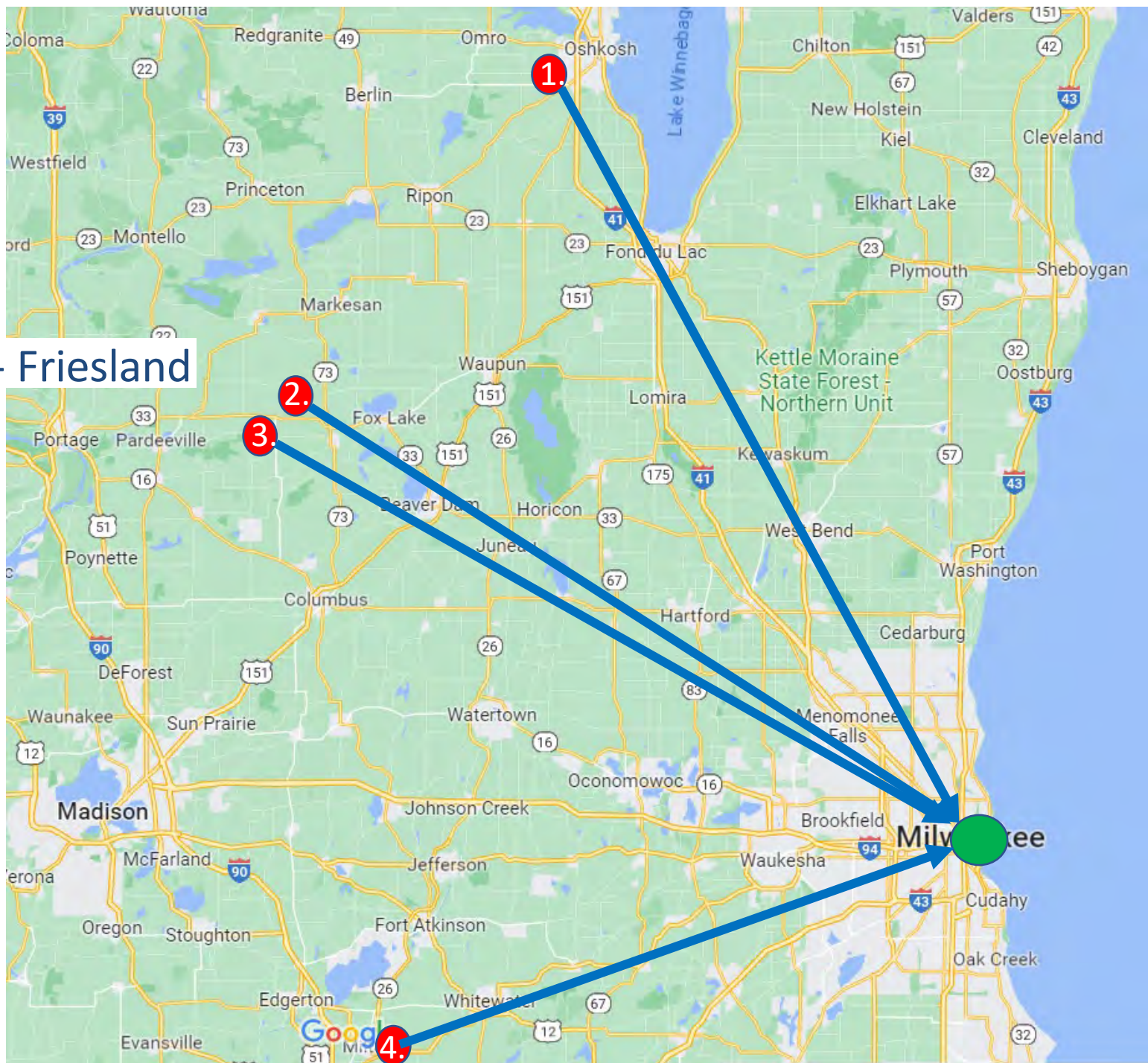
Design



Constructed

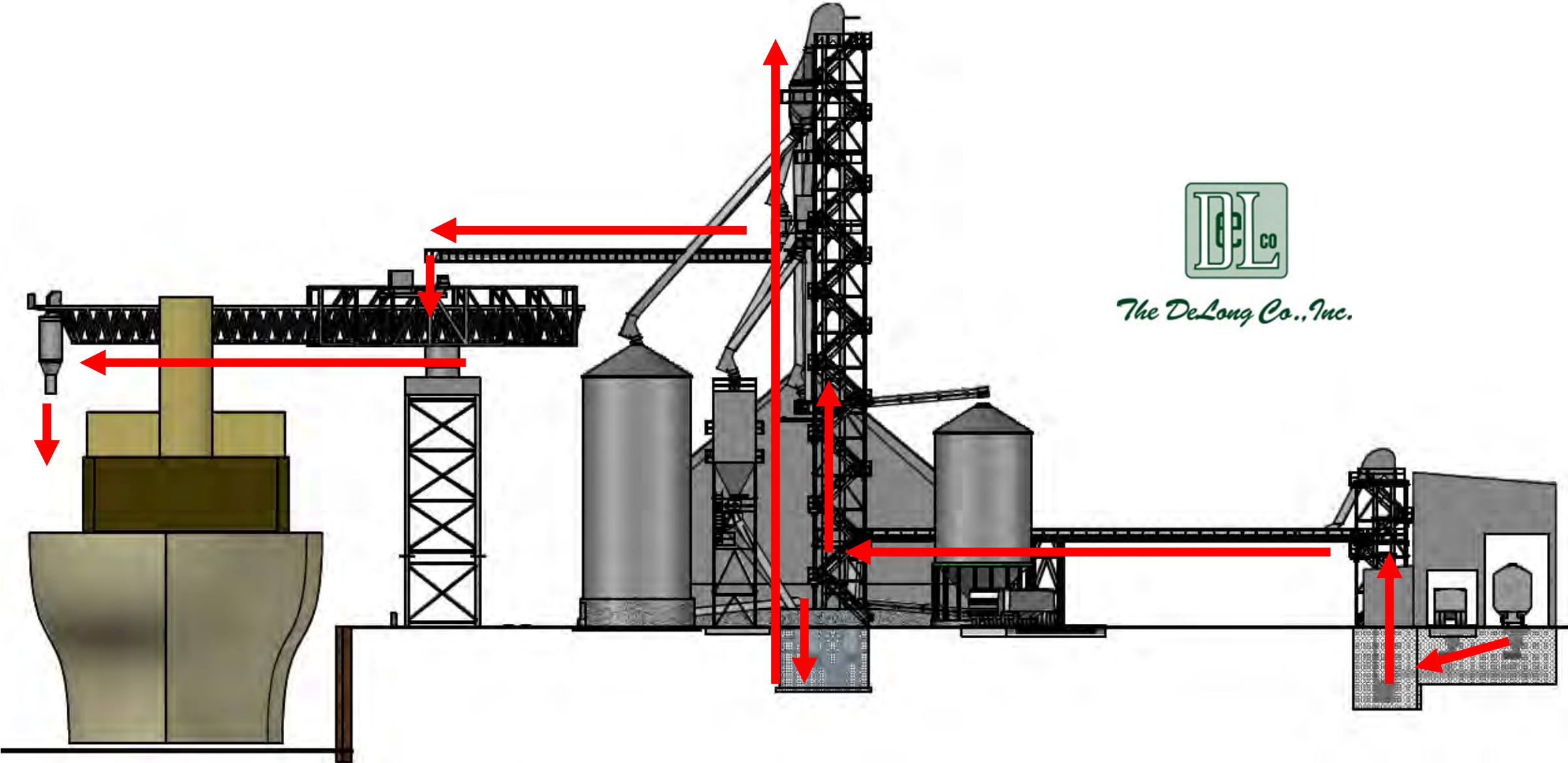
Sources for Dry Distiller Grains (DDGs) Transported by Truck

1. Fox River Valley Ethanol- Oshkosh
2. United Wisconsin Grain Producers- Friesland
3. Didion Ethanol – Cambria
4. United Ethanol - Milton





DeLong's Agriculture Maritime Export Facility in Port Milwaukee



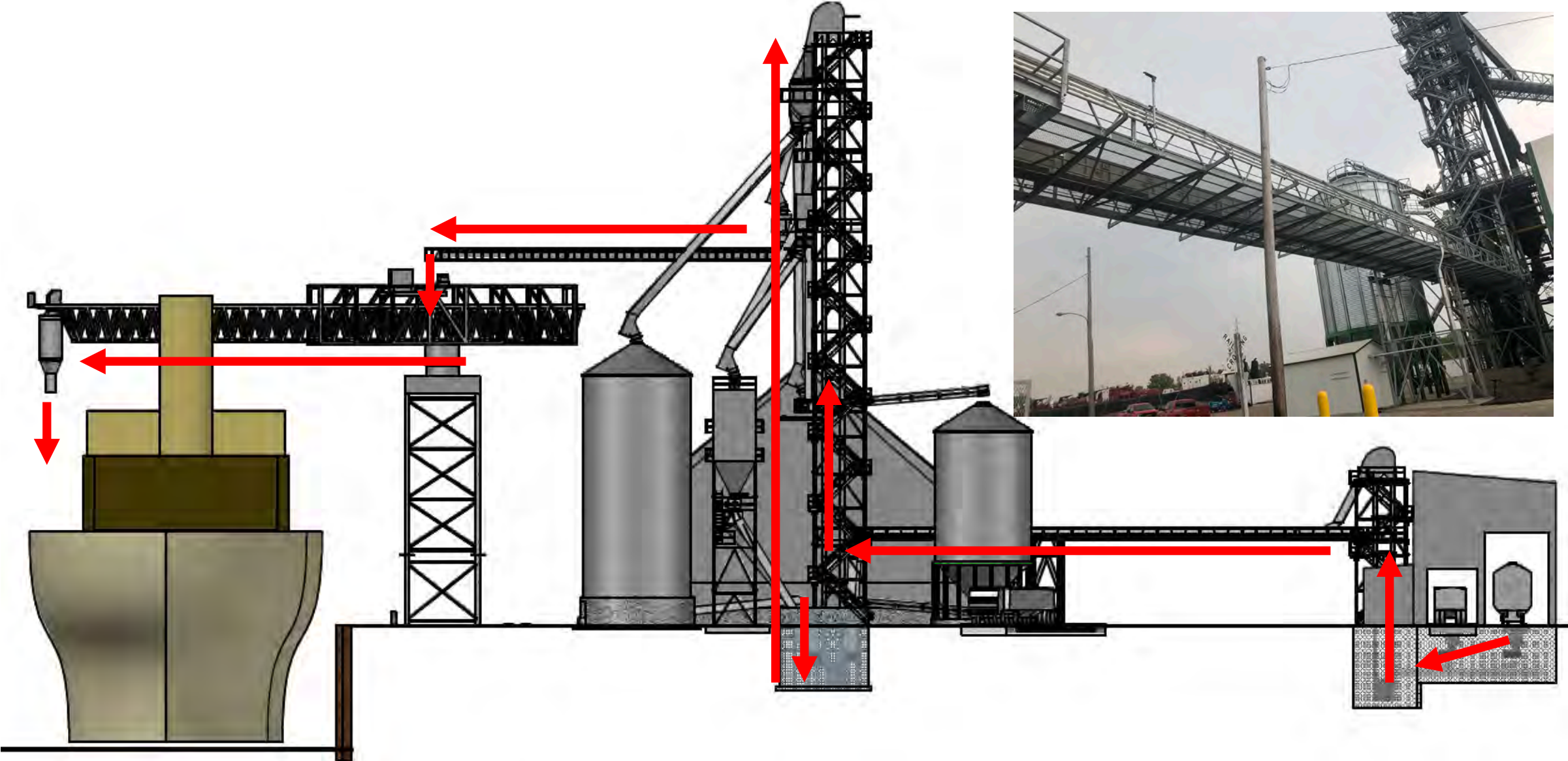








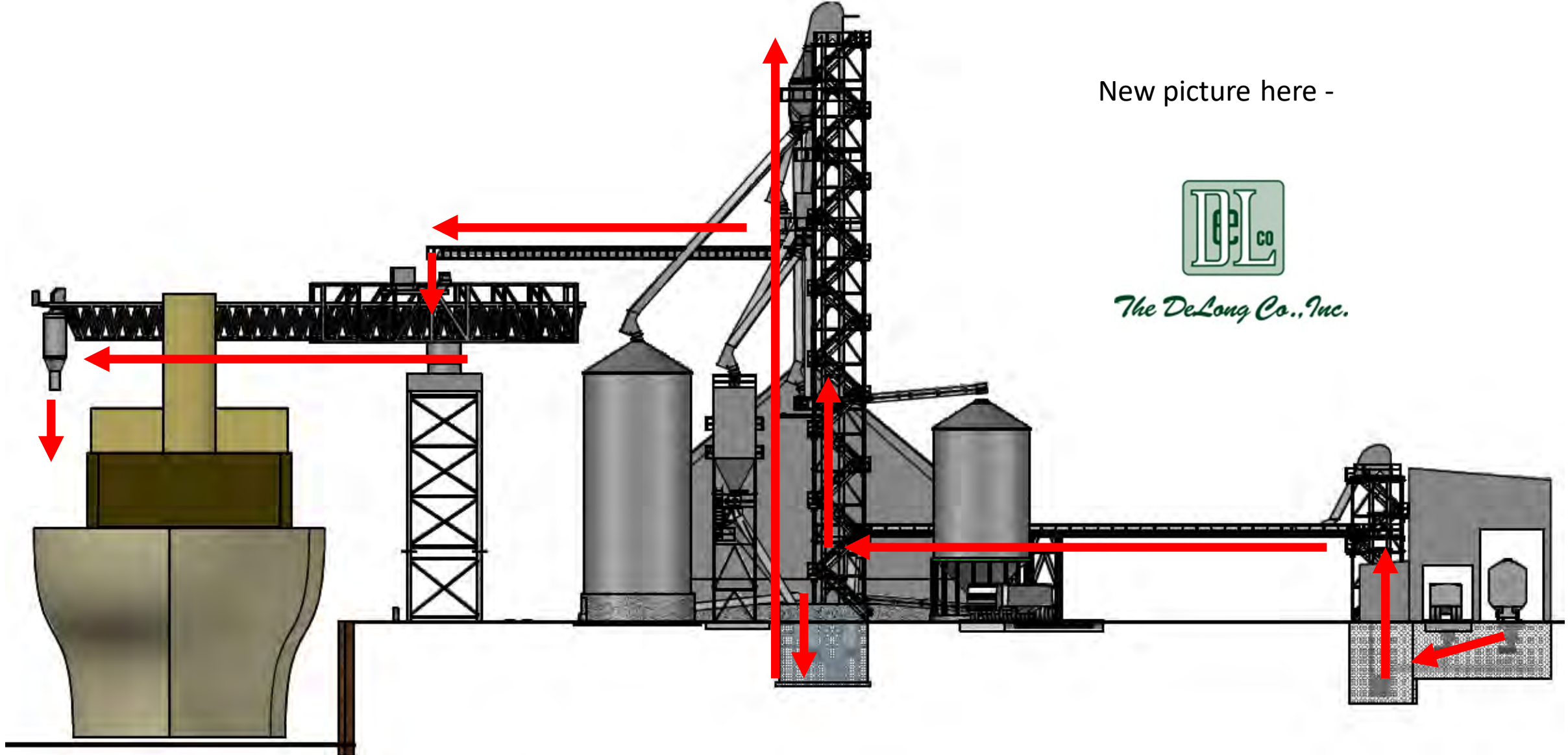
DeLong's Agriculture Maritime Export Facility in Port Milwaukee







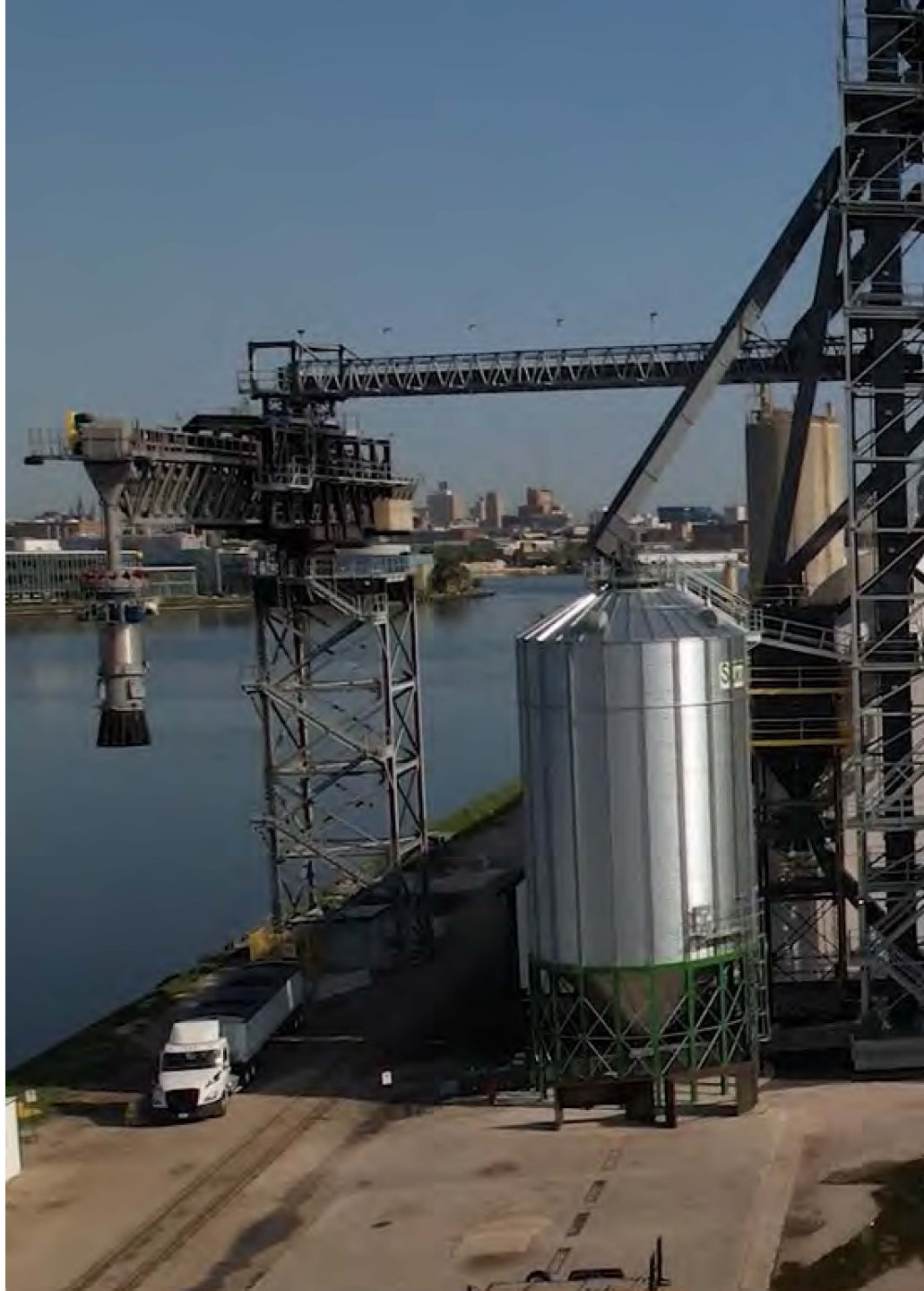
DeLong's Agriculture Maritime Export Facility in Port Milwaukee



New picture here -

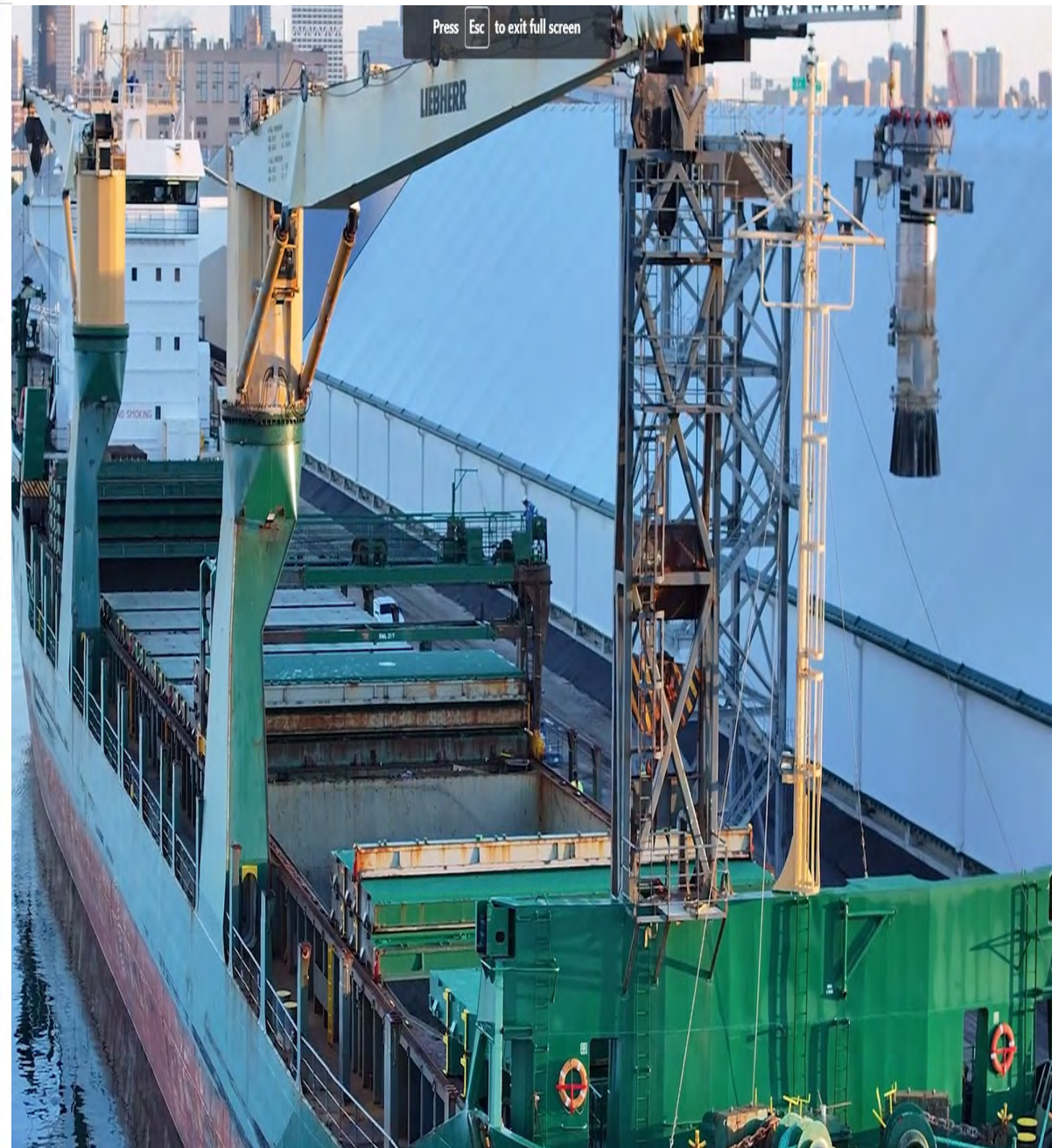


The DeLong Co., Inc.





Loading First Vessel



Loading Soymeal – 2nd Vessel

DDGs and Soybean Meal are being shipped to Belfast, UK



HAP Makes A Difference!

- Public Private partnerships continue to be a proven method to fuel the economy
- Waterborne commerce is often an economic engine for the region
- Employing thousands of direct jobs and supporting secondary jobs across the region
- HAP continues to be a program with an excellent and proven return on investment for Wisconsin.



Summary Video

[102523 DELONG Brand Reel 5 on Vimeo](#)

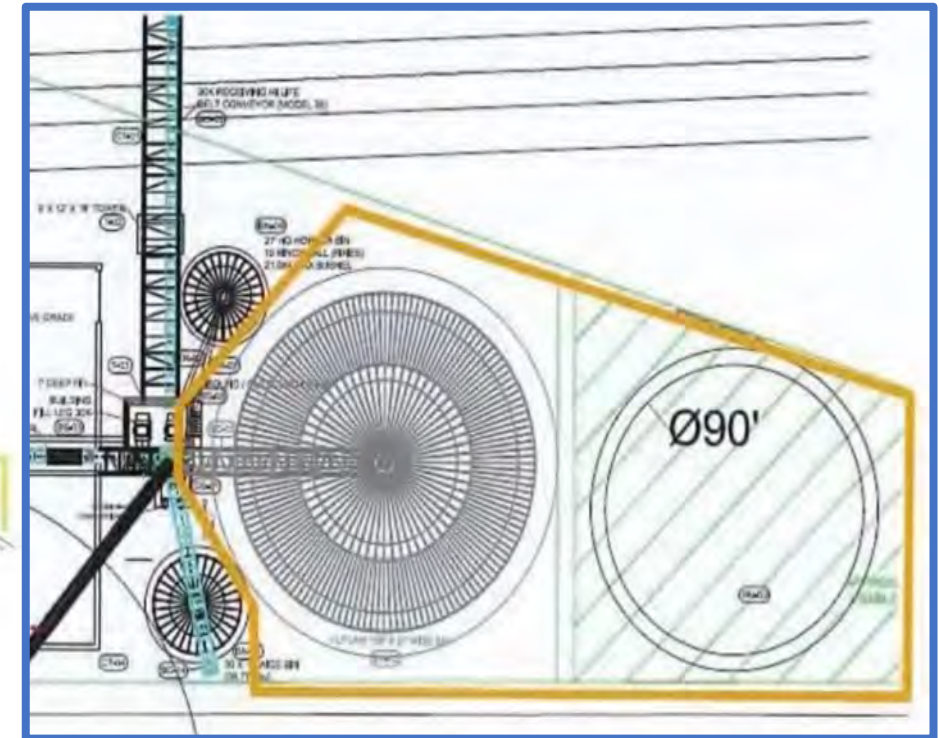
<https://vimeo.com/spotmpg/review/877986034/03f8477f6a>



What's Next?

Phase 2 – Expand Transload Capacity and Commodity Types

November 2023 – MARAD PIDP Awards
Port Milwaukee \$9.3 Million for Phase 2



Questions?



Lisa A. Stern, P.E.

Chief of Railroads and Harbors
Wisconsin Department of Transportation
4822 Madison Yards Way, 6th Floor South
PO Box 7913
Madison, WI 53705-7913
(608) 266-1010 (office)
(608) 294-8057 (cell)



Mike Halsted

Harbors & Waterways Program Manager
Wisconsin Department of Transportation
Desk: (608) 264-8426
michaels.halsted@dot.wi.gov

