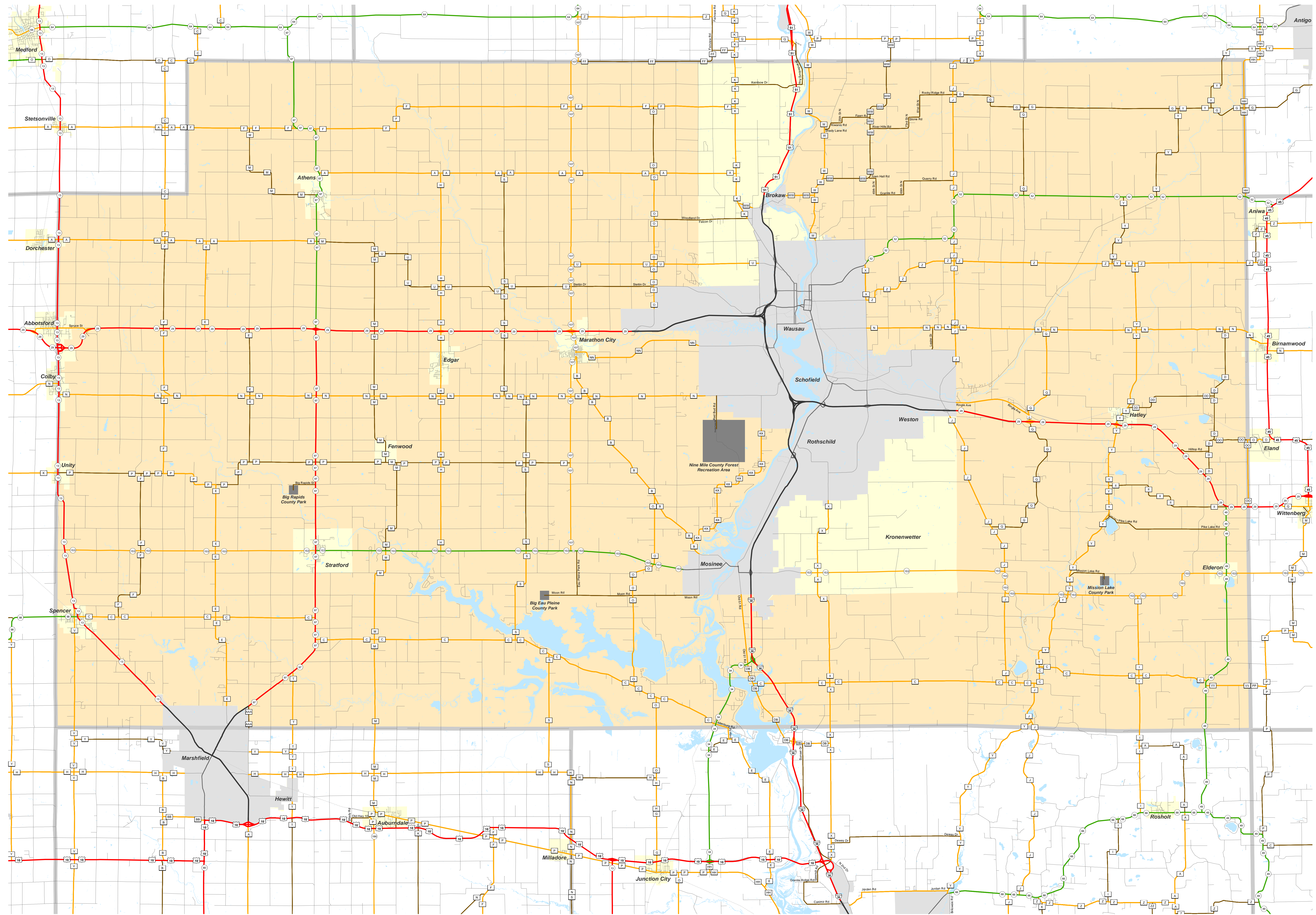


MARATHON

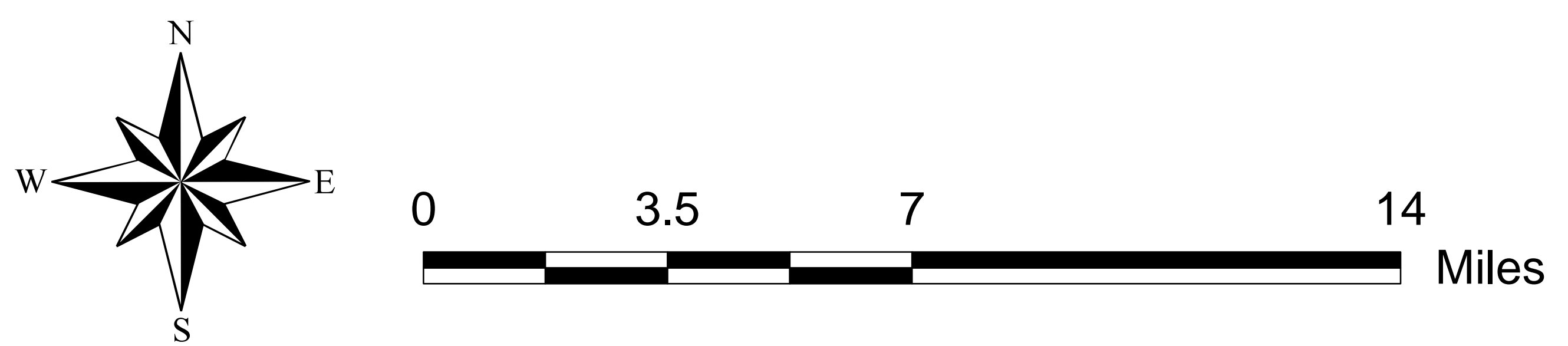
Functional Classification 04/28/2017



Legend

Existing	Planned*	Other
Principal Arterial	Principal Arterial	Railroads
Minor Arterial	Minor Arterial	Lakes, Rivers, Streams
Major Collector	Major Collector	City/Village Boundary
Minor Collector	Minor Collector	Urban(ized) Area
Minor Collector classified using small community criteria and Local		

* NOTE: In urban(ized) areas, only urban connecting links of rural classified routes and urban non-connecting link principal arterials are shown.
All planned route locations are approximations only.



The information on these maps and produced from these maps was created for the official use of the Wisconsin Department of Transportation (WisDOT). Any other use, while not prohibited, is the sole responsibility of the user. WisDOT expressly disclaims all liability regarding fitness of use of the information for other than official WisDOT business.

MARATHON

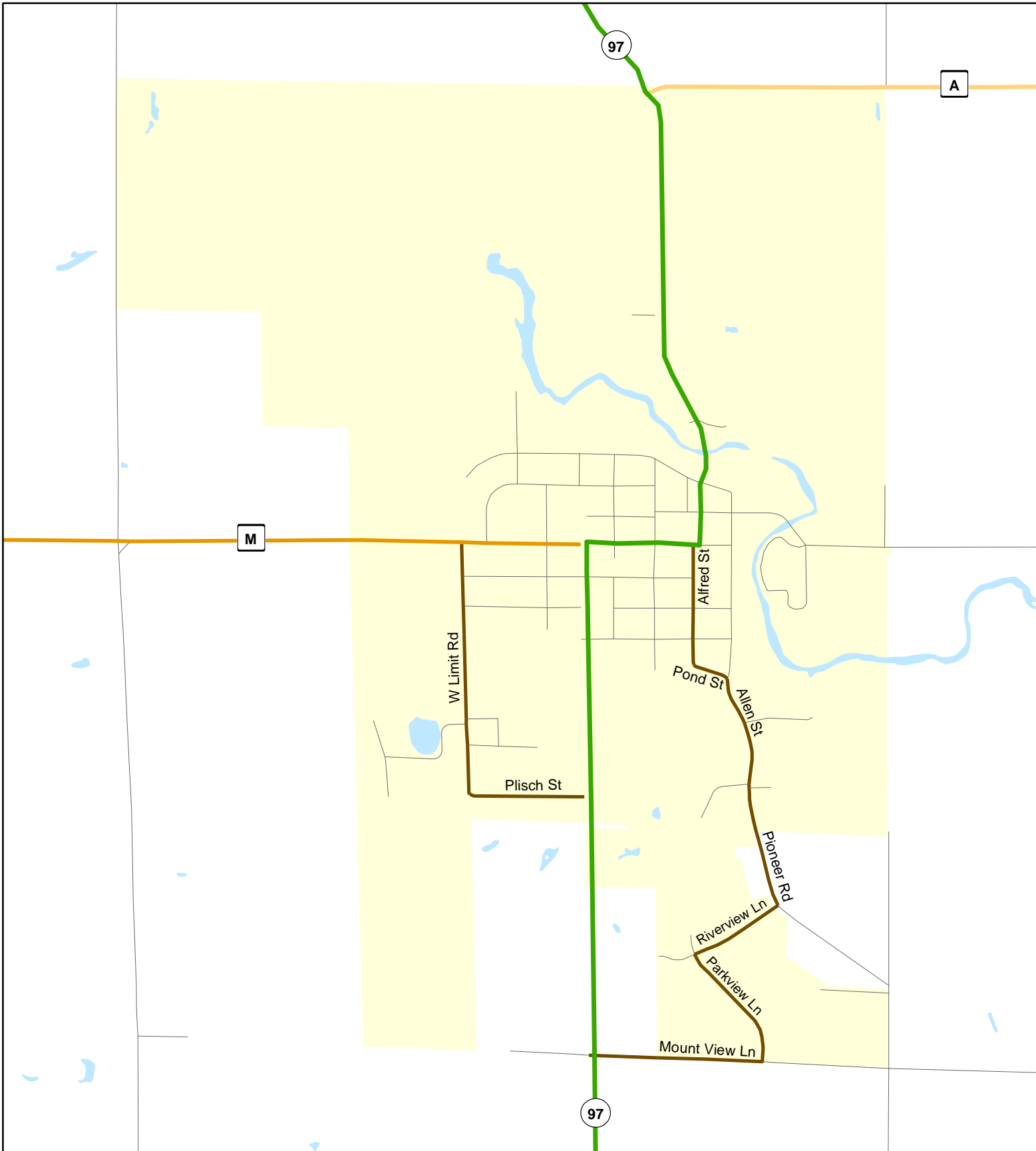
Chart “C” Communities

Page

- 3 Athens
- 4 Hatley
- 5 Knowlton
- 6 Marathon City
- 7 Spencer
- 8 Stratford

**Chart C Community: ATHENS
County: Marathon**

Functional Classification 04/28/2017



Functional Classification

- Principal Arterial
- Minor Arterial
- Major Collector
- Minor Collector
- Chart C Minor Collector
- - planned Principal Arterial
- - planned Minor Arterial
- - planned Major Collector
- - planned Minor Collector

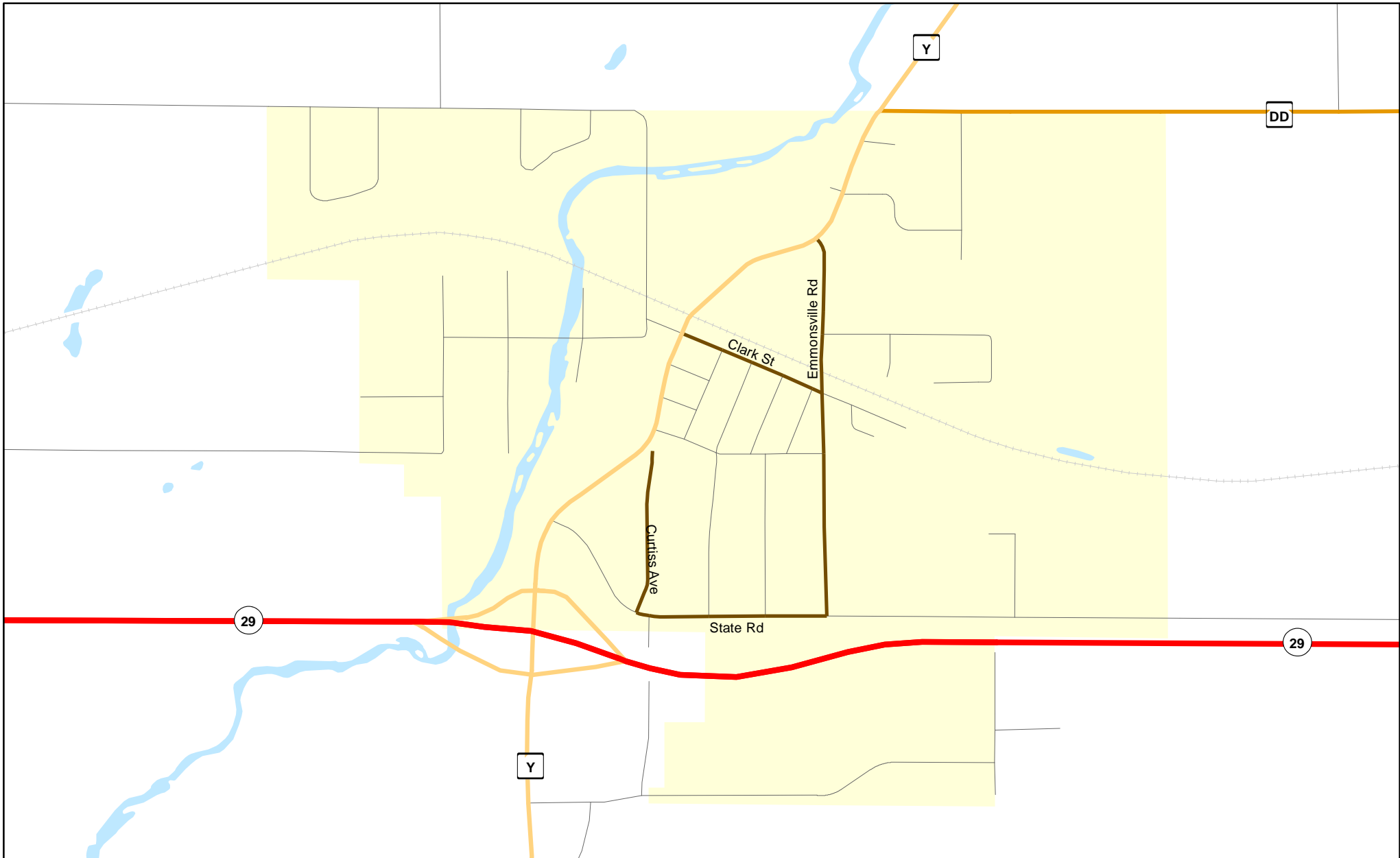
WisDOT Bureau of Planning and Economic Development
FHWA approval: 04/28/2017
PDF created: 04/04/2017

**Chart C Community: ATHENS
County: Marathon**



Chart C Community: HATLEY
County: Marathon

Functional Classification 04/28/2017



Functional Classification

- Principal Arterial
- Minor Arterial
- Major Collector
- Minor Collector
- Chart C Minor Collector
- - - planned Principal Arterial
- - - planned Minor Arterial
- - - planned Major Collector
- - - planned Minor Collector

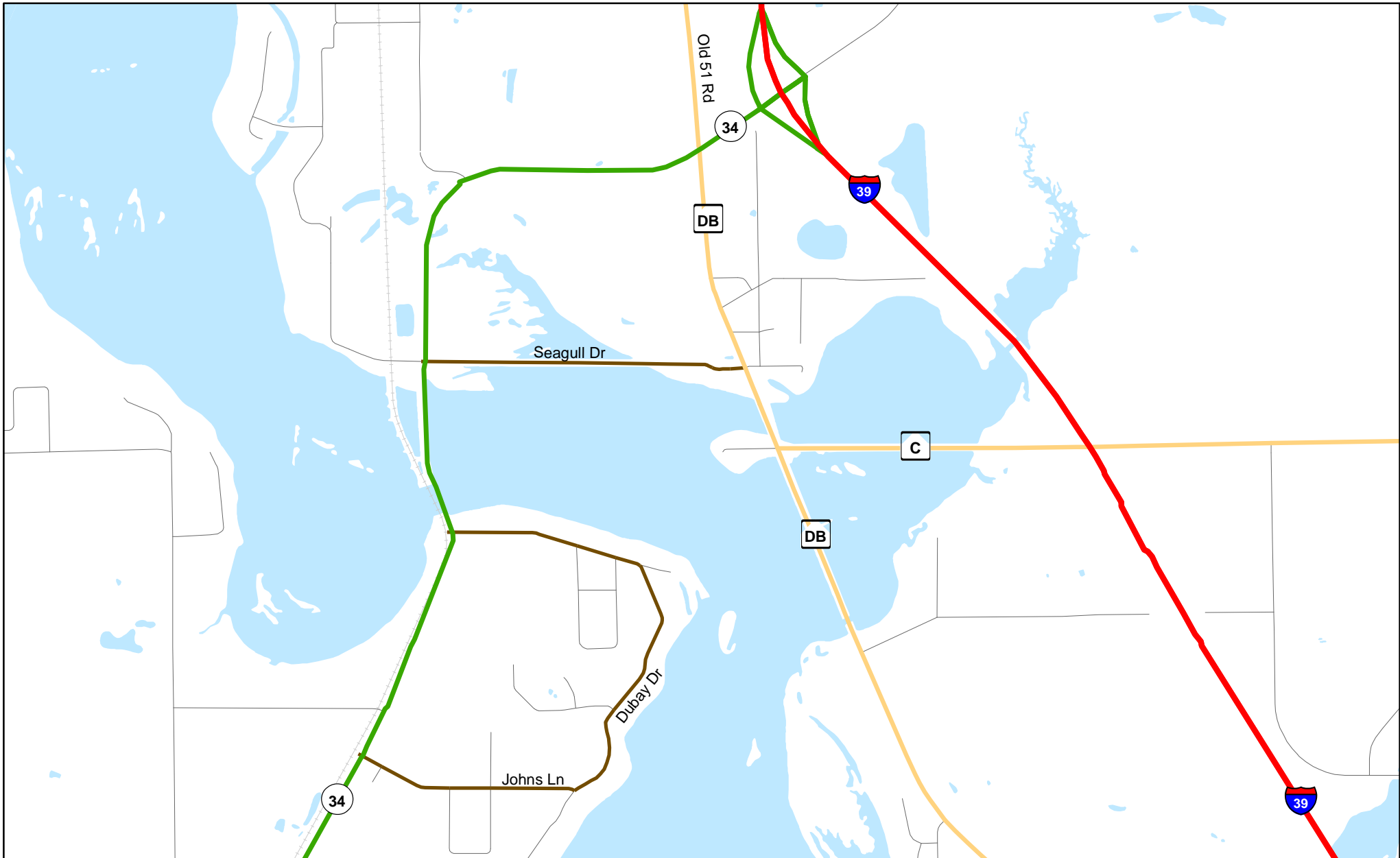
WisDOT Bureau of Planning and Economic Development
FHWA approval: 04/28/2017
PDF created: 04/04/2017

Chart C Community: HATLEY
County: Marathon



Chart C Community: KNOWLTON (unincorporated) County: Marathon

Functional Classification 04/28/2017



Functional Classification

- Principal Arterial
- Minor Arterial
- Major Collector
- Minor Collector
- Chart C Minor Collector
- planned Principal Arterial
- planned Minor Arterial
- planned Major Collector
- planned Minor Collector

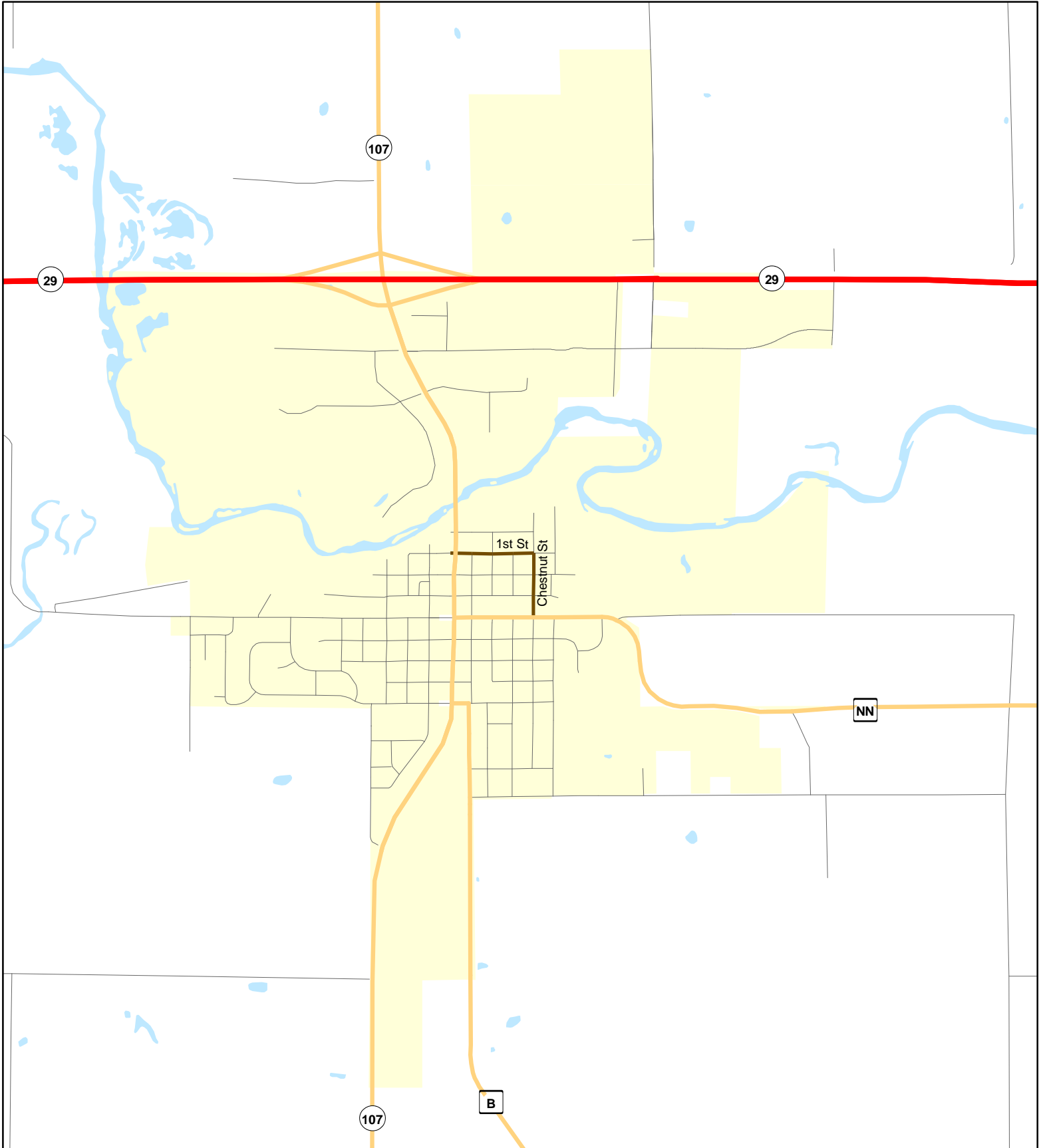
WisDOT Bureau of Planning and Economic Development
FHWA approval: 04/28/2017
PDF created: 04/04/2017

Chart C Community: KNOWLTON (unincorporated)
County: Marathon



Chart C Community: MARATHON CITY County: Marathon

Functional Classification 04/28/2017



Functional Classification

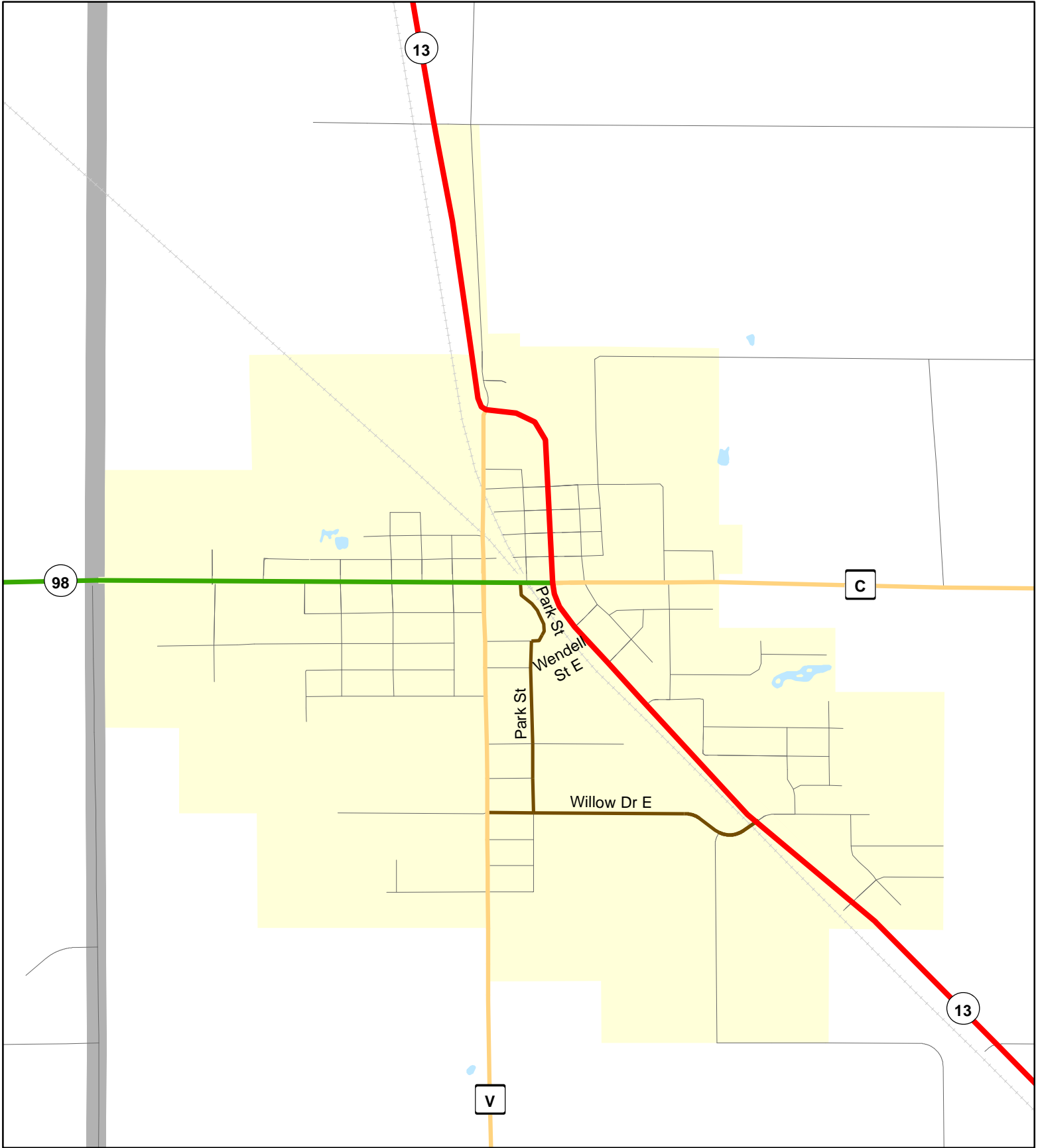
- | | | | | |
|----------------------------|------------------------|-------------------------|-------------------------|-------------------------|
| Principal Arterial | Minor Arterial | Major Collector | Minor Collector | Chart C Minor Collector |
| planned Principal Arterial | planned Minor Arterial | planned Major Collector | planned Minor Collector | |

WisDOT Bureau of Planning and Economic Development
FHWA approval: 04/28/2017
PDF created: 04/04/2017

Chart C Community: MARATHON CITY County: Marathon

**Chart C Community: SPENCER
County: Marathon**

Functional Classification 04/28/2017



Functional Classification

- Principal Arterial
- Minor Arterial
- Major Collector
- Minor Collector
- Chart C Minor Collector
- planned Principal Arterial
- planned Minor Arterial
- planned Major Collector
- planned Minor Collector

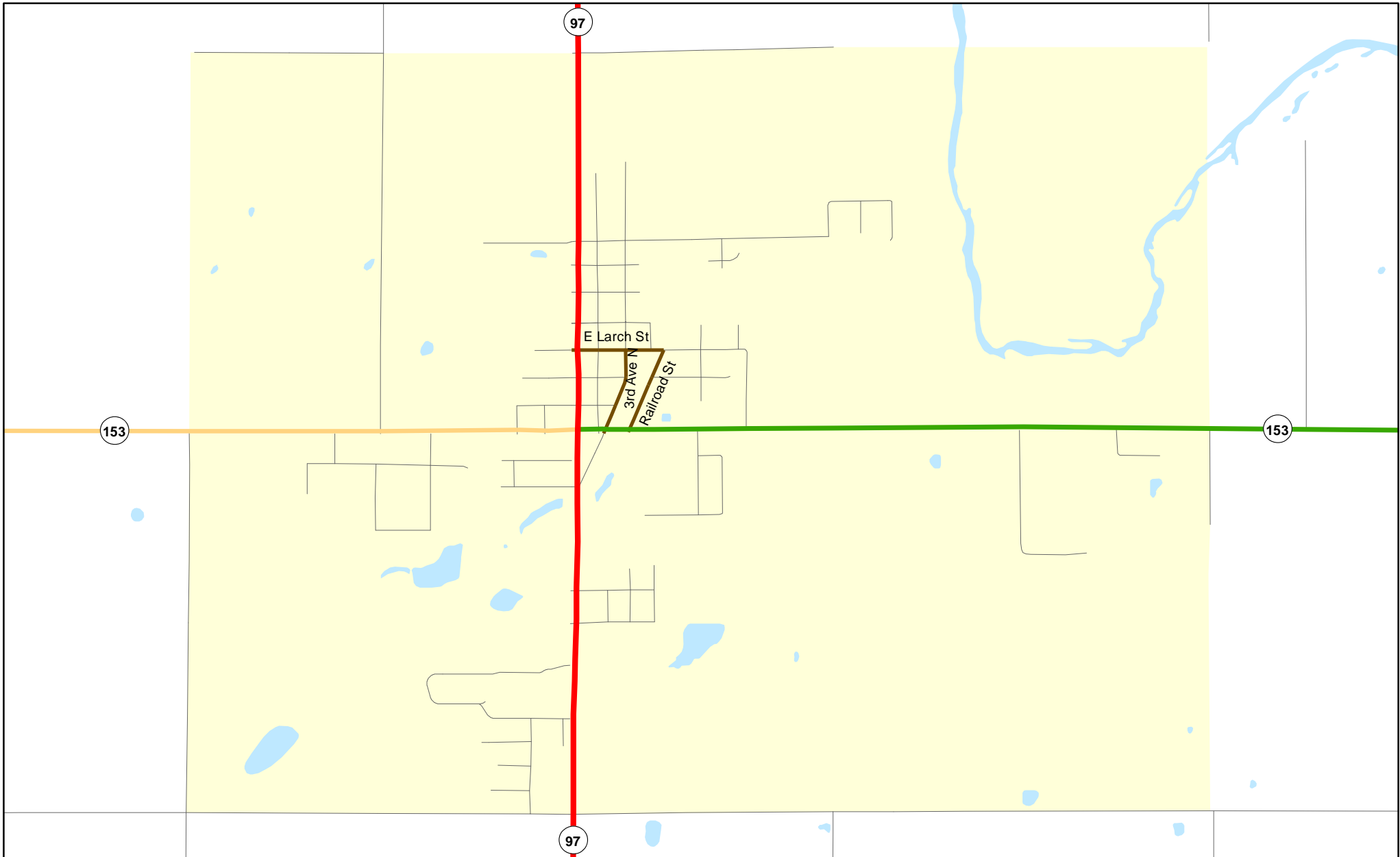
WisDOT Bureau of Planning and Economic Development
FHWA approval: 04/28/2017
PDF created: 04/04/2017

**Chart C Community: SPENCER
County: Marathon**



Chart C Community: STRATFORD
County: Marathon

Functional Classification 04/28/2017



Functional Classification

- Principal Arterial
- Minor Arterial
- Major Collector
- Minor Collector
- Chart C Minor Collector
- - - planned Principal Arterial
- - - planned Minor Arterial
- - - planned Major Collector
- - - planned Minor Collector

WisDOT Bureau of Planning and Economic Development
FHWA approval: 04/28/2017
PDF created: 04/04/2017

Chart C Community: STRATFORD
County: Marathon