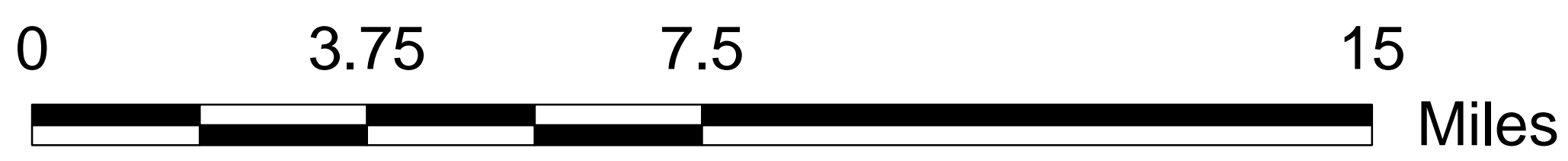
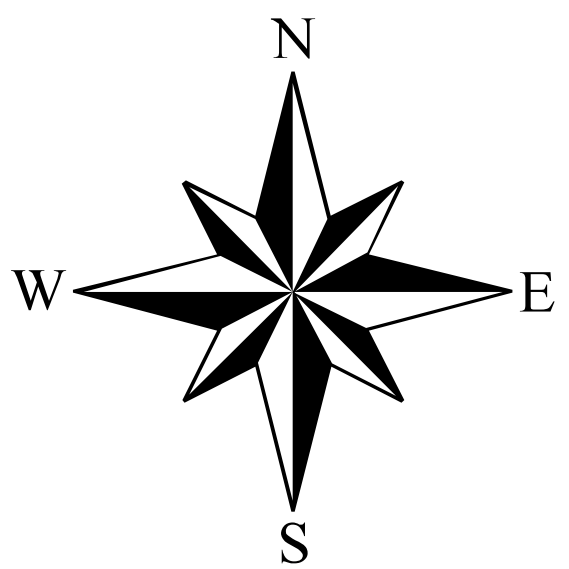
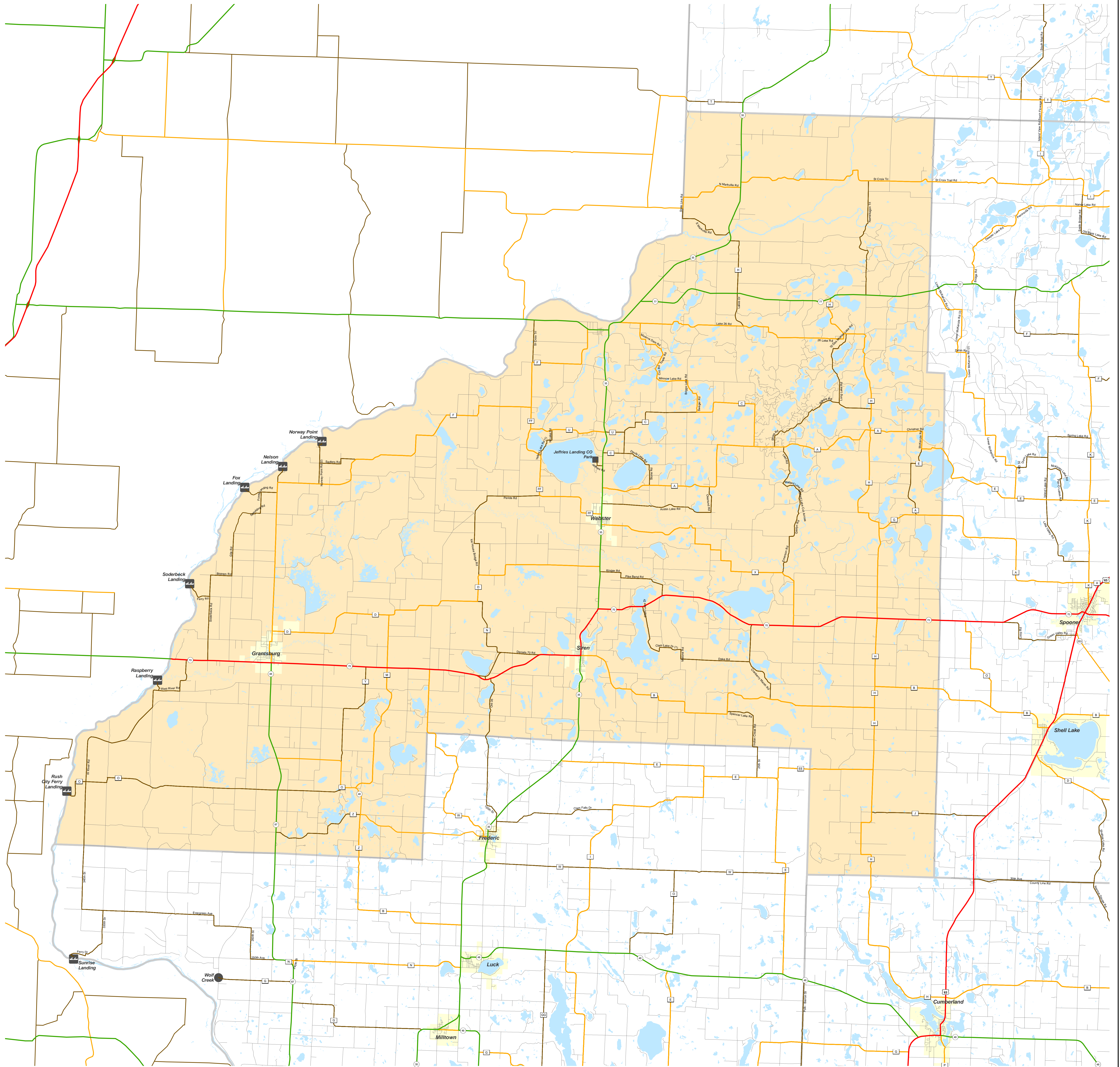


BURNETT

Functional Classification

03/30/2012

BURNETT



Legend	
Existing	Planned

(In urban areas, only connecting links of rural routes are shown.)

The information on these maps and produced from these maps was created for the official use of the Wisconsin Department of Transportation (WisDOT). Any other use, while not prohibited, is the sole responsibility of the user. WisDOT expressly disclaims all liability regarding fitness of use of the information for other than official WisDOT business.

BURNETT

Chart “C” Communities

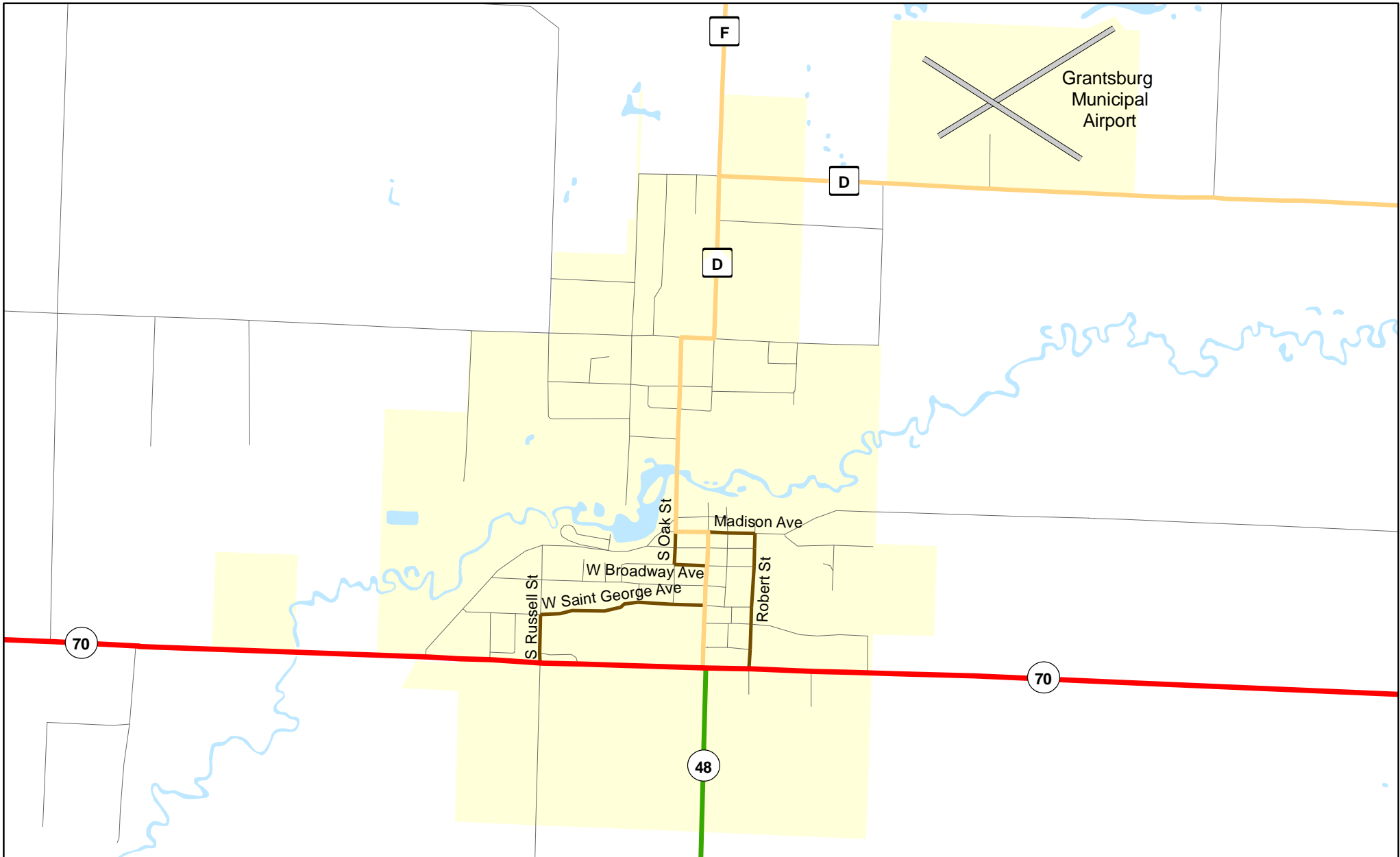
Page

- 3 Grantsburg
- 4 Siren
- 5 Webster



Chart C Community: GRANTSBURG
County: Burnett

Functional Classification 03/30/2012



Functional Classification

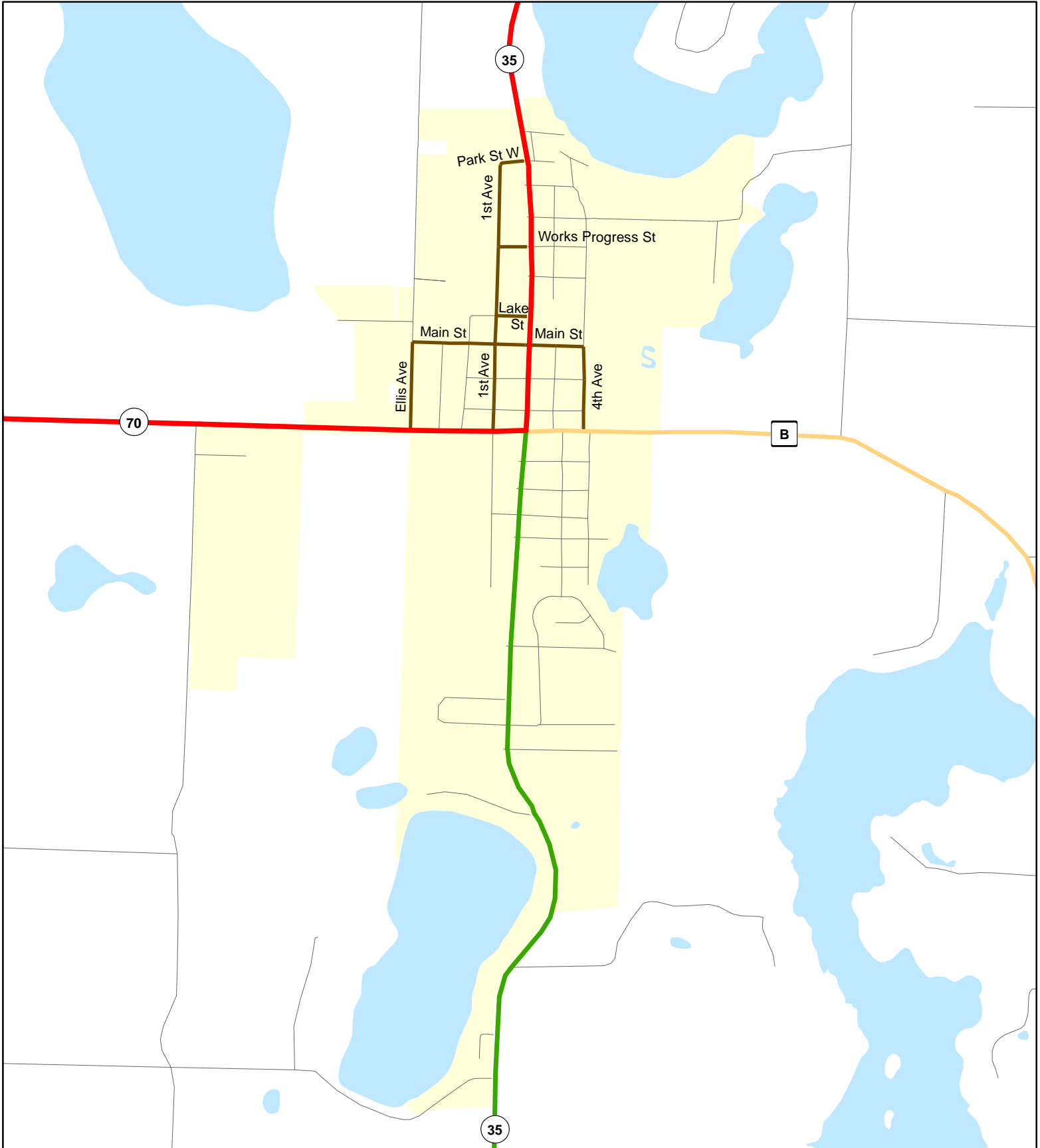
- Principal Arterial
- Minor Arterial
- Major Collector
- Minor Collector
- Chart C Minor Collector
- - - planned Principal Arterial
- - - planned Minor Arterial
- - - planned Major Collector
- - - planned Minor Collector

WisDOT Bureau of Planning and Economic Development
FHWA approval: 03/30/2012
PDF created: 07/27/2011

Chart C Community: GRANTSBURG
County: Burnett

**Chart C Community: SIREN
County: Burnett**

Functional Classification 03/30/2012



Functional Classification

- Principal Arterial
- Minor Arterial
- Major Collector
- Minor Collector
- Chart C Minor Collector
- - planned Principal Arterial
- - planned Minor Arterial
- - planned Major Collector
- - planned Minor Collector

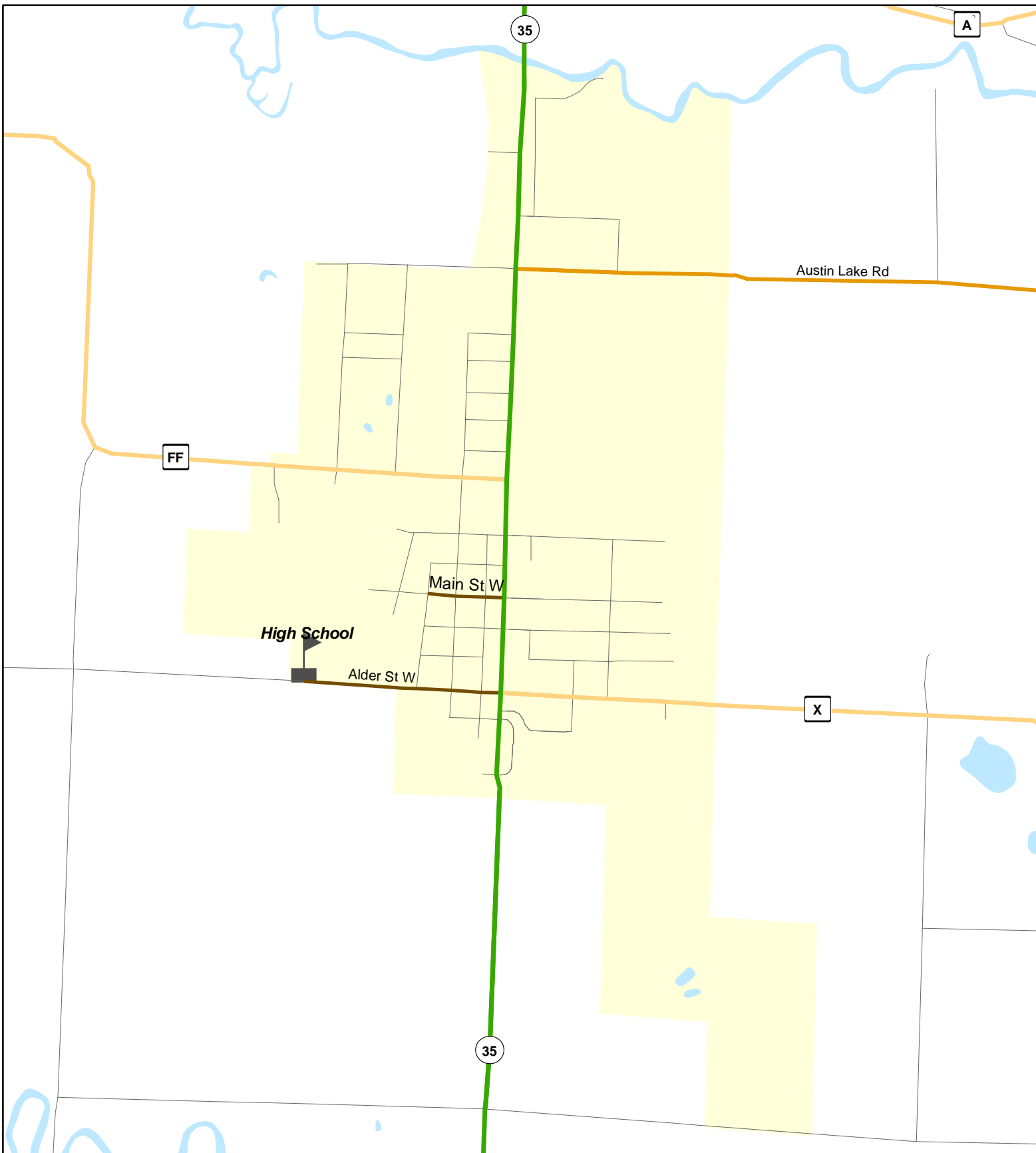
WisDOT Bureau of Planning and Economic Development
FHWA approval: 03/30/2012
PDF created: 01/10/2012

**Chart C Community: SIREN
County: Burnett**



Chart C Community: WEBSTER
County: Burnett

Functional Classification 03/30/2012



Functional Classification

- | | | | | |
|----------------------------|------------------------|-------------------------|-------------------------|-------------------------|
| Principal Arterial | Minor Arterial | Major Collector | Minor Collector | Chart C Minor Collector |
| planned Principal Arterial | planned Minor Arterial | planned Major Collector | planned Minor Collector | |

WisDOT Bureau of Planning and Economic Development
FHWA approval: 03/30/2012
PDF created: 07/27/2011

Chart C Community: WEBSTER
County: Burnett