

4/9/2024

Vacancies/Positions Approved

Vacancies/Positions Under Consideration

|                                  |             |     |
|----------------------------------|-------------|-----|
| <b>Southwest Region Director</b> |             |     |
| <b>10-21-00-00-00</b>            |             |     |
| 013678                           | MAD         | 100 |
| Schave, Daniel                   | DOT Manager |     |

|                |               |     |
|----------------|---------------|-----|
| 005701         | MAD           | 100 |
| Bie, Michael   | Comm Spec Adv |     |
| 009892         | MAD           | 100 |
| Punzel, Hannah | Comm Spec Sr  |     |

|                       |             |     |
|-----------------------|-------------|-----|
| <b>10-21-00-00-00</b> |             |     |
| 011635                | MAD         | 100 |
| Hoyt, Randall         | DOT Manager |     |

0  
0  
0

4

Vacancies/Positions Approved  
 Vacancies/Positions Under Consideration

|                |             |  |
|----------------|-------------|--|
| 10-21-00-00-00 |             |  |
| Schave, Daniel | DOT Manager |  |

|               |  |  |
|---------------|--|--|
| Hoyt, Randall |  |  |
| DOT Manager   |  |  |

|                              |               |     |
|------------------------------|---------------|-----|
| SW System Operations Section |               |     |
| 10-21-23-00-00               |               |     |
| 019094                       | LAX           | 100 |
| Steiner, John                | DOT Eng Chief |     |

|                             |               |     |
|-----------------------------|---------------|-----|
| SW Systems Planning Section |               |     |
| 10-21-22-00-00              |               |     |
| 012424                      | LAX           | 100 |
| Flottmeyer, Stephen         | DOT Eng Chief |     |

|                       |               |     |
|-----------------------|---------------|-----|
| SW Maintenance Unit 1 |               |     |
| 10-21-23-11-00        |               |     |
| 022210                | LAX           | 100 |
| Vydrzal, Richard      | CE Trans Supv |     |

|                       |               |     |
|-----------------------|---------------|-----|
| SW Maintenance Unit 2 |               |     |
| 10-21-23-12-00        |               |     |
| 012239                | MAD           | 100 |
| Brooks, Amy           | CE Trans Supv |     |

|                   |               |     |
|-------------------|---------------|-----|
| SW Traffic Unit 1 |               |     |
| 10-21-23-21-00    |               |     |
| 005182            | MAD           | 100 |
| Dutta, Ruchi      | CE Trans Supv |     |

|                   |               |     |
|-------------------|---------------|-----|
| SW Traffic Unit 2 |               |     |
| 10-21-23-22-00    |               |     |
| 011291            | LAX           | 100 |
| Winga, Andrew     | CE Trans Supv |     |

|                     |               |     |
|---------------------|---------------|-----|
| SW Planning Unit 2  |               |     |
| 10-21-22-33-00      |               |     |
| 005994              | LAX           | 100 |
| Sommerfield, Arthur | CE Trans Supv |     |

|                    |               |     |
|--------------------|---------------|-----|
| SW Planning Unit 1 |               |     |
| 10-21-22-31-00     |               |     |
| 012158             | MAD           | 100 |
| Ellias, Michelle   | CE Trans Supv |     |

|                    |                  |     |
|--------------------|------------------|-----|
| Maintenance        |                  |     |
| 008991             | LAX              | 100 |
| Greiner, Michael   | CE Trans Adv     |     |
| 338647             | LAX              | 100 |
| Adams, Jay         | CE Trans Adv     |     |
| Fmr Pomerening     | LAX              | 100 |
| VACANT             | Trans Spec Adv   |     |
| 317430             | LAX              | 100 |
| Benish, David      | Trans Spec or Sr |     |
| 007040             | LAX              | 100 |
| Leinweber, Kenneth | Trans Spec Adv   |     |
| Fmr Punzel         | MAD              | 100 |
| VACANT             | Trans Spec Sr    |     |
| 000154             | LAX              | 100 |
| Haas, Jacqueline   | Financial Spec   |     |

|                |                |     |
|----------------|----------------|-----|
| Maintenance    |                |     |
| 006344         | MAD            | 100 |
| Kaiser, Peter  | CE Trans Adv   |     |
| Fmr Ciobanu    | MAD            | 100 |
| VACANT         | CE Trans Adv   |     |
| 015802         | MAD            | 100 |
| Murray, Ryan   | Trans Spec Adv |     |
| 034753         | MAD            | 100 |
| Lammert, Terry | Trans Spec Adv |     |
| 013454         | MAD            | 100 |
| Franks, Randy  | Trans Spec Adv |     |
| 005338         | MAD            | 100 |
| Buss, Tammy    | Trans Spec Adv |     |

|                |              |      |
|----------------|--------------|------|
| Freight        |              |      |
| Fmr Nast       | MAD          | 100  |
| VACANT         | CE Trans Sr  | FRGT |
| Traffic        |              |      |
| 301857         | MAD          | 100  |
| Koster, Jason  | CE Trans Adv |      |
| 318291         | MAD          | 100  |
| LaMere, Joseph | CE Trans Adv |      |
| 009328         | MAD          | 100  |
| Akter, Nayla   | CE Trans     |      |

|                   |                |     |
|-------------------|----------------|-----|
| Signal & Lighting |                |     |
| 016922            | LAX            | 100 |
| Webb, Collin      | CE Trans Adv   |     |
| 020024            | MAD            | 100 |
| Heitz, Graham     | CE Trans Adv   |     |
| 006357            | MAD            | 100 |
| Heineck, Lindsey  | CE Trans Adv   |     |
| 022726            | LAX            | 100 |
| Schultz, Kyle     | CE Trans       |     |
| 014075            | MAD            | 100 |
| Roth, Dale        | Trans Spec Adv |     |

|                   |                |     |
|-------------------|----------------|-----|
| Access Management |                |     |
| 002523            | MAD            | 100 |
| Braun, Wendy      | CE Trans Adv   |     |
| Fmr Mancheski     | MAD            | 100 |
| VACANT-A          | CE Sr/Adv      |     |
| 021337            | LAX            | 100 |
| Rox, Joseph       | Trans Spec Adv |     |
| 030096            | MAD            | 100 |
| Lybek, Rita       | Trans Spec Adv |     |
| 014510            | MAD            | 100 |
| Hinkle, Scot      | Trans Spec Adv |     |

|                   |              |     |
|-------------------|--------------|-----|
| Scoping Unit      |              |     |
| 033633            | MAD          | 100 |
| Somerfeld, Steven | CE Trans Adv |     |
| 014525            | MAD          | 100 |
| Potter, Rachel    | CE Trans Adv |     |
| 318295            | LAX          | 100 |
| Boado, Jaime      | CE Trans Adv |     |
| 338691            | MAD          | 100 |
| Waldo, Todd       | CE Trans Adv |     |

|                     |              |     |
|---------------------|--------------|-----|
| Work Zone & Permits |              |     |
| 325264              | LAX          | 100 |
| Schneider, Joseph   | CE Trans Adv |     |
| Fmr Wells           | MAD          | 100 |
| VACANT-A            | CE Trans     |     |
| Fmr Koster          | MAD          | 100 |
| VACANT-A            | CE Trans Adv |     |

|                    |              |     |
|--------------------|--------------|-----|
| Safety             |              |     |
| Fmr Schmid         | MAD          | 100 |
| VACANT-A           | CE Trans Adv |     |
| 017185             | LAX          | 100 |
| Byom, Bradley      | CE Trans Adv |     |
| 007140             | MAD          | 100 |
| Wells, Christopher | CE Trans Sr  |     |

|                   |                |     |
|-------------------|----------------|-----|
| Local Program     |                |     |
| 003139            | LAX            | 100 |
| Winterton, Robert | CE Trans Adv   |     |
| 021065            | MAD            | 100 |
| Workman, Brandi   | Trans Spec Adv |     |

|                    |                      |     |
|--------------------|----------------------|-----|
| Programming Unit   |                      |     |
| 013305             | MAD                  | 100 |
| Romenesko, Vicki   | CE Trans Adv         |     |
| 020748             | LAX                  | 100 |
| Richardson, Linda  | CE Trans Adv         |     |
| 318306             | LAX                  | 100 |
| Haller, Rebecca    | Trans Prog Coord Adv |     |
| 012111             | MAD                  | 100 |
| Whirry, Joseph     | Trans Prog Coord Adv |     |
| 028758             | MAD                  | 100 |
| Burkeland, Theresa | Trans Prog Coord Adv |     |

|                   |                |     |
|-------------------|----------------|-----|
| Signing & Marking |                |     |
| 000219            | LAX            | 100 |
| Glindinning, Eric | Trans Spec Adv |     |
| 007358            | LAX            | 100 |
| Keppel, Kory      | Trans Spec Sr  |     |

|                   |                |     |
|-------------------|----------------|-----|
| Signing & Marking |                |     |
| 018780            | MAD            | 100 |
| Punzel, Timm      | Trans Spec Adv |     |
| 015578            | MAD            | 100 |
| Holloway, Jeffrey | Trans Spec Sr  |     |

|                 |             |     |
|-----------------|-------------|-----|
| Electrical      |             |     |
| 034402          | MAD         | 100 |
| Lovell, Terance | Electrician |     |
| 004153          | MAD         | 100 |
| Erickson, John  | Electrician |     |
| 005620          | MAD         | 100 |
| Artin, Benjamin | Electrician |     |
| 011444          | LAX         | 100 |
| Bauer, Steven   | Electrician |     |
| 019020          | LAX         | 100 |
| Barrette, Jon   | Electrician |     |
| 031533          | LAX         | 100 |
| Reuter, Randy   | Electrician |     |

|                     |              |     |
|---------------------|--------------|-----|
| Corridor Studies    |              |     |
| Fmr Kratt           | LAX          | 100 |
| VACANT-A            | CE-Trans Adv |     |
| 012529              | MAD          | 100 |
| Koprowski, Thomas   | URP Adv      |     |
| 315507              | LAX          | 100 |
| Scheffhout, Francis | URP Adv      |     |

|                     |              |     |
|---------------------|--------------|-----|
| Multimodal Planning |              |     |
| 003057              | MAD          | 100 |
| Brokaw, Michelle    | CE Trans Adv |     |

|      |      |
|------|------|
| 2.00 | 8.00 |
| 0.00 |      |
| 0.00 |      |

|      |      |
|------|------|
| 1.00 | 8.00 |
| 0.00 |      |
| 0.00 |      |

|      |      |
|------|------|
| 1.00 | 6.00 |
| 2.00 |      |
| 0.00 |      |

|      |       |
|------|-------|
| 0.00 | 14.00 |
| 1.00 |       |
| 0.00 |       |

|      |       |
|------|-------|
| 0.00 | 10.00 |
| 2.00 |       |
| 0.00 |       |

|      |       |
|------|-------|
| 0.00 | 11.00 |
| 0.00 |       |
| 0.00 |       |

Vacancies/Positions Approved  
 Vacancies/Positions Under Consideration

Region Director  
 10-21-00-00-00

Schave, Daniel DOT Manager

Hoyt, Randall DOT Manager

**SW Technical Services Section**  
 10-21-24-00-00  
 Fmr Schave MAD 100  
 VACANT-A DOT TSS Chief

**SW ENG SERV UNIT 1**  
 10-21-24-34-00  
 000729 LAX 100  
 Mikshowsky, Travis CE Trans Supv

**SW ENG SERV UNIT 2**  
 10-21-24-35-00  
 033576 LAX 100  
 Fredrickson, Jennifer Trans Spec Supv

**SW ENG SERV UNIT 3**  
 10-21-24-36-00  
 Fmr Glentz LAX 100  
 VACANT-A Trans Spec Supv

**SW ENG SERV UNIT 4**  
 10-21-24-37-00  
 001460 MAD 100  
 Kilday, Alison Trans Spec Supv

**SW REAL ESTATE UNIT**  
 10-21-24-43-00  
 Fmr Schlagel LAX 100  
 VACANT-A RE Supv

**SW ADMINISTRATIVE UNIT**  
 10-21-24-51-00  
 017886 LAX 100  
 Werner, Kim DOT Supv

**Pavements**  
 000317 LAX 100  
 Phillips, Andrew CE Trans Adv

**Environmental/Erosion Control**  
 311821 MAD 100  
 Fillipi, Peter CE Trans Adv  
 013961 LAX 100  
 Kube, Sam CE Trans Adv

**Surveys**  
 009963 LAX 100  
 Feldbinder, Joerg Surveyor Adv Idwrkr  
 003430 MAD 100  
 Alvarez, Jarod Surveyor Adv  
 003399 LAX 100  
 Shea, Brandon Surveyor Sr  
 301624 MAD 100  
 Moran, John Trans Spec Adv

**Utility**  
 017641 MAD 100  
 Olson, Richard CE Trans Adv  
 016665 MAD 100  
 DuFoe-Guiles, Noah CE Trans/Sr  
 009916 MAD 100  
 Keck, Bobbie Trans Spec Adv Idwrkr  
 030622 LAX 100  
 Hodges, James Trans Spec Sr  
 036924 MAD 100  
 Burmeister, Scott Trans Spec Sr  
 318305 LAX 100  
 Wynn, Robert Trans Spec Sr

**Real Estate**  
 009198 LAX 100  
 Messling, Gregory RE Spec Adv Idwrkr  
 006670 MAD 100  
 Fandrich, John RE Spec Adv Idwrkr  
 004818 MAD 100  
 Haak, Annette RE Spec Sr  
 338567 MAD 100  
 Kunz, Edward RE Spec Sr  
 016188 MAD 100  
 Anderson, Jenice RE Spec  
 015050 LAX 100  
 Weaver, Amanda RE Spec  
 010922 MAD 100  
 Schumann, Dione RE Spec  
 011202 LAX 100  
 Noelke, Laurie RE Spec  
 005264 MAD 100  
 Yszenga, Elizabeth RE Spec  
 002607 MAD 100  
 Griffin, Elizabeth RE Prog Assoc

**Administrative**  
 325962 MAD 100  
 Moore, Jo-Ann Prog Pol Anl Adv  
 014744 MAD 100  
 Robb, Mary Prog Pol Anl Adv  
 Fmr Actherberg MAD 100  
 VACANT Prog Pol Anl Adv  
 007247 LAX 100  
 Lisowski, Marian Rec Prog Assoc Adv  
 318288 MAD 100  
 Lightfoot, Sharon Rec Prog Assoc  
 317613 MAD 100  
 Lubenow, Kristine Oper Prog Assoc  
 Fmr Bare MAD 100  
 VACANT Oper Prog Assoc

**Soils/ Materials/QA/IAP**  
 004123 MAD 100  
 Markquart, Melissa CE Trans Adv  
 338606 MAD 100  
 Hassen, Hassen CE Trans Sr  
 018866 MAD 100  
 Meyer, Bryton CE Trans Sr  
 313098 MAD 100  
 Sobotik, Annabelle CE Trans  
 005838 MAD 100  
 Syron, Scott Trans Spec Adv  
 338590 MAD IAP / PDS 100  
 Platt, Matthew Trans Spec Adv  
 015288 MAD 100  
 Smith, Matthew Trans Spec Adv  
 004869 MAD 100  
 Mueller, Adam Trans Spec Adv  
 022672 LAX 100  
 Frazer, Jeanette Trans Spec Adv  
 020420 LAX 100  
 Young, Cayley Trans Spec Adv  
 Fmr Young LAX 100  
 VACANT-A Trans Spec Adv

**EARS Adv**  
 036151 MAD 100  
 McDonald, Jessica EARS Adv  
 011243 LAX 100  
 Vetsch, Stephen EARS Adv  
 011533 MAD 100  
 Taylor, Brian EARS Adv  
 019097 MAD 100  
 Jahns, Anna EARS Adv  
 525029 LAX 100P  
 Atwater, Sara EARS Adv

**Plats**  
 009619 LAX 100  
 Schlagel, Cory Surveyor Adv  
 LAX 100  
 Schinke, Michael Surveyor Adv  
 301617 MAD 100  
 Zick, Russell Surveyor Sr

**CADDS**  
 005468 MAD 100  
 Morris, Matthew CADD Spec Adv

**Litigation**  
 000472 LAX 100  
 Pearson, Tracy RE Spec Adv

**Regional LPA**  
 020797 MAD 100  
 Kneip, Angela RE Spec Adv

**Railroad**  
 022632 MAD 100  
 Beckman, Teri Trans Spec Adv  
 011734 LAX 100  
 Willinger, Scott Trans Spec Adv

0.00 14.00  
 1.00 0

0.00 7.00  
 0.00 1

0.00 8.00  
 2.00 0

0.00 7.00  
 0.00 0

0.00 12.00  
 1.00 0

2.00 6.00  
 0.00 0

|                                     |             |
|-------------------------------------|-------------|
| Regional Director<br>10-21-00-00-00 |             |
| Schave, Daniel                      | DOT Manager |
| Hoyt, Randall                       |             |
| DOT Manager                         |             |

|  |               |     |
|--|---------------|-----|
| SW Project Development Section 1<br>10-21-26-00-00 |               |     |
| 338542   | MAD           | 100 |
| Oettinger, James                                   | DOT Eng Chief |     |

|  |               |     |
|--|---------------|-----|
| SW Project Development Section 2<br>10-21-27-00-00 |               |     |
| 016448   | LAX           | 100 |
| Kleinertz, Daniel                                  | DOT Eng Chief |     |

|                                 |               |     |
|---------------------------------|---------------|-----|
| SW PDS Unit 1<br>10-21-26-10-00 |               |     |
| 315505                          | MAD           | 100 |
| Kutschenreuter, Justin          | CE Trans Supv |     |

|                                 |               |     |
|---------------------------------|---------------|-----|
| SW PDS Unit 2<br>10-21-26-20-00 |               |     |
| 014713                          | MAD           | 100 |
| Schweiger, Marc                 | CE Trans Supv |     |

|                                 |               |     |
|---------------------------------|---------------|-----|
| SW PDS Unit 3<br>10-21-26-30-00 |               |     |
| 017500                          | MAD           | 100 |
| Howe, Michelle                  | CE Trans Supv |     |

|                                 |               |     |
|---------------------------------|---------------|-----|
| SW PDS Unit 4<br>10-21-27-10-00 |               |     |
| Fmr Kleinertz                   | LAX           | 100 |
| VACANT-A                        | CE Trans Supv |     |

|                                 |               |     |
|---------------------------------|---------------|-----|
| SW PDS Unit 5<br>10-21-27-20-00 |               |     |
| Fmr Bainter                     | LAX           | 100 |
| VACANT-A                        | CE Trans Supv |     |

|                                 |               |     |
|---------------------------------|---------------|-----|
| SW PDS Unit 6<br>10-21-27-30-00 |               |     |
| Bainter, John                   | LAX           | 100 |
|                                 | CE Trans Supv |     |

|                     |               |     |
|---------------------|---------------|-----|
| Jefferson / Dodge   |               |     |
| 034441              | MAD           | 100 |
| Lamb, Matthew       | CE Trans Adv  |     |
| 338638              | MAD           | 100 |
| Grainger, Jamie     | CE Trans Adv  |     |
| 019401              | MAD           | 100 |
| Hardy, Craig        | CE Trans Adv  |     |
| 037316              | MAD           | 100 |
| White, Jeremy       | CE Trans Sr   |     |
| 017814              | MAD           | 100 |
| Rampetsreiter, Mike | CE Trans Sr   |     |
| 338604              | MAD           | 100 |
| Deymarcos, Tijler   | CE Trans Sr   |     |
| 008333              | MAD           | 100 |
| Lamere, Bailey      | CE Trans Sr   |     |
| 021729              | MAD           | 100 |
| Doyle, Mickey       | CE Trans Sr   |     |
| 015168              | MAD           | 100 |
| Wright, Ethan       | CE Trans      |     |
| 001157              | MAD           | 100 |
| Luedtke, Andrew     | CE Trans      |     |
| 036515              | MAD           | 100 |
| Odoi, Robert        | Trans Spec Sr |     |

|                     |              |     |
|---------------------|--------------|-----|
| Sauk / Columbia     |              |     |
| 022316              | MAD          | 100 |
| Shrestha, Mahesh    | CE Trans Adv |     |
| 014049              | MAD          | 100 |
| Brecka, Gregory     | CE Trans Adv |     |
| 338643              | MAD          | 100 |
| Koebnick, Joshua    | CE Trans Adv |     |
| 338693              | MAD          | 100 |
| Nilson, Erik        | CE Trans Sr  |     |
| 018618              | MAD          | 100 |
| Carpenter, Donald   | CE Trans Sr  |     |
| 017579              | MAD          | 100 |
| Kendall, Emily      | CE Trans Sr  |     |
| 004771              | MAD          | 100 |
| Ziehlsdorf, Garrett | CE Trans Sr  |     |
| 338602              | MAD          | 100 |
| Carolan, Tanner     | CE Trans     |     |
| 00716               | MAD          | 100 |
| Twaroski, Lizbeth   | CE Trans     |     |
| 338666              | MAD          | 100 |
| Oberdorf, Ryan      | CE Trans     |     |

|                  |              |     |
|------------------|--------------|-----|
| Major Studies    |              |     |
| 016584           | MAD          | 100 |
| Berens, Jeffrey  | CE Trans Adv |     |
| Fmr Howe         | MAD          | 100 |
| VACANT-A         | CE Trans Adv |     |
| Fmr Adnerson     | MAD          | 100 |
| VACANT-A         | CE Trans Adv |     |
| Fmr Pritzlaff    | MAD          | 100 |
| VACANT-A         | CE Trans Adv |     |
| 303881           | MAD          | 100 |
| Marcos, Franklin | URP Adv      |     |

|                            |                |      |
|----------------------------|----------------|------|
| Monroe / Richland / Juneau |                |      |
| Fmr Vanderwielen           | LAX            | 100  |
| VACANT-A                   | CE Trans Adv   |      |
| 320132                     | LAX            | 100  |
| Schumaker, Nathaniel       | CE Trans Adv   |      |
| 338690                     | LAX            | 100  |
| Lex, Jered                 | CE Trans Adv   |      |
| 338696                     | LAX            | 100  |
| Davidson, Jonathan         | CE Trans Sr    |      |
| 037832                     | LAX            | 100  |
| Stange, Joseph             | CE Trans       |      |
| Fmr Mattison               | LAX            | 100  |
| VACANT                     | CE Trans       |      |
| 524793                     | LAX            | 100P |
| Gaulke, Jessica (Susie)    | CE Trans       |      |
| 011019                     | LAX            | 100  |
| Reynolds, Matthew          | CE Trans       |      |
| 013714                     | LAX            | 100  |
| Wittenberg, Mark           | Trans Spec Adv |      |
| 338563                     | LAX            | 100  |
| Sedlmayr, Shane            | Trans Spec Sr  |      |
| 019312                     | LAX            | 100  |
| Wolfe, Patrick             | Trans Spec Adv |      |

|                               |               |     |
|-------------------------------|---------------|-----|
| La Crosse / Vernon / Crawford |               |     |
| 006803                        | LAX           | 100 |
| Valenti, Paul                 | CE Trans Adv  |     |
| Fmr Adams                     | LAX           | 100 |
| VACANT-A                      | CE Trans Adv  |     |
| Fmr Fisher                    | LAX           | 100 |
| VACANT-A                      | CE Trans Adv  |     |
| 003360                        | LAX           | 100 |
| Kludy, Kathleen               | CE Trans Sr   |     |
| 006621                        | LAX           | 100 |
| Peterson, Shane               | CE Trans Sr   |     |
| Fmr Mikshowky                 | LAX           | 100 |
| VACANT                        | CE Trans Sr   |     |
| Fmr Meyer, Bry                | LAX           | 100 |
| VACANT                        | CE Trans Sr   |     |
| 338450                        | LAX           | 100 |
| Savoldelli, John              | CE Trans      |     |
| 338620                        | LAX           | 100 |
| Kankanamge, Yashodhya         | CE Trans      |     |
| 012390                        | LAX           | 100 |
| Miller, Gregory               | Trans Spec Sr |     |
| 006056                        | LAX           | 100 |
| Kleinschmidt, Skyler          | Trans Spec Sr |     |

|                    |                |     |
|--------------------|----------------|-----|
| Backbone           |                |     |
| 015846             | LAX            | 100 |
| Mikshowsky, Cory   | CE Trans Adv   |     |
| 008886             | LAX            | 100 |
| Meyer, Brian       | CE Trans Adv   |     |
| 008801             | LAX            | 100 |
| Dahl, Brian        | CE Trans Sr    |     |
| 338607             | LAX            | 100 |
| Palkowski, Matthew | CE Trans Sr    |     |
| 313639             | LAX            | 100 |
| Schmidt, Mytchel   | CE-Trans Sr    |     |
| 313626             | LAX            | 100 |
| Mecum, Brandyn     | CE Trans Sr    |     |
| 008202             | LAX            | 100 |
| Cypher, Dominic    | CE Trans       |     |
| 002757             | LAX            | 100 |
| Mueller, Taylor    | CE Trans       |     |
| Fmr Blum           | LAX            | 100 |
| VACANT-A           | Trans Spec Adv |     |
| 021259             | LAX            | 100 |
| Schumaker, Erica   | Trans Spec     |     |

|                  |              |     |
|------------------|--------------|-----|
| Program Controls |              |     |
| 014118           | MAD          | 100 |
| Guider, Valerie  | CE Trans Adv | DQA |
| Fmr VonRuden     | LAX          | 100 |
| VACANT-A         | CE Trans Adv |     |
| Fmr Simpson      | M/L          | 100 |
| VACANT-A         | CE Trans Adv | CQA |
| 021685           | LAX          | 100 |
| Horman, Charles  | PPA-Adv      |     |
| 335843           | MAD          | 100 |
| Antwi, Kwabena   | PPA Adv      |     |

|      |       |
|------|-------|
| 0.00 | 12.00 |
| 0.00 | 0     |
| 0.00 |       |

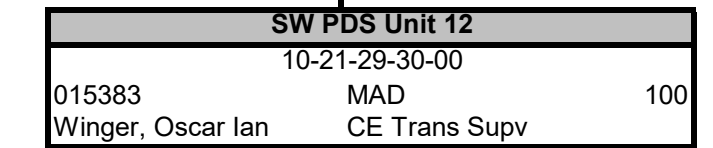
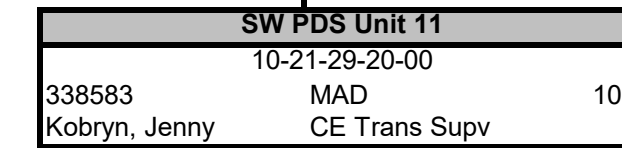
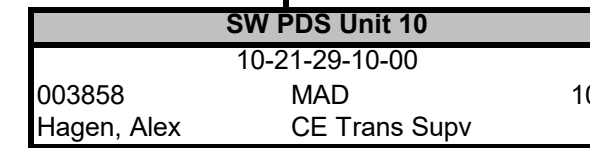
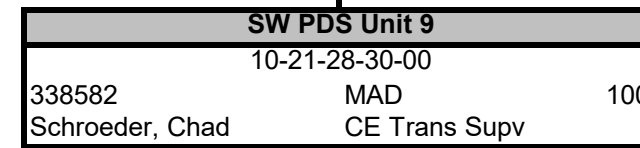
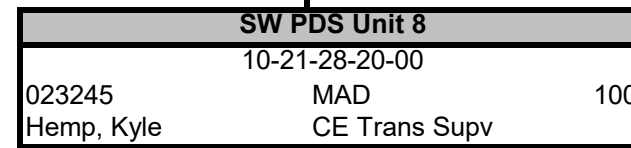
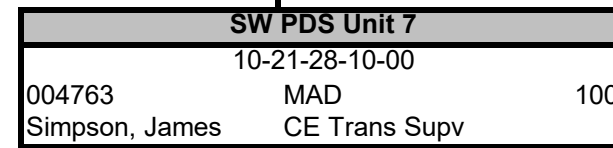
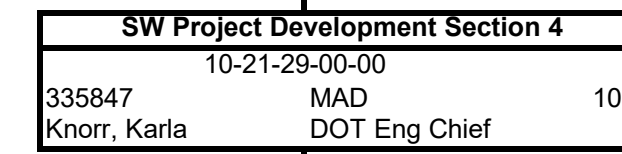
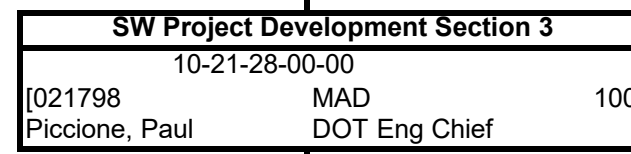
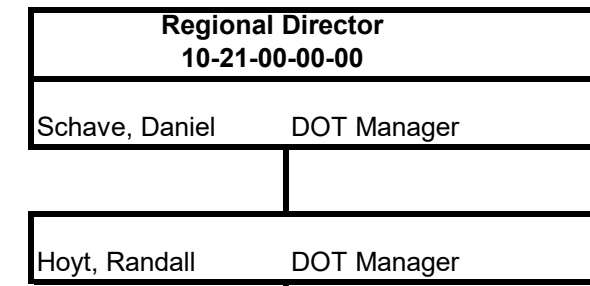
|      |       |
|------|-------|
| 0.00 | 12.00 |
| 0.00 | 0     |
| 0.00 |       |

|      |      |
|------|------|
| 0.00 | 3.00 |
| 3.00 | 0    |
| 0.00 |      |

|      |      |
|------|------|
| 1.00 | 8.00 |
| 2.00 | 1    |
| 0.00 |      |

|      |      |
|------|------|
| 2.00 | 8.00 |
| 3.00 | 0    |
| 0.00 |      |

|      |       |
|------|-------|
| 0.00 | 13.00 |
| 3.00 | 0     |
| 0.00 |       |



|                     |                |      |
|---------------------|----------------|------|
| <b>Rock / Green</b> |                |      |
| 338652              | MAD            | 100  |
| Hazard, Chris       | CE Trans Adv   |      |
| 020219              | MAD            | 100  |
| Nelson, Joshua      | CE Trans Adv   |      |
| 009526              | MAD            | 100  |
| Buerger, Anthony    | CE Trans Adv   |      |
| 524795              | MAD            | 100P |
| Anderson, Shaun     | CE Trans Sr    |      |
| 000961              | MAD            | 100  |
| Johnson, Matthew    | CE Trans Sr    |      |
| 006896              | MAD            | 100  |
| Perkins, Miles      | CE Trans       |      |
| 012074              | MAD            | 100  |
| Clements, Erin      | CE Trans       |      |
| 017383              | MAD            | 100  |
| Cole, Ryan          | CE Trans Sr    |      |
| 315508              | MAD            | 100  |
| Wellnitz, Joshua    | CE Trans       |      |
| 019132              | MAD            | 100  |
| Lukowitz, Anthony   | CE Trans       |      |
| 338591              | MAD            | 100  |
| Faherty, Neil       | Trans Spec Adv |      |
| 017467              | MAD            | 100  |
| Arensdorf, Jarod    | Trans Spec Adv |      |

|                      |              |     |
|----------------------|--------------|-----|
| <b>Local Program</b> |              |     |
| 012648               | MAD          | 100 |
| Koenig, Della        | CE Trans Adv |     |
| 338694               | MAD          | 100 |
| Pearson, Zachary     | CE Trans Adv |     |
| 007873               | MAD          | 100 |
| Betzel, Lorraine     | CE Trans Adv |     |
| 031298               | LAX          | 100 |
| Byom, Randy          | CE Trans Adv |     |
| 007862               | MAD          | 100 |
| Schoenmann, Joshua   | CE Trans Sr  |     |
| Fmr Burger           | MAD          | 100 |
| VACANT-A             | CE Trans Adv |     |
| Fmr Burg             | MAD          | 100 |
| VACANT-A             | CE Trans Adv |     |
| Fmr Guider           | MAD          | 100 |
| VACANT-A             | CE Trans Adv |     |

|                                 |                |     |
|---------------------------------|----------------|-----|
| <b>Grant / Iowa / Lafayette</b> |                |     |
| 338649                          | MAD            | 100 |
| Kopp, Adam                      | CE Trans Adv   |     |
| 010160                          | MAD            | 100 |
| Potter, Derek                   | CE Trans Adv   |     |
| 012865                          | MAD            | 100 |
| Ciobanu, Stefan                 | CE Trans Adv   |     |
| 338702                          | MAD PDS        | 100 |
| Perfetti, Leonard               | CE Trans Sr    |     |
| 013584                          | MAD            | 100 |
| Patterson, Brandon              | CE Trans Sr    |     |
| 020818                          | MAD            | 100 |
| Windsor, Paul                   | CE Trans       |     |
| 011792                          | MAD            | 100 |
| Gentilli, Jack                  | CE Trans       |     |
| Fmr Buss                        | MAD            | 100 |
| VACANT-A                        | Trans Spec Adv |     |

|                       |                |     |
|-----------------------|----------------|-----|
| <b>Dane 1</b>         |                |     |
| 014319                | MAD            | 100 |
| Sponem, Mark          | CE Trans Adv   |     |
| 019631                | MAD            | 100 |
| Coughlin, Amy         | CE Trans Adv   |     |
| 008071                | MAD            | 100 |
| Porter, Steven        | CE Trans Adv   |     |
| 338601                | MAD            | 100 |
| Bauknecht, Daniel     | CE Trans Sr    |     |
| 338641                | MAD            | 100 |
| Herrera Bautista, Pec | CE Trans Sr    |     |
| 020618                | MAD            | 100 |
| Bunzel, Daniel        | CE Trans       |     |
| 015209                | MAD            | 100 |
| Stevens, Logan        | CE Trans       |     |
| 014689                | MAD            | 100 |
| Shaw, Adam            | CE Trans       |     |
| 005473                | MAD            | 100 |
| Kluever, Lucas        | Trans Spec Adv |     |

|                   |              |     |
|-------------------|--------------|-----|
| <b>Dane 2</b>     |              |     |
| 012885            | MAD          | 100 |
| Schmidt, David    | CE Trans Adv |     |
| 003586            | MAD          | 100 |
| Kammerzelt, Cody  | CE Trans Adv |     |
| 338673            | MAD          | 100 |
| Drunasky, Kevin   | CE Trans Adv |     |
| 018548            | MAD          | 100 |
| Johnson, Anthony  | CE Trans Sr  |     |
| 338646            | MAD          | 100 |
| Campbell, Tim     | CE Trans Sr  |     |
| 013361            | MAD          | 100 |
| Hendrickson, Josh | CE Trans Sr  |     |
| 017341            | NAD          | 100 |
| Sveum, Jackson    | CE Trans     |     |
| 004367            | MAD          | 100 |
| Mayer, Mitchell   | CE Trans     |     |
| Mass, Elizabeth   | CE Trans     | 100 |
| Fmr Reisetter     | MAD          | 100 |
| VACANT-A          | CE Trans     |     |
| Fmr Lex, B        | MAD          | 100 |
| VACANT-A          | CE Trans     |     |
| 002483            | MAD          | 100 |
| Evenson, Jacen    | Trans Spec   |     |

|                             |                    |      |
|-----------------------------|--------------------|------|
| <b>Constultant Services</b> |                    |      |
| 003044                      | MAD                | 100  |
| Westerveld, Mark            | CE Trans Adv       |      |
| 015664                      | LAX                | 100  |
| Streich, Sharayah           | Contracts Spec Adv |      |
| 005634                      | MAD                | 100  |
| Caldwell, Trevor            | Contracts Spec Adv |      |
| 338559                      | LAX                | 100  |
| Lambert, Erin               | Contracts Spec Adv |      |
| 338646                      | MAD                | 100  |
| Radue, Benjamin             | Contracts Spec Adv |      |
| 016462                      | MAD                | 100  |
| Gifford, Bridget            | Contracts Spec Sr  |      |
| 525031                      | MAD                | 100P |
| Chapman, Vanessa            | Contracts Spec Sr  |      |
| 001148                      | LAX                | 100  |
| Dagley, Josephine           | Contracts Spec Sr  |      |
| Fmr Foster                  | MAD                | 100  |
| VACANT                      | Contracts Spec Sr  |      |

|      |       |
|------|-------|
| 0.00 | 12.00 |
| 0.00 | 1     |
| 0.00 |       |

|      |      |
|------|------|
| 0.00 | 7.00 |
| 3.00 | 0    |
| 0.00 |      |

|      |      |
|------|------|
| 0.00 | 8.00 |
| 1.00 | 0    |
| 0.00 |      |

|      |       |
|------|-------|
| 0.00 | 10.00 |
| 0.00 | 0     |
| 0.00 |       |

|      |       |
|------|-------|
| 0.00 | 12.00 |
| 2.00 | 0     |
| 0.00 |       |

|      |      |
|------|------|
| 1.00 | 8.00 |
| 0.00 | 1    |
| 0.00 |      |