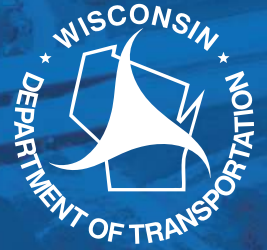


Bid Letting Update

November 14, 2023



HELPING DISADVANTAGED BUSINESS ENTERPRISES DO WORK WITH WISDOT

James Peterson Sons, Inc. proudly worked with the DBEs listed below who stepped up to meet an unexpected project expansion **AND** is on schedule to complete the project early:

DBE TRUCKING

CT Enterprises of Sand Creek, LLC
Cruz Trucking & Grading
Gorman Trucking, LLC
Paradise Trucking Corp.
Schill Trucking, Inc.

SAW CUTTING

Hard Rock Sawing & Drilling
Specialist, Co.

EROSION CONTROL & BEAM GUARD

Arbor Green, Inc.

DBE SUPPLIERS

Heider & Bott Company
American Construction Supplies, Inc.
Midnight Run Materials, LLC
P3 Infrastructure, Inc.

PRIME CONTRACTOR PROJECT SPOTLIGHT

James Peterson Sons, Inc.
Project: 1053-07-75
Marathon County/NC Region
STH 29



STH 29 is one of the most significant East-West highways in the State of Wisconsin. Connecting I94 to Green Bay, thousands of travelers use this highway every day for commuting, vacations, and commerce. It's an important highway for commercial freight with approximately 17.00% of its traffic being tractor trailers shuttling goods across the state. This is a well-traveled highway in North Central Wisconsin that takes a beating.

James Peterson Sons, Inc (JPS) was awarded the contract for the STH 29 project that focused on reconstructing the EB lanes from CTH H to CTH E in Marathon County. The DBE goal for this project was 4.00%. JPS exceeded this goal with a 6.15% commitment. Many DBE subcontractors committed to working on this project fulfilling many important functions including restoration, guardrails, pavement sawing, trucking, and a wide variety of construction supplies.

This project got a challenging facelift one month in; a large expansion of reconstruction was added to the contract. The West 2.33 miles of this project were originally slated to receive concrete pavement repairs and replacement. But due to the significant deterioration of the existing road, this western 2.33 miles needed to be reconstructed as well as the approximate 5 mile stretch originally let in December of 2022. In spite of the large expansion, the project's DBE suppliers and subcontractors were all up to the challenge.

Heider & Bott and American Construction Supplies were able to provide the increased quantity of geotextile fabrics and steel for concrete pavement, respectively. These two construction supplies were integral to the design of both the subgrade improvements and the high-quality concrete pavement needed for this project. Other DBE subcontractors like CT Enterprises and Arbor Green stepped up to the challenge with the expansion of work with the large change order approved. Hard Rock Sawing & Drilling was able to adjust on the fly to meet the demands of the changing project. Even though the change order was large and demanding, the work is scheduled to get done sooner than everyone thought and all the DBE subcontractors and suppliers were able to manage the load. The STH 29 project turned out to be a winning project for everyone involved.



DBE trucking firm CT Enterprises of Sand Creek, LLC and geotextile fabric supplied by DBE Heider & Bott Company.

Selected Work Items

This is a reminder that #2 on the [DT1202](#) (Documentation of GFE) requires that prime contractors review each proposal and “...ensure that all work items are broken out into economically feasible units to facilitate DBE participation.” If there is a larger component to the project such as a bridge structure, proactively work with the 1st tier hiring subcontractor to identify DBEs who can provide quotes for work items included within a larger work type (ex: bridge painters and/or iron work/bar steel installers).

NAICS codes

Prime contractors are responsible for checking DBE NAICS codes on the [UCP DBE Directory](#) for any work being claimed by a DBE for DBE credit on that project.

Specialty Contractors

Asbestos Abatement

NAICS CODE: 562910

- L F Green Development, LLC
- Mavo Systems Wisconsin, LLC
- S.A.F.E., Inc.
- ENV Property Solution

Fiber Optic

NAICS CODE: 237130

- Rsims Construction
- All-State Concrete Cutting, Inc.
- Chicago Voice & Data Authority Corp.
- DND Electric, Inc.
- Hawk Daylighting

Bridge Painting & Staining

NAICS CODES: 238190/238320

- Sanchez Painting Contractors
- Treider Industries, Inc.
- Central Painting, Inc
- Legend Painting
- Mincon
- Steel City Contractors, LLC

Piling

Excavation

NAICS CODE: 238910

- Wren Works, LLC

Crack & Damage Survey

NAICS CODES: 541330/541370

- Professional Engineering Services

Clearing & Grubbing-Site Prep

NAICS CODES: 238910/561370

- Alfaro & Son's Contractors, LLC
- Conin Contractor Services, Inc.
- Gibraltar Landscape
- Hoffman Landscape, LLC
- Johnson Operating Services, LLC
- Putnam Construction, LLC
- Vanzile Contractors, LLC

Newly Certified DBE Contractors & Expansions

NEW

Highway Supply, LLC

- Material Supplier (Highway Construction Materials)
- Supplier of plastic culverts, steel culverts, water drainage products, erosion control fabrics and geotextiles

Moras Trucking Uno, LLC

- Dump Trucking (Gravel, Sand, Top-Soil, etc.)

G&K Logistics, LLC

- Dump Trucking (Gravel, Sand, Top-Soil, etc.)

Serrmi Products, LLC

- Manufacturing fabricated structural metal
- Manufacturing instruments for measuring and testing electricity and electrical signals
- Wholesaler of transportation equipment and supply (except marine pleasure craft and motor vehicles)

EXPANSIONS

American Construction

Supplies, Inc.

- 423990 - Other Miscellaneous Durable Goods Merchant Wholesalers
- 423510 - Metal Service Centers and Other Metal Merchant Wholesalers

Robert L. Fisher Enterprises - TK Electric, LLC

- 561730 - Landscaping Services
- 425120 - Wholesale Trade Agents and Brokers
- 423610 - Electrical Apparatus and Equipment, Wiring Supplies, and Related Equipment Merchant Wholesalers

Double D Landscape, LLC

- 237310 - Highway, Street, and Bridge Construction, Grading and earthwork, Curb & gutter and sidewalks, driveways and ancillary concrete (removal and installation)
- 237990 - Other Heavy and Civil Engineering Construction, riprap installation
- 238910 - Site Preparation Contractors, Clearing and grubbing

Spotlight DBE Firm

Highway Supply
PO Box 404, Omro, WI 54963
(920) 410-2490
HighwaySupplyWI@gmail.com
www.HighwaySupplyWI.com



Highway Supply is a supplier of culverts, drainage products, geotextiles, and erosion control throughout the state of Wisconsin. The focus on quality and service by President/Owner Linda Mullins has led Highway Supply to become certified by the Wisconsin Department of Transportation as a Disadvantaged Business Enterprise (DBE) since 2023. Linda grew up in the industry around her family's Drain Tile Manufacturing business. Like all small business owners, her family lived and breathed the business. Linda's understanding of the manufacturing process has led to well establish relationships between Highway Supply and leading manufacturers of polyethylene pipe, water control structures, corrugated metal pipe, erosion control & construction fabrics to ensure compliance with DOT standards. Her experience in customer service allows her to connect with customers to ensure quality and service requirements are met.


DBE Certified work area: Supplier

- Material Supplier (Highway Construction Materials)
- Supplier of plastic culverts, steel culverts, water drainage products, erosion control fabrics and geotextiles
- Heavy Highway Construction – Rip Rap
- Shoreline Restoration
- Revetment Construction

NAICS Codes:

423320 - Brick, Stone, and Related Construction Material Merchant Wholesalers
423390 - Other Construction Material Merchant Wholesalers

DBE Opportunities Per Region and Proposal

 Each month, Benjie Hayek, our DBE Program Engineer, identifies DBE sub-contractable opportunities as well as DBEs who have NAICS Codes specific to specialty work items. Please encourage your estimating teams to review the attached region and proposal breakdown (pgs. 10-15) and use it as an additional resource in your solicitation and outreach efforts.

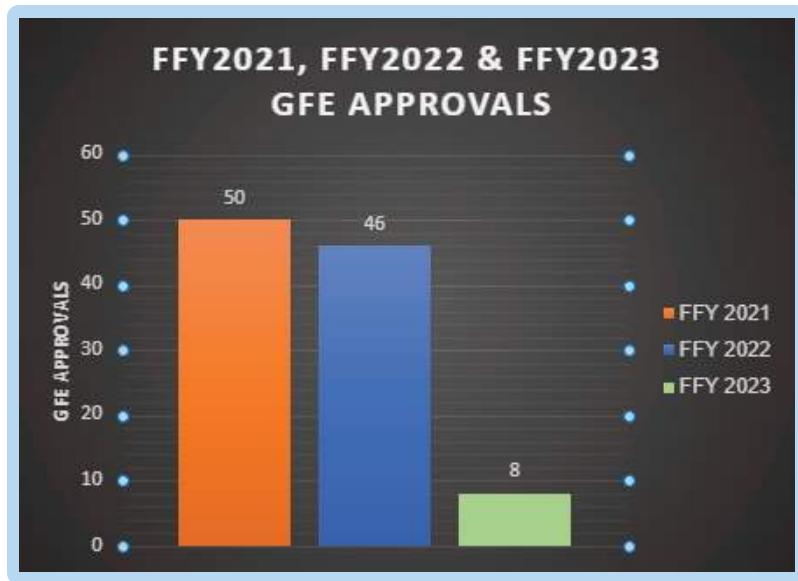
- Review the proposal(s) your company is bidding on and the selected work types identified in your solicitation
- Compare that against the WisDOT DBE Opportunities breakdown per region and proposal
- Are there DBE opportunities your company is missing and/or did not consider?

If you have any questions, reach out to Benjie to discuss:

Benjie Hayek, DBE Program Engineer
benjie.hayek@dot.wi.gov / (608) 712-8915

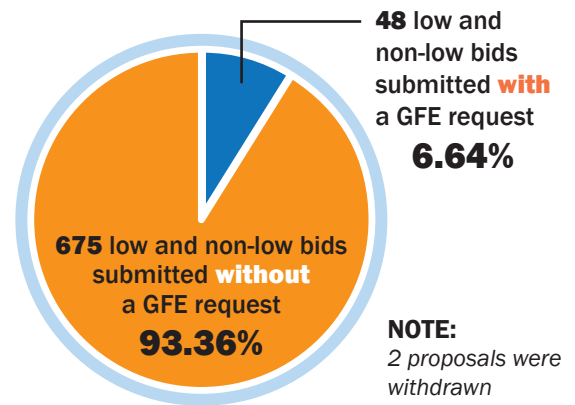
FFY 2023 Good Faith Effort Recap

FFY 2023 was an incredible year as far as Good Faith Effort. We had an **82.61% decrease** in GFE requests which tells the DBE Office that prime contractors worked hard to make DBE utilization at bid time a priority. Equally impressive – out of 723 bids (low and non-low) only **6.64%** included a GFE request. We look forward to keeping this momentum going in FFY2024; a job well done by everyone! **8 is GREAT!**



737 bids were submitted
 - **5** bids were non-responsive
 - **9** proposals were rejected

723 total bids



GFE Approval Percentages

Per Region/Per Awarded Projects YTD through September 2023

**2 REGIONS HAD
0 GFE REQUESTS:**

NC Region – 0.00%
 0 GFE Approvals
 29 Awarded Projects

Assigned DBE Goal Average on awarded projects: **2.66%**

Achieved DBE Goal Average on awarded projects: **4.31%**

NW Region – 0.00%
 0 GFE Approvals
 48 Awarded Projects

Assigned DBE Goal Average on awarded projects: **2.54%**

Achieved DBE Goal Average on awarded projects: **3.53%**

SE Region – 1.96%

1 GFE Approval
 51 Awarded Projects

Assigned DBE Goal Average on awarded projects: **6.00%**

Achieved DBE Goal Average on awarded projects: **8.99%**

SW Region – 4.41%

3 GFE Approvals
 68 Awarded Projects

Assigned DBE Goal Average on awarded projects: **3.21%**

Achieved DBE Goal Average on awarded projects: **5.26%**

NE Region – 12.12%

4 GFE Approvals
 33 Awarded Projects

Assigned DBE Goal Average on awarded projects: **3.03%**

Achieved DBE Goal Average on awarded projects: **3.77%**

NOTE:

As of September 2023, all projects with federal funds have been awarded.

Upcoming Stakeholder Meetings and Events

We invite all prime contractors to participate in the below meetings and events.

Your feedback is an important part of how we shape and improve the DBE Program. These meetings are meant to communicate important upcoming changes as well as provide a forum to prime contractors to ask questions and voice concerns.

DBE Stakeholder Advisory Committee

DBE Stakeholder Advisory Committee operates in the Southeast region and works with WisDOT on approaches to achieving greater DBE participation and strategies to monitor progress, communicating upcoming transportation projects and learning about opportunities to partner with other firms, acting as a liaison to communities and creating and implementing strategies for cultivating a diverse workforce

NEXT MEETING:
October 26, 2023
10:00 am – 12:00 pm CST

TEAMS meeting invite to the DBE Stakeholder Advisory Committee meeting can be found [here](#).

Call in information: 608-571-2209
Phone Conference ID: 823 230 709#

.....

Trans-AC Meeting

This is an industry stakeholder group meeting where current updates and issues are discussed with construction industry and DBE Program staff. All are welcome to attend – we encourage feedback and questions.

NEXT MEETING:
November 21, 2023
1:00 pm – 3:00 pm CST

TEAMS meeting invite to the Trans-AC Meeting can be found [here](#).

Call in information: 608-571-2209
Phone Conference ID: 446 312 332#



**Disadvantaged Business Enterprise
ROUNDTABLE 3.0**

November 9, 2023 • Glacier Canyon Lodge • Wisconsin Dells

← SCAN or CLICK →
to Register
FREE today!

CLICK ME



**38th ANNUAL DBE WORKSHOP
& NETWORKING SUMMIT**

February 28-29, 2024

Kalahari Resorts & Conventions
1305 Kalahari Drive
Wisconsin Dells, WI 53965



self performing work

- ✓ Please remember to evaluate any DBE quote for a work type that your company is considering self-performing with more scrutiny.

Prime contractors can almost always perform the work for less cost. If your company submits a GFE request we look at both the percentage difference and dollar difference as it relates to the total bid amount.

schedule of items

- ✓ BPD has simplified the way bid items are identified. It is now in an Excel spreadsheet and includes all bid items for each proposal for easier sorting and at a glance viewing instead of going through each proposal to view the Schedule of Items within the proposal documents. Please look for this spreadsheet under the bid letting advertisement on the HCCI webpage.

General Bid Letting Reminders

The DBE staff is not available by telephone or by email to answer questions during bid lettings (Tuesday–Wednesday). Please avoid sending individual emails to the DBE staff and direct your questions to:

Madalena Maestri
madalena.maestri@dot.wi.gov
(608) 267-2093

- ✓ **Are you subscribed?** The [Roadway Standards distribution lists](#) are set up for users who want to be notified when updates to these publications are made. BPD publishes three documents that are updated on a regular basis:

Facilities Development Manual (FDM) – This is the design guidance manual for designers preparing plans and specifications. The FDM publication also includes updates to our collection of Standard Detail Drawings (SDDs) used in plans. It is updated quarterly in February, May, August, and November

Standard Specifications – The Standard Specifications are the contractual standards that govern the administration of the contract. The Standard Spec is updated annually in May with an effective date starting with the November letting.

Construction and Materials Manual (CMM) – The CMM is the construction administration procedural guidance manual. The CMM is updated twice a year in the spring and fall.

When updates to these documents are published the distribution lists are used to notify those on the list. On occasion the lists are also used to send out important notifications to the targeted audience. For example the FDM distribution list was recently used to notify the designers of some important Traffic Control design training.

- ✓ **Bid Letting Binder:** There is a lot of information online to assist prime contractors with the bid letting and GFE process. In addition to reviewing this information online, consider keeping an updated bid letting binder. Instead of searching for emails if you have a question, maintain a binder with the following sections:

- [Monthly Bid Letting Newsletters](#)
- [WisDOT Bid Letting Resource Guide](#)
- [Beyond the Basics: Optimizing DBE Construction Utilization for Primes](#)
- [GFE Tool Kit](#)
- [GFE Tool Kit Appendix](#)
- [Outdated DBE Contact Reminder](#)
- [eSubmit Instructions](#)
- Internal processes, procedures, policies & GFE data tracking

This binder can also be used as a training manual for new employees.

Advertisement

- Advertisement Revised
 - Proposal 002:
 - Non-mandatory pre-bid meeting
 - Thursday, June 22, 2023
 - Meeting access information
 - Proposal 010:
 - Advertised June 20, 2023
- **Schedule of Items (bid items).** This advertisement. This will be available
- Counter sheet - Work Rating D

build your company website as a DBE resource

✓ Your company website can be a one-stop shop for all DBE related information. Direct DBEs to your website in your solicitation letter and/or email and consider incorporating the following elements into the DBE section of your website:

- Current bid letting information and **upcoming DBE Opportunities**
- **Recent Projects** that included DBEs. With DBE permission, add pictures
- **DBE Testimonials** and/or **DBE Statistics** that highlight your company's commitment to DBE partnership
- **Encourage DBE Utilization** (DBE trucking, materials and/or supplies) from hiring subcontractors and provide the link to the [UCP DBE Directory](#)
- **Provide Links** back to recorded workshops as mentioned in GFE Reminders in the **solicitations between bid lettings** section (pg.6)

DBE Solicitation and Outreach Reminders

✓ Why should prime contractors update DBE and/or Hiring Subcontractor Solicitations?

The previous example of the DBE solicitation was in use for many years and very text heavy. Many prime contractors used this same version; meaning there was little differentiation between prime contractors and DBEs received identical solicitations. There was not an emphasis on a separate solicitation to hiring subcontractors to utilize DBEs, DBE suppliers and/or DBE trucking or to highlight DBE successes. For any prime contractor who has had a GFE 1:1 session, your company knows that solicitation revisions have been a focus for FFY2022 and FFY2023.

Updated solicitations are a fundamental part of an overall DBE/GFE strategy that re-brands *your company's* DBE message.

✓ What makes a solicitation to DBEs and/or Hiring Subcontractors effective?

- Plain language stated concisely to communicate various pieces of information
- Inclusive language that your company will accommodate **smaller work packages** (when feasible) and that your company welcomes DBE questions about proposals
- Use of bullet points
- Interesting use of graphics and/or pictures that define your company brand
- DBE success data that includes specific projects – such as:
Project 1234-00-01 / April 2022 Letting
DBE Project Goal: 4.00%
DBE Goal Achieved: 17.88%
- Similar messaging that is highlighted on your company website (see tips in column to the left)

WisDOT News

There are many great changes and innovations happening within WisDOT.

So, from time to time, we will share other news not related to bid lettings and DBEs. We hope you find this information valuable to share with your office staff and well as other people you know who might benefit from this important information.

2024 recruiting for WisDOT Interns starts now!

Do you know of someone in college who would be a great fit for WisDOT? We starting to recruit for the 2024 intern class now.

Who are we looking for?

There's a common thread among any WisDOT job: Having a good attitude, a willingness to learn and a passion for creating lasting, impactful work will go a long way. We take great care in making this a win-win experience that assists your education and career path while creating a major benefit for the traveling public.

Our interns gain valuable on the job experience. Take a moment to [view this video](#) that highlights a day on the life of a WisDOT intern. Ready to apply? Interested students can do that as well on the same page.



Official WI map unveiled

The latest edition of the [official Wisconsin state highway map](#) was unveiled.

The map's theme is "Wonders of Wisconsin" and includes several updates since it was last printed in 2019:

- Population figures based on 2020 Census data.
- Amtrak Service inset map was updated with the latest service data.
- Villages incorporated since 2019 were added.
- Wisconsin's six welcome centers were added.

Printed copies of the map can be picked up free of charge at many locations, including rest areas, welcome centers and travel information centers.

Laminated, no-fold wall posters can be ordered as well [here](#). A great addition to your staff conference room!

Get updates and alerts from your favorite social media accounts.

Facebook

[Wisconsin Department of Transportation](#)

[Wisconsin State Patrol](#)

Projects on Facebook

[I-41 News](#)

[Wisconsin Plan 94](#)

[Wisconsin Zoo Interchange North Leg Project](#)

YouTube

[WisDOT Channel](#)

Podcast

[Transportation Connects Us](#)

LinkedIn

[Wisconsin Department of Transportation](#)

Instagram

[Wisconsin DOT](#)

Twitter

[WisconsinDOT](#)

[511WI](#)

[Wisconsin State Patrol](#)

Regions on Twitter

[WisDOT North Central](#)

[WisDOT Northeast](#)

[WisDOT Northwest](#)

[WisDOT Southeast](#)

[WisDOT Southwest](#)

Projects on Twitter

[WIS441I41NEWS](#)

[WisconsinPlan94](#)

**WISDOT DBE PROGRAM HAS A NEW LOOK
ON THE WEB FOR EASIER ACCESS TO
DBE AND HIGHWAY CONTRACTING INFORMATION.
CLICK HERE**

Disadvantaged Business Enterprise (DBE) Program

[Annual Event](#) | [Contacts](#) | [DBE Application](#) | [DBE Directory](#) | [DBE Directory Map](#) | [DBE Program](#)
[DBE Trucking](#) | [Events](#) | [Forms & Info for DBEs](#) | [Newsletters](#) | [Plans and Goals](#) | [Prime Contractor Resources](#)
[Sign up for Updates](#) | [Stakeholders](#) | [Support Services](#)

The purpose of WisDOT's **DBE program** is to increase the talent pool of contractors ready, willing, and able to perform high-quality work throughout the state highway system.

The program grew from the Surface Transportation Assistance Act of 1982. Today, the program supports small and emerging businesses throughout the state by providing technical assistance and **mentorship** on what it takes to compete successfully for heavy highway work.

DBE firms are small businesses at least 51% owned, operated, and fully controlled on a daily basis by any of the following: African Americans, Native Americans, Hispanic Americans, Asian-Pacific Americans, sub-continent Asian Americans, women.



WisDOT is committed to the continuous improvement of the DBE program and strengthening the program for both bidders and DBEs.



Support Services



Newsletters



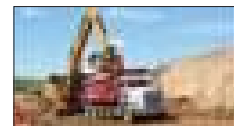
Stakeholders



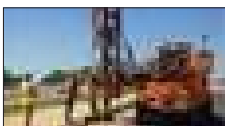
Prime Contractor Resources



DBE Application



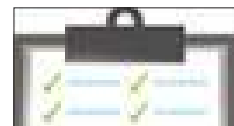
DBE Trucking



Forms and Info for DBEs



Events



Civil Rights and Compliance System

Bid Letting Update / November 14, 2023

LET DATE: 11/14/2023

SW REGION

| PROPOSAL NUMBER | 001 | 002 | 003 | 004 | 005 | 006 | 007 | 008 | 009 | 010 | 011 | 012 | 014 |
|---|-------------------|-------------------|--------------|--------------|--------------|--------------|--------------|--------------|-------------------|--------------|--------------|--------------|--------------|
| DBE GOAL | 6.00% | 6.00% | 4.00% | 5.00% | 3.00% | 3.00% | 3.00% | 4.00% | 4.00% | 3.00% | 2.00% | 4.00% | 2.00% |
| COUNTY | Columbia/ Sauk | Juneau/ Monroe | Dodge | Vernon | Sauk | Vernon | Vernon | Crawford | Richland/ Sauk | Dane | LaCrosse | Columbia | Dane |
| Road Work • Asphalt Paving/Tack • Concrete Paving *Stamped/Colored Concrete • Base Patching • Flumes • Removals | X | X | X | X | X | | | X | X | X/*X | X | X | X |
| *Joint Filler | | | | | *X | | | | | *X | | | |
| Bridge Work • Approaches/Slope Paving/Deck Repair-Overlay/Pile Driving | | | X | | | *X | X | | | | | X | |
| Iron Work • BarSteel/Reinforcing Steel- Rebar • DrilledTie- Dowel Bars | X | X | X/*X | X | X | X | | X | | | X | X | X |
| Structures • BarSteel *Railing *Cofferdams/Temp Shoring *Debris containment system | | | | X | | | X/*X | | | | | *X | |
| Surface Treatment/Sealer | | | X/*X | | | X | X | | | | | X | |
| Bridge Painting *Pigmented Surface Sealer | | | X/*X | | | | *X | | | | | *X | |
| Excavation/Grading *Marsh Excavation *Excavation for Structures/Culverts | | | | | | | | | | | | | |
| Milling/Pulverize and Relay/Rumble Strips | X | X | | | | | | | | | | | |
| Concrete Barrier Permanent | | | | | | | | | | | | | |
| Curb & Gutter/Sidewalk/Detectable Warning Yellow/ Temporary Pedestrian/Removals • Appurtenant concrete work - Driveways * Colored Concrete/Stamping | | X | X | X | X | | | X | X | X | X | X | X |
| Drainage: Culvert/Storm Sewer- Inlets- Manholes/Pipe/ Grates/Removals *Surface drains • Pipe Underdrain | | X | X | X/*X | X | X | X | X | X | X | X | X/*X | X |
| Electrical Work/Lighting/Traffic Signals/Poles Pedestals/ Bases/Loop Detector/Removals *FiberOptic *ITS (Install and/or Supplier) | | | | | | | | | | X | | | X |
| Beam Guard/Cable Barrier/Removals | | X | X | X | | | | X | X | X | | X | |
| Erosion Control/Dust Control/Riprap *Turbidity barrier *Tracking Pads | X | X | X | X | X | X/*X | X | X | X | X | X | X | X |
| Clearing and Grubbing | | | X | X | | | | X | X | X | | X | X |
| Gates/Fence/Removal | X | | | | | | | | | | | | |
| Landscaping | | X | X | X | X | X | X | X | X | X | X | X | X |
| Pavement Cutting/Drilling/Sawing | X | X | X | X | X | | X | X | X | X | X | X | X |
| Rout & Seal | *X | | | | | | | | | *X | | | |
| Pavement Marking/Temporary Marking/Locating No Passing Zones/Removals (Install and/or Supplier) | X | X | | X | X | | X | X | X | X | X | | X |
| Signs/Posts Markers/Removals | | X | X | X | X | | | X | X | X | X | | X |
| *Asbestos Abatement | | | *X | | | | | | | | | *X | |
| QMP/Material Testing | X | X | X | X | X | X | X | X | X | X | X | X | X |
| Construction Staking | X | X | X | X | X | X | X | X | X | X | X | X | X |
| Traffic Control *Temporary Concrete Barrier *Temp Pedestrian * Temp Signals | X | X/*X | X | X/*X | X/*X | X | X | X/*X | X/*X | X | X | X | X/*X |
| Material Supplier | X | X | X | X | X | X | X | X | X | X | X | X | X |
| Trucking: Excavation, Aggregates, Slurry, Asphalt, Millings, Removals * Contaminated soil hauling | X | X | X | X | X | X | X | X | X | X | X | X | X |

X/*X Indicates specialty item on this project in addition to typical bid items

Bid Letting Update / November 14, 2023

LET DATE: 11/14/2023

SE REGION

| PROPOSAL NUMBER | 015 | 016 | 017 | 018 | 019 | 020 | 047 |
|--|--------------|--------------|--------------|--------------|--------------|--------------|---------------|
| DBE GOAL | 1.00% | 7.00% | 7.00% | 8.00% | 8.00% | 8.00% | 12.00% |
| COUNTY | Milwaukee | Ozaukee | Milwaukee | Milwaukee | Walworth | Waukesha | Waukesha |
| Road Work • Asphalt Paving/Tack • Concrete Paving • Base Patching • Flumes • Removals | | X | | X | X | X | X |
| Bridge Work • Approaches/Slope Paving/Deck Repair-Overlay/Pile Driving | | | | | X/*X | | |
| Iron Work • BarSteel/Reinforcing Steel- Rebar • DrilledTie- Dowel Bars | | X | X | X | X | | X |
| Structures • BarSteel *Railing *Cofferdams/Temp Shoring *Debris containment system | | *X | | | X/*X | X/*X | |
| Surface Treatment/Sealer | | | | | X | X | |
| Bridge Painting *Pigmented Surface Sealer | | | | | *X | *X | |
| Curb & Gutter/Sidewalk/Detectable Warning Yellow/Temporary Pedestrian/Removals • Appurtenant concrete work - Driveways * Colored Concrete/Stamping | | | X | X | X | X | X |
| Drainage: Culvert/Storm Sewer- Inlets- Manholes/Pipe/Grates/Removals *Surface drains • Pipe Underdrain | | X | X | X | X | X | X |
| Electrical Work/Lighting/Traffic Signals/Poles Pedestals/Bases/Loop Detector/Removals *FiberOptic *ITS (Install and/or Supplier) | X | X/*X | X | X | X | | X |
| Beam Guard/Cable Barrier/Removals | | X | | | X | X | X |
| Erosion Control/Dust Control/Riprap *Turbidity barrier *Tracking Pads | | X/*X | X | X | X/*X | X | X |
| Clearing and Grubbing | | X | | X | X | X | X |
| Gates/Fence/Removal | | X | | | | | |
| Landscaping | | X | X | X | X | X | X |
| Trees/Shrubs | | | | X | | | |
| Field Office | | X | X | X | | X | X |
| Pavement Cutting/Drilling/Sawing | | X | X | X | X | X | X |
| Pavement Marking/TemporaryMarking/LocatingNoPassingZones/Removals | | X | X | X | X | | X |
| Signs/Posts Markers/Removals | | X | X | X | X | X | X |
| *Asbestos Abatement | | | | | *X | | |
| QMP/Material Testing | | X | X | X | X | X | X |
| Construction Staking | | X | X | X | X | X | X |
| Traffic Control *Temporary Concrete Barrier *Temp Pedestrian | X/*X | X/*X | X/*X | X | X | X | X |
| Material Supplier | | X | X | X | X | X | X |
| Trucking: Excavation, Aggregates, Slurry, Asphalt, Millings, Removals * Contaminated soil hauling | | X | X/*X | X | X/*X | X | X |

X/*X Indicates specialty item on this project in addition to typical bid items

Bid Letting Update / November 14, 2023

LET DATE: 11/14/2023

NE REGION

| PROPOSAL NUMBER | 021 | 022 | 023 | 024 | 025 | 026 |
|---|-------------------------|--------------|---------------------|--------------|--------------|--------------|
| DBE GOAL | 9.00% | 3.00% | 3.00% | 4.00% | 4.00% | 2.00% |
| COUNTY | Outagamie/ Winnebago | Brown | Brown/ Outagamie | Sheboygan | Outagamie | Outagamie |
| Road Work • Asphalt Paving/Tack • Concrete Paving • Base Patching • Flumes • Removals | X | X | X | | X | X |
| Joint Filling | | | | X | | |
| Bridge Work • Approaches/Slope Paving/Deck Repair-Overlay/Pile Driving | | | | X | | |
| Iron Work • BarSteel/Reinforcing Steel- Rebar • DrilledTie- Dowel Bars | X | X | X | X | X | |
| Structures • BarSteel *Railing *Cofferdams/Temp Shoring *Debris containment system | X/*X | X | | | | |
| Surface Treatment/Sealer | X | | | | | |
| Bridge Painting *Pigmented Surface Sealer | X/*X | | | | | |
| Excavation/Grading *Contaminated Soils | | | | | | |
| Milling/Pulverize and Relay/Rumble Strips | | | | | | |
| Curb & Gutter/Sidewalk/Detectable Warning Yellow/Temporary Pedestrian/Removals Appurtenant concrete work - Driveways * Colored Concrete/Stamping | X | X | X | X | X/*X | X |
| Drainage: Culvert/Storm Sewer- Inlets- Manholes/Pipe/Grates/Removals *Surface drains • Pipe Underdrain | X | X | X | X | X | X |
| Electrical Work/Lighting/Traffic Signals/Poles Pedestals/Bases/Loop Detector/Removals *FiberOptic *ITS (Install and/or Supplier) | X | | | X | X | X |
| Beam Guard/Cable Barrier/Removals | X | | | X | X | |
| Erosion Control/Dust Control/Riprap *Turbidity barrier *Tracking Pads | X | X | X | X | X | X |
| Clearing and Grubbing | X | | X | X | X | X |
| Gates/Fence/Removal | X | | | | | X |
| Landscaping | X | X | X | X | X | |
| Trees/Shrubs | | | | | | X |
| Field Office | X | X | X | X | X | X |
| Pavement Cutting/Drilling/Sawing | X | X | X | X | X | X |
| Pavement Marking/TemporaryMarking/LocatingNoPassingZones/Removals | X | X | X | X | X | X |
| Signs/Posts Markers/Removals | | X | X | X | X | X |
| QMP/Material Testing | X | X | X | X | X | X |
| Construction Staking | X | X | X | X | X | X |
| Traffic Control *Temporary Concrete Barrier *Temp Pedestrian | X/*X | X | X/*X | X/*X | X/*X | X/*X |
| Material Supplier | X | X | X | X | X | X |
| Trucking: Excavation, Aggregates, Slurry, Asphalt, Millings, Removals * Contaminated soil hauling | X | X | X | X | X | X |

X/*X Indicates specialty item on this project in addition to typical bid items

Bid Letting Update / November 14, 2023

LET DATE: 11/14/2023

NC REGION

| PROPOSAL NUMBER | 027 | 028 | 029 | 030 | 031 |
|--|----------------|--------------|--------------|--------------|--------------|
| DBE GOAL | 1.00% | 3.00% | 3.00% | 3.00% | 3.00% |
| COUNTY | NC Region Wide | Oneida | Marathon | Marathon | Vilas |
| Road Work • Asphalt Paving/Tack • Concrete Paving • Base Patching • Flumes • Removals | | X | X | X | X |
| Bridge Work • Approaches/Slope Paving/Deck Repair-Overlay/Pile Driving | | | | | |
| Iron Work • BarSteel/Reinforcing Steel- Rebar • DrilledTie- Dowel Bars | | X | | | |
| Structures • BarSteel *Railing *Cofferdams/Temp Shoring • Removals | | | | | |
| Surface Treatment/Sealer | | | | | |
| Bridge Painting/Staining *Pigmented Surface Sealer | | X | | | |
| Excavation/Grading *Contaminated Soils | | | | | |
| Milling/Pulverize and Relay/Rumble Strips | | | | | |
| Concrete Barrier | | | | | |
| Curb & Gutter/Sidewalk/Detectable Warning Yellow/Temporary Pedestrian/Removals Appurtenant concrete work - Driveways * Colored Concrete/Stamping | | X | | X | |
| Drainage: Culvert/Storm Sewer- Inlets- Manholes/Pipe/Grates/Removals *Surface drains • Pipe Underdrain | | X | | | X |
| Electrical Work/Lighting/Traffic Signals/Poles Pedestals/Bases/Loop Detector/Removals *FiberOptic *ITS (Install and/or Supplier) | | | | | |
| Beam Guard/Cable Barrier/Removals | | | | | |
| Erosion Control/Dust Control/Riprap *Turbidity barrier *Tracking Pads | | X/*X | | X | X |
| Clearing and Grubbing | | X | | | |
| Gates/Fence/Removal | | | | | |
| Landscaping | | X | X | | X |
| Trees/Shrubs | | | | | |
| Field Office | | X | X | X | X |
| Pavement Cutting/Drilling/Sawing | | X | X | X | X |
| Pavement Marking/TemporaryMarking/LocatingNoPassingZones/Removals | X | X | X | X | X |
| Signs/Posts Markers/Removals | | X | | | X |
| Sign Bridges | | | | | |
| QMP/Material Testing | | X | X | X | X |
| Construction Staking | | X | X | X | X |
| Traffic Control *Temporary Concrete Barrier *Temp Pedestrian | | X/*X | X | X | X |
| Material Supplier | X | X | X | X | X |
| Trucking: Excavation, Aggregates, Slurry, Asphalt, Millings, Removals * Contaminated soil hauling | | X | X | X | X |

X/*X Indicates specialty item on this project in addition to typical bid items

Bid Letting Update / November 14, 2023

LET DATE: 11/14/2023

| NW REGION | | | | | | | | | | | | | | |
|--|----------------|----------|---------|--------|---------------|--------|--------|----------|-------|-------|--------|--------|----------|----------|
| PROPOSAL NUMBER | 032 | 033 | 035 | 036 | 037 | 038 | 039 | 040 | 041 | 042 | 043 | 044 | 045 | 046 |
| DBE GOAL | 1.00% | 4.00% | 1.00% | 3.00% | 3.00% | 3.00% | 4.00% | 3.00% | 3.00% | 3.00% | 4.00% | 3.00% | 3.00% | 2.00% |
| COUNTY | NW Region Wide | St Croix | Douglas | Taylor | Buffalo/Pepin | Pierce | Pierce | St Croix | Dunn | Dunn | Taylor | Barron | Chippewa | St Croix |
| Road Work • Asphalt Paving/Tack • Concrete Paving • Base Patching • Flumes • Removals | | | | X | X | | | | X | | | | X | X |
| Bridge Work • Approaches/Slope Paving/Deck Repair-Overlay/ Pile Driving *Concrete Masonry Retaining Walls | | | | | | X/*X | | | | | | | | |
| Iron Work • BarSteel/Reinforcing Steel- Rebar • DrilledTie- Dowel Bars | | | | X | | X | X | | X | X | X | | | |
| Structures • BarSteel *Railing *Cofferdams/Temp Shoring *Debris containment system | | | | *X | | X/*X | *X | | | *X | *X | | | |
| Surface Treatment/Sealer | | | | | | | X | | | X | X | | | |
| Bridge Painting/Staining *Pigmented Surface Sealer | | | | | | *X | *X | | | *X | *X | | | |
| Excavation/Grading *Marsh Excavation *Excavation for Structures/ Culverts | | | | X | X | X | X | | X | X | X | X | X | X |
| Curb & Gutter/Sidewalk/Detectable Warning Yellow/Temporary Pedestrian/Removals • Appurtenant concrete work - Driveways * Colored Concrete/Stamping | | | | X | | | X | | X | X | X | X | X | X |
| Drainage: Culvert/Storm Sewer- Inlets- Manholes/ Pipe/Grates/Removals *Surface drains • Pipe Underdrain | | | | X | X | X | X | | X | X | | X | X | X |
| Electrical Work/Lighting/Traffic Signals/Poles Pedestals/Bases/Loop Detector/Removals *FiberOptic *ITS (Install and/or Supplier) | | X | | X | | X | X | | X | | | | | X |
| Beam Guard/Cable Barrier/Removals | | | | | X | X | X | | | X | X | | X | |
| Erosion Control/Dust Control/Riprap *Turbidity barrier *Tracking Pads | | | | X | X | X | X | | X | X | X | X | X | X |
| Clearing and Grubbing | | | | | X | X | X | | | X | | | X | X |
| Gates/Fence/Removal | | | | | | X | | | | | | | | |
| Landscaping | | | | X | X | X | X | | X | X | X | X | X | X |
| Field Office | | | | X | X | X | X | X | X | X | X | | X | X |
| Pavement Cutting/Drilling/Sawing | | | | X | X | X | X | X | X | X | X | X | X | X |
| Pavement Marking/Temporary Marking/Locating No Passing Zones/Removals | X | | X | X | X | X | X | X | X | X | X | X | X | X |
| Signs/Posts Markers/Removals | | | | | X | X | | | X | X | X | X | X | X |
| Sign Bridges | | | | X | | | | | | | | | | |
| *Asbestos Abatement | | | | | | | | | | *X | | | | |
| *Crack & Damage Survey | | | | | | *X | | | | | | | | |
| QMP/Material Testing | | | | X | X | X | X | X | X | X | X | X | X | X |
| Construction Staking | | | | X | X | X | X | X | X | X | X | X | X | X |
| Traffic Control *Temporary Concrete Barrier *Temp Pedestrian | | X | X | X | X | X | X | X | X | X | X | X | X | X |
| Material Supplier | X | X | X | X | X | X | X | X | X | X | X | X | X | X |
| Trucking: Excavation, Aggregates, Slurry, Asphalt, Millings, Removals* Contaminated soil hauling | | | | X | X | X | X | X | X | X | X | X | X | X |
| *Sweeping | | | | X | X | X | X | X | X | X | X | X | X | X |

X/*X Indicates specialty item on this project in addition to typical bid items

LET DATE: 11/14/2023

NW REGION

| PROPOSAL NUMBER | 034 |
|--|---|
| DBE GOAL | 4.00% |
| COUNTY | Eau Claire/ SWEF Safety Weight Enforcement Facility (horizontal considerations) |
| Road Work • Asphalt Paving/Tack • Concrete Paving • Base Patching • Flumes • Removals | X |
| Bridge Work • Approaches/Slope Paving/Deck Repair-Overlay/Pile Driving | |
| Joint Filling | X |
| Iron Work • BarSteel/Reinforcing Steel- Rebar • DrilledTie- Dowel Bars | X |
| Structures • BarSteel *Railing *Cofferdams/Temp Shoring *Debris containment system | |
| Bridge Painting *Pigmented Surface Sealer | |
| Excavation/Grading *Marsh Excavation *Excavation for Structures/Culverts | X |
| Concrete Barrier Permanent | |
| Curb & Gutter/Sidewalk/Detectable Warning Yellow/Temporary Pedestrian/Removals Appurtenant concrete work - Driveways | X |
| Drainage: Culvert/Storm Sewer- Inlets- Manholes/Pipe/Grates/Removals *Surface drains • Pipe Underdrain | X |
| Electrical Work/Lighting/Traffic Signals/Poles Pedestals/Bases/Loop Detector/Removals *FiberOptic *ITS (Install and/or Supplier) | X/*X |
| Beam Guard/Cable Barrier/Removals | X |
| Erosion Control/Dust Control/Riprap *Turbidity barrier | X/*X |
| Clearing and Grubbing | X |
| Gates/Fence/Removal | X |
| Landscaping | X |
| Trees/Shrubs | X |
| Field Office | X |
| Pavement Cutting/Drilling/Sawing | X |
| *Rout & Seal | X |
| Pavement Marking/Temporary Marking/Locating No Passing Zones/Removals | X |
| Signs/Posts Markers/Removals | X |
| Sign Bridges | X |
| *Asbestos Removal | X |
| QMP/Material Testing | X |
| Construction Staking | X |
| Traffic Control *Temporary Concrete Barrier *Temp Pedestrian | X/*X |
| Material Supplier | X |
| Trucking: Excavation, Aggregates, Slurry, Asphalt, Millings, Removals | X |

X/*X Indicates specialty item on this project in addition to typical bid items