

Adding a Bitmap to the TraCS Diagram Tool

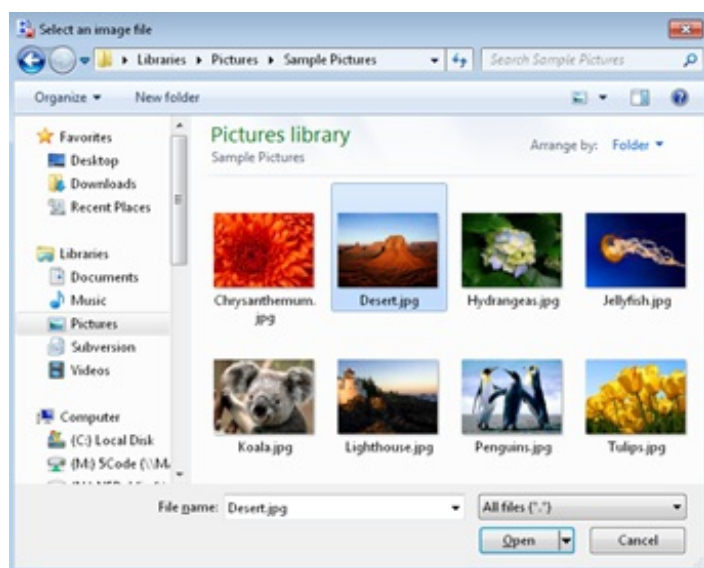
Last Modified on 06/20/2017 11:29 am CDT


If you have diagrams in the form of a bitmap, you can insert them into the diagram.

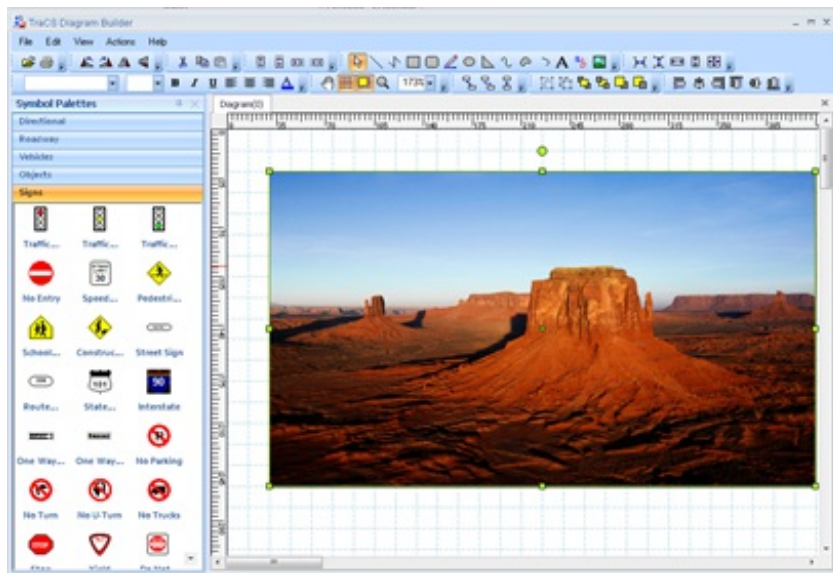
1. While in the diagram tool Click  in the drawing toolbox.



2. Draw a square in the grid.
3. Find where the bitmap is stored.



4. Click 
 - a. Bitmap goes into the diagram the size of your square.



More FAQs Here:

<http://wisconsin.gov/Pages/safety/enforcement/agencies/tracs/faqs.aspx>

dar—6/14/2017
