

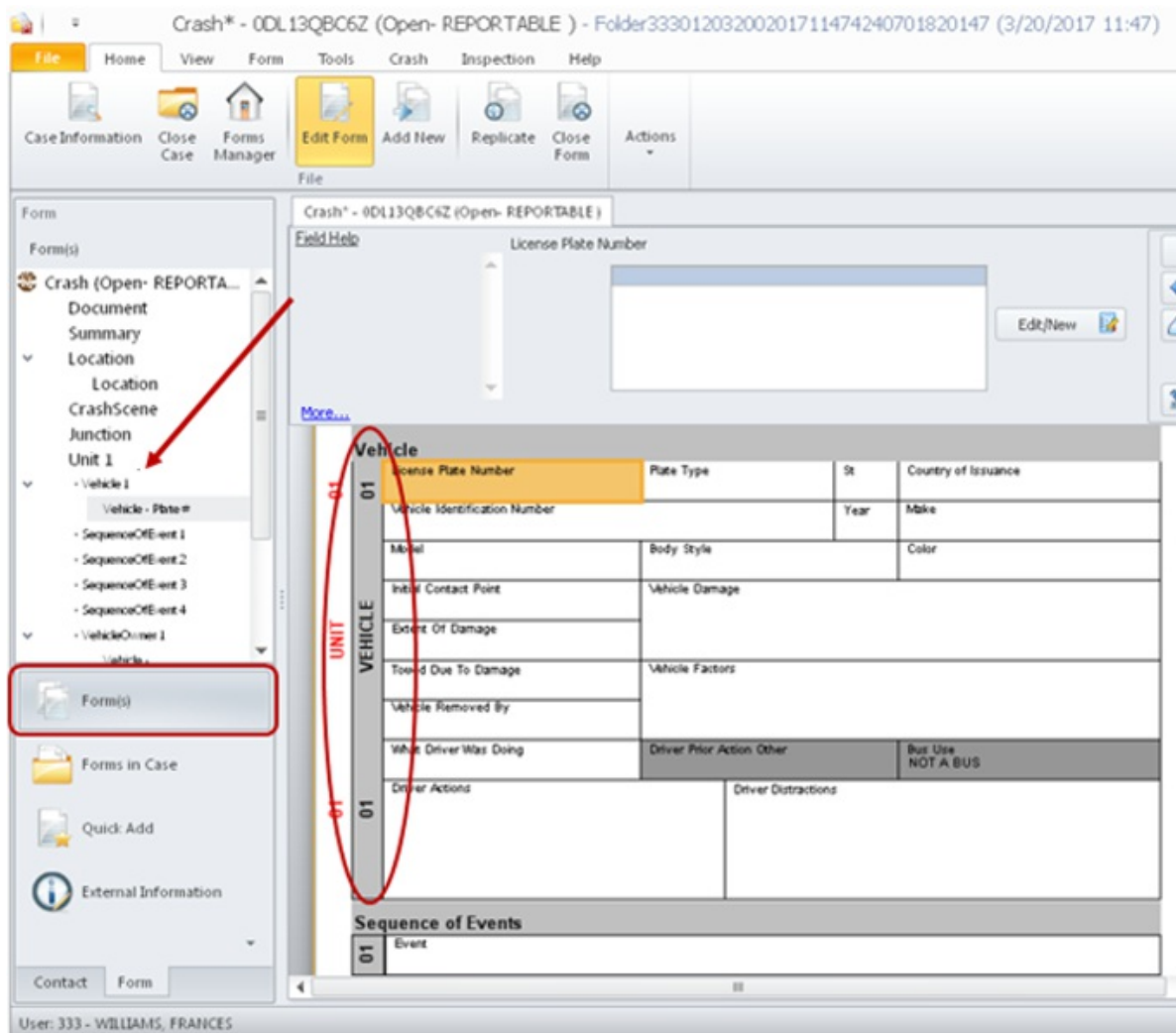
Crash Form looks Validated but will not Validate / Transmit

Last Modified on 11/21/2018 1:55 pm CST

Basically, when Validating or Transmitting the crash form and for some reason the form looks correct but just will not validate/transmit; the next step should be to look at the group 'Sequence Numbers' numbers.

1. Open the navigation bar on the left and choose the Form(s) view. What the sequence number is supposed to be is on this bar. The Navigation bar also makes it easier to jump through the form looking at the numbers.
2. You will be looking at sequence number for all groups but concentrate on groups that can have more than one group on the crash form. Also try to narrow down the group to the validation error. (i.e. Driver Actions required would more likely be the Vehicle group.) These are the groups that seem to have the most issues.
 - a. Unit
 - b. Vehicle
 - c. Vehicle Owner
 - d. Individual
 - e. Violation
 - f. Property Owner
 - g. Object Struck
3. First look for missing numbers. Note: Missing numbers should have been fixed in WIPack170204.
4. Next, match up the numbers on the bar with the numbers on the form. There should never be duplicate numbers for any group.
5. In one case: the navigation bar had vehicle 1 and 2 but in the form had 02 and 02. That is a problem.

6. Most of the time deleting the incorrect group and re-adding it will fix the sequencing issue.
7. As a last resort redo the report. In the example above I couldn't figure out which group had the issue so deleting both vehicles would be the first option and if that didn't work redo the report.
8. Below is where to look, this issue is more difficult working with a printed copy but most issues can be seen in the printed copy also. The example below is correct.



More TraCS FAQs Here:

<http://wisconsindot.gov/Pages/safety/enforcement/agencies/tracs/faqs.aspx>

